

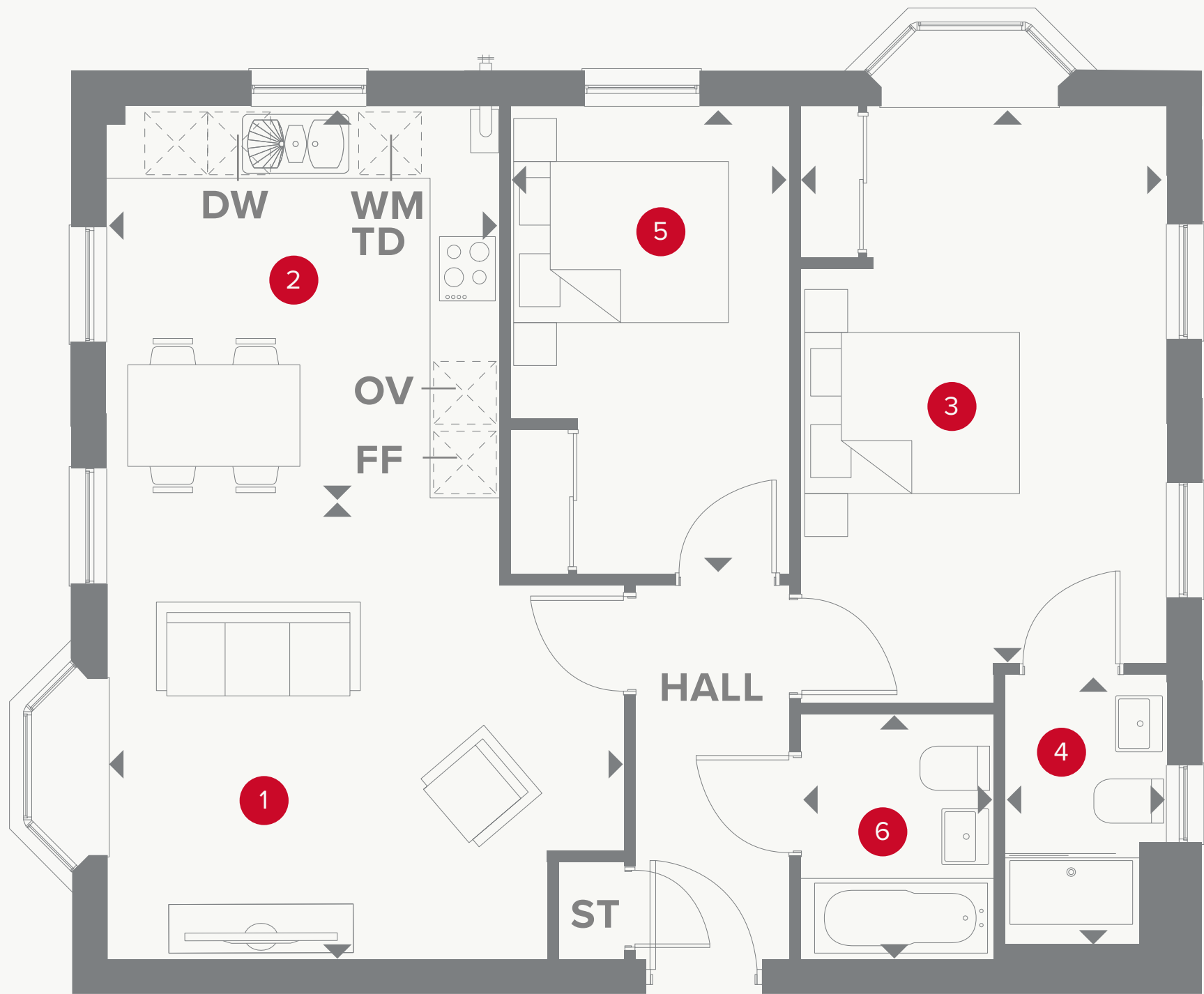


TAILORED
- REDROW -

QUORN
ONE AND TWO BEDROOM APARTMENTS

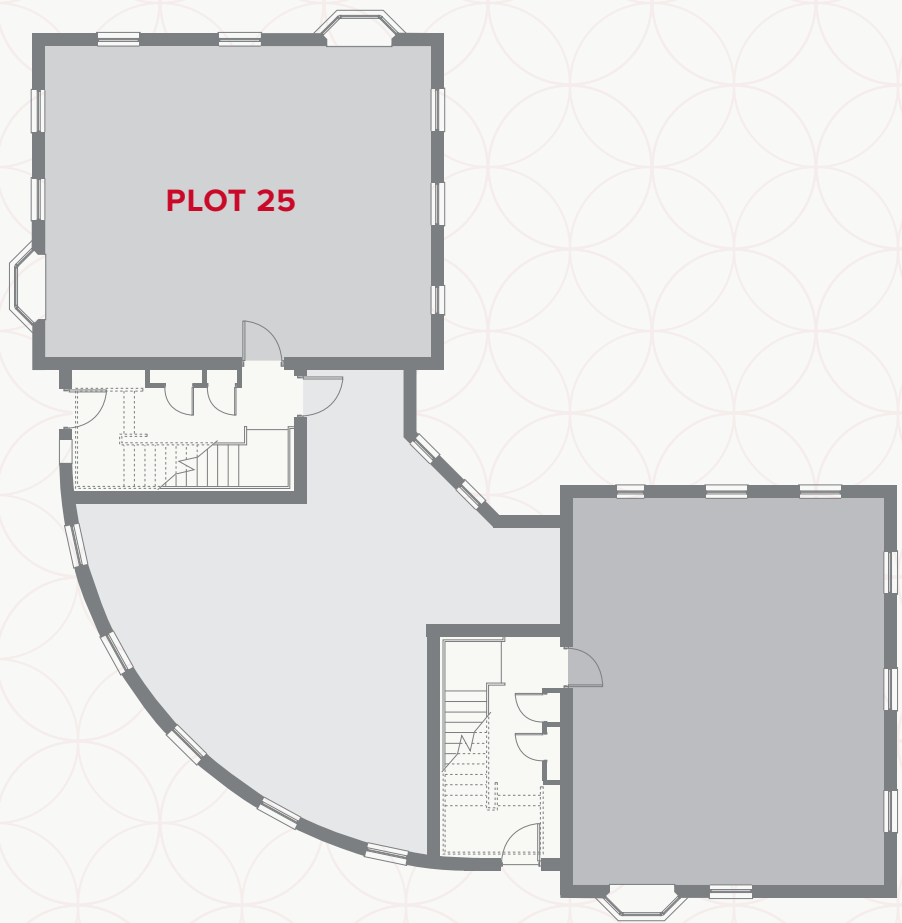


PLOT 25



QUORN GROUND FLOOR

1	Lounge	14'8" x 9'7"	4.50 x 2.96 m
2	Kitchen/ Dining	14'7" x 11'2"	4.48 x 3.41 m
3	Bedroom 1	18'1" x 10'5"	5.50 x 3.18 m
4	En-suite	9'0" x 4'6"	2.75 x 1.39 m
5	Bedroom 2	14'4" x 8'1"	4.39 x 2.45 m
6	Bathroom	6'1" x 5'6"	1.84 x 1.70 m



KEY

-  Hob

 OV Oven

 FF Fridge/freezer

 TD Tumble dryer space
-  Dimensions start

 ST Storage cupboard

 WM Washing machine space

 DW Dish washer space

Customers should note this illustration is an example of the Quorn apartment. All dimensions indicated are approximate and the furniture layout is for illustrative purposes only. Homes may be 'handed' (mirror image) versions of the illustrations, and may be detached, semi-detached or terraced. Materials used may differ from plot to plot including render and roof tile colours. Detailed plans and specifications are available for inspection for each plot at our Sales Centre during working hours and customers must check their individual specifications prior to making a reservation. All wardrobes are subject to site specification. Please see Sales Consultant for further details.

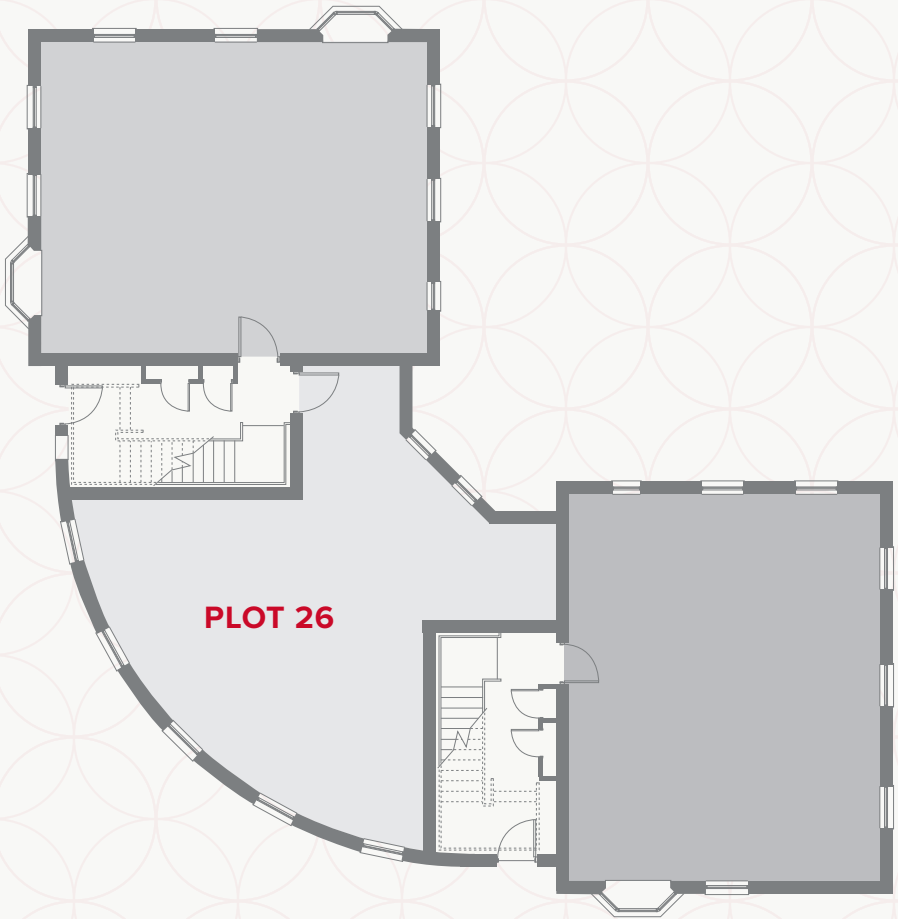
PLOT 26



Customers should note this illustration is an example of the Quorn apartment. All dimensions indicated are approximate and the furniture layout is for illustrative purposes only. Homes may be 'handed' (mirror image) versions of the illustrations, and may be detached, semi-detached or terraced. Materials used may differ from plot to plot including render and roof tile colours. Detailed plans and specifications are available for inspection for each plot at our Sales Centre during working hours and customers must check their individual specifications prior to making a reservation. All wardrobes are subject to site specification. Please see Sales Consultant for further details.

QUORN
GROUND FLOOR

1	Lounge/Dining	21'1" x 17'6"	6.44 x 5.37 m
2	Kitchen	7'5" x 5'2" 11'4" x 4'9"	2.30 x 1.59 m 3.47 x 1.50 m
3	Bedroom 1	17'9" x 15'1"	5.44 x 4.61 m
4	Bedroom 2	16'7" x 8'2"	5.14 x 2.50 m
5	Bathroom	6'1" x 4'9" 7'1" x 3'10"	1.84 x 1.47 m 2.17 x 1.21 m

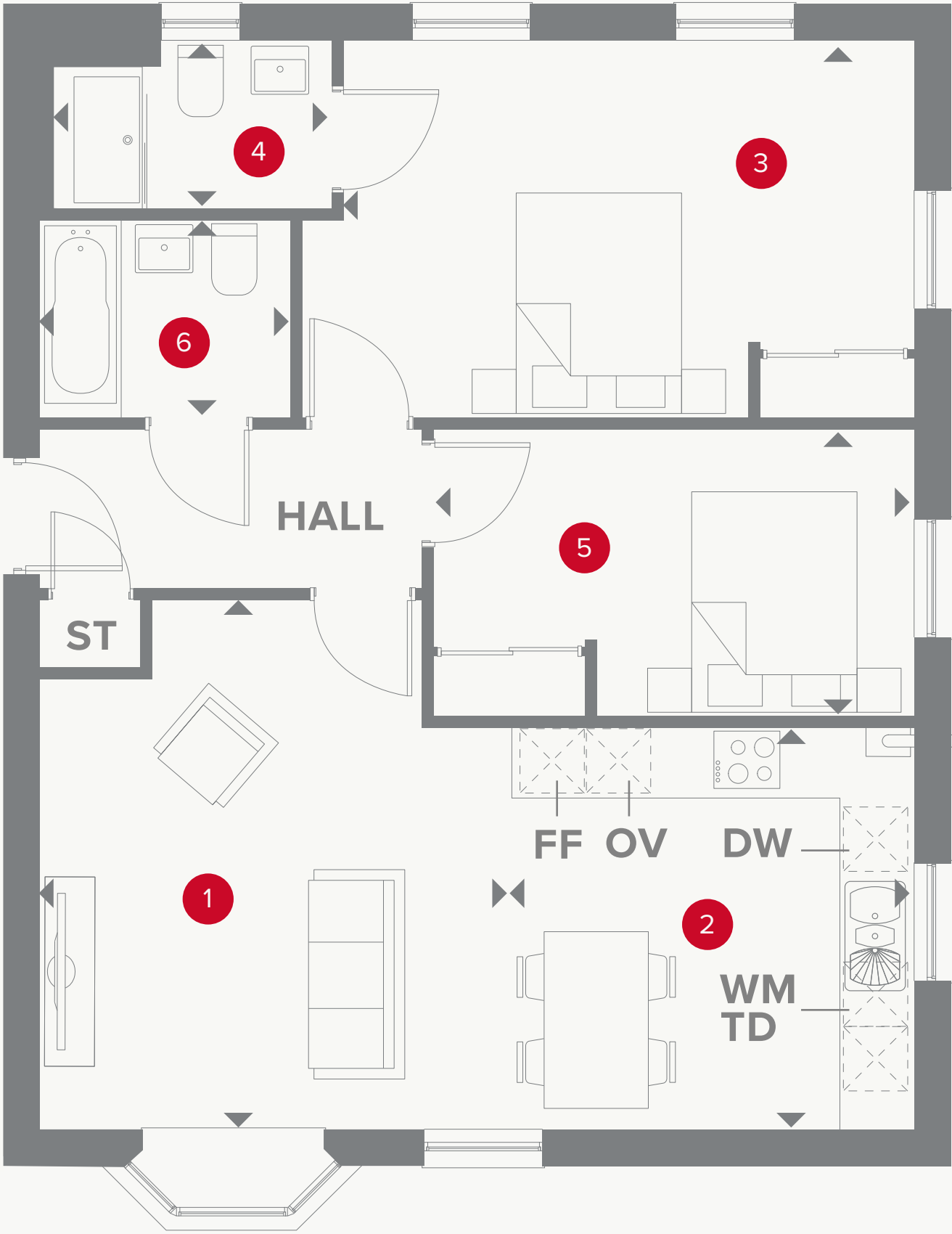


KEY

	Hob		Dimensions start
OV	Oven	ST	Storage cupboard
FF	Fridge/freezer	WM	Washing machine space
TD	Tumble dryer space	DW	Dish washer space

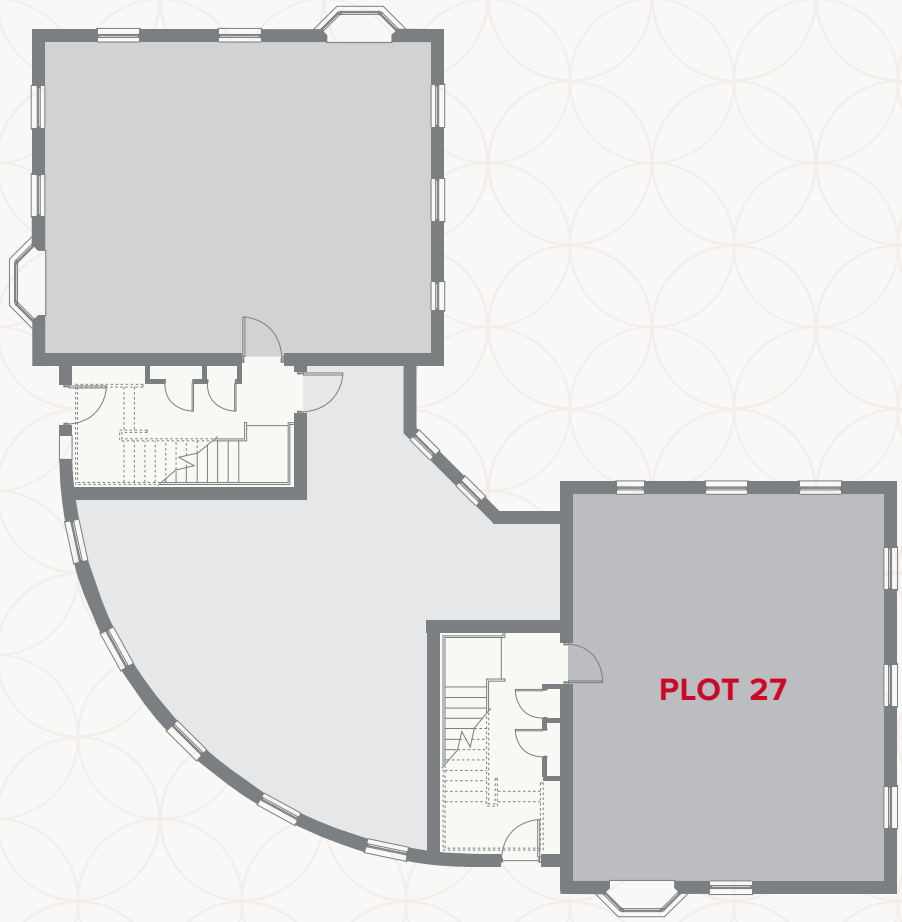
CONSUMER
CODE FOR
HOME BUILDERS
www.consumercode.co.uk

PLOT 27



QUORN GROUND FLOOR

1	Lounge	14'8" x 10'8"	4.50 x 3.30 m
2	Kitchen/ Dining	13'8" x 11'2"	4.20 x 3.40 m
3	Bedroom 1	18'1" x 10'5"	5.50 x 3.18 m
4	En-suite	9'0" x 4'6"	2.75 x 1.40 m
5	Bedroom 2	14'4" x 8'1"	4.39 x 2.45 m
6	Bathroom	6'6" x 5'6"	1.84 x 1.70 m



KEY

-  Hob

 OV Oven

 FF Fridge/freezer

 TD Tumble dryer space
-  Dimensions start

 ST Storage cupboard

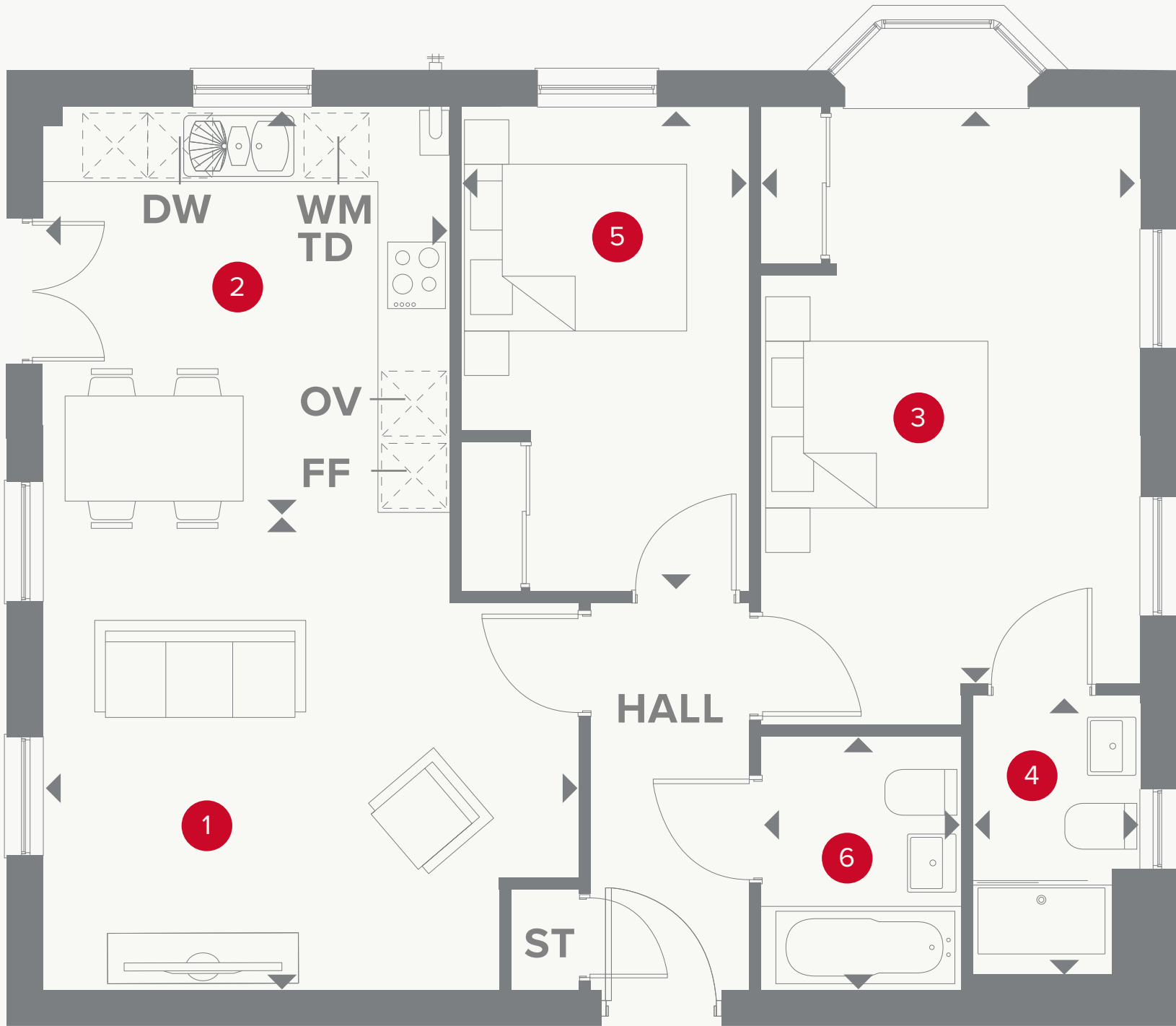
 WM Washing machine space

 DW Dish washer space

Customers should note this illustration is an example of the Quorn apartment. All dimensions indicated are approximate and the furniture layout is for illustrative purposes only. Homes may be 'handed' (mirror image) versions of the illustrations, and may be detached, semi-detached or terraced. Materials used may differ from plot to plot including render and roof tile colours. Detailed plans and specifications are available for inspection for each plot at our Sales Centre during working hours and customers must check their individual specifications prior to making a reservation. All wardrobes are subject to site specification. Please see Sales Consultant for further details.

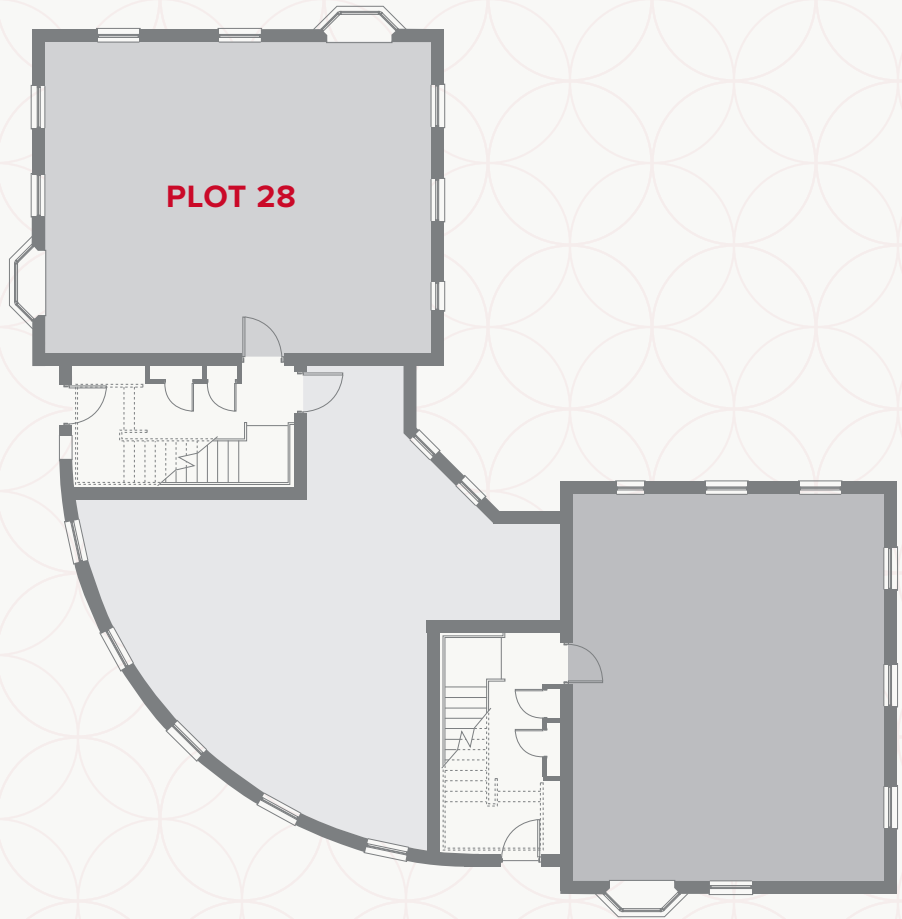
**CONSUMER
CODE FOR
HOME BUILDERS**
www.consumercode.co.uk

PLOT 28



QUORN FIRST FLOOR

1	Lounge	14'8" x 9'7"	4.50 x 2.96 m
2	Kitchen/ Dining	14'7" x 11'2"	4.48 x 3.41 m
3	Bedroom 1	18'1" x 10'5"	5.50 x 3.18 m
4	En-suite	9'0" x 4'6"	2.75 x 1.39 m
5	Bedroom 2	14'4" x 8'1"	4.39 x 2.45 m
6	Bathroom	6'1" x 5'6"	1.84 x 1.70 m



KEY

	Hob		Dimensions start
OV	Oven	ST	Storage cupboard
FF	Fridge/freezer	WM	Washing machine space
TD	Tumble dryer space	DW	Dish washer space

Customers should note this illustration is an example of the Quorn apartment. All dimensions indicated are approximate and the furniture layout is for illustrative purposes only. Homes may be 'handed' (mirror image) versions of the illustrations, and may be detached, semi-detached or terraced. Materials used may differ from plot to plot including render and roof tile colours. Detailed plans and specifications are available for inspection for each plot at our Sales Centre during working hours and customers must check their individual specifications prior to making a reservation. All wardrobes are subject to site specification. Please see Sales Consultant for further details.

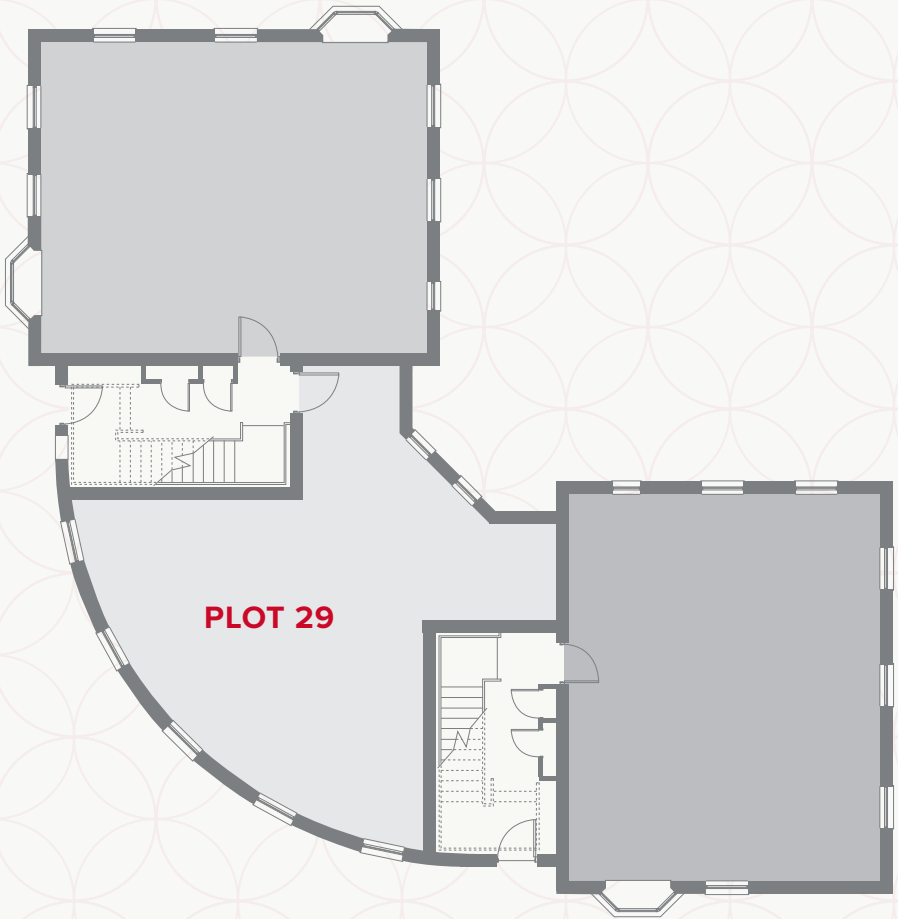
**CONSUMER
CODE FOR
HOME BUILDERS**
www.consumercode.co.uk

PLOT 29



QUORN
FIRST FLOOR

1	Lounge/Dining	21'1" x 17'6"	6.44 x 5.37 m
2	Kitchen	7'5" x 5'2" 11'4" x 4'9"	2.30 x 1.59 m 3.47 x 1.50 m
3	Bedroom 1	17'9" x 15'1"	5.44 x 4.61 m
4	Bedroom 2	16'7" x 8'2"	5.14 x 2.50 m
5	Bathroom	6'1" x 4'9" 7'1" x 3'10"	1.84 x 1.47 m 2.17 x 1.21 m



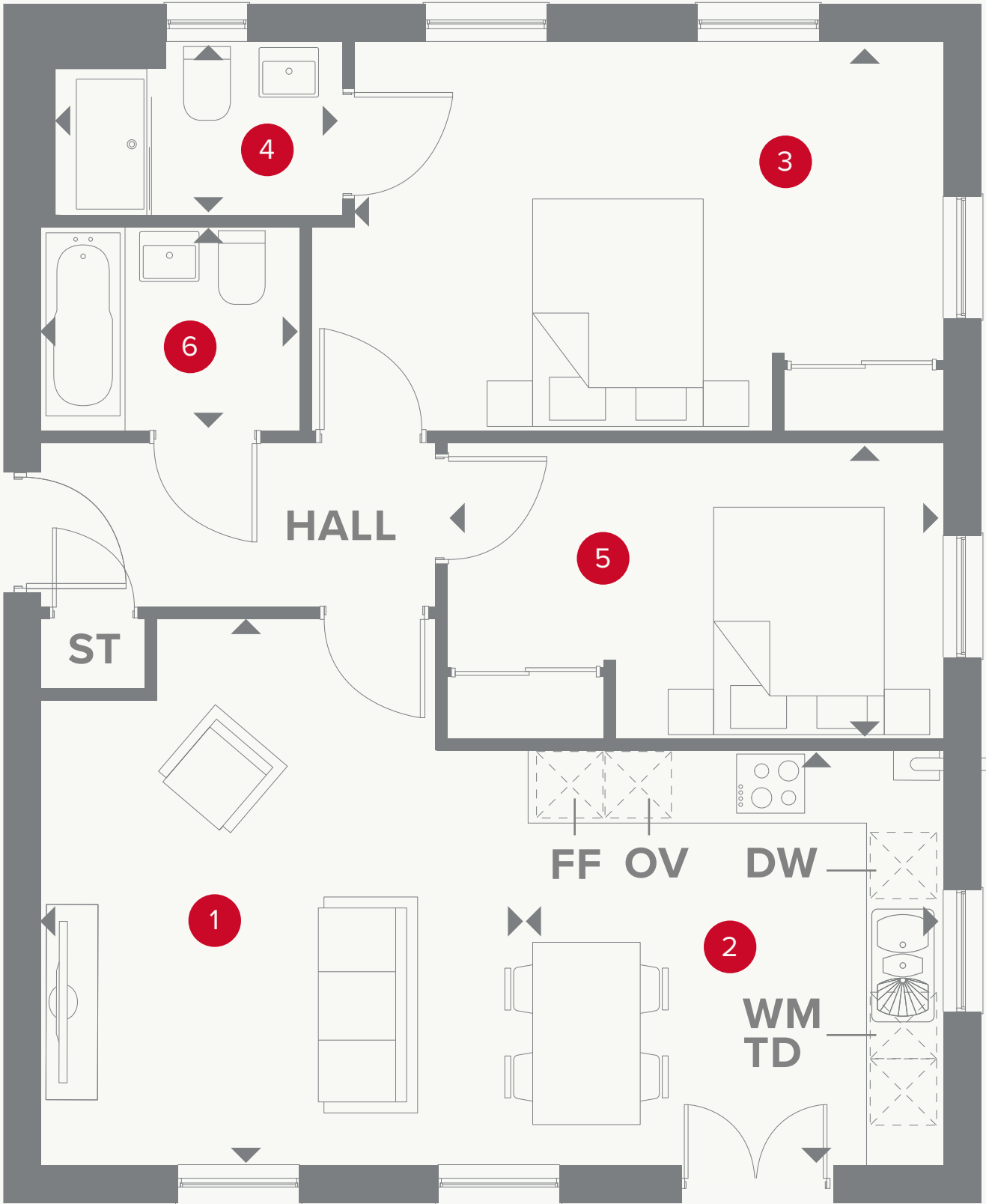
KEY

	Hob		Dimensions start
OV	Oven	ST	Storage cupboard
FF	Fridge/freezer	WM	Washing machine space
TD	Tumble dryer space	DW	Dish washer space

Customers should note this illustration is an example of the Quorn apartment. All dimensions indicated are approximate and the furniture layout is for illustrative purposes only. Homes may be 'handed' (mirror image) versions of the illustrations, and may be detached, semi-detached or terraced. Materials used may differ from plot to plot including render and roof tile colours. Detailed plans and specifications are available for inspection for each plot at our Sales Centre during working hours and customers must check their individual specifications prior to making a reservation. All wardrobes are subject to site specification. Please see Sales Consultant for further details.

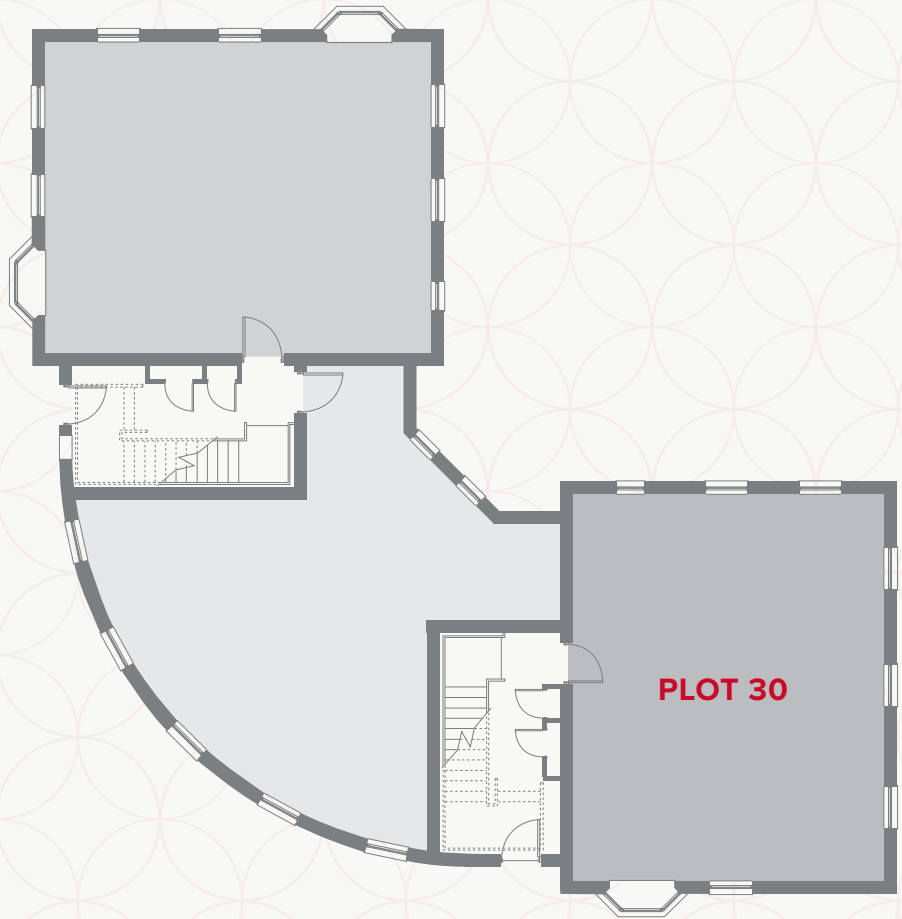
**CONSUMER
CODE FOR
HOME BUILDERS**
www.consumercode.co.uk

PLOT 30



QUORN
FIRST FLOOR

1	Lounge	14'8" x 10'8"	4.50 x 3.30 m
2	Kitchen/ Dining	13'8" x 11'2"	4.20 x 3.40 m
3	Bedroom 1	18'1" x 10'5"	5.50 x 3.18 m
4	En-suite	9'0" x 4'6"	2.75 x 1.40 m
5	Bedroom 2	14'4" x 8'1"	4.39 x 2.45 m
6	Bathroom	6'6" x 5'6"	1.84 x 1.70 m



KEY

-  Hob

 OV Oven

 FF Fridge/freezer

 TD Tumble dryer space
-  Dimensions start

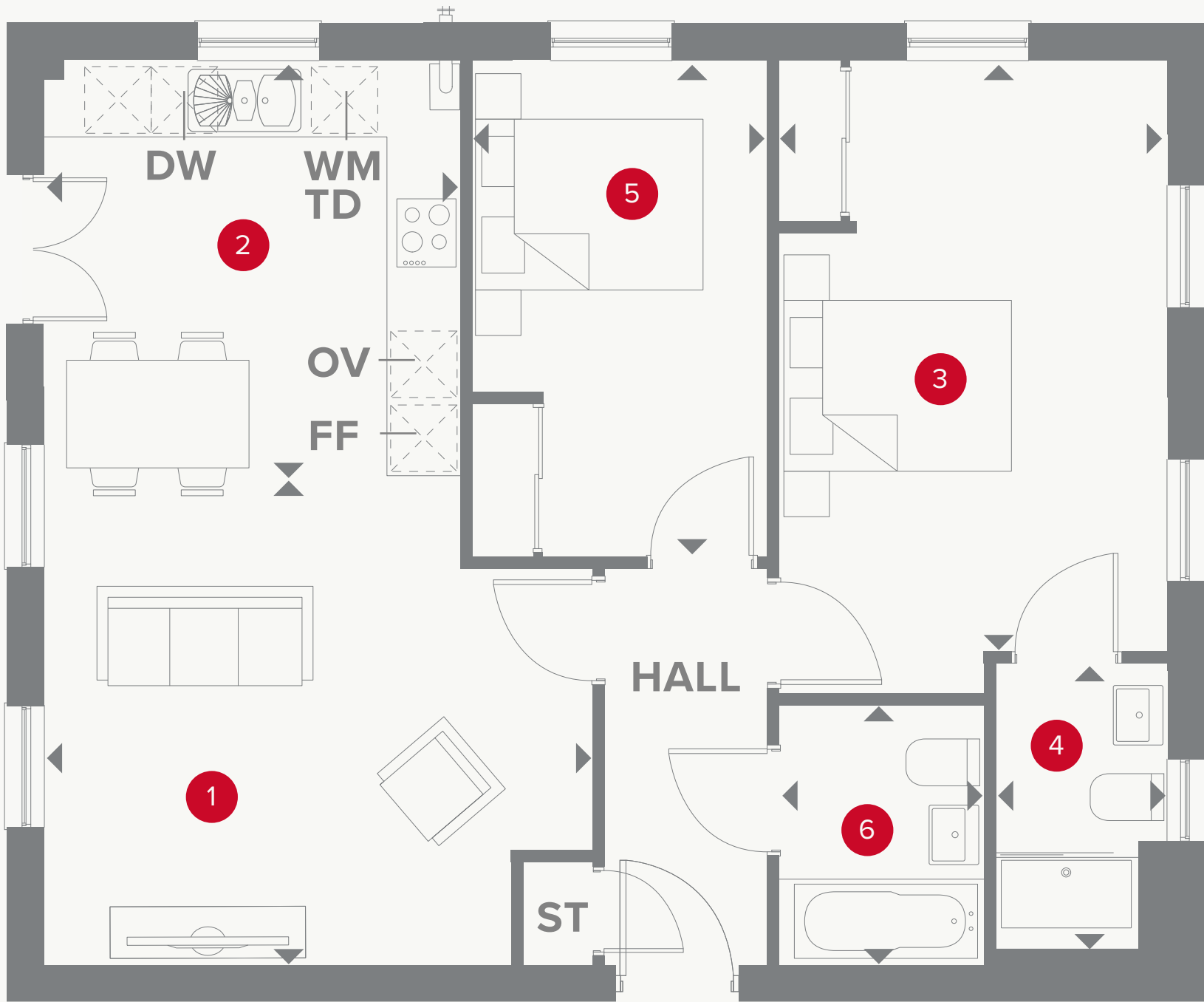
 ST Storage cupboard

 WM Washing machine space

 DW Dish washer space

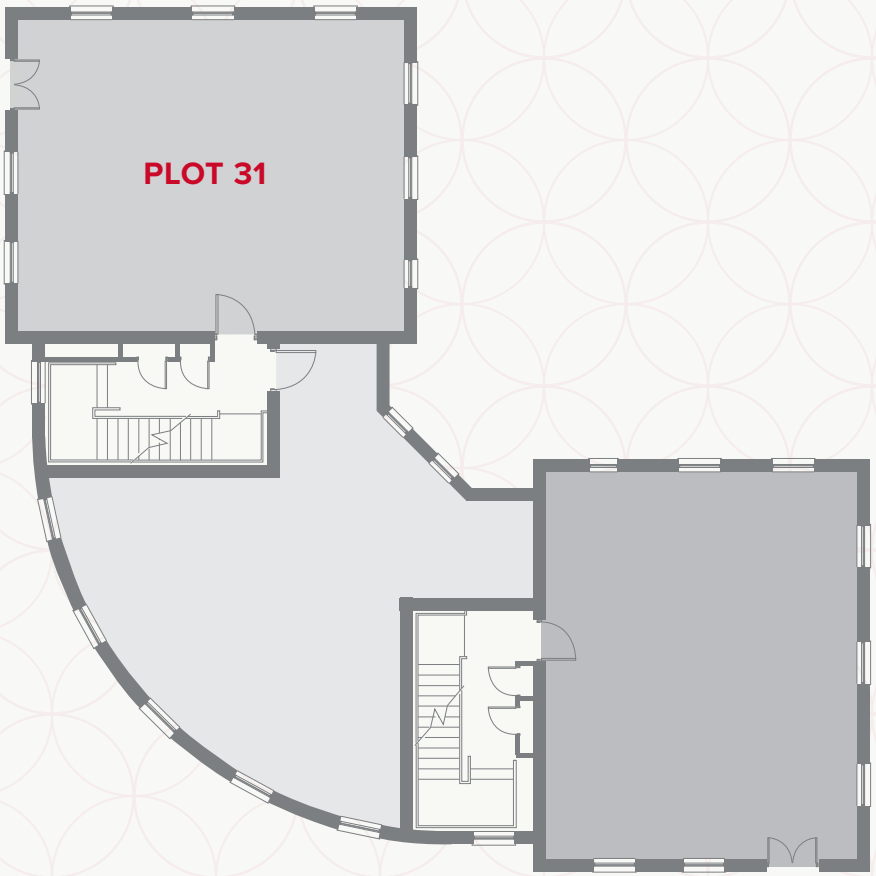
Customers should note this illustration is an example of the Quorn apartment. All dimensions indicated are approximate and the furniture layout is for illustrative purposes only. Homes may be 'handed' (mirror image) versions of the illustrations, and may be detached, semi-detached or terraced. Materials used may differ from plot to plot including render and roof tile colours. Detailed plans and specifications are available for inspection for each plot at our Sales Centre during working hours and customers must check their individual specifications prior to making a reservation. All wardrobes are subject to site specification. Please see Sales Consultant for further details.

PLOT 31



QUORN SECOND FLOOR

1	Lounge	14'8" x 9'7"	4.50 x 2.96 m
2	Kitchen/ Dining	14'7" x 11'2"	4.48 x 3.41 m
3	Bedroom 1	18'1" x 10'5"	5.50 x 3.18 m
4	En-suite	9'0" x 4'6"	2.75 x 1.39 m
5	Bedroom 2	14'4" x 8'1"	4.39 x 2.45 m
6	Bathroom	6'1" x 5'6"	1.84 x 1.70 m



KEY

-  Hob

 **OV** Oven

 **FF** Fridge/freezer

 **TD** Tumble dryer space
-  Dimensions start

 **ST** Storage cupboard

 **WM** Washing machine space

 **DW** Dish washer space

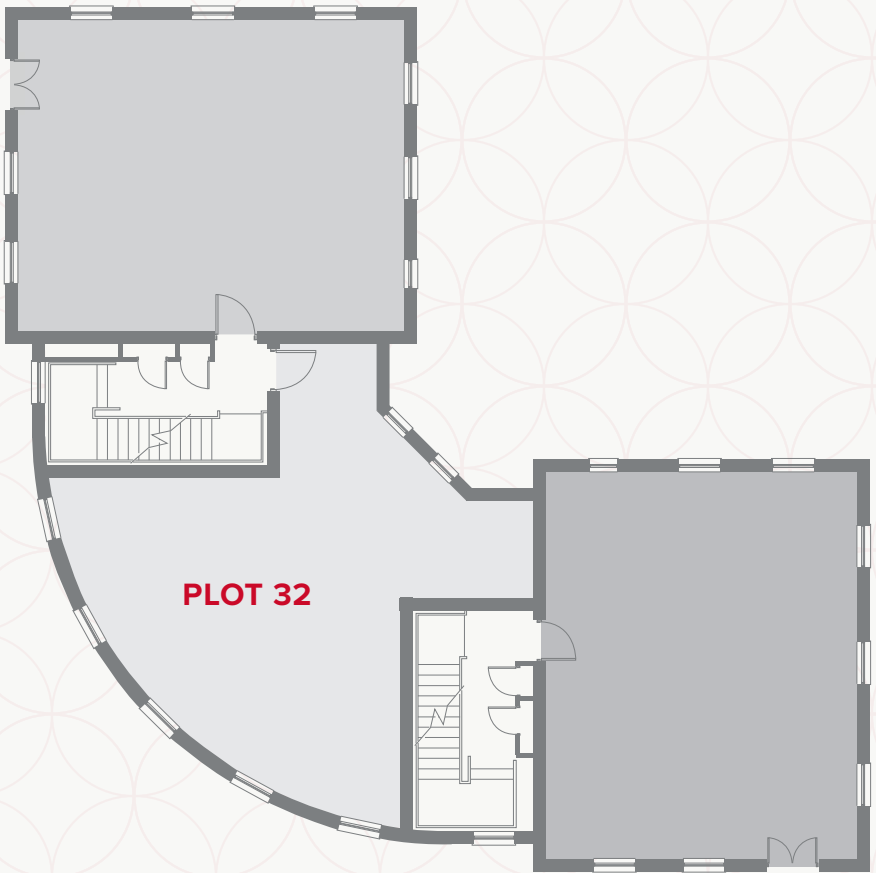
Customers should note this illustration is an example of the Quorn apartment. All dimensions indicated are approximate and the furniture layout is for illustrative purposes only. Homes may be 'handed' (mirror image) versions of the illustrations, and may be detached, semi-detached or terraced. Materials used may differ from plot to plot including render and roof tile colours. Detailed plans and specifications are available for inspection for each plot at our Sales Centre during working hours and customers must check their individual specifications prior to making a reservation. All wardrobes are subject to site specification. Please see Sales Consultant for further details.

PLOT 32



QUORN
SECOND FLOOR

1	Lounge/Dining	21'1" x 17'6"	6.44 x 5.37 m
2	Kitchen	7'5" x 5'2" 11'4" x 4'9"	2.30 x 1.59 m 3.47 x 1.50 m
3	Bedroom 1	17'9" x 15'1"	5.44 x 4.61 m
4	Bedroom 2	16'7" x 8'2"	5.14 x 2.50 m
5	Bathroom	6'1" x 4'9" 7'1" x 3'10"	1.84 x 1.47 m 2.17 x 1.21 m



KEY

-  Hob

 Oven

 Fridge/freezer

 Tumble dryer space
-  Dimensions start

 Storage cupboard

 Washing machine space

 Dish washer space

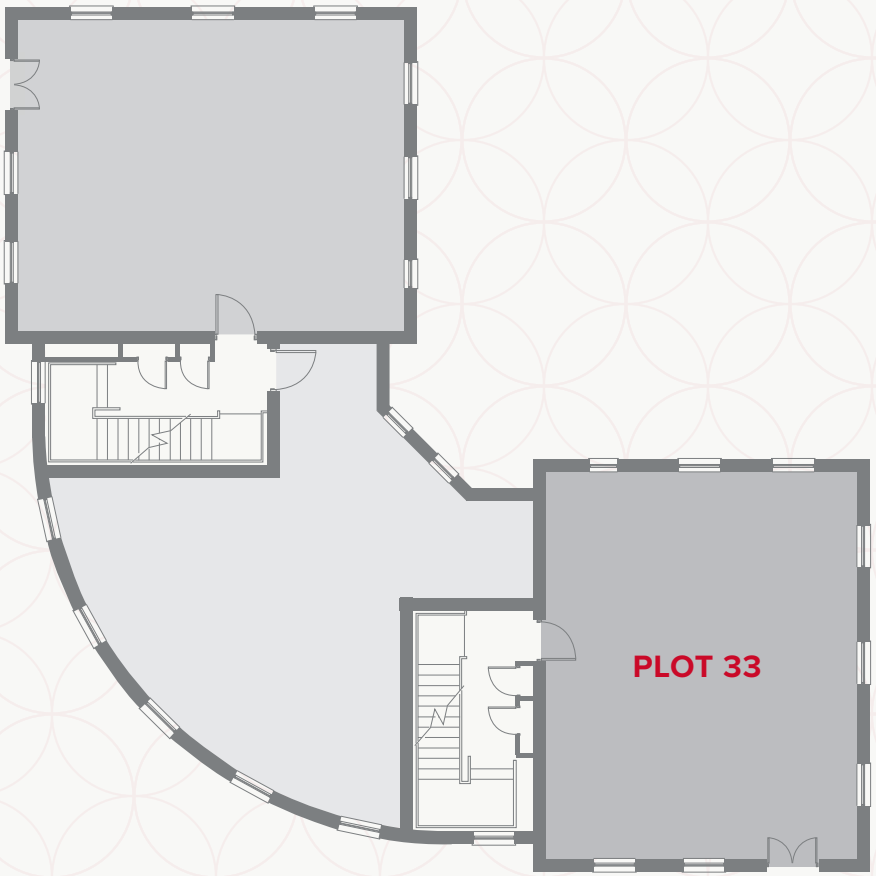
Customers should note this illustration is an example of the Quorn apartment. All dimensions indicated are approximate and the furniture layout is for illustrative purposes only. Homes may be 'handed' (mirror image) versions of the illustrations, and may be detached, semi-detached or terraced. Materials used may differ from plot to plot including render and roof tile colours. Detailed plans and specifications are available for inspection for each plot at our Sales Centre during working hours and customers must check their individual specifications prior to making a reservation. All wardrobes are subject to site specification. Please see Sales Consultant for further details.

PLOT 33



QUORN
SECOND FLOOR

1	Lounge	14'8" x 10'8"	4.50 x 3.30 m
2	Kitchen/ Dining	13'8" x 11'2"	4.20 x 3.40 m
3	Bedroom 1	18'1" x 10'5"	5.50 x 3.18 m
4	En-suite	9'0" x 4'6"	2.75 x 1.40 m
5	Bedroom 2	14'4" x 8'1"	4.39 x 2.45 m
6	Bathroom	6'6" x 5'6"	1.84 x 1.70 m



KEY

	Hob		Dimensions start
OV	Oven	ST	Storage cupboard
FF	Fridge/freezer	WM	Washing machine space
TD	Tumble dryer space	DW	Dish washer space

Customers should note this illustration is an example of the Quorn apartment. All dimensions indicated are approximate and the furniture layout is for illustrative purposes only. Homes may be 'handed' (mirror image) versions of the illustrations, and may be detached, semi-detached or terraced. Materials used may differ from plot to plot including render and roof tile colours. Detailed plans and specifications are available for inspection for each plot at our Sales Centre during working hours and customers must check their individual specifications prior to making a reservation. All wardrobes are subject to site specification. Please see Sales Consultant for further details.

CONSUMER
CODE FOR
HOME BUILDERS
www.consumercode.co.uk