



HERITAGE

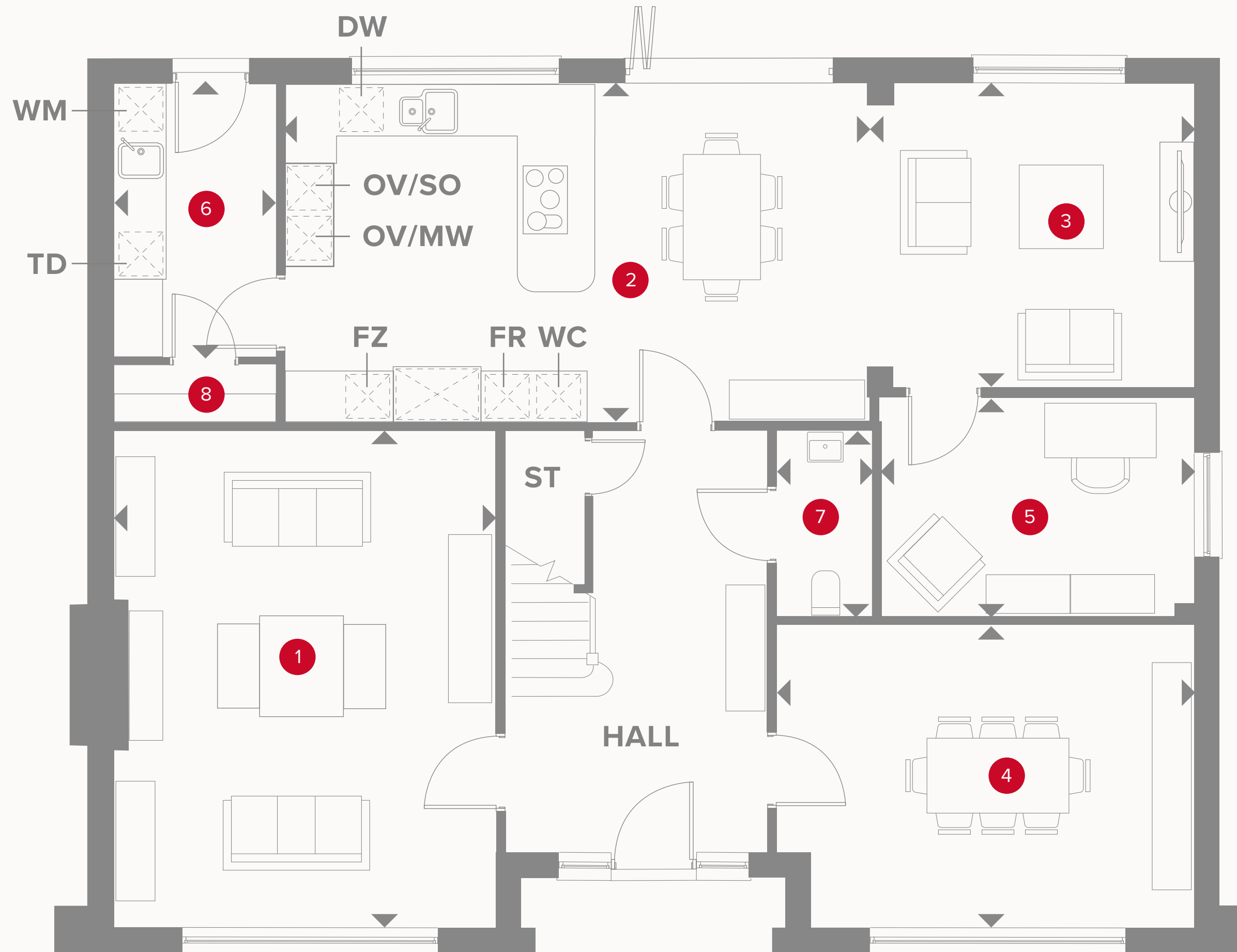
- REDROW -

THE HIGHGROVE

FIVE BEDROOM HOME



THE HIGHGROVE GROUND FLOOR



1	Lounge	17'11" x 13'0"	5.47 x 3.97 m
2	Kitchen/Breakfast	27'8" x 12'4"	8.44 x 3.76 m
3	Family	11'10" x 12'7"	3.60 x 3.84 m
4	Dining	16'2" x 11'10"	4.94 x 3.60 m
5	Study	12'2" x 8'6"	3.72 x 2.60 m
6	Utility	10'8" x 6'3"	3.25 x 1.90 m
7	Cloaks	7'3" x 3'8"	2.20 x 1.13 m
8	Larder	6'3" x 2'2"	1.90 x 0.66 m



KEY

Hob
OV Oven
FR Fridge
FZ Freezer

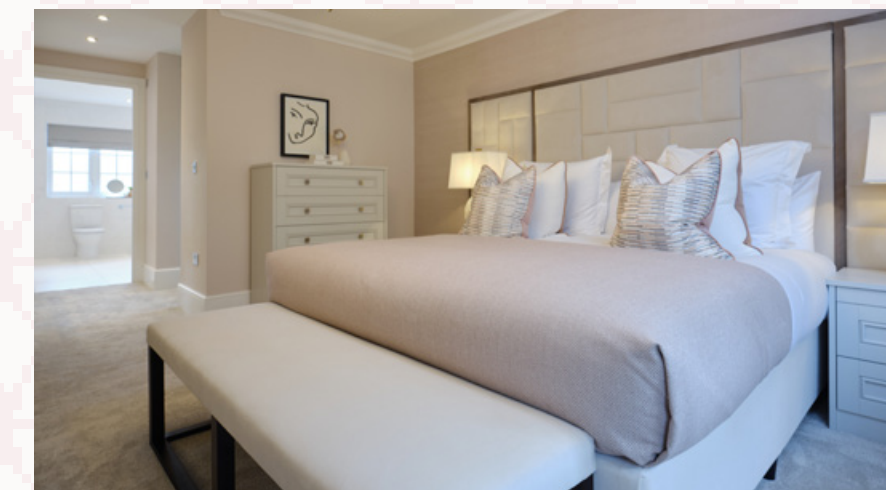
Dimensions start
TD Tumble dryer space
WM Washing machine space
DW Dishwasher space

ST Storage cupboard
WC Wine cooler
MW Microwave
SO Steam Oven

THE HIGHGROVE FIRST FLOOR



9	Bedroom 1	15'1" x 14'10"	4.59 x 4.51 m
10	Dressing	11'7" x 7'5"	3.54 x 2.26 m
11	En-Suite 1	11'2" x 10'1"	3.41 x 3.07 m
12	Bedroom 2	13'7" x 11'8"	4.15 x 3.55 m
13	En-suite 2	8'10" x 4'1"	2.70 x 1.25 m
14	Bedroom 3	13'1" x 10'2"	3.99 x 3.10 m
15	En-suite 3	8'10" x 4'1"	2.70 x 1.25 m
16	Bedroom 4	13'4" x 11'10"	4.07 x 3.60 m
17	Bedroom 5	11'2" x 9'9"	3.41 x 2.98 m
18	Bathroom	9'9" x 6'7"	2.98 x 2.01 m



KEY

- ◀ Dimensions start
- HW Hot water storage



Customers should note this illustration is an example of the Highgrove house type. All dimensions indicated are approximate and the furniture layout is for illustrative purposes only. Homes may be 'handed' (mirror image) versions of the illustrations, and may be detached, semi-detached or terraced. Materials used may differ from plot to plot including render and roof tile colours. Detailed plans and specifications are available for inspection for each plot at our Sales Centre during working hours and customers must check their individual specifications prior to making a reservation.