



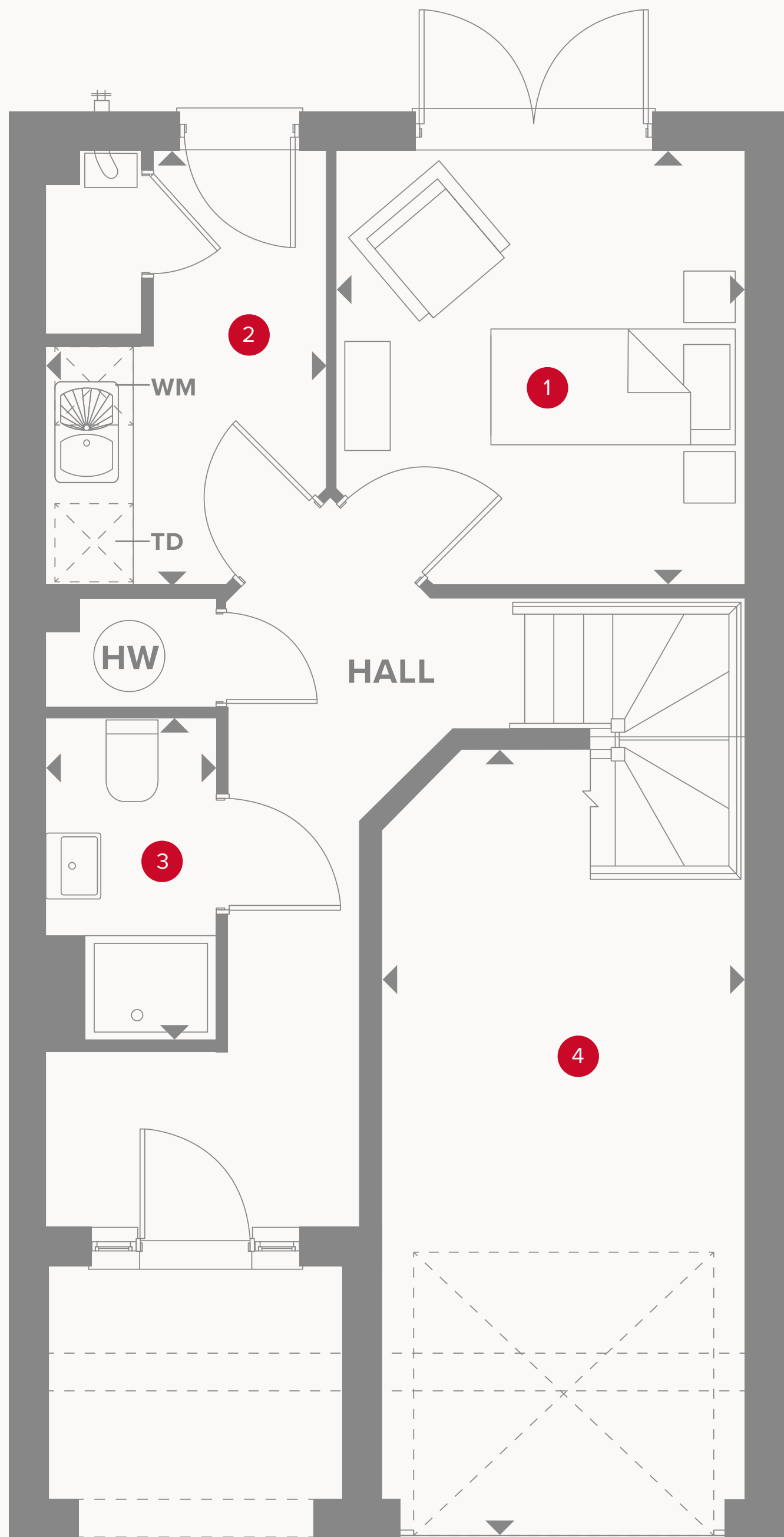
HERITAGE

- REDROW -

THE KENSINGTON MID

FOUR BEDROOM HOME

 **REDROW**



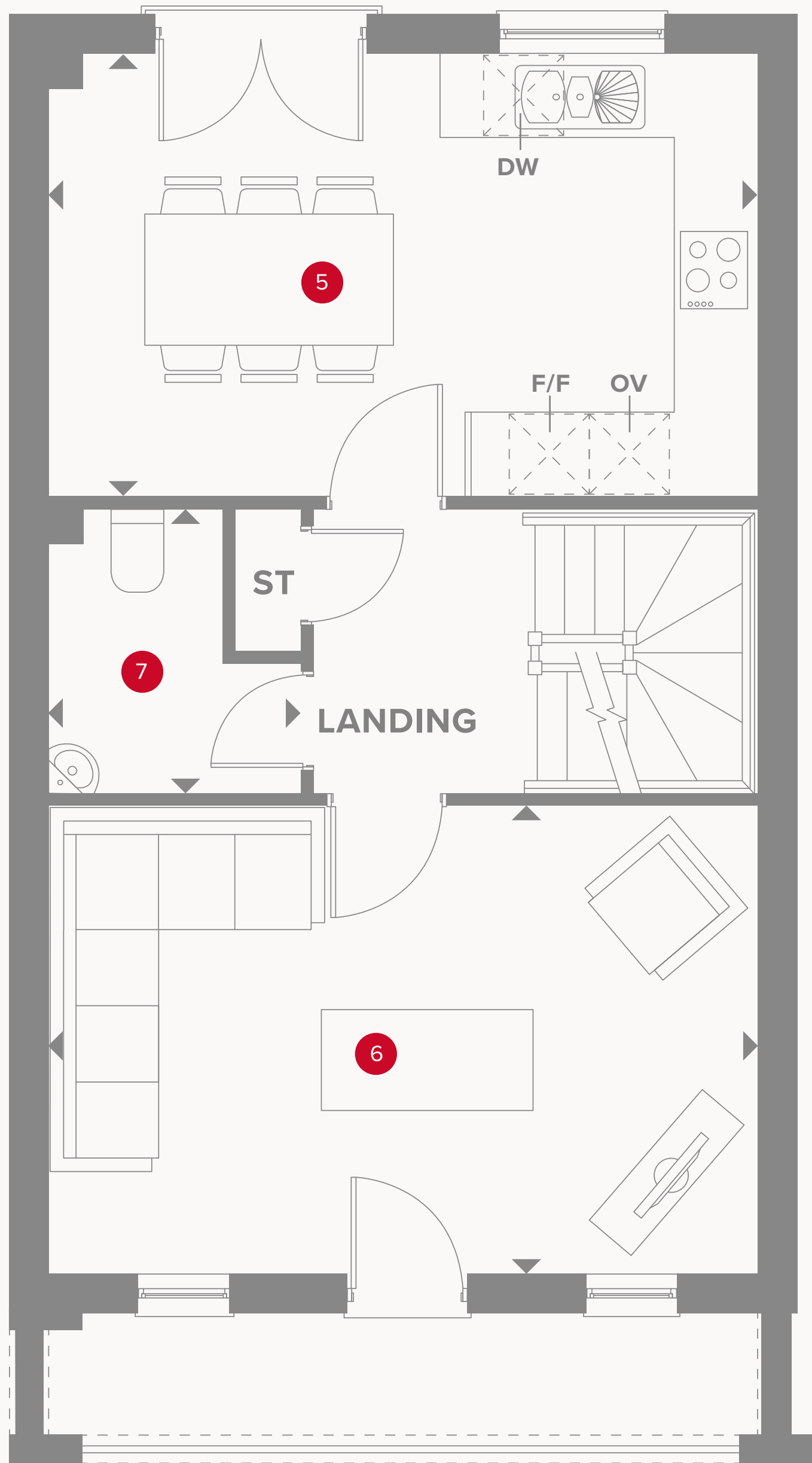
THE KENSINGTON MID GROUND FLOOR

1	Study/Bedroom 4	10'8" x 10'1"	3.27 x 3.09 m
2	Utility	10'9" x 7'0"	3.30 x 2.14 m
3	Cloaks 1	8'0" x 4'2"	2.46 x 1.28 m
4	Garage	19'3" x 9'1"	5.82 x 2.77 m



KEY

- TD** Tumble dryer space
- WM** Washing machine space
- HW** Hot water storage
- ◀ Dimensions start






THE KENSINGTON MID FIRST FLOOR

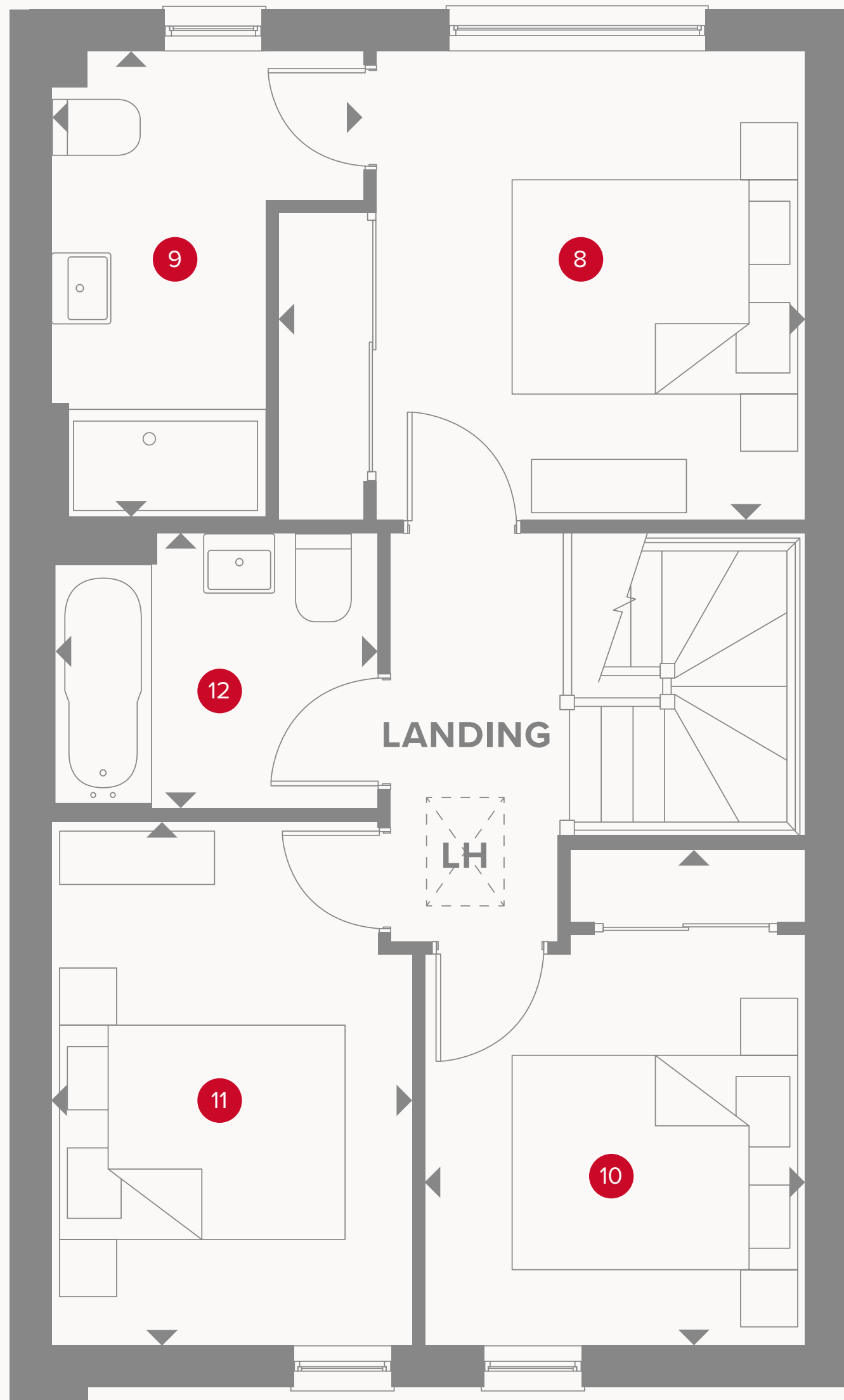
5	Kitchen/Dining	17'4" x 10'8"	5.30 x 3.27 m
6	Lounge	17'4" x 11'5"	5.30 x 3.50 m
7	Cloaks 2	7'0" x 6'1"	2.14 x 1.87 m



KEY

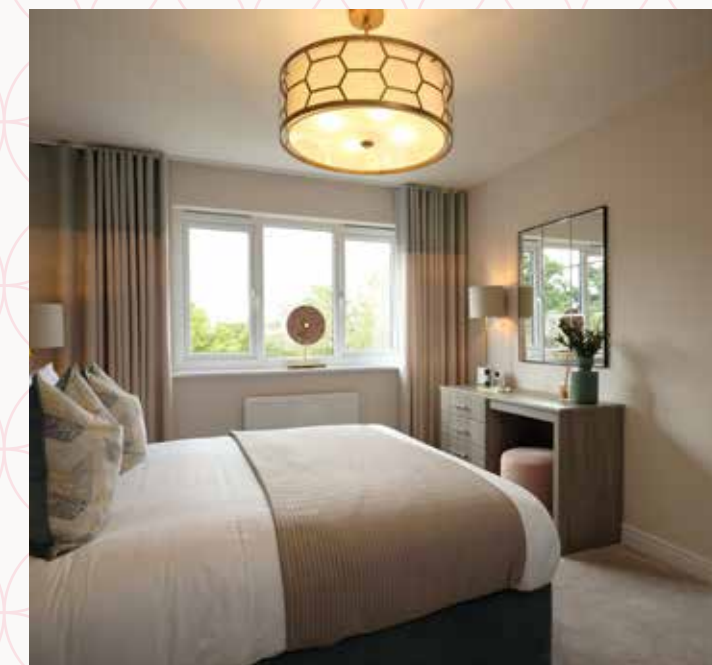
-  Hob
-  Oven
-  Fridge/freezer

-  Dish washer space
-  Storage cupboard
-  Dimensions start



THE KENSINGTON MID SECOND FLOOR

8	Bedroom 1	12'11" x 10'9"	3.70 x 3.30 m
9	En-suite	10'9" x 7'2"	3.30 x 2.19 m
10	Bedroom 2	11'5" x 8'9"	3.50 x 2.67 m
11	Bedroom 3	12'1" x 8'3"	3.70 x 2.53 m
12	Bathroom	7'6" x 6'4"	2.30 x 1.95 m



**CONSUMER
CODE FOR
HOME BUILDERS**
www.consumercode.co.uk

Customers should note this illustration is an example of the Kensington Mid house type. All dimensions indicated are approximate and the furniture layout is for illustrative purposes only. Homes may be 'handed' (mirror image) versions of the illustrations, and may be detached, semi-detached or terraced. Materials used may differ from plot to plot including render and roof tile colours. Detailed plans and specifications are available for inspection for each plot at our Sales Centre during working hours and customers must check their individual specifications prior to making a reservation.

KEY

- ◀ Dimensions start
- LH Loft hatch