



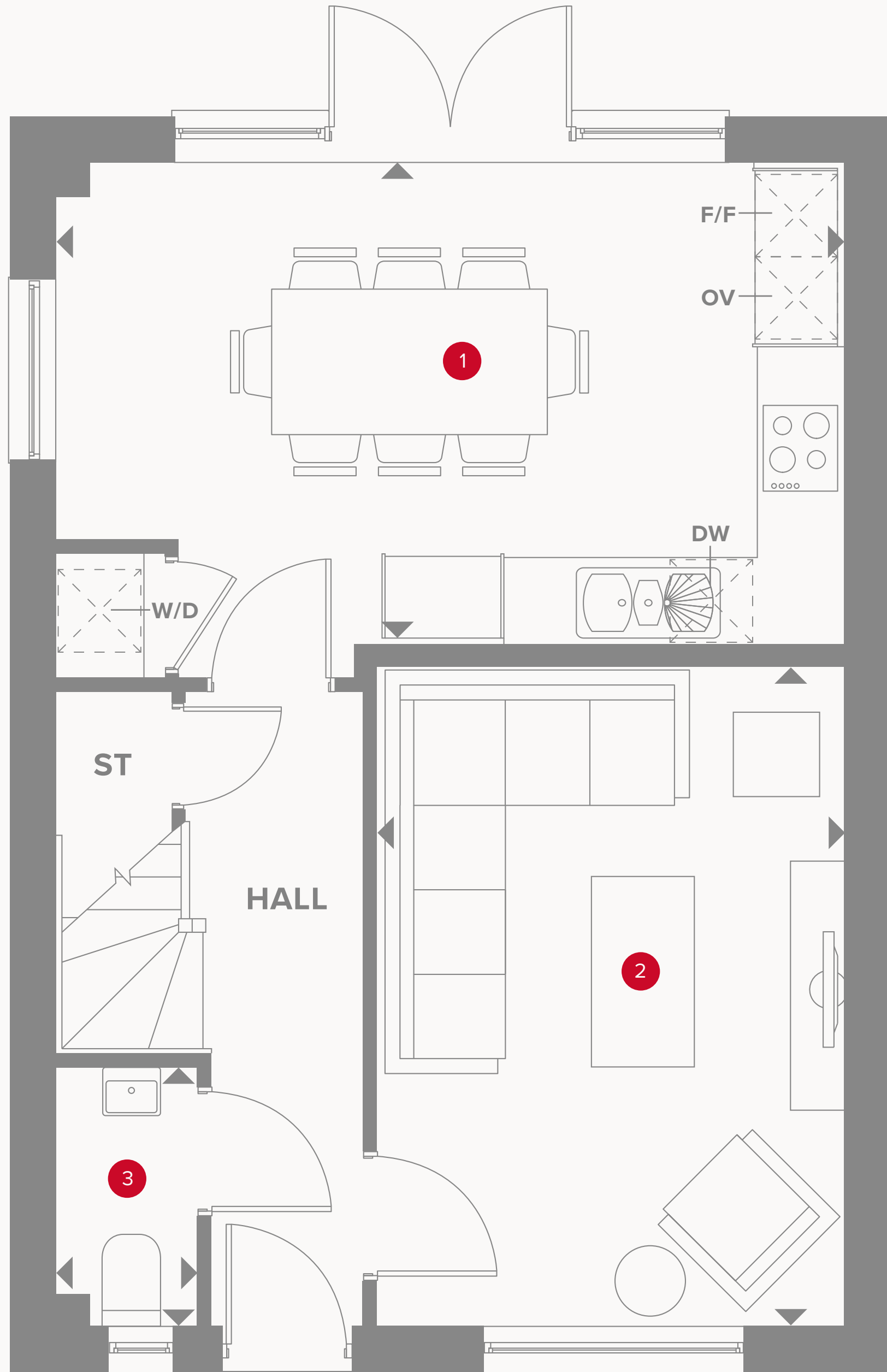
HERITAGE

- REDROW -

THE LINCOLN

FOUR BEDROOM HOME





THE LINCOLN GROUND FLOOR

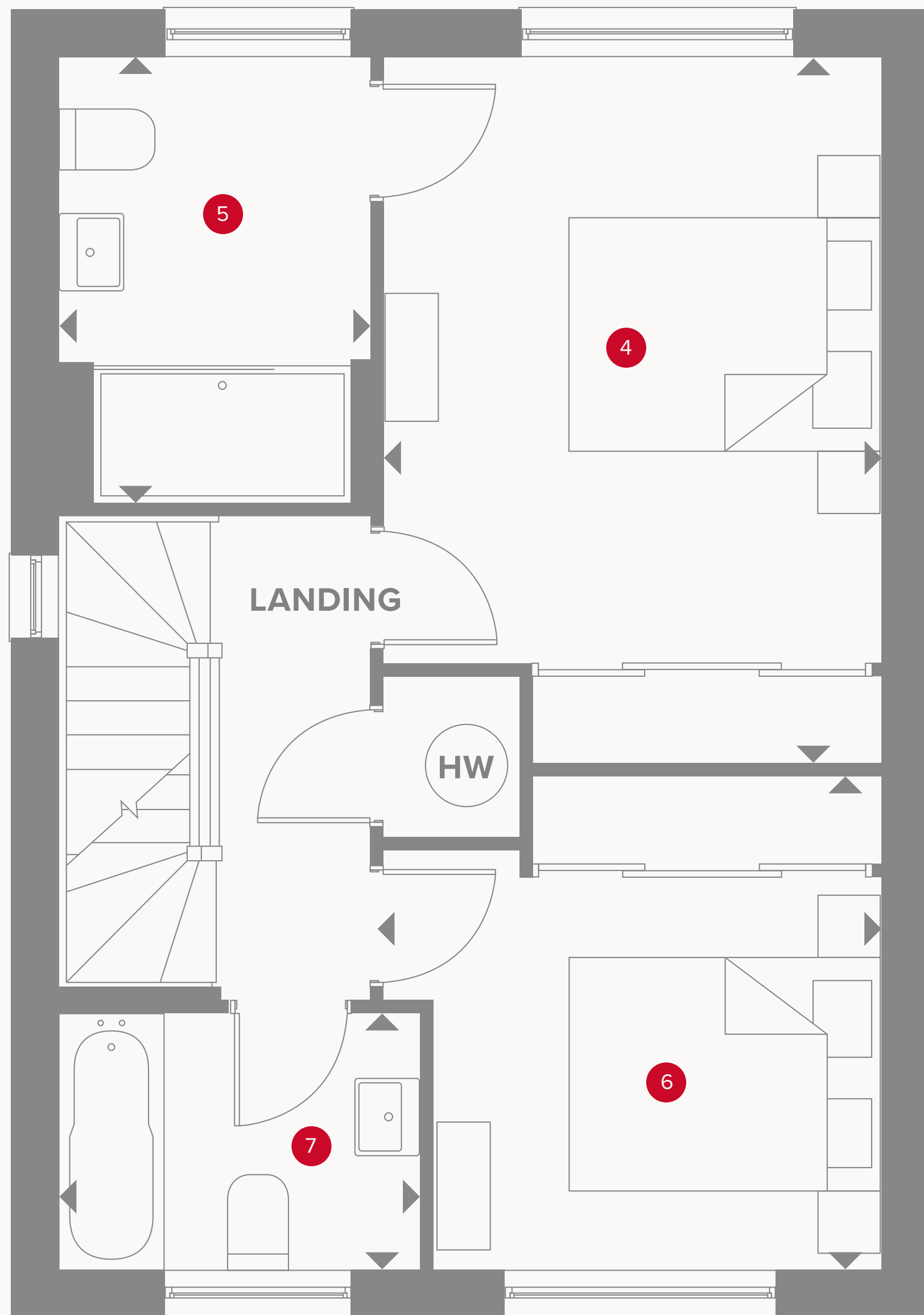
1	Kitchen/Dining	17'9" x 11'0"	5.43 x 3.36 m
2	Lounge	14'11" x 10'6"	4.55 x 3.22 m
3	Cloaks	5'11" x 3'2"	1.78 x 0.97 m



KEY

- Hob
- OV** Oven
- FF** Fridge/freezer
- W/D** Washer/ dryer space

- Dimensions start
- ST** Storage cupboard
- DW** Dish washer space



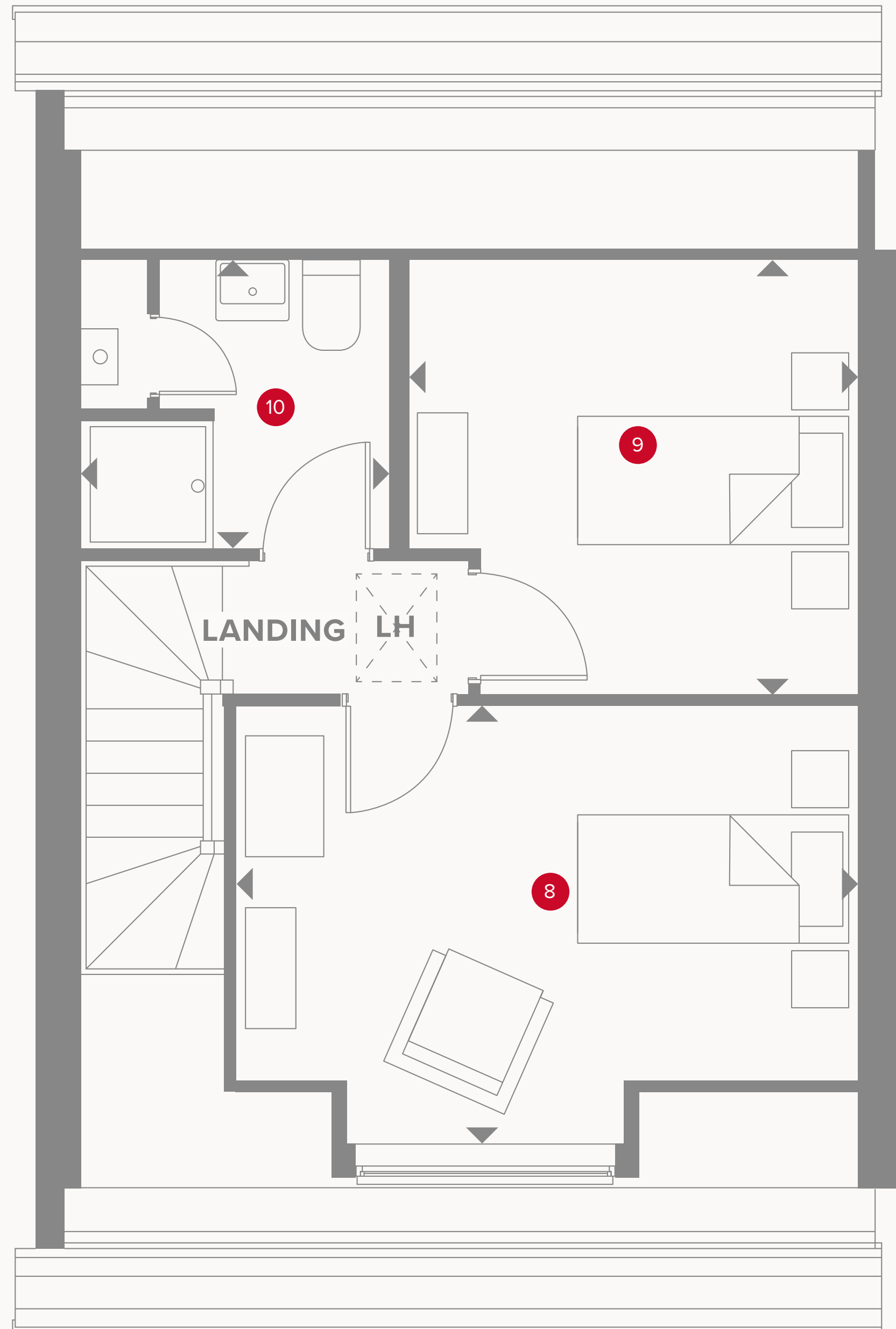
THE LINCOLN FIRST FLOOR

4	Bedroom 1	15'3" x 10'11"	4.61 x 3.29 m
5	En-suite	9'7" x 6'8"	2.93 x 2.05 m
6	Bedroom 2	10'9" x 10'8"	3.29 x 3.27 m
7	Bathroom 1	7'8" x 5'6"	2.36 x 1.70 m



KEY

- HW Hot water storage
- ◀ Dimensions start



THE LINCOLN SECOND FLOOR

8	Bedroom 3	14'2" x 10'0"	4.33 x 3.06 m
9	Bedroom 4	10'2" x 9'11"	3.12 x 3.04 m
10	Bathroom 2	7'0" x 6'7"	2.14 x 2.02 m



**CONSUMER
CODE FOR
HOME BUILDERS**
www.consumercode.co.uk

Customers should note this illustration is an example of the Lincoln house type. All dimensions indicated are approximate and the furniture layout is for illustrative purposes only. Homes may be 'handed' (mirror image) versions of the illustrations, and may be detached, semi-detached or terraced. Materials used may differ from plot to plot including render and roof tile colours. Detailed plans and specifications are available for inspection for each plot at our Sales Centre during working hours and customers must check their individual specifications prior to making a reservation.

KEY

- ◀ Dimensions start
- LH Loft hatch