



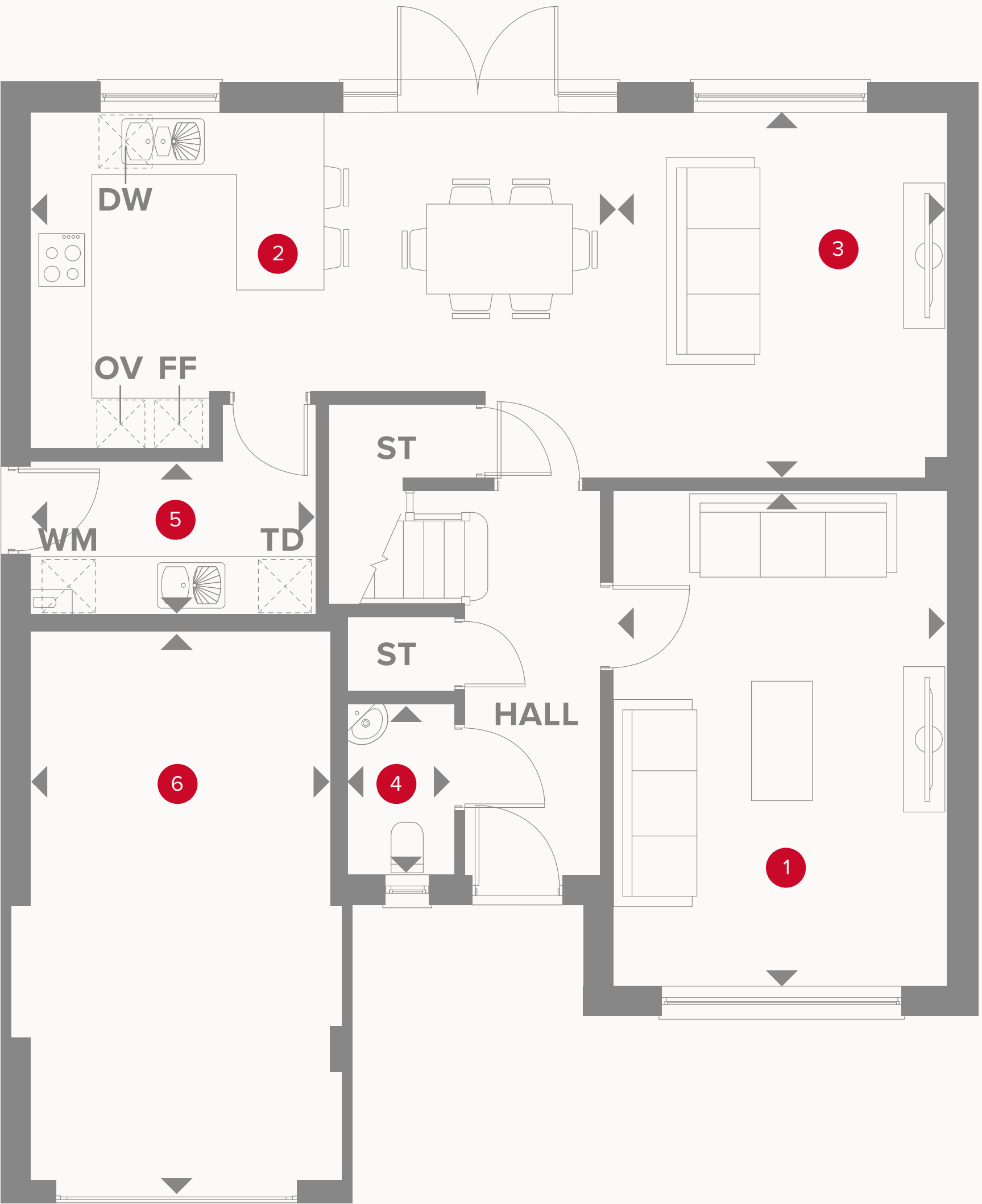
HERITAGE

- REDROW -

THE CHESTER

FOUR BEDROOM HOME





Plots 315 & 434 are handed.

THE CHESTER GROUND FLOOR

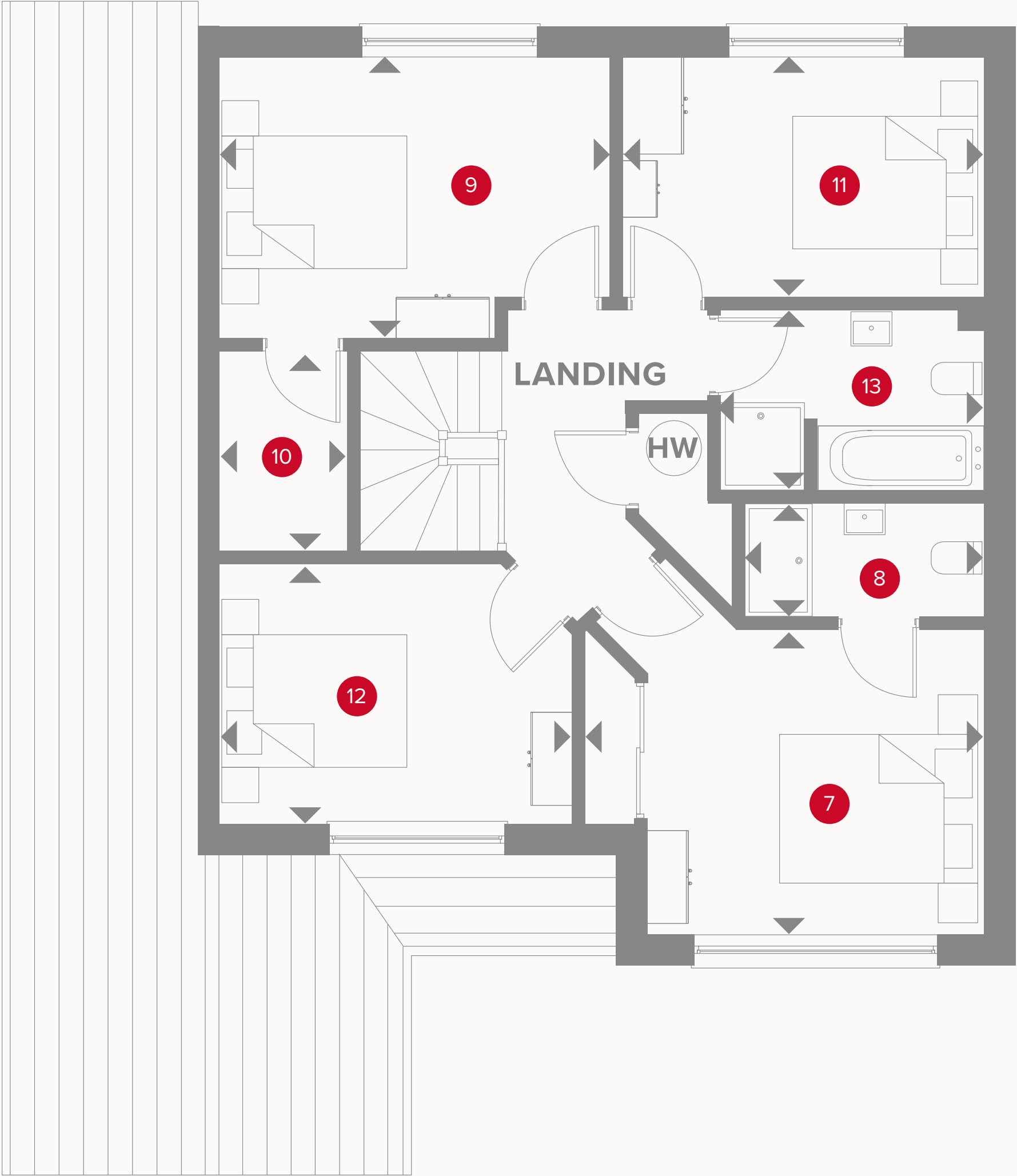
1	Lounge	16'7" x 11'4"	5.06 x 3.45 m
2	Kitchen/Dining	19'3" x 11'6"	5.86 x 3.51 m
3	Family	12'5" x 11'8"	3.80 x 3.55 m
4	Cloaks	5'11" x 3'11"	1.80 x 1.19 m
5	Utility	9'8" x 5'5"	2.95 x 1.65 m
6	Garage	18'4" x 10'10"	5.63 x 3.08 m



KEY

- Hob
- OV** Oven
- FF** Fridge/freezer
- TD** Tumble dryer space

- Dimensions start
- ST** Storage cupboard
- WM** Washing machine space
- DW** Optional dishwasher



THE CHESTER FIRST FLOOR

7	Bedroom 1	13'6" x 10'4"	4.11 x 3.15 m
8	En-suite	8'2" x 3'11"	2.48 x 1.20 m
9	Bedroom 2	13'3" x 9'7"	4.03 x 2.92 m
10	Wardrobe	6'11" x 4'5"	2.10 x 1.35 m
11	Bedroom 3	12'2" x 8'2"	3.71 x 2.50 m
12	Bedroom 4	12'0" x 8'11"	3.65 x 2.71 m
13	Bathroom	12'3" x 6'2"	3.73 x 1.89 m



KEY

- ◀ Dimensions start
- HW Hot water storage



Customers should note this illustration is an example of the Chester house type. All dimensions indicated are approximate and the furniture layout is for illustrative purposes only. Homes may be 'handed' (mirror image) versions of the illustrations, and may be detached, semi-detached or terraced. Materials used may differ from plot to plot including render and roof tile colours. Detailed plans and specifications are available for inspection for each plot at our Sales Centre during working hours and customers must check their individual specifications prior to making a reservation.