



The Harlech

Four Bedroom Home

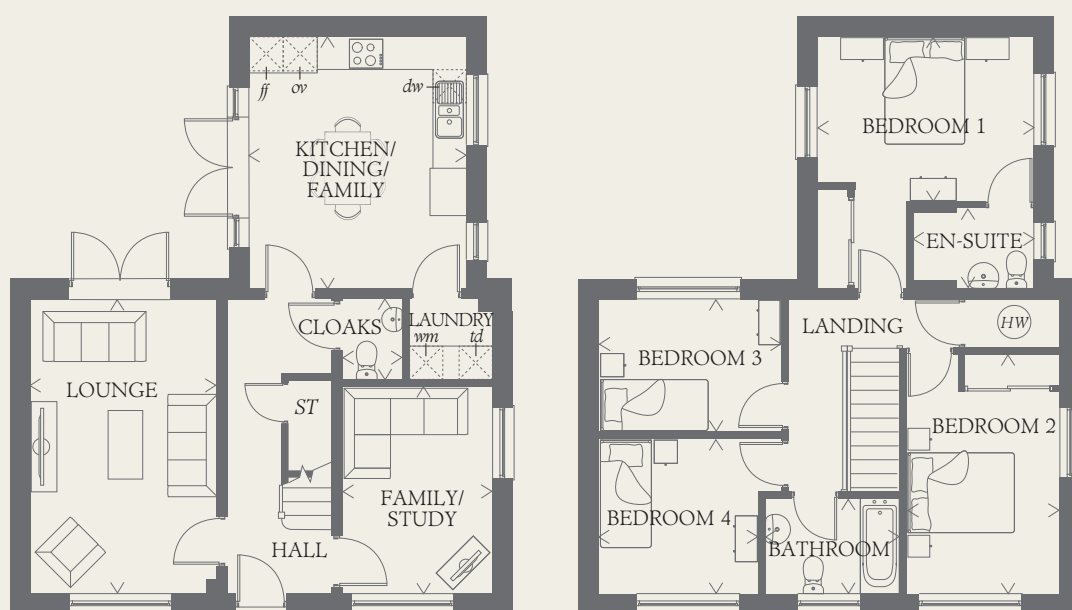




The Harlech

Four Bedroom Home

The Harlech offers the ideal backdrop to modern family life. Interior layouts have been designed to provide the elements of flexibility and choice, making excellent use of space throughout and showcasing our keen attention to detail.



Plot 463 is handed

GROUND FLOOR

LOUNGE	17'1" x 10'10"	5.21 x 3.31 m
KITCHEN/ DINING/ FAMILY	14'8" x 12'8"	4.46 x 3.86 m
FAMILY/ STUDY	12'0" x 8'7"	3.66 x 2.66 m
CLOAKS	4'9" x 3'7"	1.44 x 1.08 m
LAUNDRY	4'10" x 4'9"	1.48 x 1.44 m

FIRST FLOOR

BEDROOM 1	12'8" x 9'5"	3.86 x 2.92 m
EN-SUITE	7'1" x 4'9"	2.16 x 1.44 m
BEDROOM 2	13'11" x 8'11"	4.23 x 2.73 m
BEDROOM 3	10'8" x 7'9"	3.24 x 2.37 m
BEDROOM 4	9'4" x 9'0"	2.84 x 2.75 m
BATHROOM	7'10" x 5'7"	2.39 x 1.71 m

CONSUMER CODE FOR HOME BUILDERS

www.consumercode.co.uk

Customers should note this illustration is an example of the Harlech house type. All dimensions indicated are approximate and the furniture layout is for illustrative purposes only. Homes may be 'handed' (mirror image) versions of the illustrations, and may be detached, semi-detached or terraced. Materials used may differ from plot to plot including render and roof tile colours. Detailed plans and specifications are available for inspection for each plot at our Sales Centre during working hours and customers must check their individual specifications prior to making a reservation.

KEY

Hob	<i>td</i> Tumble dryer space
<i>ov</i> Oven	Hot water cylinder
<i>ff</i> Fridge/freezer	<i>ST</i> Cupboard
<i>wm</i> Washing machine space	
<i>dw</i> Dishwasher space	

< Denotes where dimensions are taken from. All wardrobes are subject to site specification. Please see Sales Consultant for further details.

EF_HARL_DM.1