



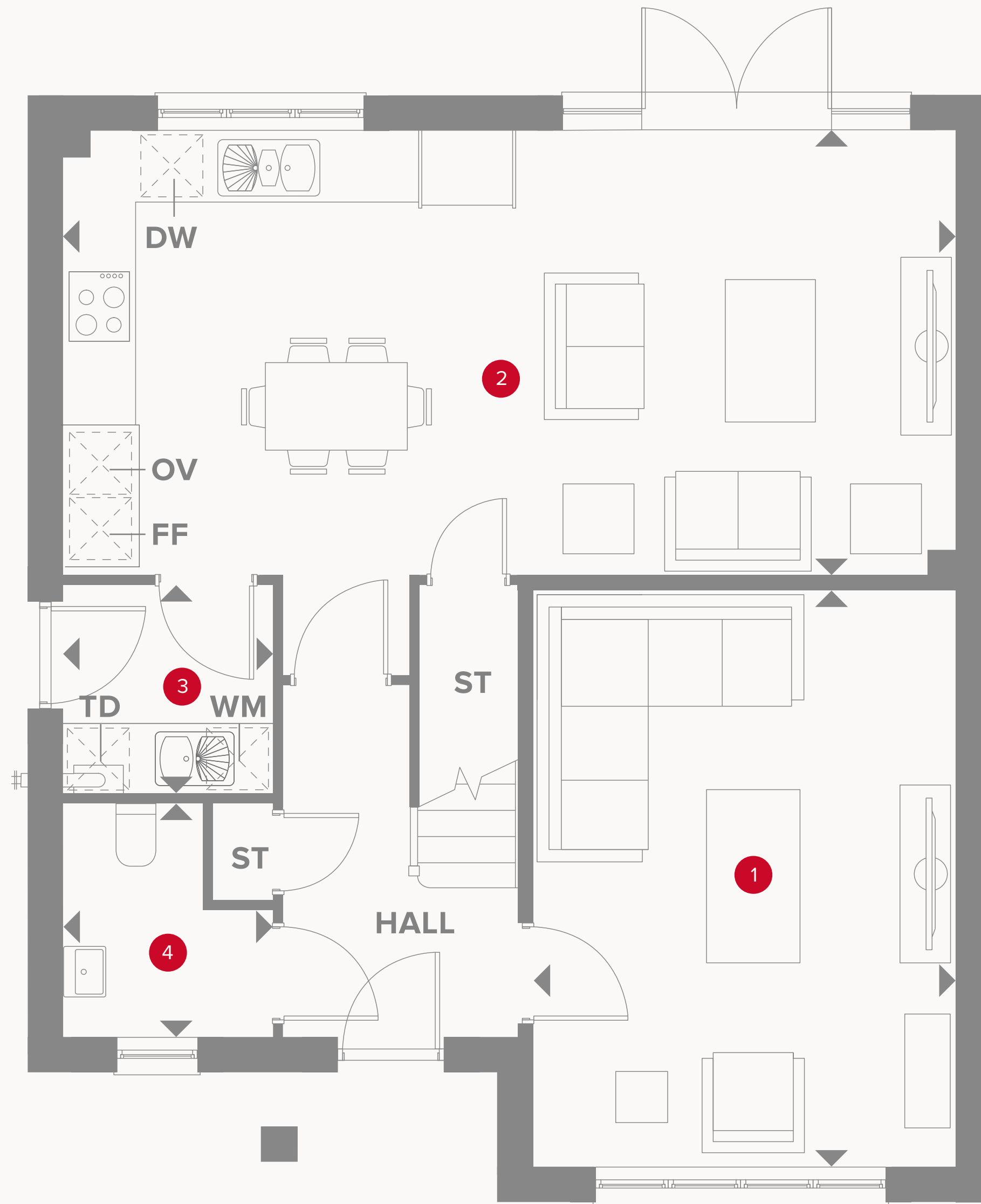
HERITAGE

- REDROW -

THE CAMBRIDGE

FOUR BEDROOM DETACHED HOME






Plots 527, 529, 532, 565, 567, 606 & 623 are handed


THE CAMBRIDGE GROUND FLOOR

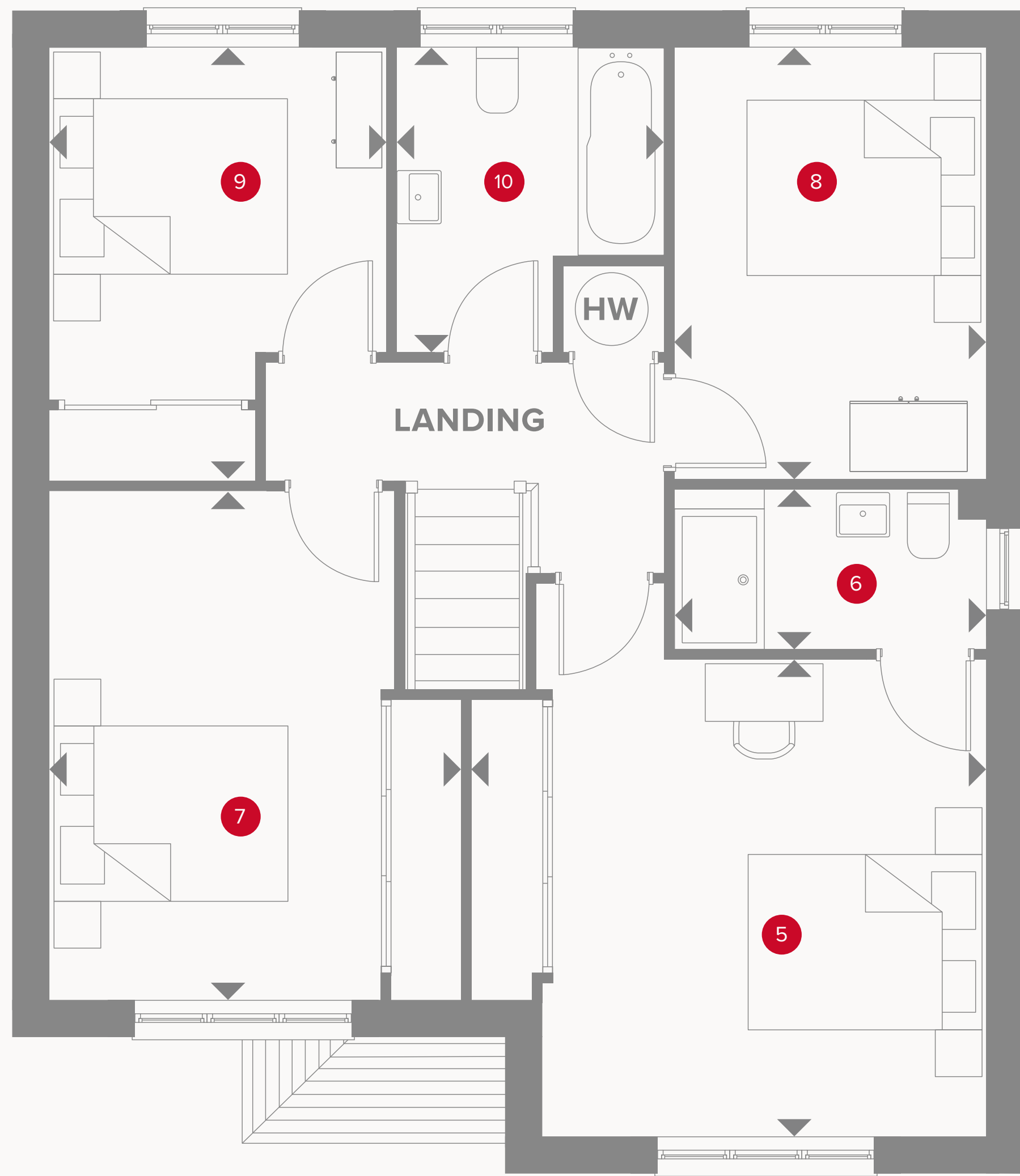
| | | | |
|---|-----------------------|---------------|---------------|
| 1 | Lounge | 16'3" x 12'0" | 4.95 x 3.63 m |
| 2 | Kitchen/Dining/Family | 25'3" x 12'6" | 7.68 x 3.82 m |
| 3 | Utility | 6'0" x 5'9" | 1.81 x 1.80 m |
| 4 | Cloaks | 6'6" x 5'9" | 1.99 x 1.80 m |



KEY

 Hob
OV Oven
FF Fridge/freezer
TD Tumble dryer space

 Dimensions start
ST Storage cupboard
WM Washing machine space
DW Dish washer space



THE CAMBRIDGE FIRST FLOOR

| | | | |
|----|-----------|---------------|---------------|
| 5 | Bedroom 1 | 13'9" x 12'8" | 4.22 x 3.89 m |
| 6 | En-suite | 8'4" x 3'9" | 2.56 x 1.30 m |
| 7 | Bedroom 2 | 13'4" x 11'1" | 4.18 x 3.37 m |
| 8 | Bedroom 3 | 11'7" x 8'4" | 3.52 x 2.56 m |
| 9 | Bedroom 4 | 12'1" x 9'1" | 3.53 x 2.76 m |
| 10 | Bathroom | 8'2" x 7'2" | 2.49 x 2.17 m |



**CONSUMER
CODE FOR
HOME BUILDERS**
www.consumercode.co.uk

Customers should note this illustration is an example of the Cambridge house type. All dimensions indicated are approximate and the furniture layout is for illustrative purposes only. Homes may be 'handed' (mirror image) versions of the illustrations, and may be detached, semi-detached or terraced. Materials used may differ from plot to plot including render and roof tile colours. Detailed plans and specifications are available for inspection for each plot at our Customer Experience Suites during working hours and customers must check their individual specifications prior to making a reservation. Computer generated images are for indicative purposes only.

KEY

- ◀ Dimensions start
- HW** Hot water cylinder

Plots 527, 529, 532, 565, 567, 606 & 623 are handed