



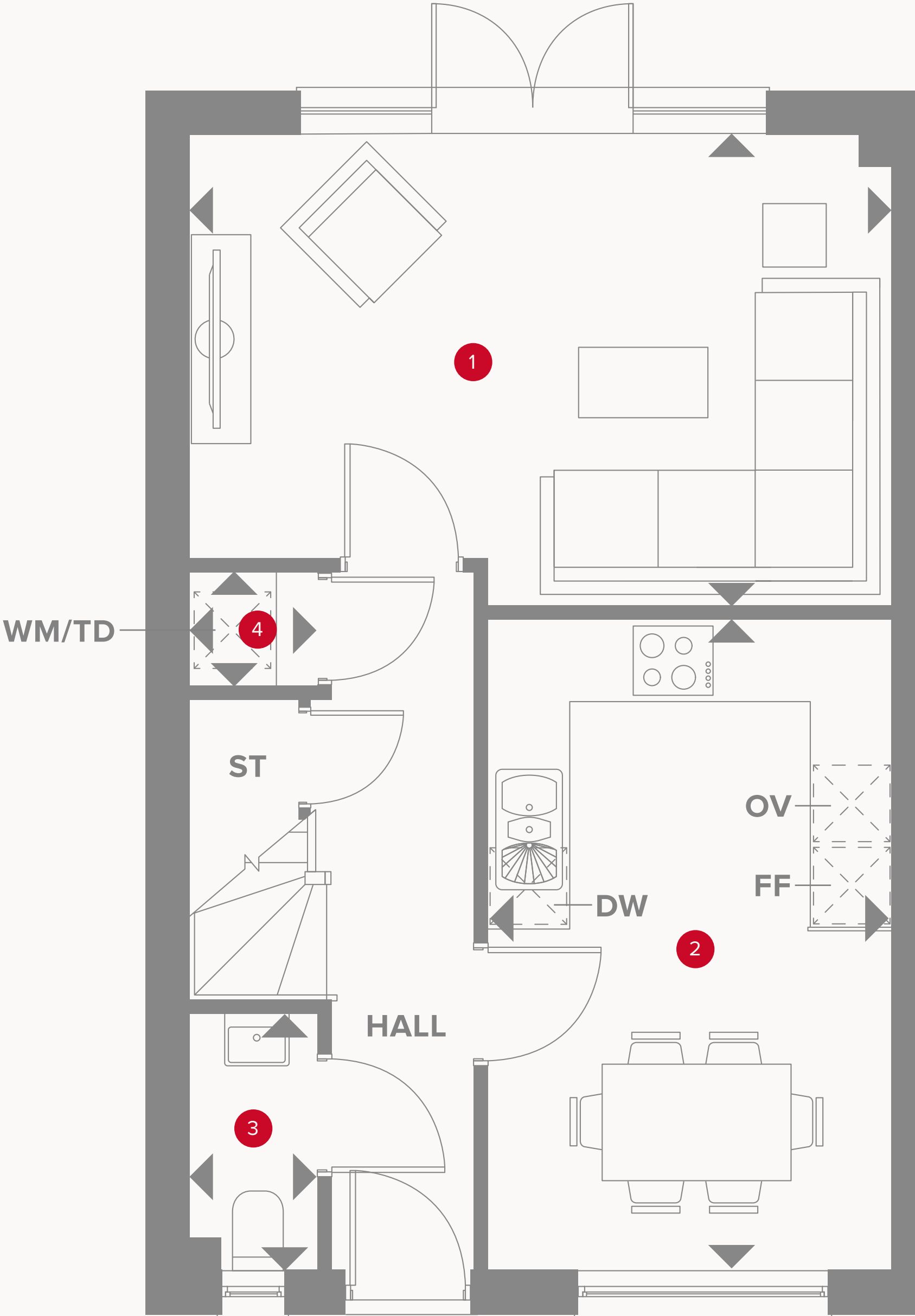
HERITAGE

- REDROW -

THE GRANTHAM

FOUR BEDROOM END-TERRACE /
SEMI-DETACHED HOME





THE GRANTHAM GROUND FLOOR

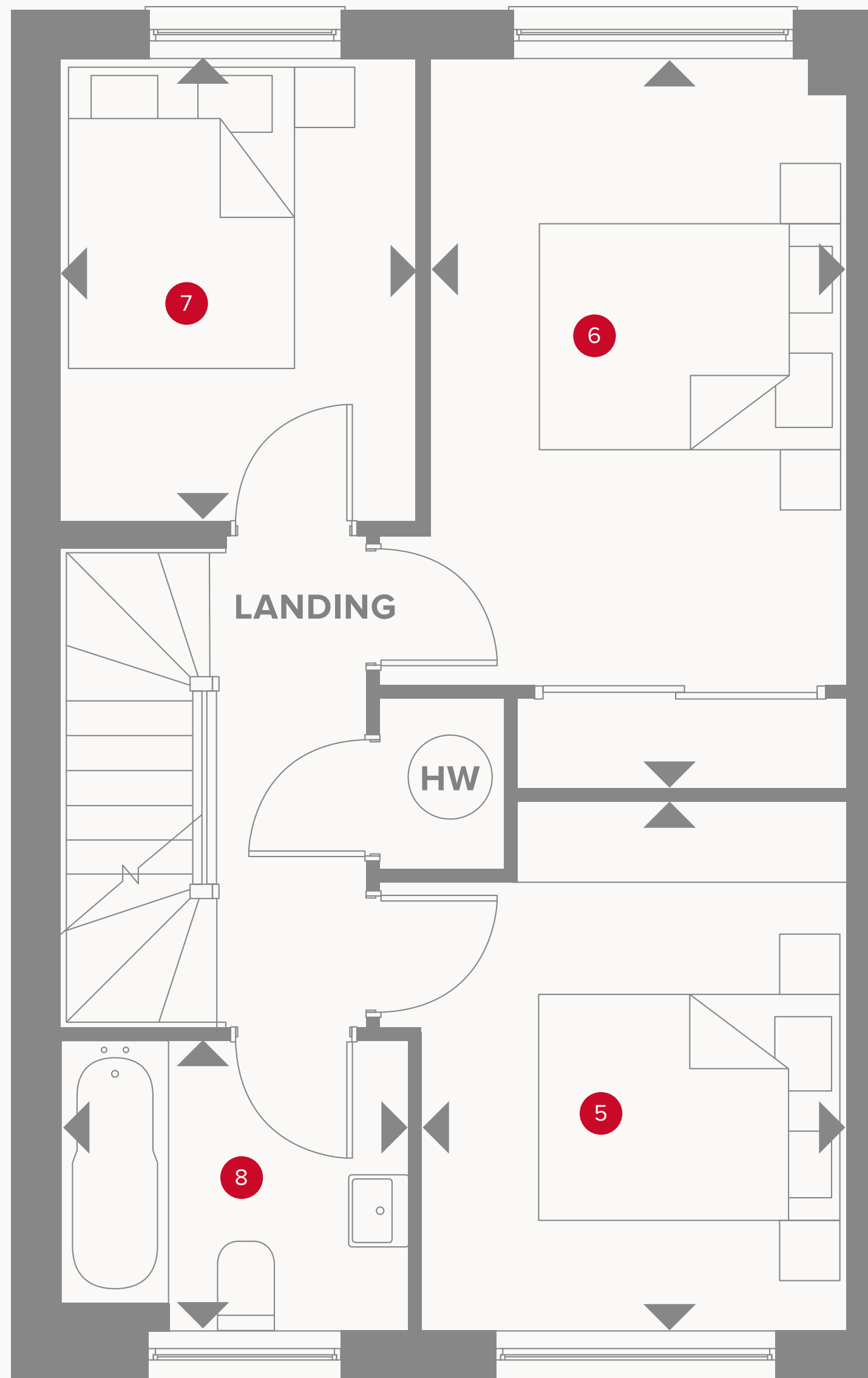
1 Lounge	16'8" x 11'3"	5.09 x 3.43 m
2 Kitchen/Dining	15'6" x 9'7"	4.73 x 2.93 m
3 Cloaks	6'2" x 3'0"	1.87 x 0.93 m
4 Laundry	3'1" x 2'7"	0.94 x 0.84 m



KEY

- Hob
- OV Oven
- FF Fridge/freezer
- WM Washing machine space

- Dimensions start
- ST Storage cupboard
- DW Dish washer space



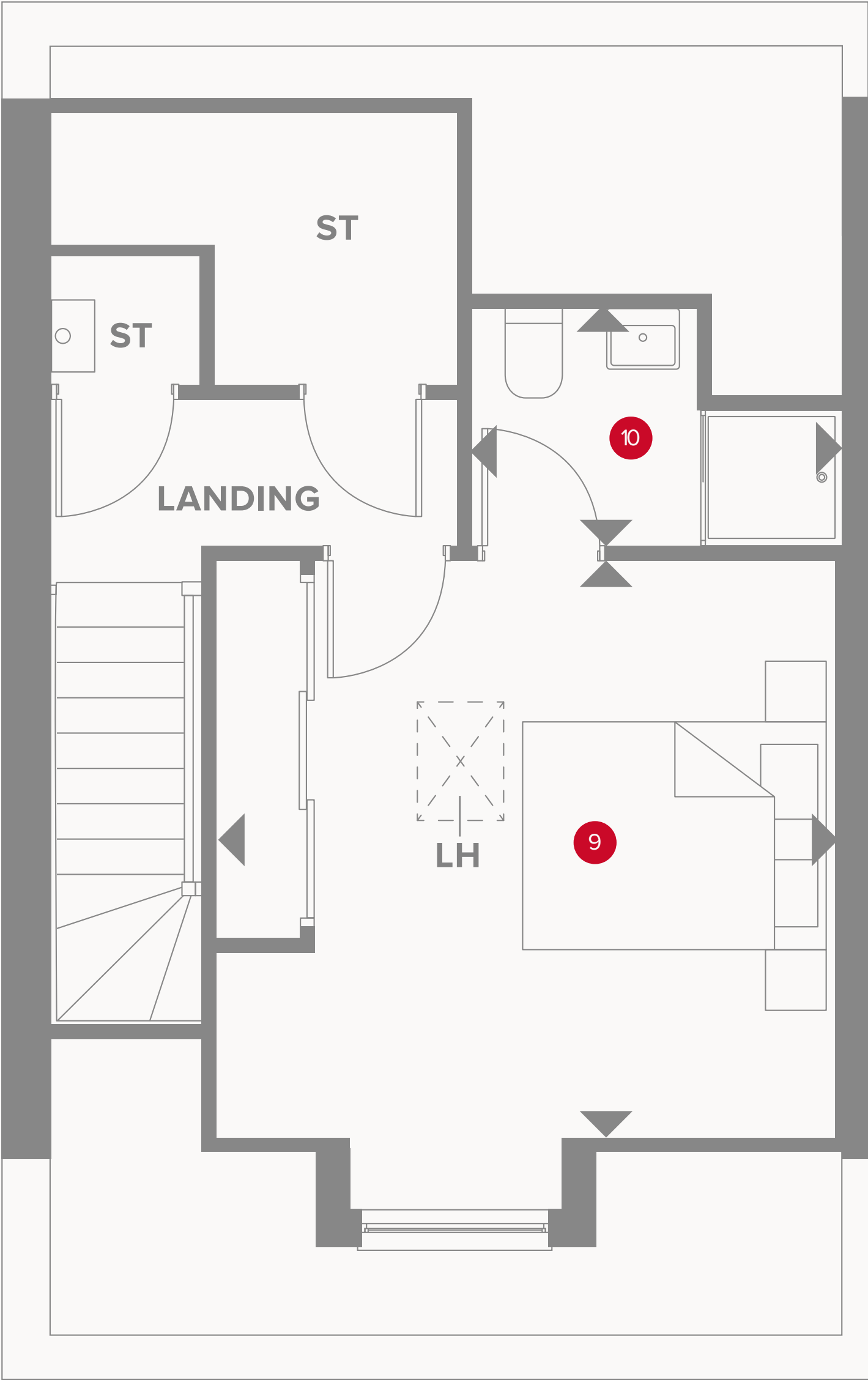
Plots 534, 561, 568, 580, 581, 586 & 622 are handed

THE GRANTHAM FIRST FLOOR

5	Bedroom 2	15'6" x 8'10"	4.73 x 2.70 m
6	Bedroom 3	11'3" x 9'0"	3.43 x 2.75 m
7	Bedroom 4	9'5" x 7'7"	3.00 x 2.30 m
8	Bathroom	7'5" x 6'2"	2.26 x 1.87 m



KEY
◀ Dimensions start
HW Hot water cylinder



Plots 534, 561, 568, 580, 581, 586 & 622 are handed

THE GRANTHAM SECOND FLOOR

9	Bedroom	13'7" x 13'1"	4.20 x 4.00 m
10	En-suite	7'10" x 5'1"	2.38 x 1.54 m



**CONSUMER
CODE FOR
HOME BUILDERS**

www.consumercode.co.uk

Customers should note this illustration is an example of the Grantham End house type. All dimensions indicated are approximate and the furniture layout is for illustrative purposes only. Homes may be 'handed' (mirror image) versions of the illustrations, and may be detached, semi-detached or terraced. Materials used may differ from plot to plot including render and roof tile colours. Detailed plans and specifications are available for inspection for each plot at our Customer Experience Suites during working hours and customers must check their individual specifications prior to making a reservation. Computer generated images are for indicative purposes only.

KEY

◀ Dimensions start **LH** Loft hatch
ST Storage cupboard