



HERITAGE
- REDROW -

THE
CAMBRIDGE
FOUR BEDROOM HOME





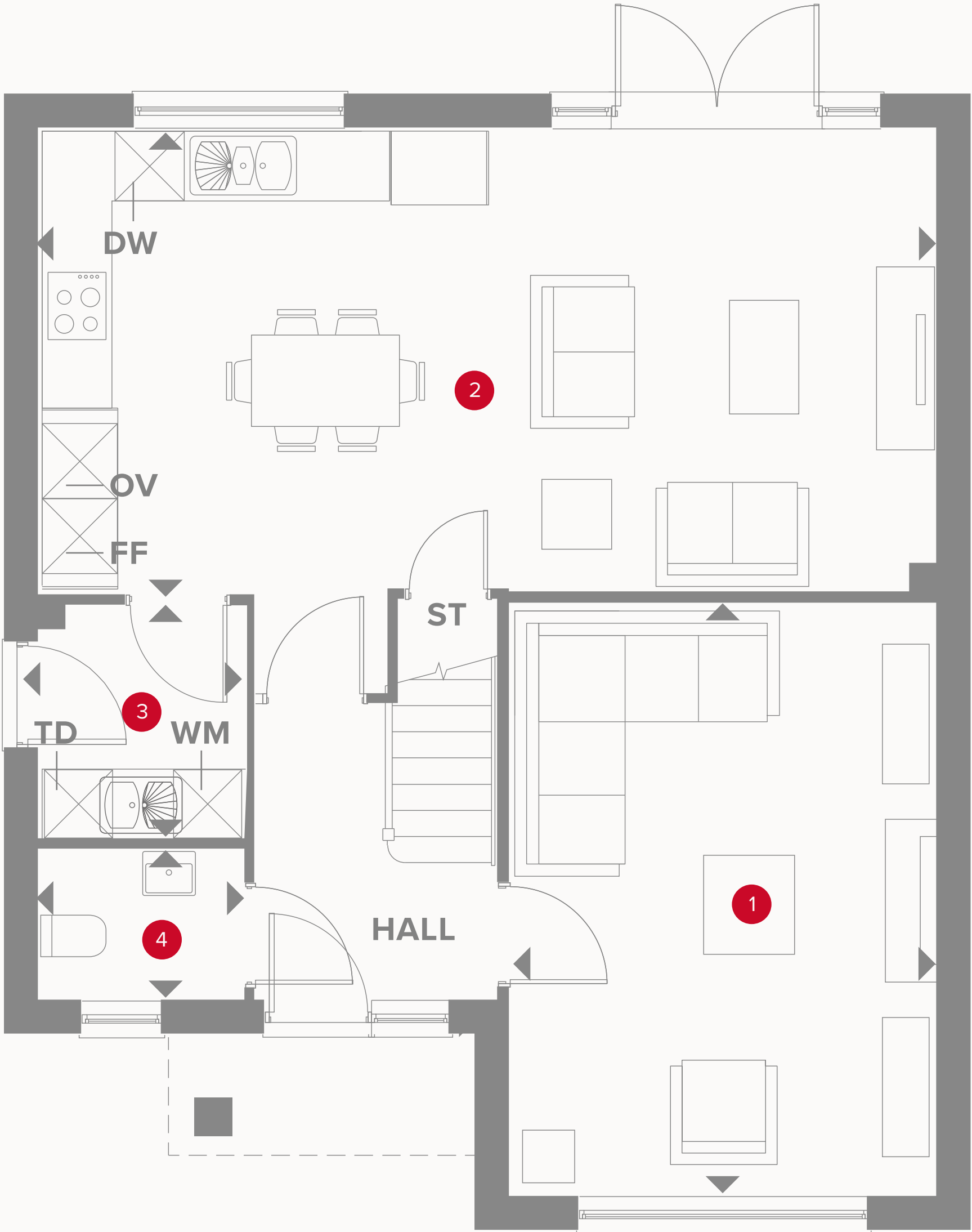
HERITAGE

- REDROW -

THE CAMBRIDGE

FOUR BEDROOM HOME





THE CAMBRIDGE GROUND FLOOR

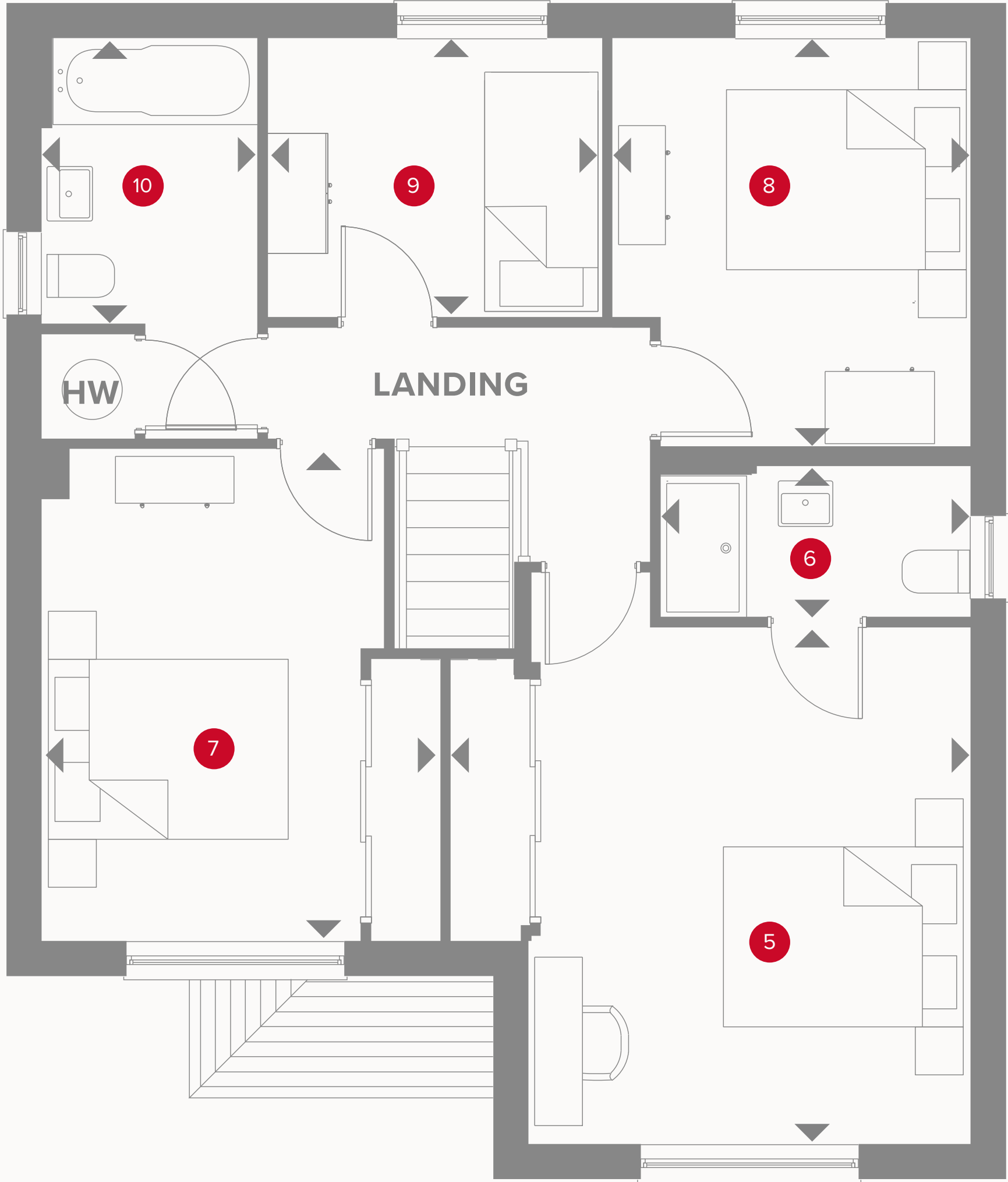
1	Lounge	16'7" x 11'11"	5.05 x 3.63 m
2	Kitchen/Dining/Family	25'2" x 13'1"	7.68 x 3.99 m
3	Utility	5'9" x 4'2"	1.75 x 1.28 m
4	Cloaks	6'7" x 5'9"	2.01 x 1.75 m



KEY

- Hob
- OV** Oven
- FF** Fridge/freezer
- TD** Tumble dryer space

- Dimensions start
- ST** Storage cupboard
- WM** Washing machine space
- DW** Dish washer space



THE CAMBRIDGE FIRST FLOOR

5	Bedroom 1	14'1" x 14'0"	4.30 x 4.27 m
6	En-suite	8'5" x 4'1"	2.56 x 1.25 m
7	Bedroom 2	13'4" x 10'10"	4.06 x 3.29 m
8	Bedroom 3	11'1" x 9'9"	3.37 x 2.96 m
9	Bedroom 4	9'1" x 7'6"	2.78 x 2.29 m
10	Bathroom	10'10" x 5'10"	3.30 x 1.77 m

