



HERITAGE

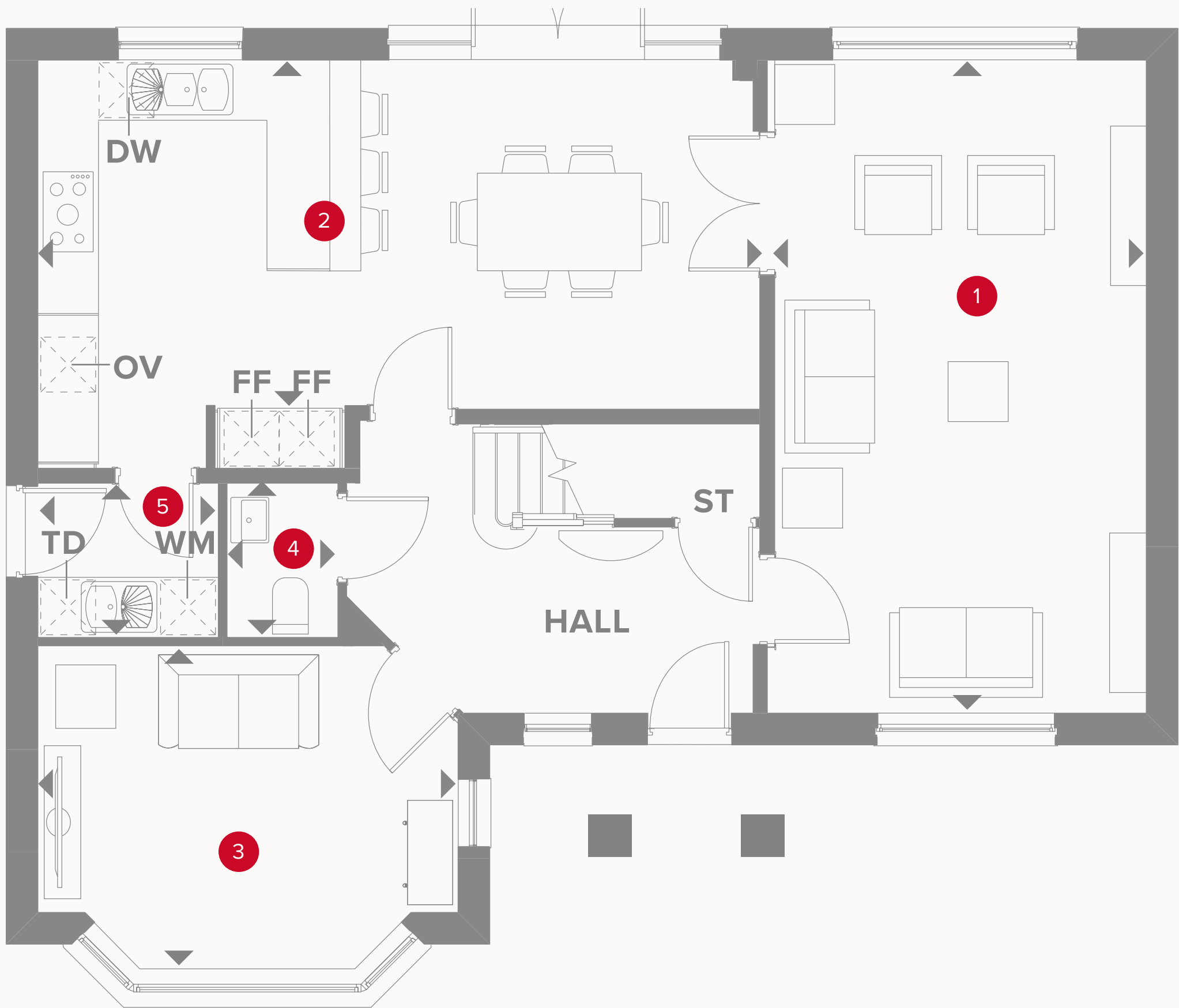
- REDROW -

THE BUDWORTH

FOUR BEDROOM HOME



THE BUDWORTH GROUND FLOOR



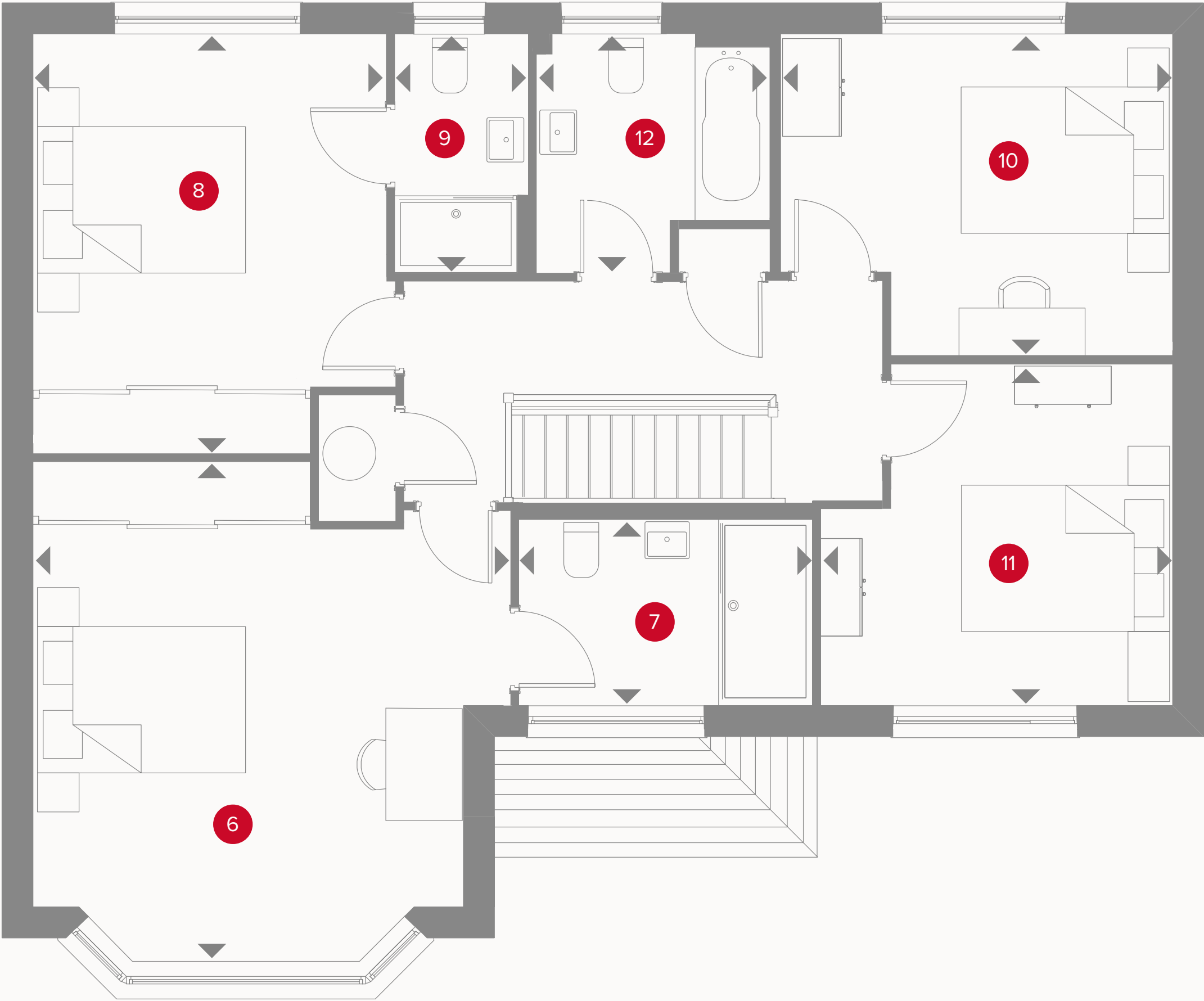
| | | | |
|---|----------------|---------------|---------------|
| 1 | Lounge | 21'5" x 12'5" | 6.55 x 3.81 m |
| 2 | Kitchen/Dining | 23'6" x 11'5" | 7.20 x 3.49 m |
| 3 | Family | 13'7" x 10'3" | 4.19 x 3.14 m |
| 4 | Cloaks | 5'0" x 3'6" | 1.54 x 1.10 m |
| 5 | Utility | 5'9" x 5'0" | 1.80 x 1.54 m |



KEY

- Hob
- OV** Oven
- FF** Fridge/freezer
- TD** Tumble dryer space

- Dimensions start
- ST** Storage cupboard
- WM** Washing machine space
- DW** Dish washer space



THE BUDWORTH FIRST FLOOR

| | | | |
|----|------------|---------------|---------------|
| 6 | Bedroom 1 | 15'8" x 15'3" | 4.83 x 4.67 m |
| 7 | En-suite 1 | 9'4" x 5'9" | 2.87 x 1.8 m |
| 8 | Bedroom 2 | 13'5" x 11'3" | 4.10 x 3.44 m |
| 9 | En-suite 2 | 7'6" x 4'2" | 2.33 x 1.31 m |
| 10 | Bedroom 3 | 12'6" x 10'3" | 3.83 x 3.15 m |
| 11 | Bedroom 4 | 11'3" x 10'9" | 3.44 x 3.31 m |
| 12 | Bathroom | 7'6" x 7'4" | 2.33 x 2.27 m |

