



INSPIRED

- REDROW -

THE LOSTOCK

FOUR BEDROOM HOME





THE LOSTOCK GROUND FLOOR

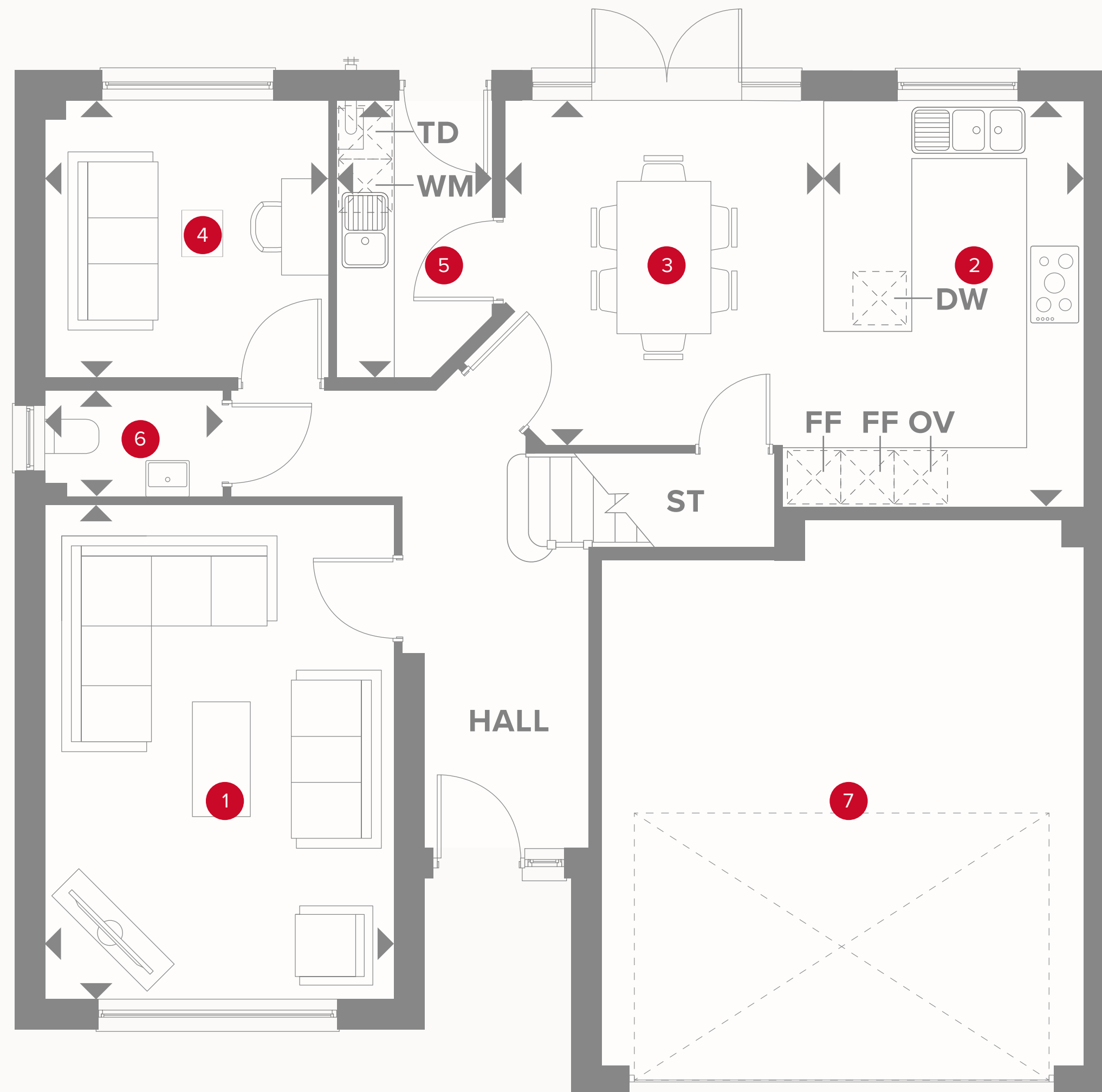
1 Lounge	11'9" x 16'9"	3.63 x 5.15m
2 Kitchen	10'2" x 13'9"	3.12 x 4.23m
3 Dining	9'5" x 11'8"	2.91 x 3.6m
4 Snug/Study	9'7" x 9'4"	2.96 x 2.88m
5 Utility	5'3" x 9'4"	1.61 x 2.88m
6 Cloaks	6'1" x 3'6"	1.86 x 1.10m
7 Garage	19'1" x 16'5"	5.81 x 5.03m

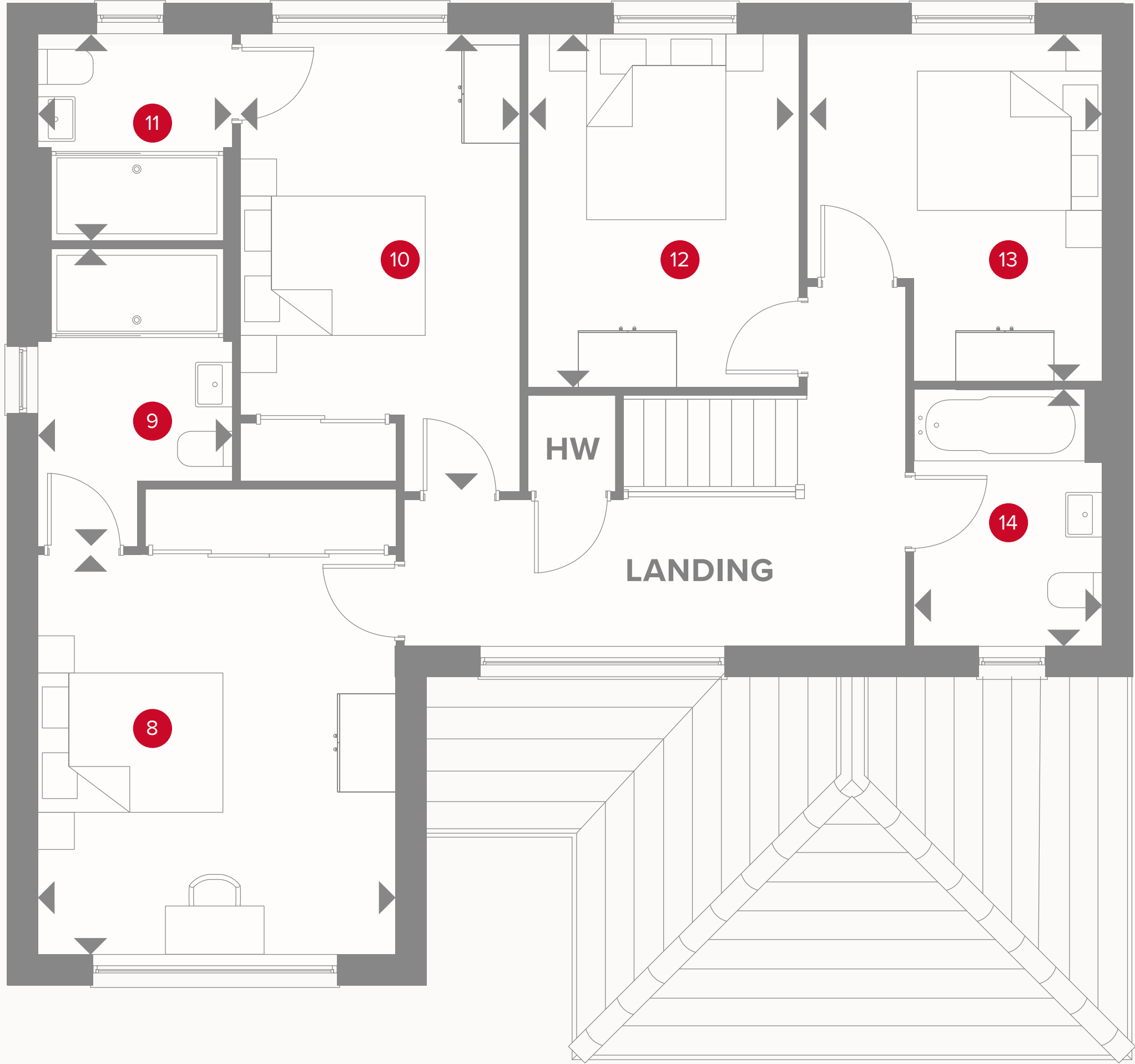


KEY

-  Hob
- OV** Oven
- FF** Fridge/freezer
- TD** Tumble dryer space

-  Dimensions start
- ST** Storage cupboard
- WM** Washing machine space
- DW** Dish washer space





THE LOSTOCK FIRST FLOOR

8	Bedroom 1	11'9" x 15'6"	3.63 x 4.74m
9	En-suite 1	6'1" x 7'7"	1.86 x 2.35m
10	Bedroom 2	9'3" x 14'9"	2.82 x 4.54m
11	En-suite 2	6'4" x 6'8"	1.95 x 2.08m
12	Bedroom 3	8'10" x 11'8"	2.74 x 3.60m
13	Bedroom 4	9'8" x 11'6"	3.00 x 3.53m
14	Bathroom	5'6" x 8'5"	1.71 x 2.60m



- KEY**
- ◀ Dimensions start
 - HW** Hot water storage
 - LH** Loft hatch

**CONSUMER
CODE FOR
HOME BUILDERS**

www.consumercode.co.uk

Customers should note this illustration is an example of the Lostock house type. All dimensions indicated are approximate and the furniture layout is for illustrative purposes only. Homes may be 'handed' (mirror image) versions of the illustrations, and may be detached, semi-detached or terraced. Materials used may differ from plot to plot including render and roof tile colours. Detailed plans and specifications are available for inspection for each plot at our Sales Centre during working hours and customers must check their individual specifications prior to making a reservation.