



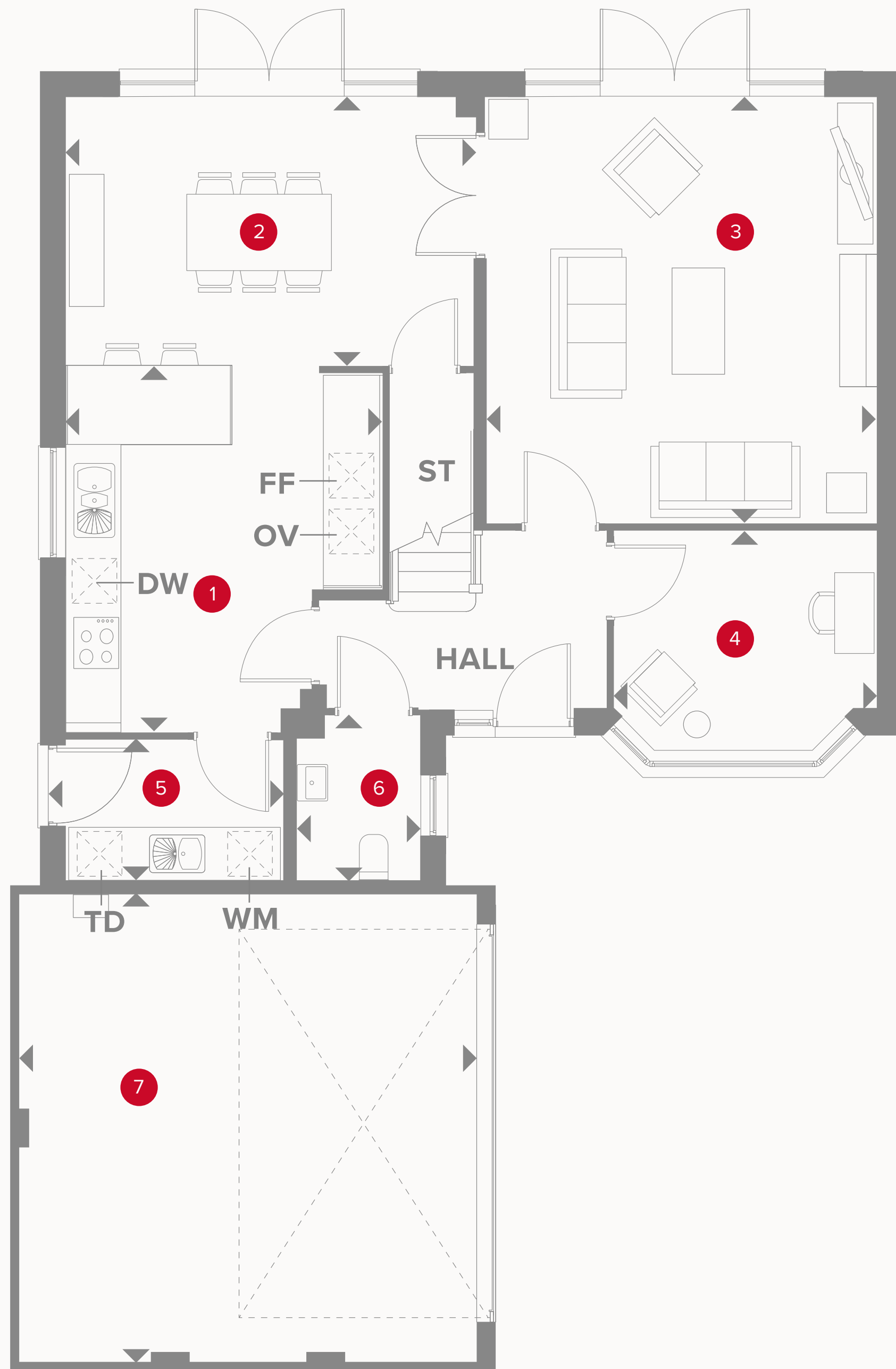
HERITAGE

- REDROW -

THE CANTERBURY LIFESTYLE

THREE BEDROOM HOME






THE CANTERBURY LIFESTYLE GROUND FLOOR

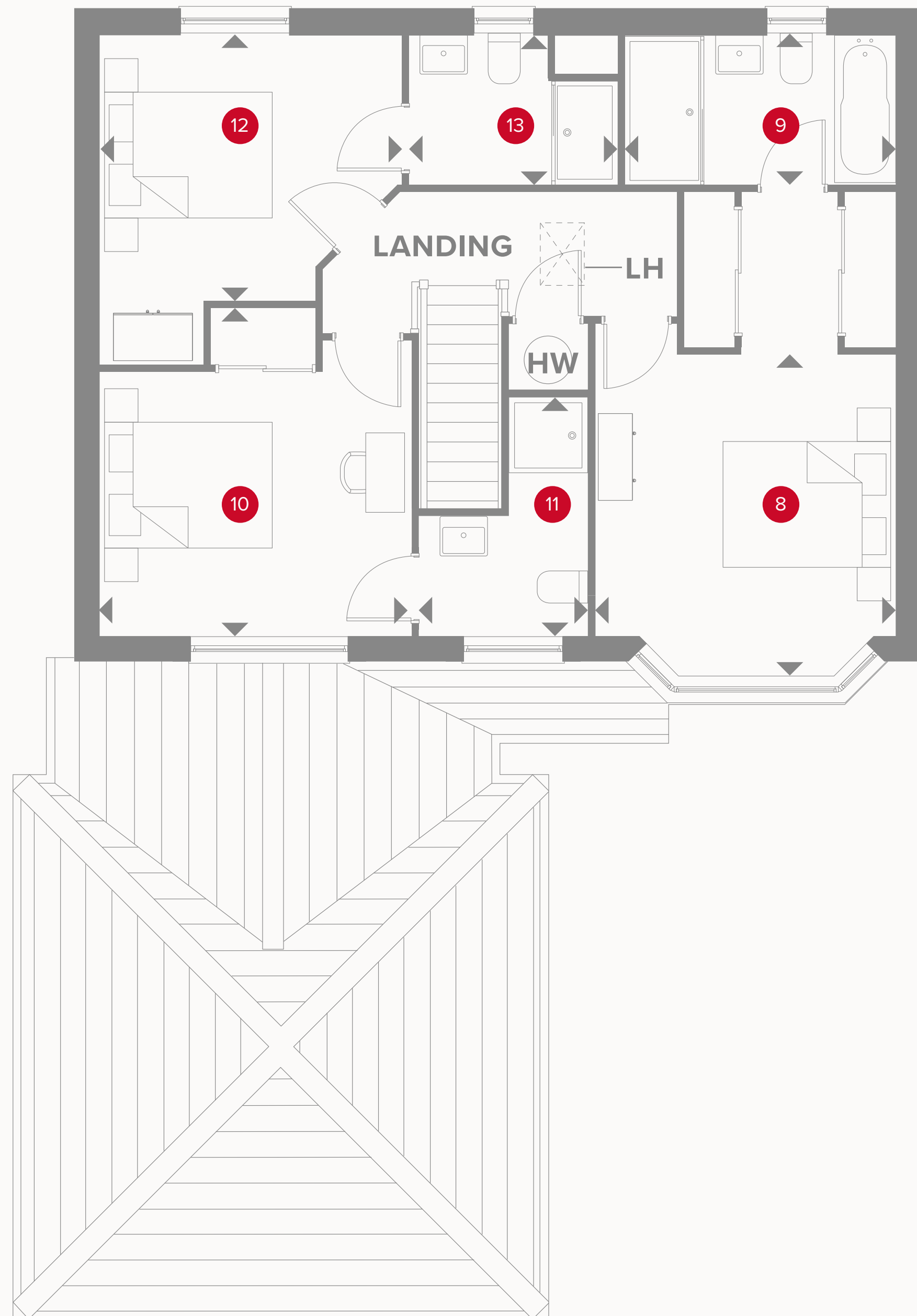
1	Kitchen	13'2" x 11'8"	4.02 x 3.56m
2	Dining	15'2" x 9'9"	4.62 x 2.98m
3	Lounge	15'9" x 14'4"	4.80 x 4.37m
4	Study	9'9" x 8'7"	2.96 x 2.61m
5	Utility	6'6" x 6'2"	1.99 x 1.87m
6	Cloaks	6'2" x 6'0"	1.87 x 1.82m
7	Garage	17'6" x 17'5"	5.34 x 5.30m



KEY

-  Hob
- OV** Oven
- FF** Fridge/freezer
- TD** Tumble dryer space

-  Dimensions start
- ST** Storage cupboard
- WM** Washing machine space
- DW** Dish washer space



THE CANTERBURY LIFESTYLE FIRST FLOOR

8	Bedroom 1	13'9" x 11'3"	4.18 x 3.43m
9	En-suite 1	10'2" x 5'10"	3.10 x 1.77m
10	Bedroom 2	11'9" x 11'6"	3.58 x 3.50m
11	En-suite 2	9'4" x 6'4"	2.85 x 1.94m
12	Bedroom 3	12'5" x 11'4"	3.78 x 3.45m
13	En-suite 3	7'10" x 5'10"	2.39 x 1.77m



KEY

- ◀ Dimensions start
- HW Hot water storage
- LH Loft hatch

**CONSUMER
CODE FOR
HOME BUILDERS**
www.consumercode.co.uk

Customers should note this illustration is an example of the Canterbury Lifestyle house type. All dimensions indicated are approximate and the furniture layout is for illustrative purposes only. Homes may be 'handed' (mirror image) versions of the illustrations, and may be detached, semi-detached or terraced. Materials used may differ from plot to plot including render and roof tile colours. Detailed plans and specifications are available for inspection for each plot at our Sales Centre during working hours and customers must check their individual specifications prior to making a reservation.