



INSPIRED

- REDROW -

THE WALFIELD

THREE BEDROOM HOME

 REDROW



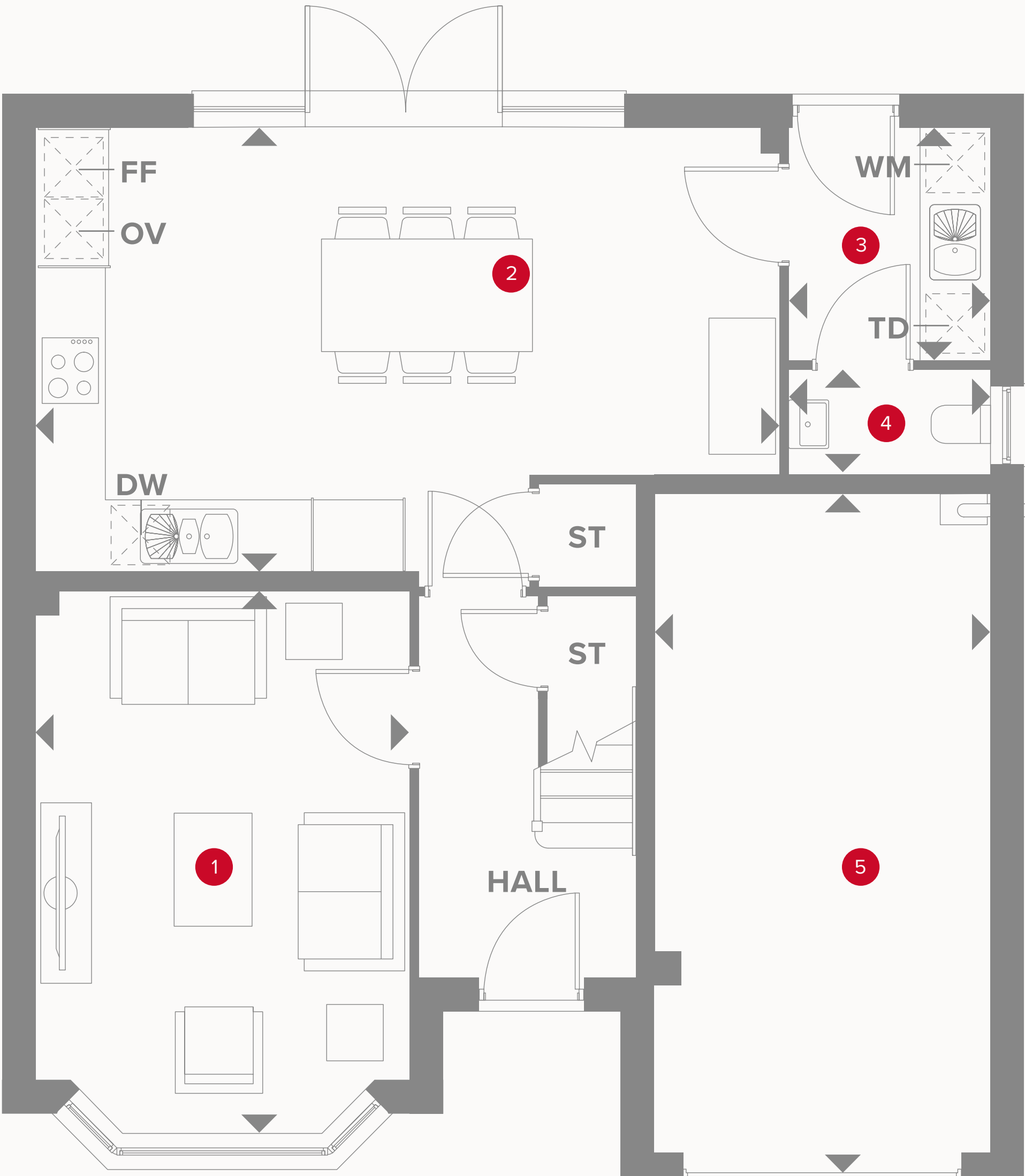
INSPIRED

- REDROW -

THE WALFIELD

THREE BEDROOM HOME





THE WALFIELD GROUND FLOOR

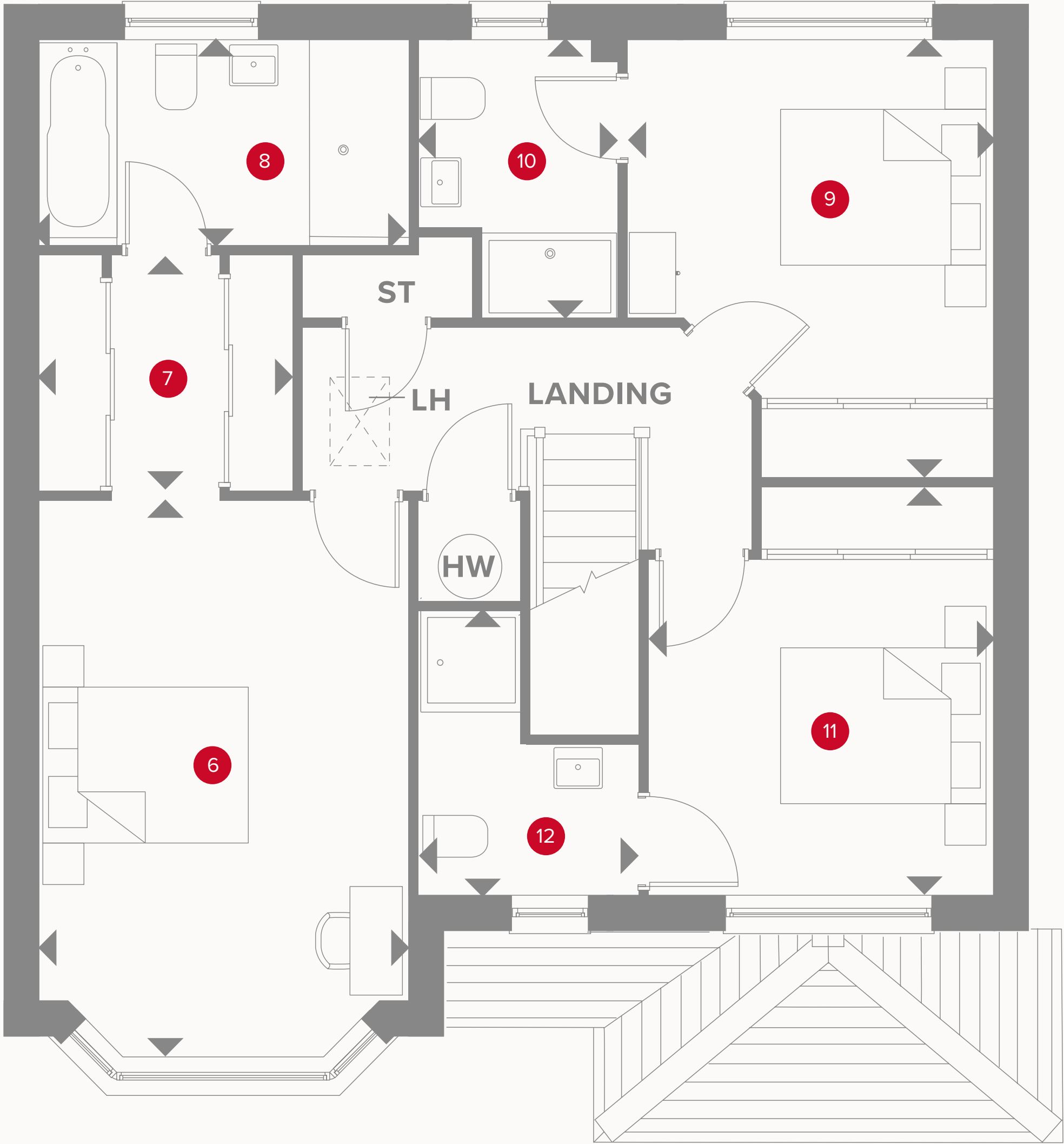
1	Lounge	15'9" x 10'9"	4.85 x 3.34 m
2	Kitchen/ Dining	21'7" x 12'7"	6.63 x 3.87 m
3	Utility	6'6" x 5'9"	2.01 x 1.81 m
4	Cloaks	5'9" x 3'2"	1.81 x 1.00 m
5	Garage	19'0" x 9'8"	5.81 x 2.99 m



KEY

- Hob
- OV** Oven
- FF** Fridge/freezer
- TD** Tumble dryer space

- Dimensions start
- ST** Storage cupboard
- WM** Washing machine space
- DW** Dish washer space



THE WALFIELD FIRST FLOOR

6	Bedroom 1	15'9" x 10'9"	4.87 x 3.32 m
7	Dressing	7'5" x 6'7"	2.31 x 2.05 m
8	En-suite 1	10'9" x 5'5"	3.32 x 1.70 m
9	Bedroom 2	12'7" x 10'8"	3.88 x 3.30 m
10	En-suite 2	8'0" x 5'7"	2.44 x 1.76 m
11	Bedroom 3	11'6" x 10'10"	3.56 x 3.08 m
12	En-suite 3	8'3" x 6'5"	2.54 x 1.98 m



KEY

- ◀ Dimensions start
- HW Hot water storage
- LH Loft hatch

CONSUMER
CODE FOR
HOME BUILDERS

www.consumercode.co.uk

Customers should note this illustration is an example of the Walfield house type. All dimensions indicated are approximate and the furniture layout is for illustrative purposes only. Homes may be 'handed' (mirror image) versions of the illustrations, and may be detached, semi-detached or terraced. Materials used may differ from plot to plot including render and roof tile colours. Detailed plans and specifications are available for inspection for each plot at our Sales Centre during working hours and customers must check their individual specifications prior to making a reservation. Some images shown include upgrade items which are not included as standard with the housetype.