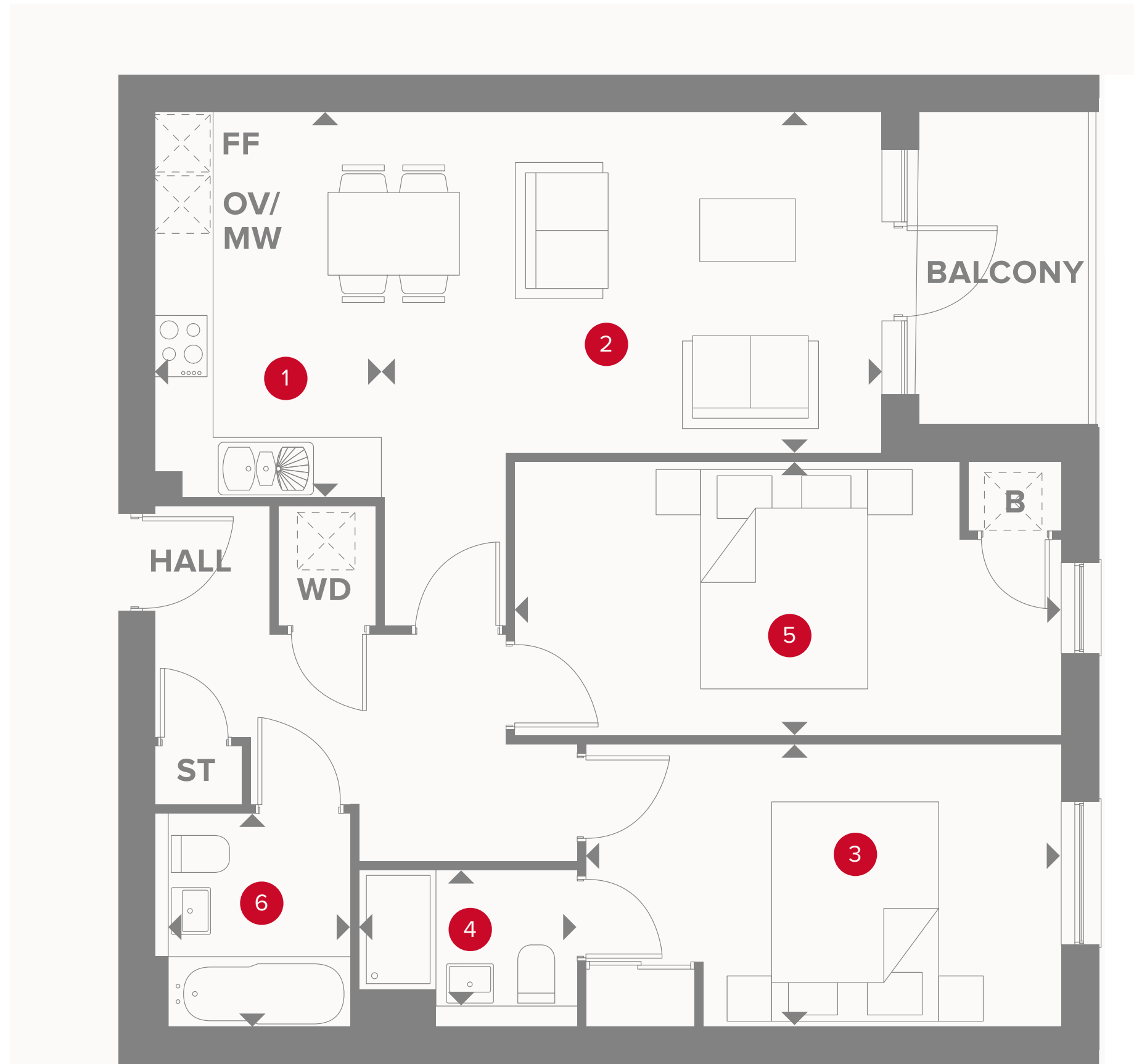


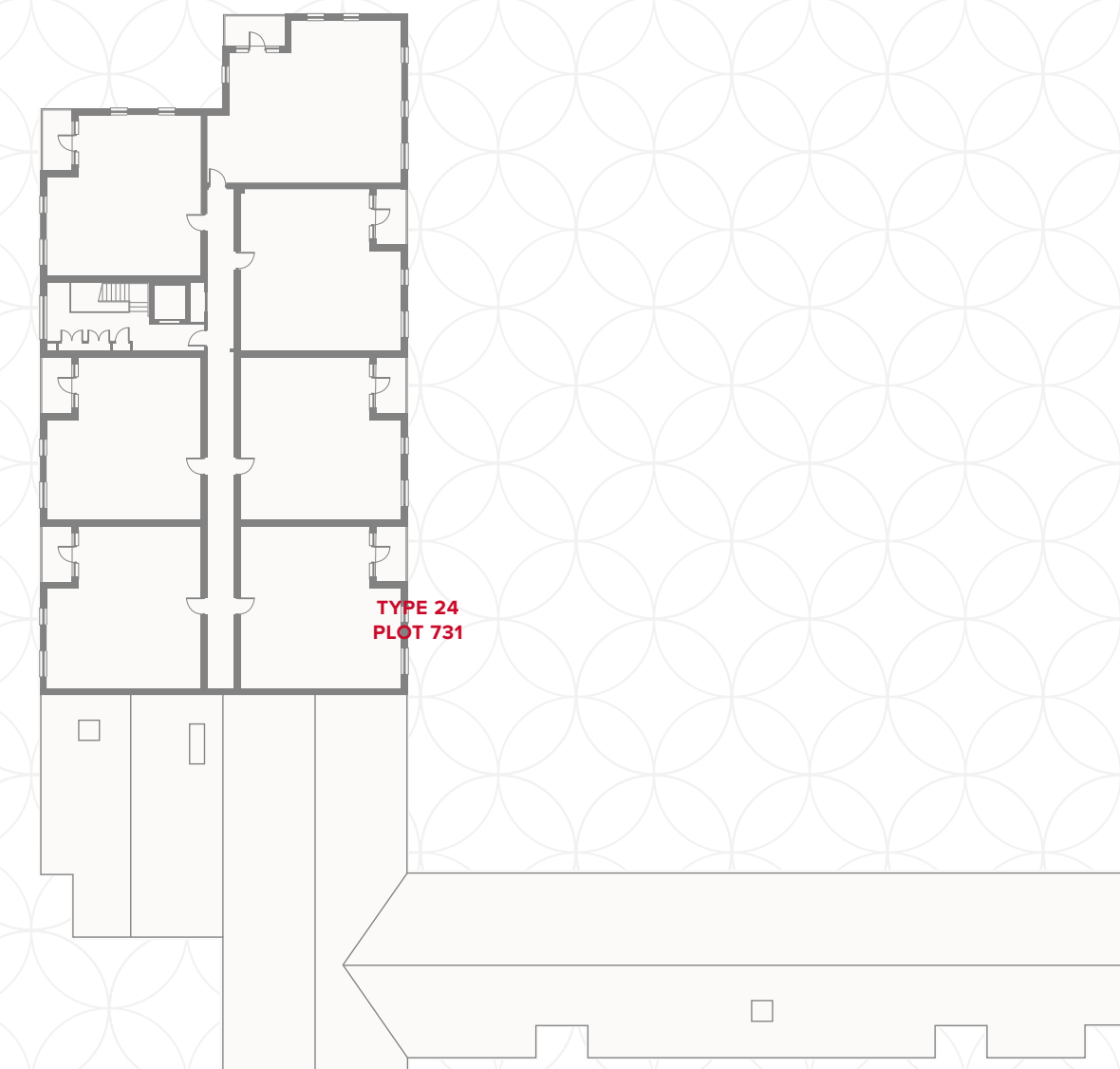
# APARTMENT TYPE 24

PLOT 731



# PLAZA COURT FOURTH FLOOR

1	Kitchen	12'8" x 7'6"	3.85 x 2.29 m
2	Lounge/Dining	16'4" x 11'2"	4.98 x 3.39 m
3	Bedroom 1	15'7" x 9'3"	4.74 x 2.82 m
4	En-Suite	7'2" x 4'6"	2.18 x 1.36 m
5	Bedroom 2	17'11" x 9'	5.45 x 2.75 m
6	Bathroom	7'1" x 5'11"	2.16 x 1.8 m



## KEY

	Hob		Dimensions start
<b>OV/MV</b>	Oven & microwave	<b>B</b>	Boiler
<b>FF</b>	Fridge/freezer	<b>WD</b>	Washer/dryer

Customers should note this illustration is an example of the Plaza Court apartments. All dimensions indicated are approximate and the furniture layout is for illustrative purposes only. Materials used may differ from plot to plot including render and roof tile colours. Detailed plans and specifications are available for inspection for each plot at our Sales Centre during working hours and customers must check their individual specifications prior to making a reservation. Please see Sales Consultant for further details.