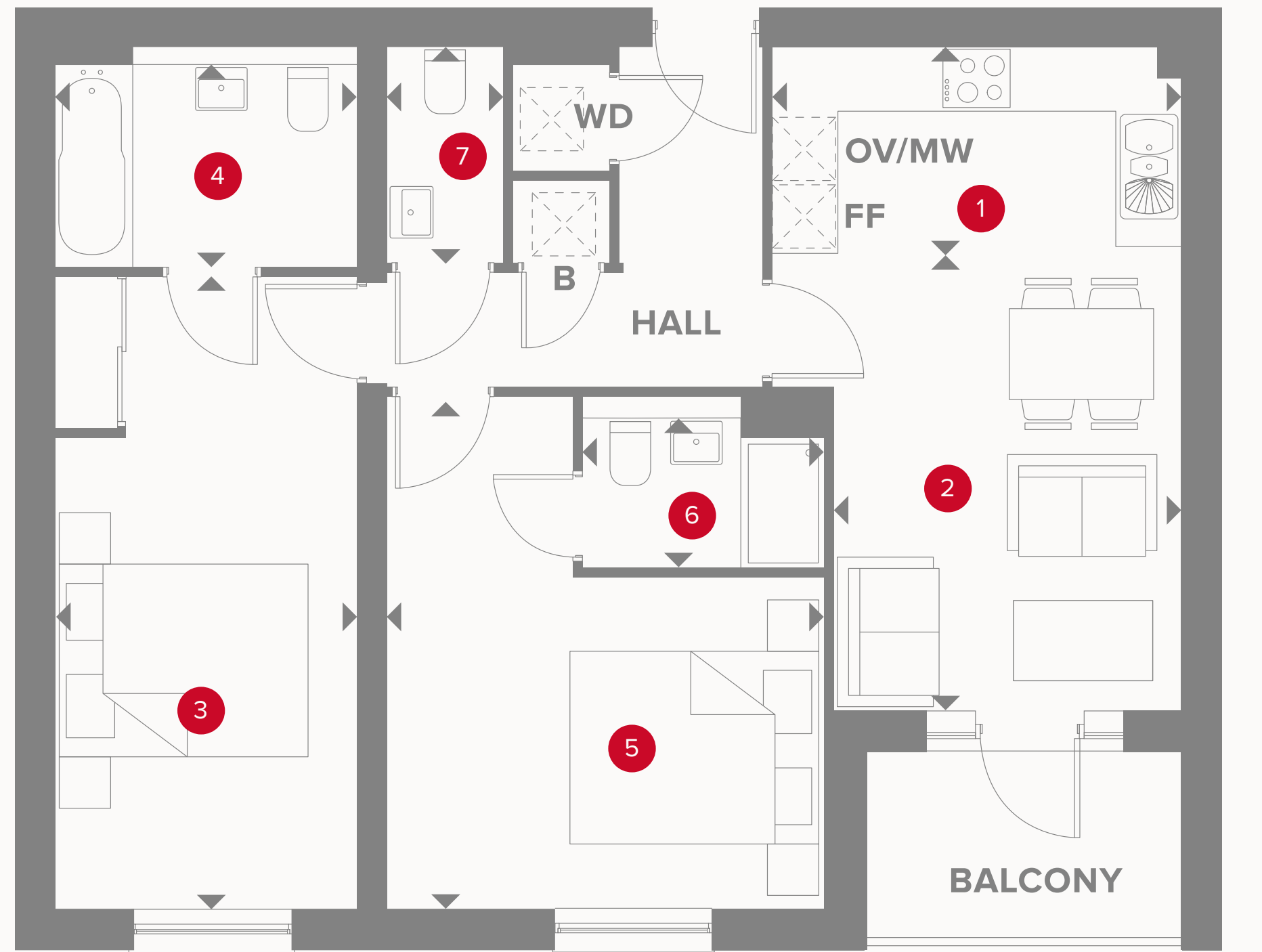


APARTMENT TYPE 16

PLOT 712



PLAZA COURT THIRD FLOOR

1	Kitchen	12'3" x 6'	3.73 x 1.82 m
2	Lounge/Dining	13'10" x 10'5"	4.22 x 3.17 m
3	Bedroom 1	18'10" x 9'	5.75 x 2.75 m
4	En-Suite 1	9' x 5'11"	2.75 x 1.8 m
5	Bedroom 2	15'3" x 9'10"	4.65 x 3.97 m
6	En-Suite 2	7'2" x 4'6"	2.18 x 1.36 m
7	Cloaks	6'6" x 3'6"	1.98 x 1.06 m



KEY

	Hob		Dimensions start
OV/MV	Oven & microwave	B	Boiler
FF	Fridge/freezer	WD	Washer/dryer

Customers should note this illustration is an example of the Plaza Court apartments. All dimensions indicated are approximate and the furniture layout is for illustrative purposes only. Materials used may differ from plot to plot including render and roof tile colours. Detailed plans and specifications are available for inspection for each plot at our Sales Centre during working hours and customers must check their individual specifications prior to making a reservation. Please see Sales Consultant for further details.