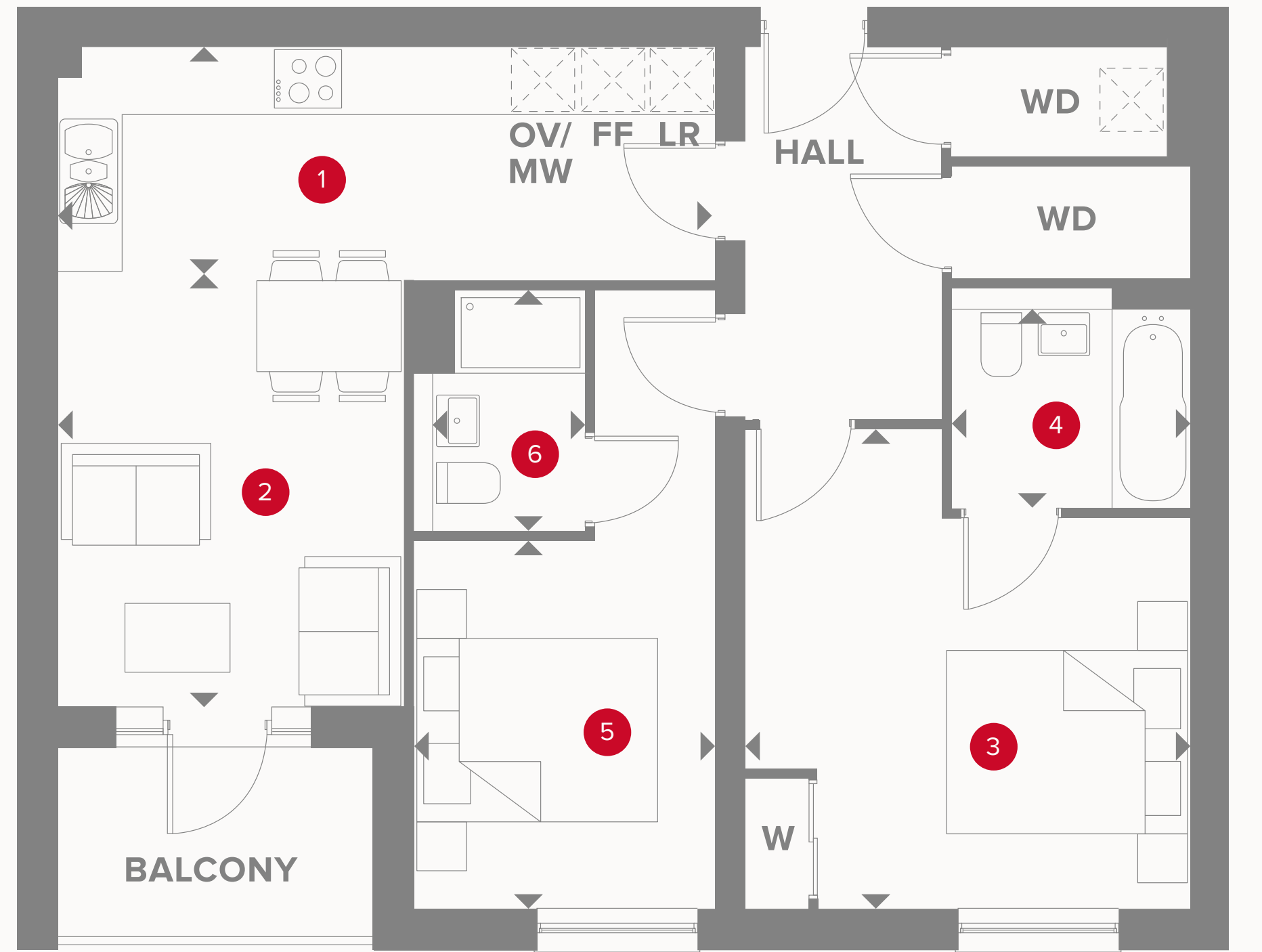


# APARTMENT TYPE 17

PLOT 713



# PLAZA COURT THIRD FLOOR

1	Kitchen	19'8" x 6'8"	5.99 x 2.04 m
2	Lounge/Dining	13'2" x 10'5"	4 x 3.17 m
3	Bedroom 1	14'4" x 13'3"	4.36 x 4.05 m
4	En-Suite 1	7'2" x 4'6"	2.18 x 1.36 m
5	Bedroom 2	11' x 9'	3.35 x 2.75 m
6	En-Suite 2	7'1" x 5'11"	2.16 x 1.8 m



## KEY

	Hob		Dimensions start	<b>ST</b>	Store
<b>OV/MV</b>	Oven & microwave	<b>WD</b>	Washer/dryer	<b>W</b>	Wardrobe
<b>FF</b>	Fridge/freezer	<b>LR</b>	Larder		

Customers should note this illustration is an example of the Plaza Court apartments. All dimensions indicated are approximate and the furniture layout is for illustrative purposes only. Materials used may differ from plot to plot including render and roof tile colours. Detailed plans and specifications are available for inspection for each plot at our Sales Centre during working hours and customers must check their individual specifications prior to making a reservation. Please see Sales Consultant for further details.