



TAILORED

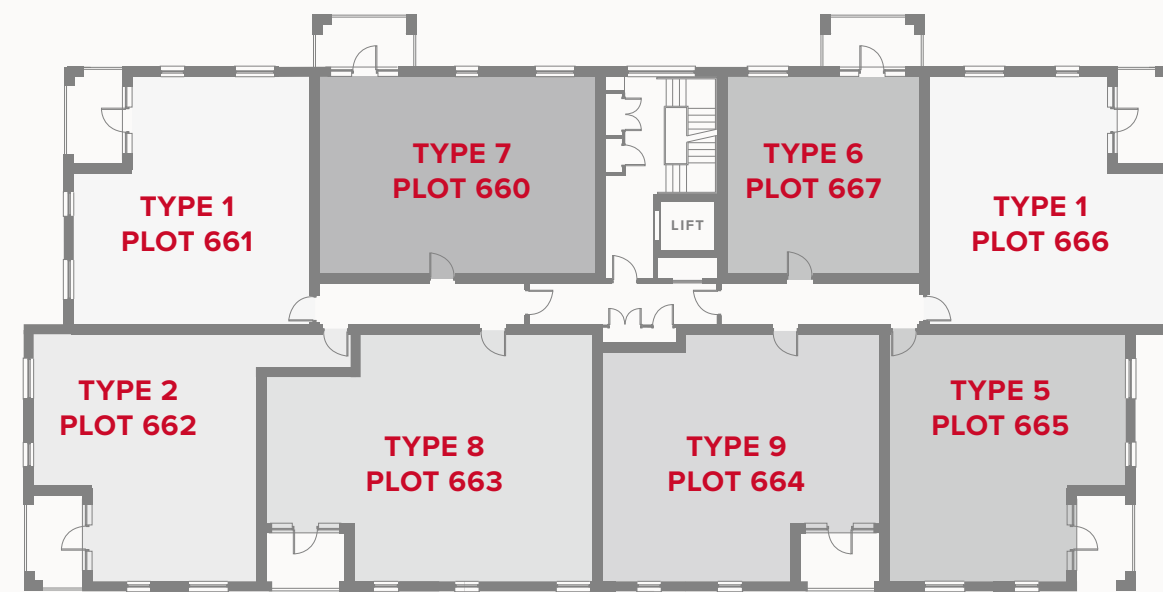
- REDROW -

PLAZA CENTRAL WESTGATE HOUSE

ONE & TWO BEDROOM APARTMENTS



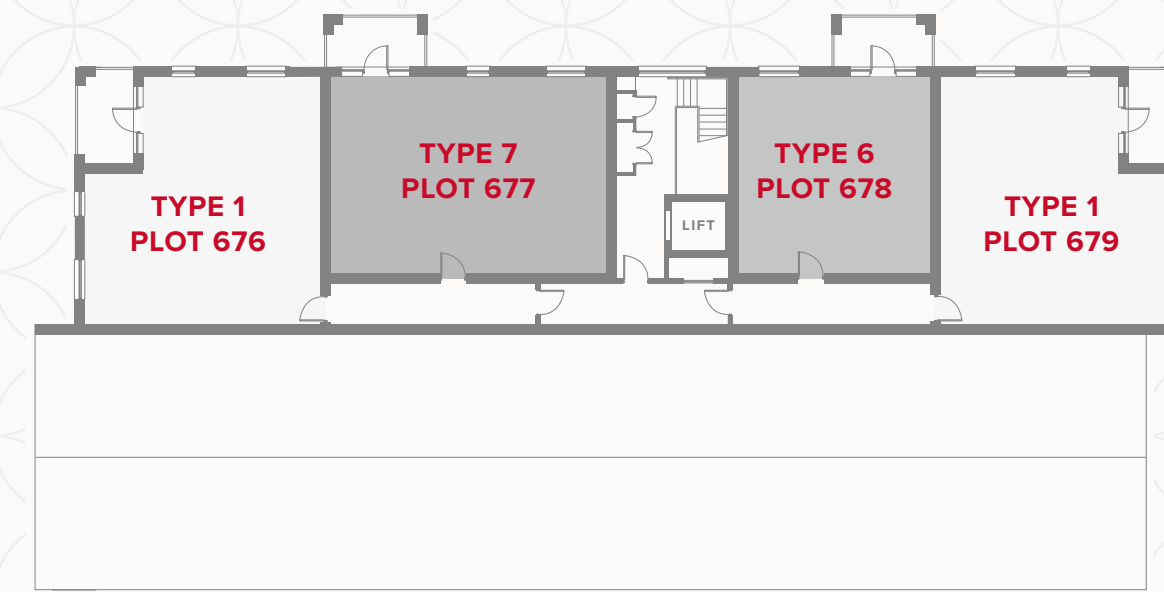
FIRST FLOOR



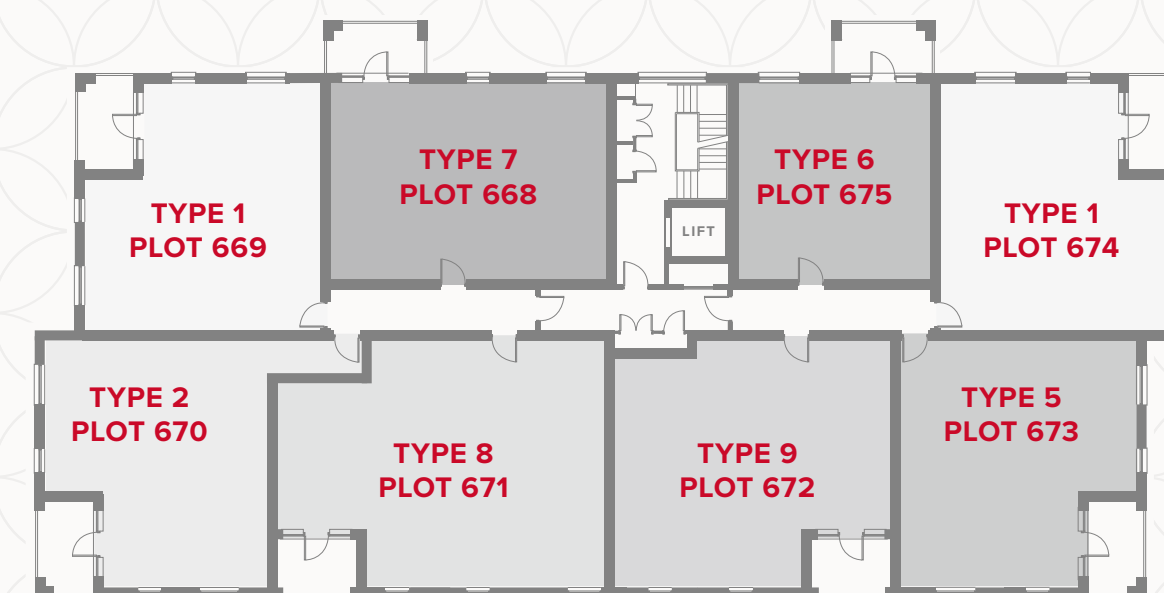
GROUND FLOOR



THIRD FLOOR

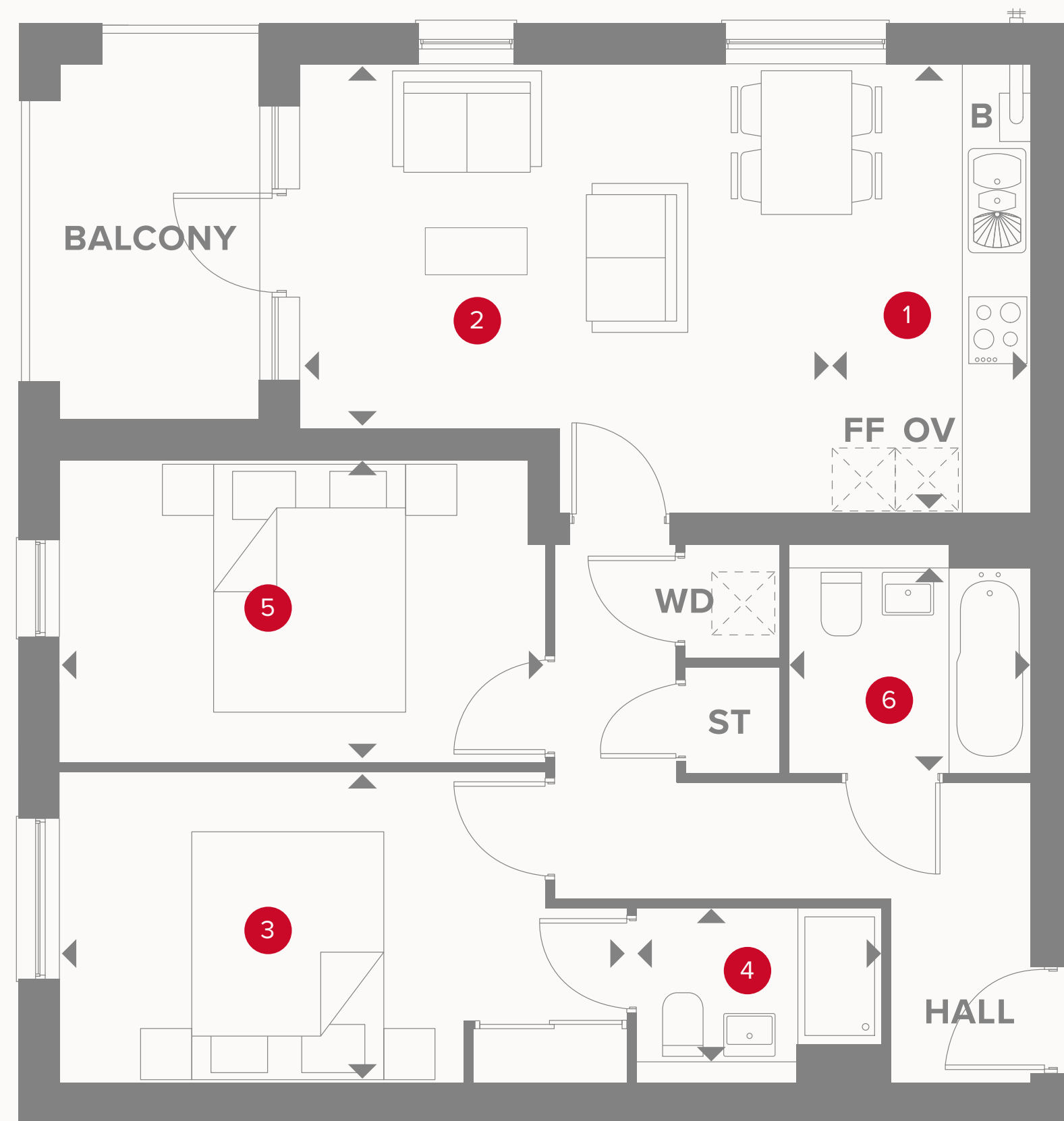


SECOND FLOOR



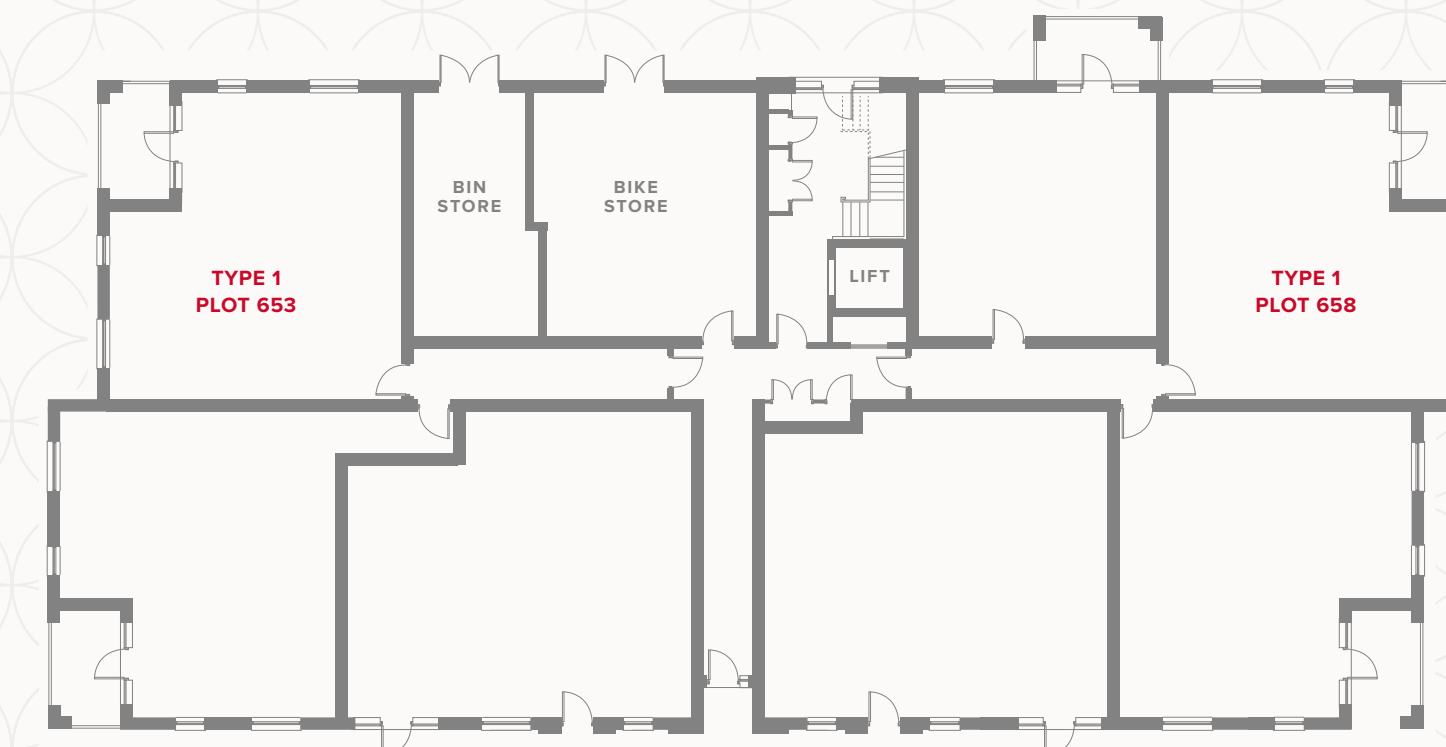
APARTMENT TYPE 1

PLOT 653 & 658 (HANDED)



PLAZA CENTRAL WESTGATE HOUSE GROUND FLOOR

1	Kitchen	13' x 6'1"	3.97 x 1.87 m
2	Lounge/Dining	15'1" x 10'7"	4.6 x 3.22 m
3	Bedroom 1	16'5" x 9'1"	5.01 x 2.76 m
4	En-Suite	7'2" x 4'5"	2.18 x 1.34 m
5	Bedroom 2	14'2" x 8'10"	4.32 x 2.69 m
6	Bathroom	7'1" x 5'11"	2.16 x 1.8 m



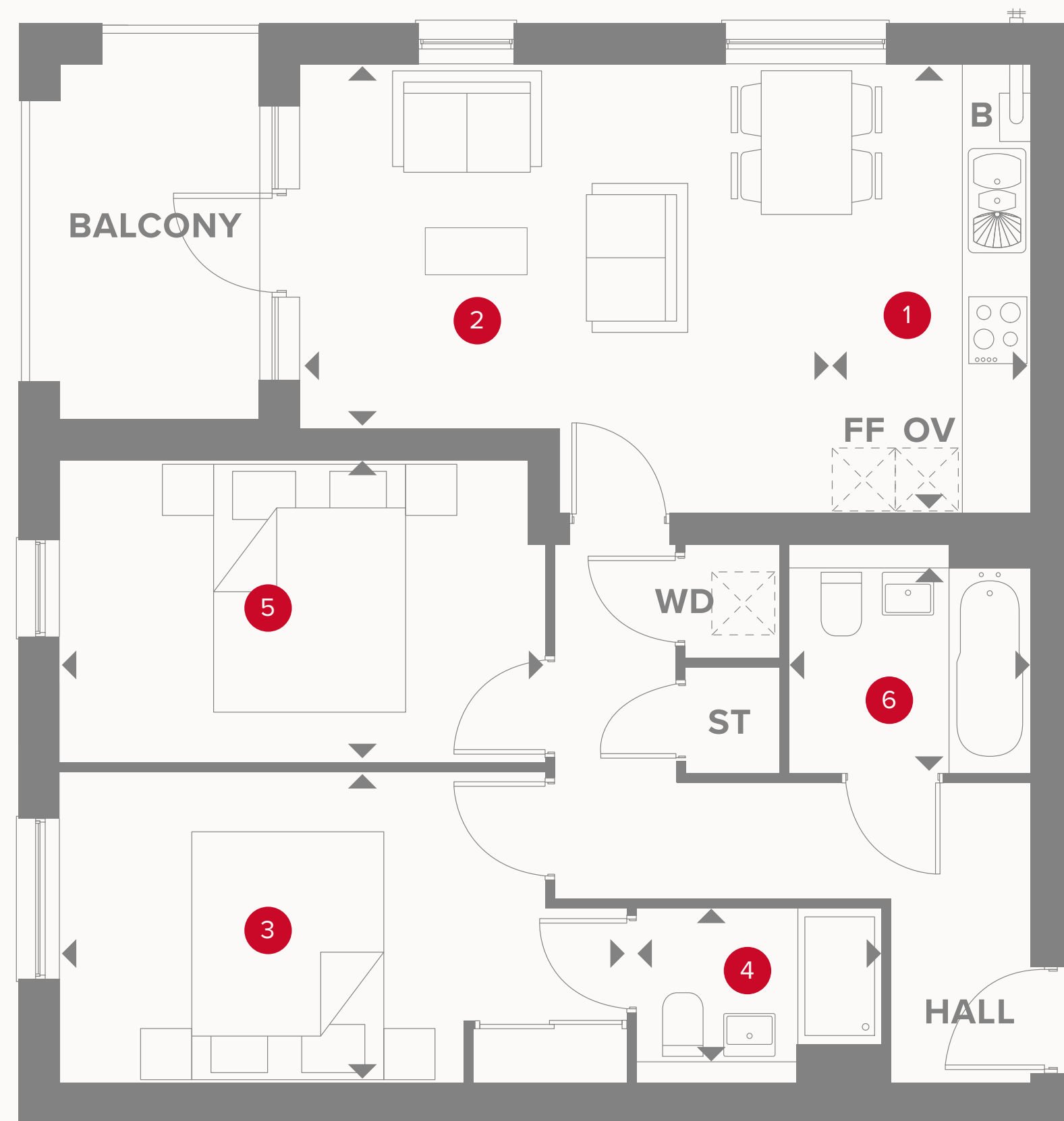
KEY

	Hob		Dimensions start
OV	Oven	ST	Storage cupboard
FF	Fridge/freezer	WD	Washer/Dryer
B	Boiler		

Customers should note this illustration is an example of the Plaza Central Westgate House apartments. All dimensions indicated are approximate and the furniture layout is for illustrative purposes only. Materials used may differ from plot to plot including render and roof tile colours. Detailed plans and specifications are available for inspection for each plot at our Sales Centre during working hours and customers must check their individual specifications prior to making a reservation. Please see Sales Consultant for further details.

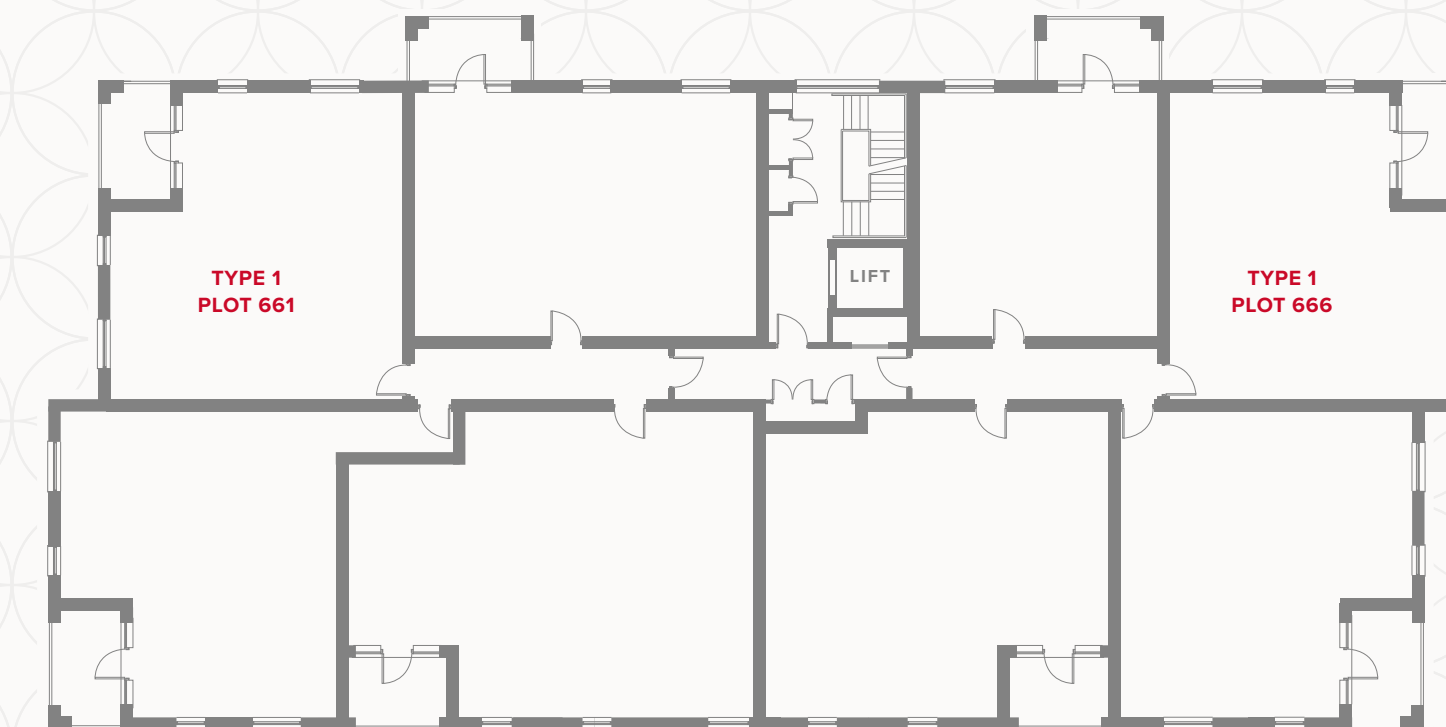
APARTMENT TYPE 1

PLOT 661 & 666 (HANDED)



PLAZA CENTRAL WESTGATE HOUSE FIRST FLOOR

1	Kitchen	13' x 6'1"	3.97 x 1.87 m
2	Lounge/Dining	15'1" x 10'7"	4.6 x 3.22 m
3	Bedroom 1	16'5" x 9'1"	5.01 x 2.76 m
4	En-Suite	7'2" x 4'5"	2.18 x 1.34 m
5	Bedroom 2	14'2" x 8'10"	4.32 x 2.67 m
6	Bathroom	7'1" x 5'11"	2.16 x 1.8 m



KEY

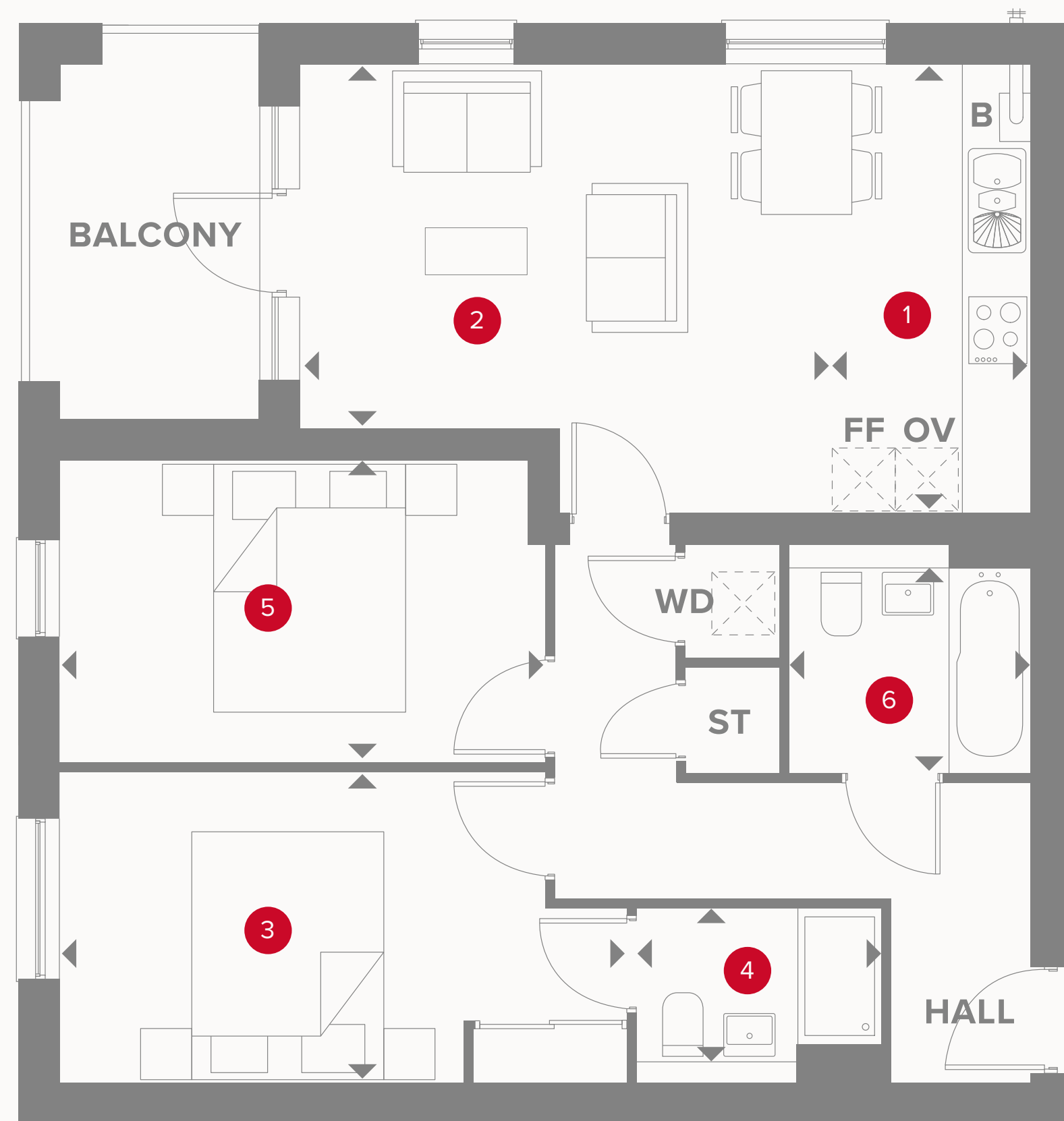
- Hob
- OV** Oven
- FF** Fridge/freezer
- B** Boiler

- Dimensions start
- ST** Storage cupboard
- WD** Washer/Dryer

Customers should note this illustration is an example of the Plaza Central Westgate House apartments. All dimensions indicated are approximate and the furniture layout is for illustrative purposes only. Materials used may differ from plot to plot including render and roof tile colours. Detailed plans and specifications are available for inspection for each plot at our Sales Centre during working hours and customers must check their individual specifications prior to making a reservation. Please see Sales Consultant for further details.

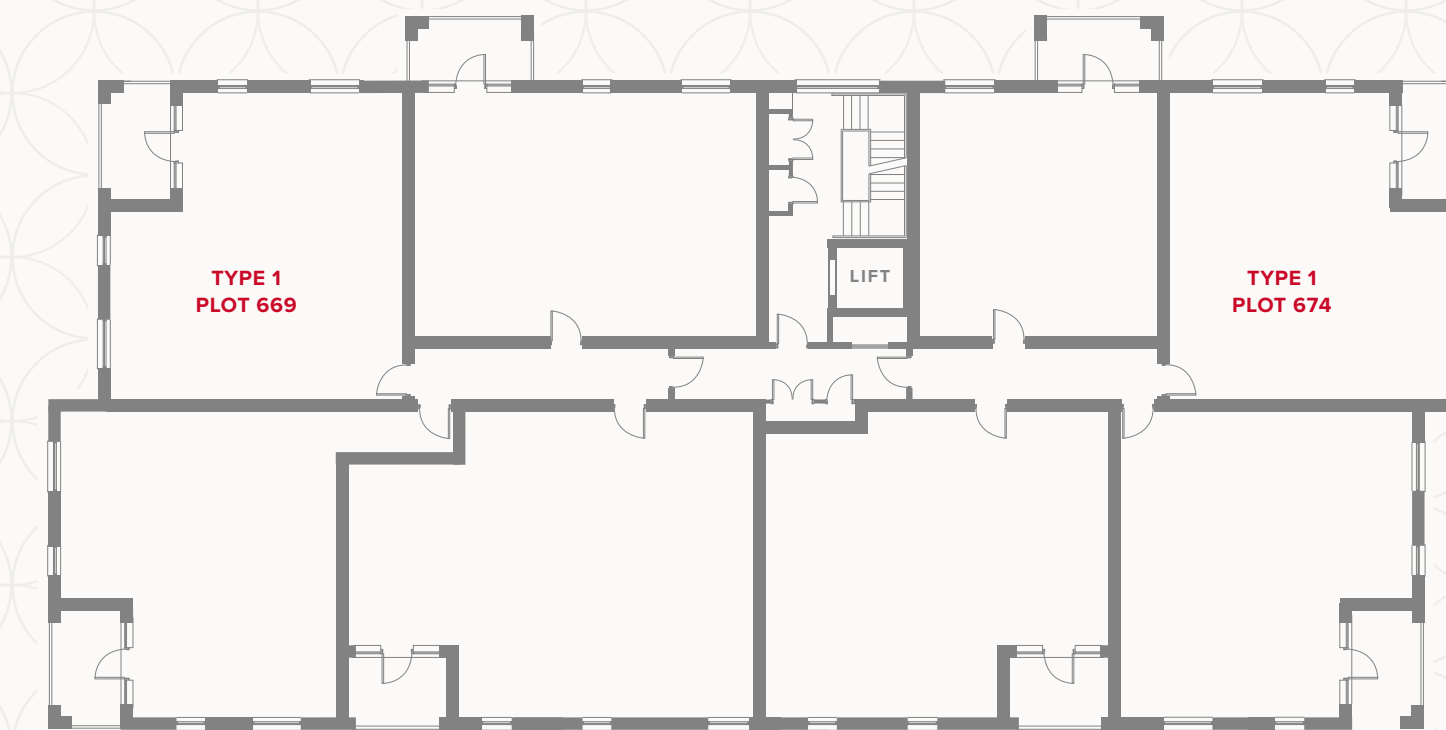
APARTMENT TYPE 1

PLOT 669 & 674 (HANDED)



PLAZA CENTRAL WESTGATE HOUSE SECOND FLOOR

1	Kitchen	13' x 6'1"	3.97 x 1.87 m
2	Lounge/Dining	15'1" x 10'7"	4.6 x 3.22 m
3	Bedroom 1	16'5" x 9'1"	5.01 x 2.76 m
4	En-Suite	7'2" x 4'5"	2.18 x 1.34 m
5	Bedroom 2	14'2" x 8'10"	4.32 x 2.67 m
6	Bathroom	7'1" x 5'11"	2.16 x 1.8 m



Customers should note this illustration is an example of the Plaza Central Westgate House apartments. All dimensions indicated are approximate and the furniture layout is for illustrative purposes only. Materials used may differ from plot to plot including render and roof tile colours. Detailed plans and specifications are available for inspection for each plot at our Sales Centre during working hours and customers must check their individual specifications prior to making a reservation. Please see Sales Consultant for further details.

KEY

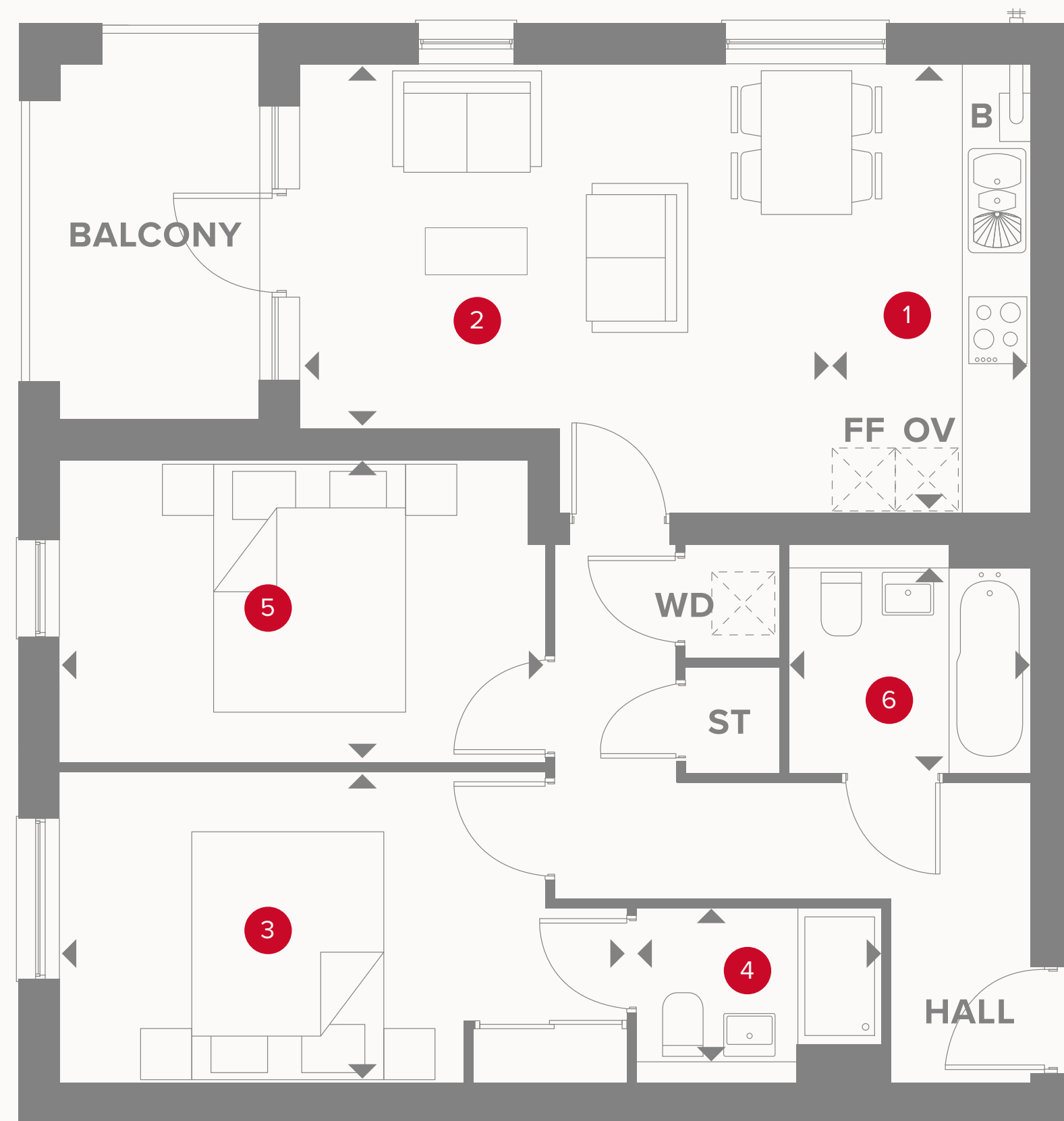
- Hob
- OV** Oven
- FF** Fridge/freezer
- B** Boiler

- Dimensions start
- ST** Storage cupboard
- WD** Washer/Dryer

**CONSUMER
CODE FOR
HOME BUILDERS**
www.consumercode.co.uk

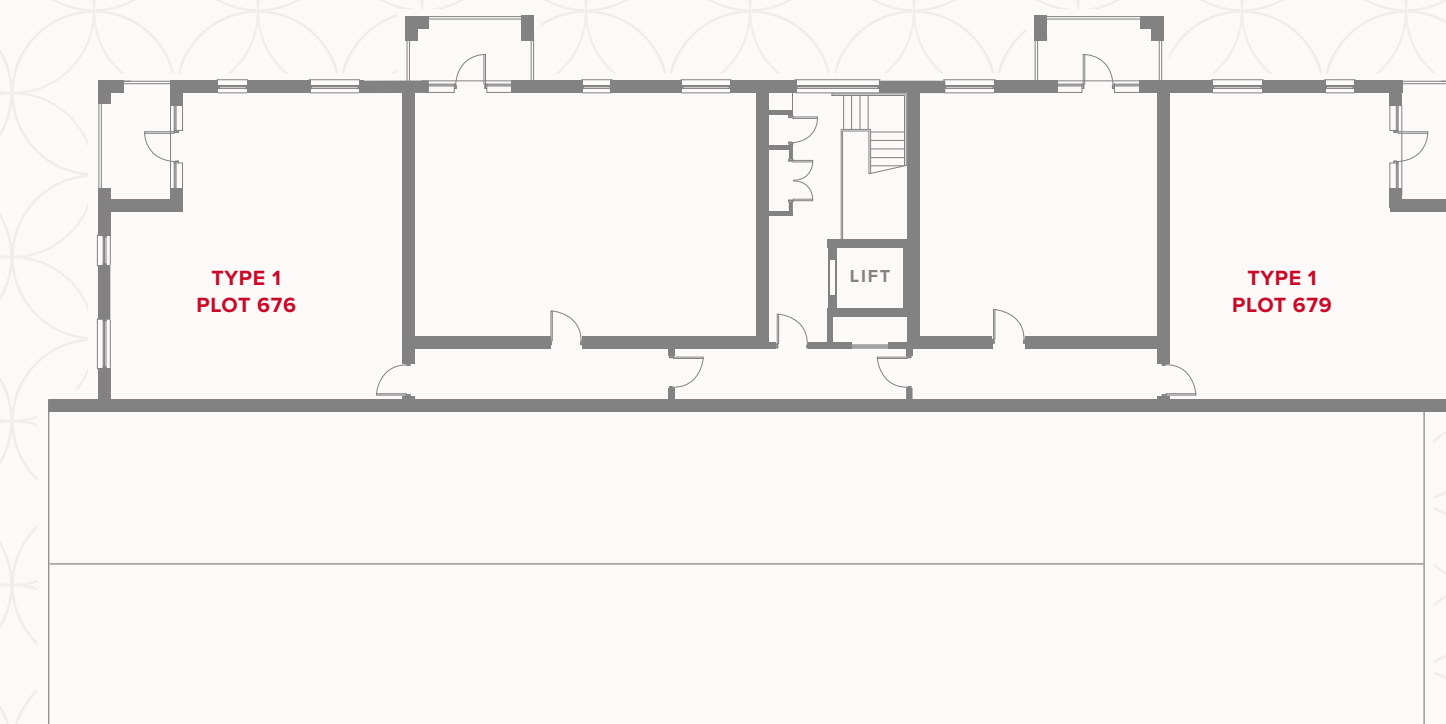
APARTMENT TYPE 1

PLOT 676 & 679 (HANDED)



PLAZA CENTRAL WESTGATE HOUSE THIRD FLOOR

1	Kitchen	13' x 6'1"	3.97 x 1.87 m
2	Lounge/Dining	15'1" x 10'7"	4.6 x 3.22 m
3	Bedroom 1	16'5" x 9'1"	5.01 x 2.76 m
4	En-Suite	7'2" x 4'5"	2.18 x 1.34 m
5	Bedroom 2	14'2" x 8'10"	4.32 x 2.69 m
6	Bathroom	7'1" x 5'11"	2.16 x 1.8 m



Customers should note this illustration is an example of the Plaza Central Westgate House apartments. All dimensions indicated are approximate and the furniture layout is for illustrative purposes only. Materials used may differ from plot to plot including render and roof tile colours. Detailed plans and specifications are available for inspection for each plot at our Sales Centre during working hours and customers must check their individual specifications prior to making a reservation. Please see Sales Consultant for further details.

KEY

- Hob
- Oven
- Fridge/freezer
- Boiler

- Dimensions start
- Storage cupboard
- Washer/Dryer

**CONSUMER
CODE FOR
HOME BUILDERS**
www.consumercode.co.uk