



**TAILORED**

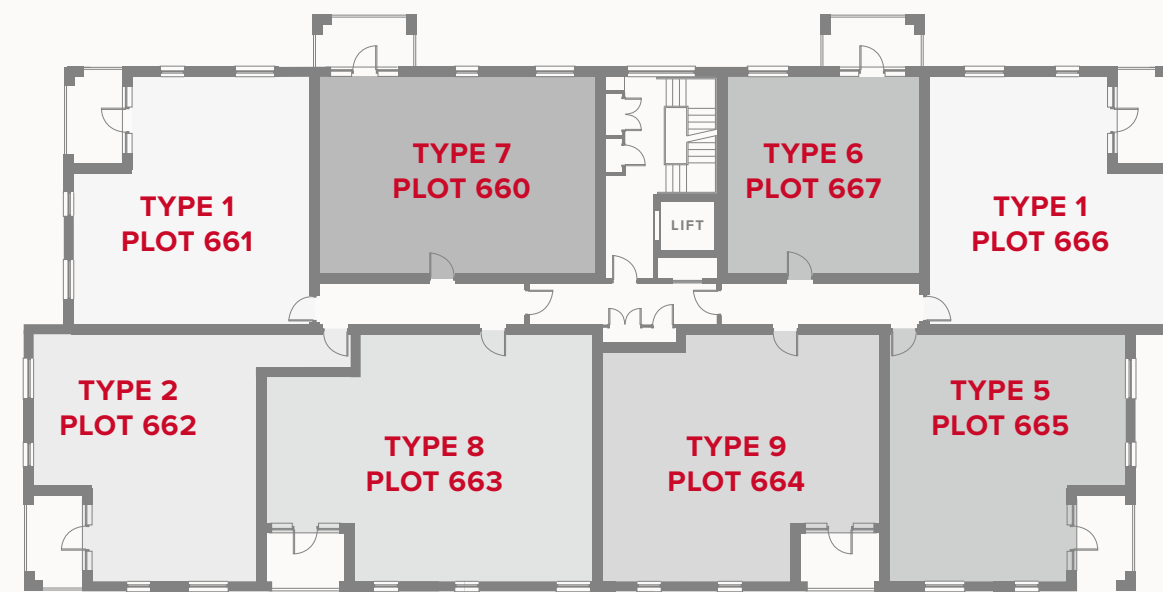
- REDROW -

# PLAZA CENTRAL WESTGATE HOUSE

ONE & TWO BEDROOM APARTMENTS



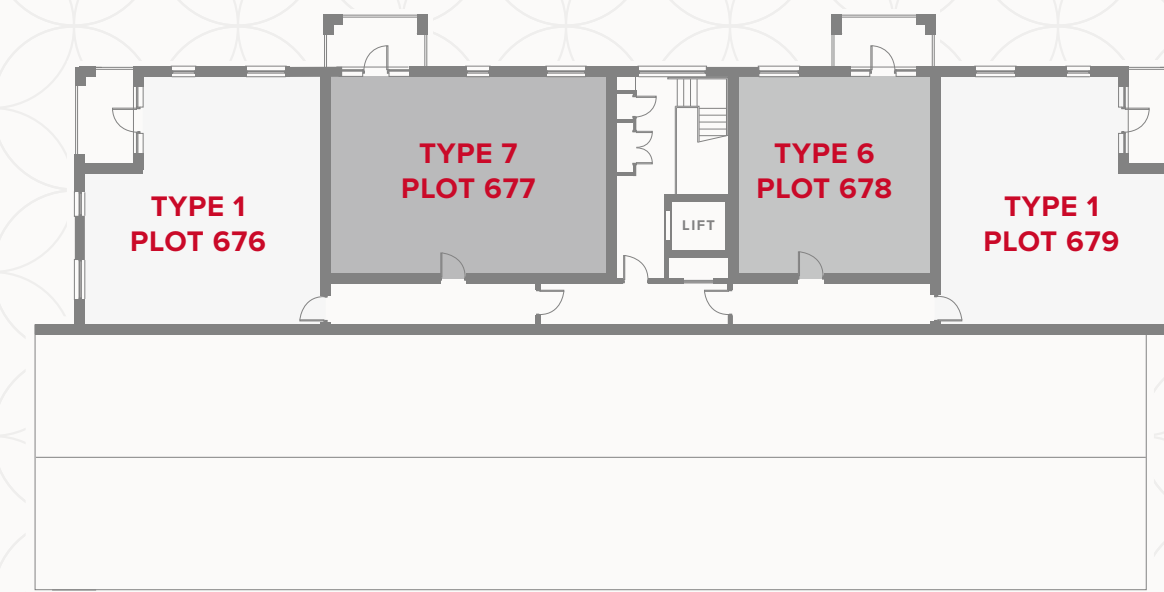
## FIRST FLOOR



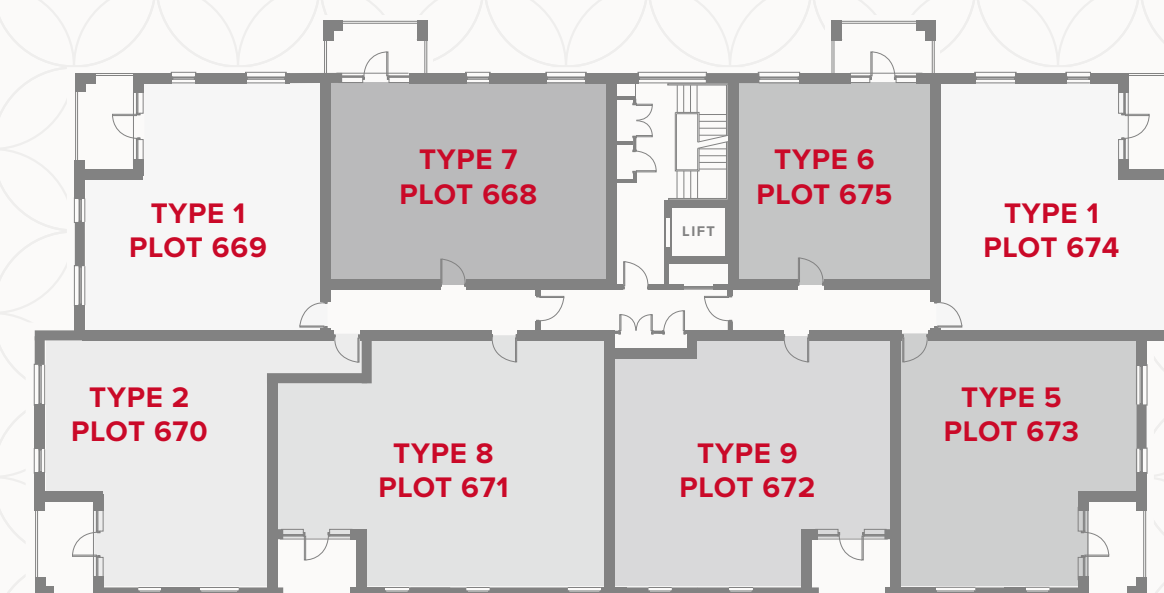
## GROUND FLOOR



## THIRD FLOOR



## SECOND FLOOR



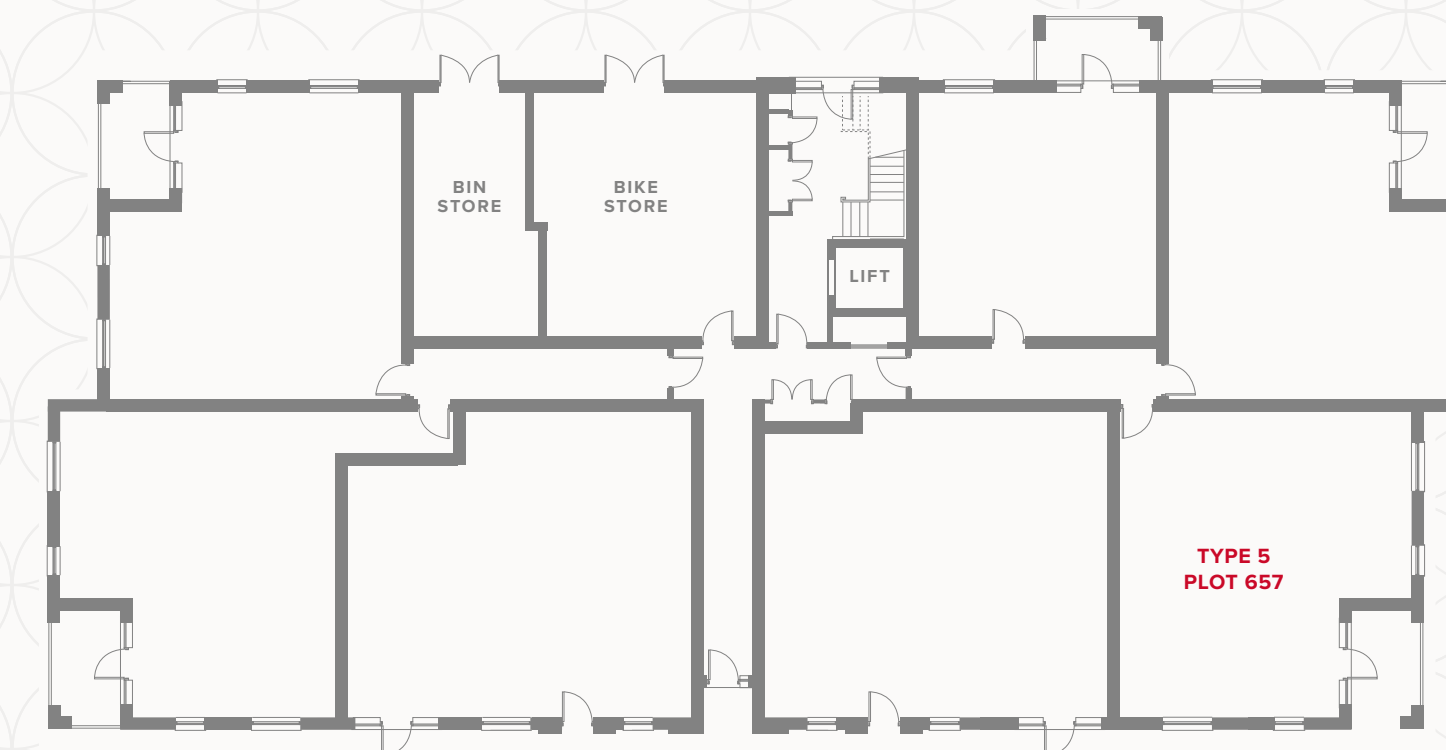
# APARTMENT TYPE 5

PLOT 657



# PLAZA CENTRAL WESTGATE HOUSE GROUND FLOOR

1	Kitchen	13' x 6'1"	3.95 x 1.87 m
2	Lounge/Dining	15'1" x 10'7"	4.6 x 3.22 m
3	Bedroom 1	16'5" x 9'1"	5.01 x 2.76 m
4	En-Suite	7'2" x 4'6"	2.18 x 1.37 m
5	Bedroom 2	14'2" x 8'9"	4.32 x 2.66 m
6	Bathroom	7'1" x 5'11"	2.16 x 1.8 m



## KEY

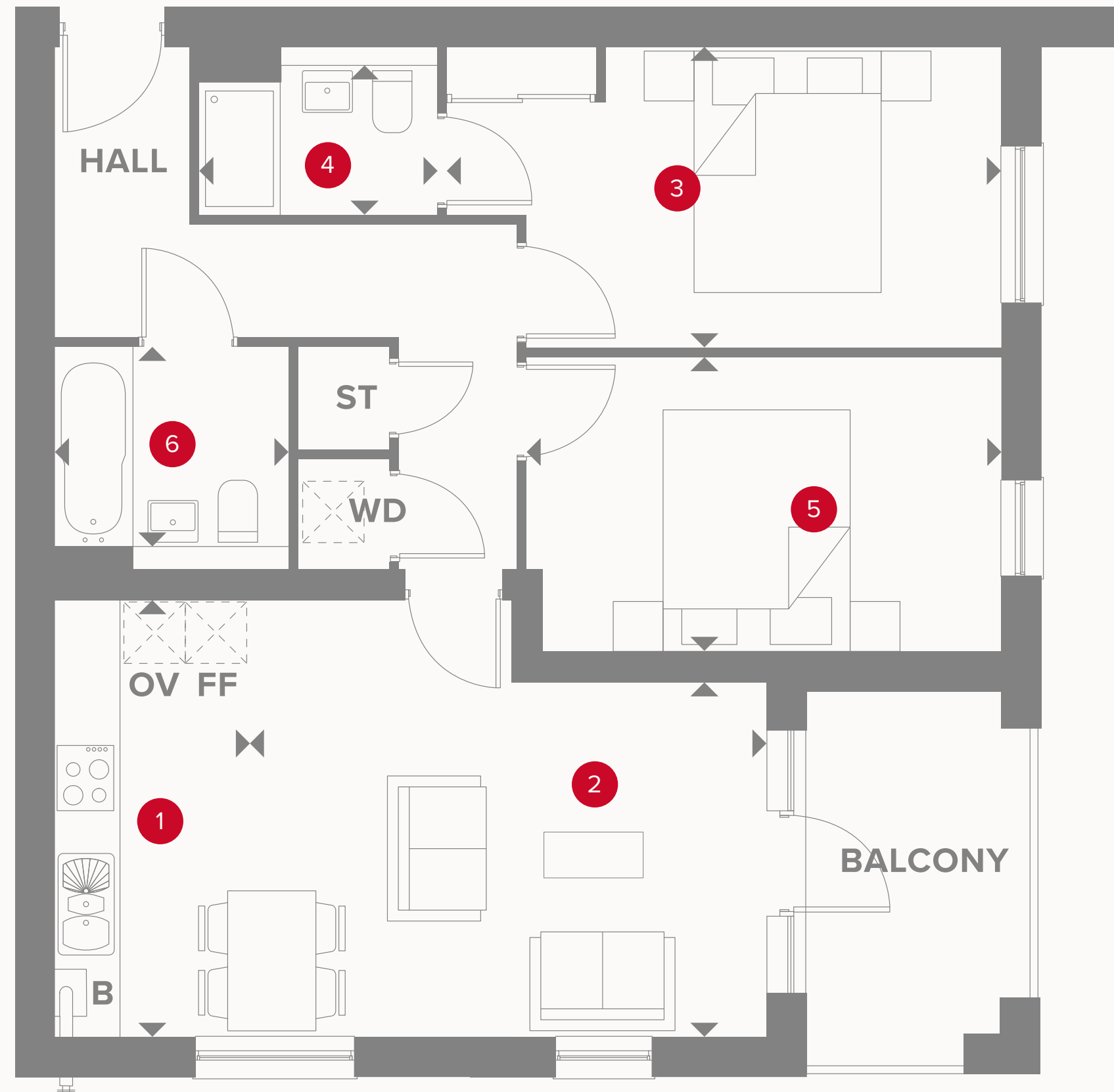
- Hob
- OV** Oven
- FF** Fridge/freezer
- B** Boiler

- Dimensions start
- ST** Storage cupboard
- WD** Washer/Dryer

Customers should note this illustration is an example of the Plaza Central Westgate House apartments. All dimensions indicated are approximate and the furniture layout is for illustrative purposes only. Materials used may differ from plot to plot including render and roof tile colours. Detailed plans and specifications are available for inspection for each plot at our Sales Centre during working hours and customers must check their individual specifications prior to making a reservation. Please see Sales Consultant for further details.

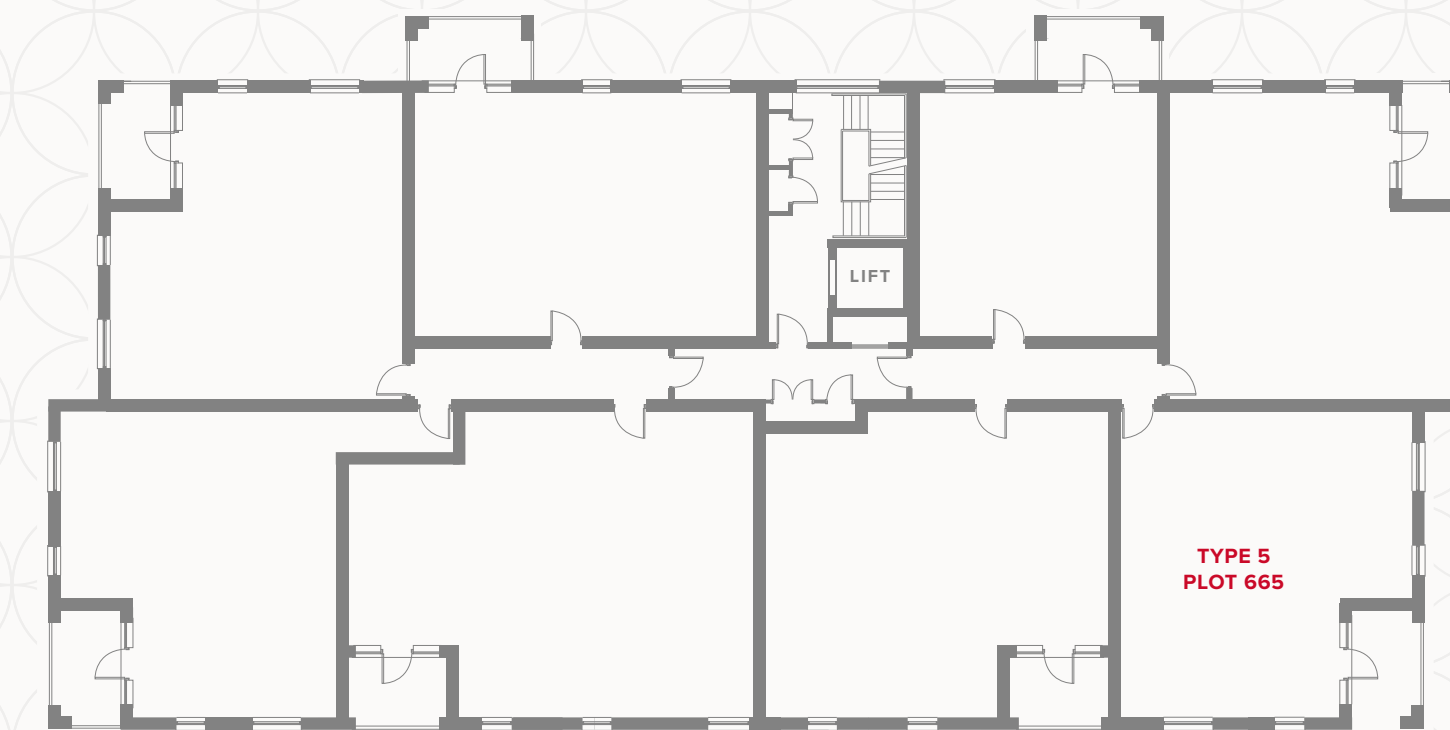
# APARTMENT TYPE 5

PLOT 665



# PLAZA CENTRAL WESTGATE HOUSE FIRST FLOOR

1	Kitchen	13' x 6'1"	3.95 x 1.87 m
2	Lounge/Dining	15'1" x 10'7"	4.6 x 3.22 m
3	Bedroom 1	16'5" x 9'1"	5.01 x 2.76 m
4	En-Suite	7'2" x 4'6"	2.18 x 1.37 m
5	Bedroom 2	14'2" x 8'9"	4.32 x 2.66 m
6	Bathroom	7'1" x 5'11"	2.16 x 1.8 m



## KEY

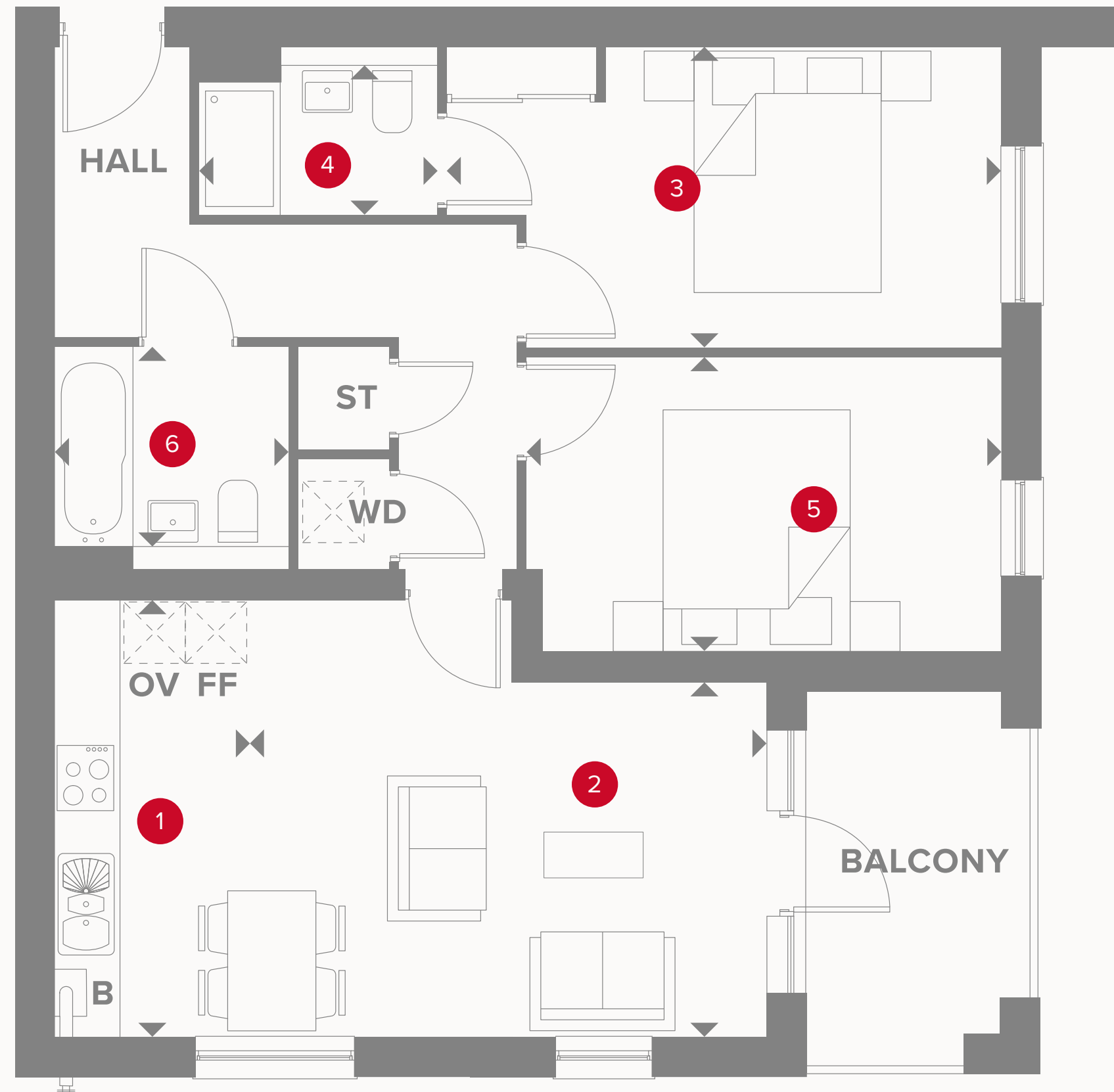
- Hob
- OV** Oven
- FF** Fridge/freezer
- B** Boiler

- Dimensions start
- ST** Storage cupboard
- WD** Washer/Dryer

Customers should note this illustration is an example of the Plaza Central Westgate House apartments. All dimensions indicated are approximate and the furniture layout is for illustrative purposes only. Materials used may differ from plot to plot including render and roof tile colours. Detailed plans and specifications are available for inspection for each plot at our Sales Centre during working hours and customers must check their individual specifications prior to making a reservation. Please see Sales Consultant for further details.

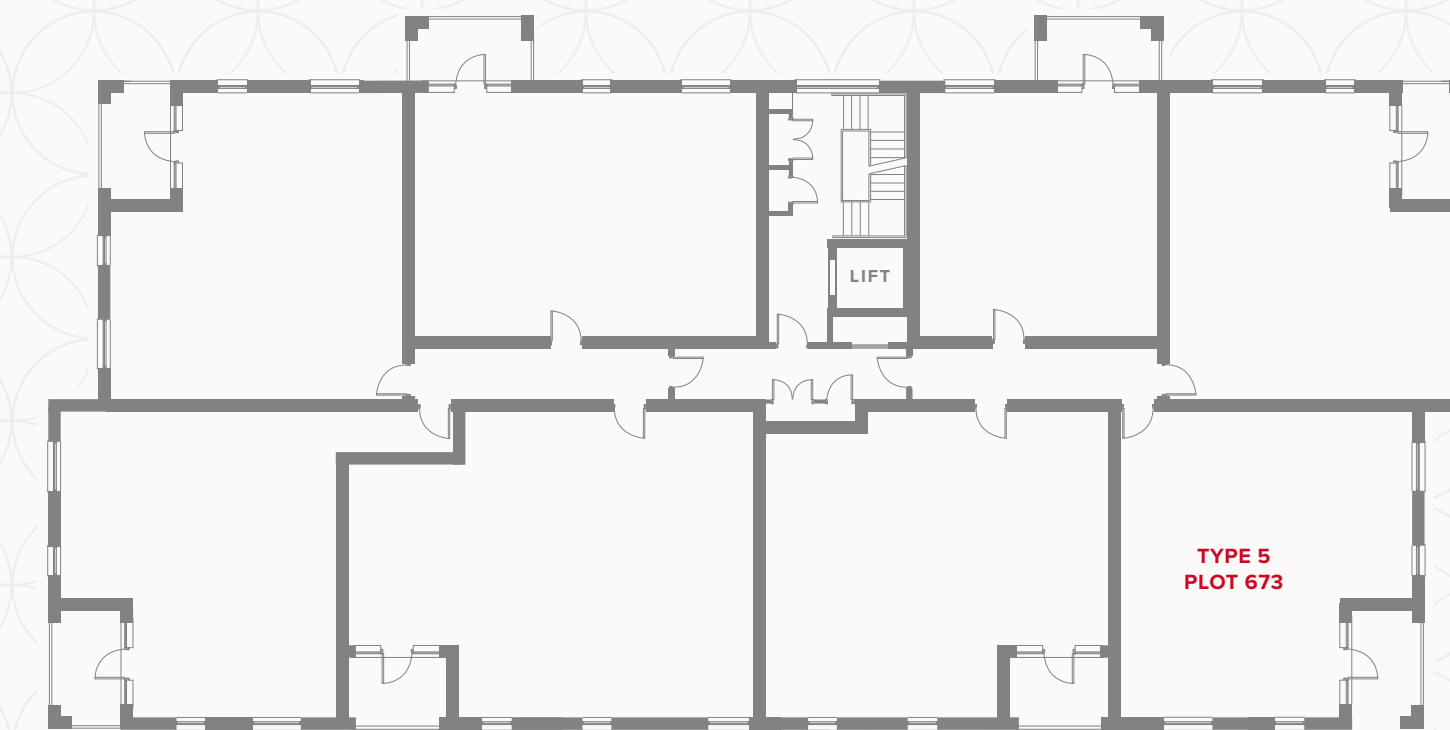
# APARTMENT TYPE 5

PLOT 673



# PLAZA CENTRAL WESTGATE HOUSE SECOND FLOOR

1	Kitchen	13' x 6'1"	3.95 x 1.87 m
2	Lounge/Dining	15'1" x 10'7"	4.6 x 3.22 m
3	Bedroom 1	16'5" x 9'1"	5.01 x 2.76 m
4	En-Suite	7'2" x 4'6"	2.18 x 1.37 m
5	Bedroom 2	14'2" x 8'9"	4.32 x 2.66 m
6	Bathroom	7'1" x 5'11"	2.16 x 1.8 m



## KEY

- Hob
- OV** Oven
- FF** Fridge/freezer
- B** Boiler

- Dimensions start
- ST** Storage cupboard
- WD** Washer/Dryer

Customers should note this illustration is an example of the Plaza Central Westgate House apartments. All dimensions indicated are approximate and the furniture layout is for illustrative purposes only. Materials used may differ from plot to plot including render and roof tile colours. Detailed plans and specifications are available for inspection for each plot at our Sales Centre during working hours and customers must check their individual specifications prior to making a reservation. Please see Sales Consultant for further details.