



TAILORED  
- REDROW -

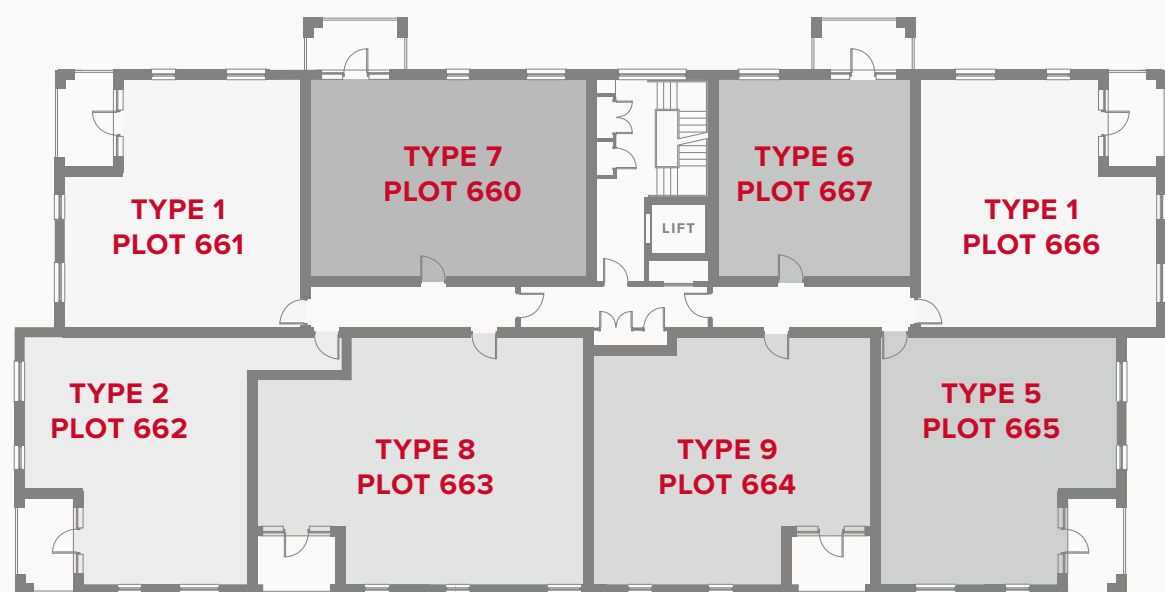
# PLAZA CENTRAL WESTGATE HOUSE

ONE & TWO BEDROOM APARTMENTS





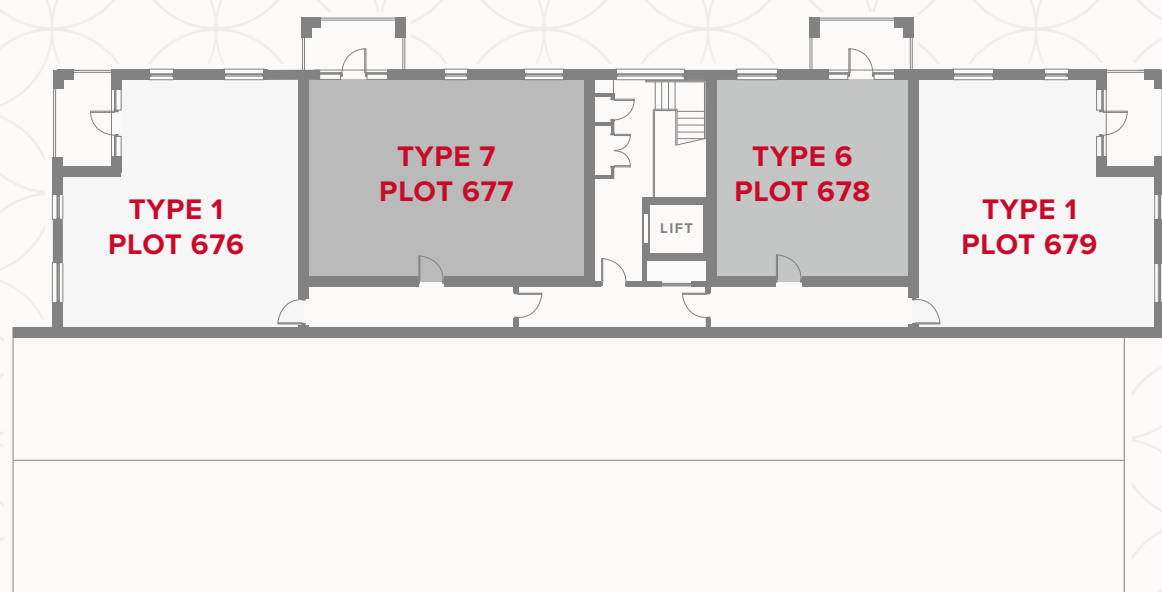
# FIRST FLOOR



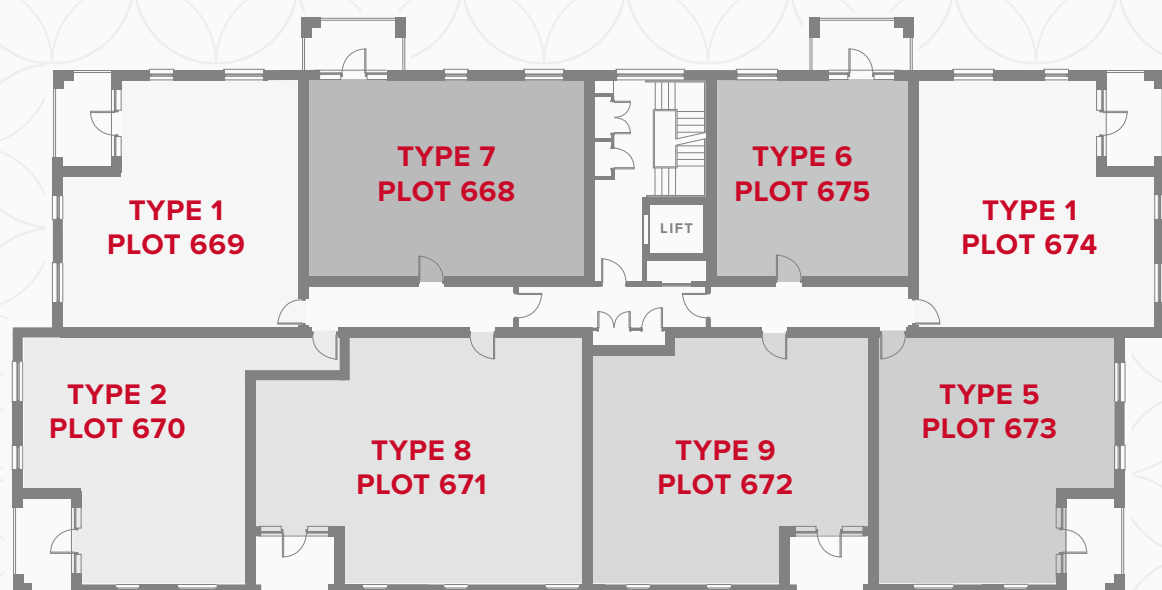
# GROUND FLOOR



# THIRD FLOOR



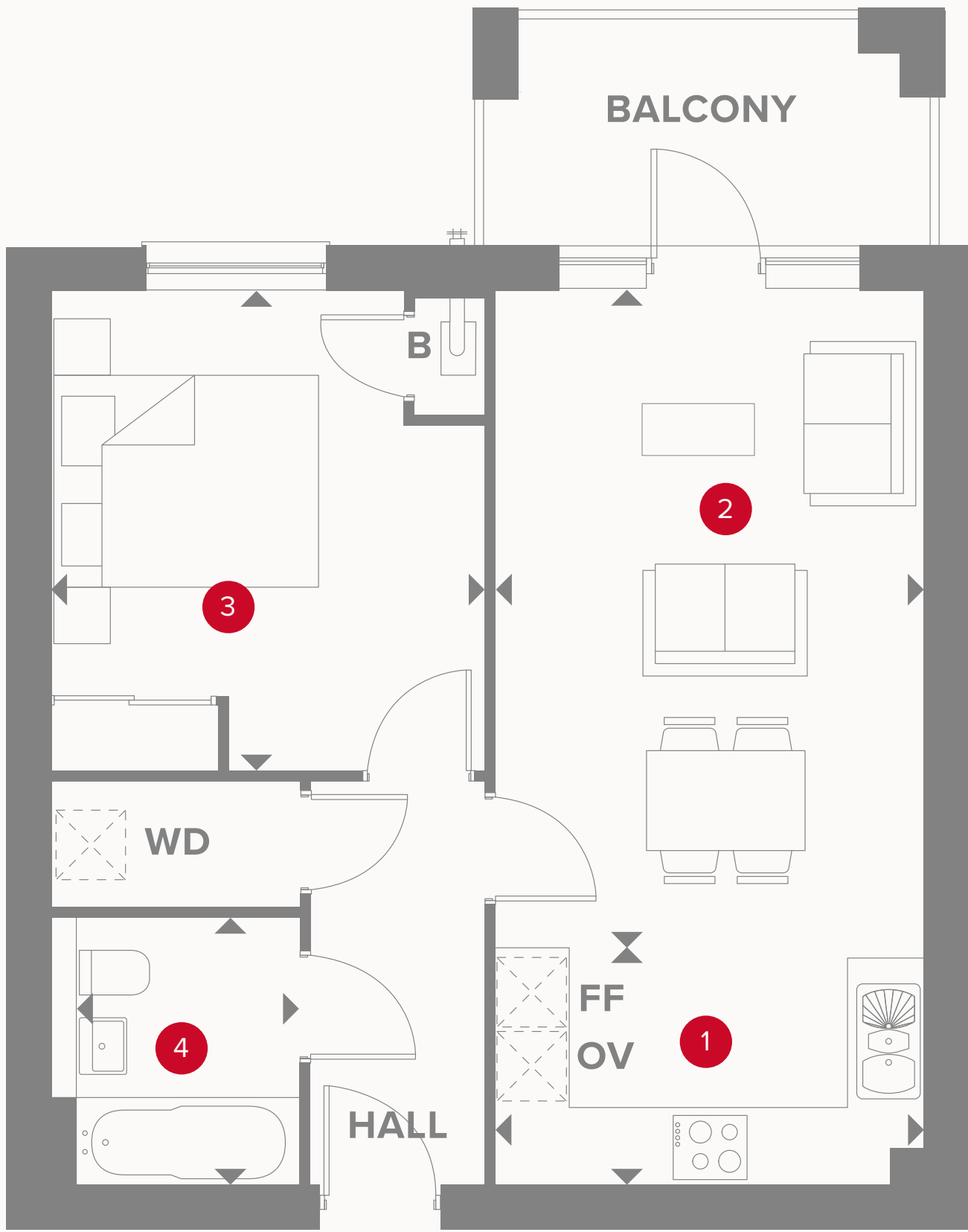
# SECOND FLOOR



Customers should note this illustration is an example of the Plaza Central Westgate House apartments. All dimensions indicated are approximate and the furniture layout is for illustrative purposes only. Materials used may differ from plot to plot including render and roof tile colours. Detailed plans and specifications are available for inspection for each plot at our Sales Centre during working hours and customers must check their individual specifications prior to making a reservation. Please see Sales Consultant for further details.

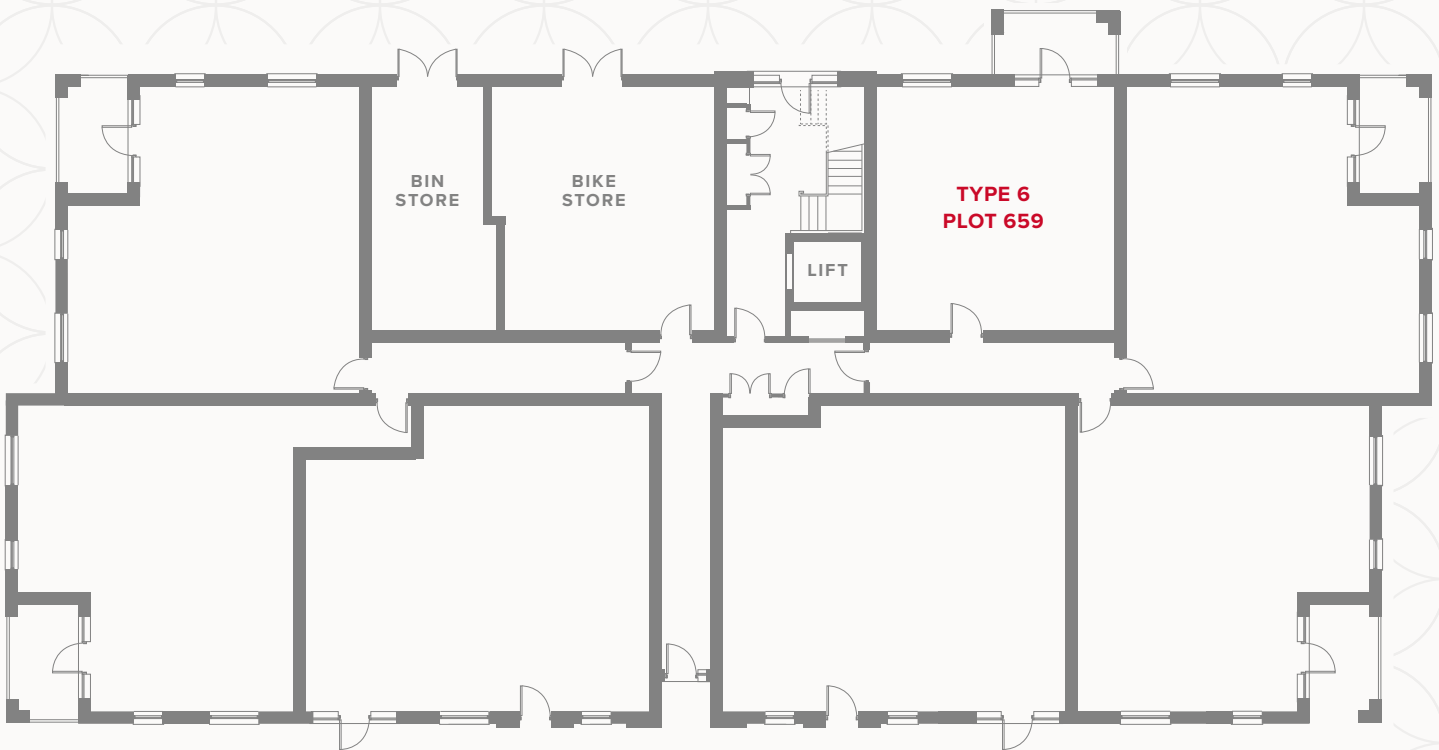
# APARTMENT TYPE 6

PLOT 659



# PLAZA CENTRAL WESTGATE HOUSE GROUND FLOOR

1	Kitchen	11'5" x 6'1"	3.48 x 1.85 m
2	Lounge/Dining	17'5" x 11'5"	5.31 x 3.48 m
3	Bedroom	12'8" x 11'4"	3.86 x 3.46 m
4	Bathroom	7'1" x 5'11"	2.16 x 1.8 m



## KEY

- Hob
- OV** Oven
- FF** Fridge/freezer
- B** Boiler

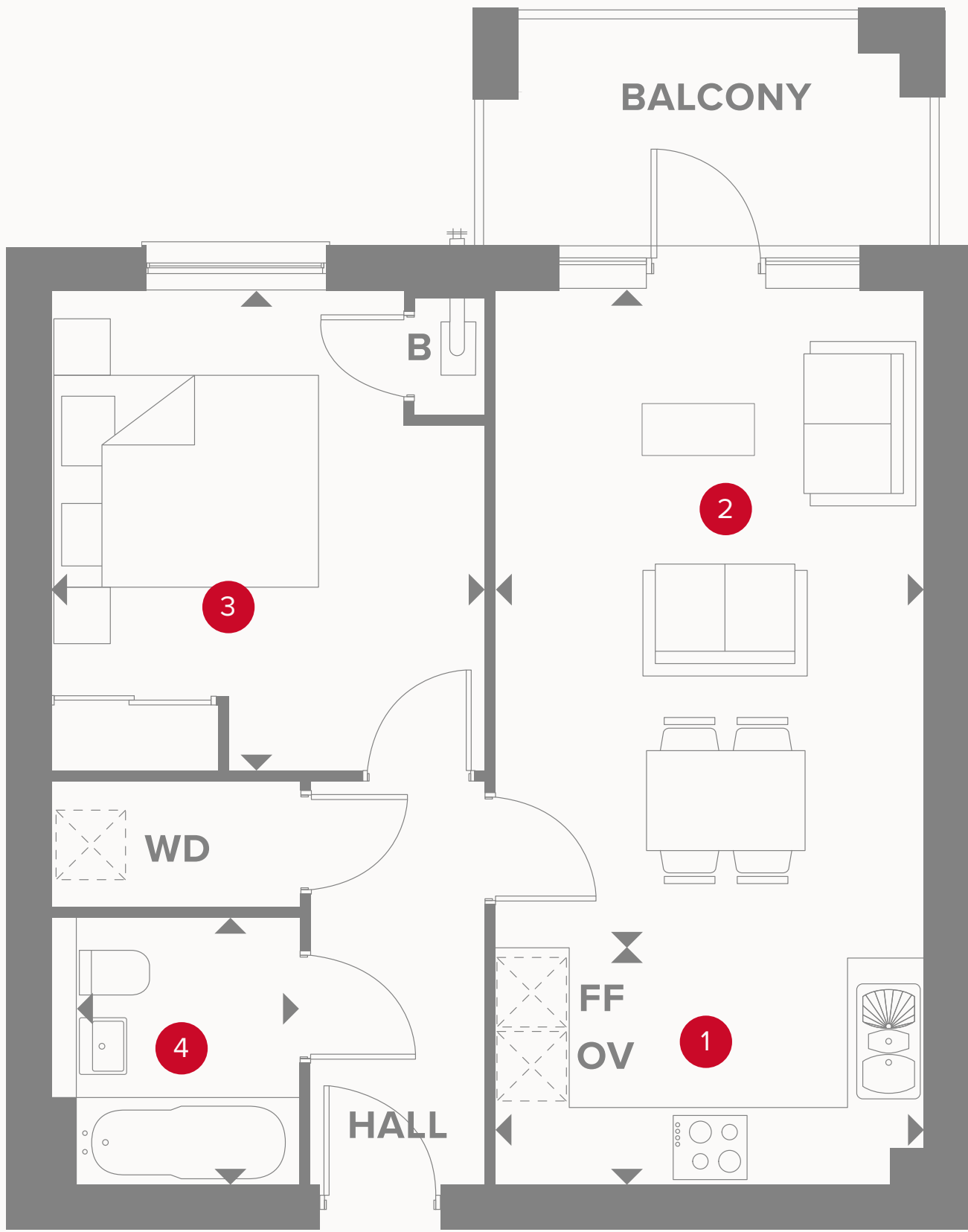
- Dimensions start
- ST** Storage cupboard
- WD** Washer/Dryer

Customers should note this illustration is an example of the Plaza Central Westgate House apartments. All dimensions indicated are approximate and the furniture layout is for illustrative purposes only. Materials used may differ from plot to plot including render and roof tile colours. Detailed plans and specifications are available for inspection for each plot at our Sales Centre during working hours and customers must check their individual specifications prior to making a reservation. Please see Sales Consultant for further details.

**CONSUMER  
CODE FOR  
HOME BUILDERS**  
[www.consumercode.co.uk](http://www.consumercode.co.uk)

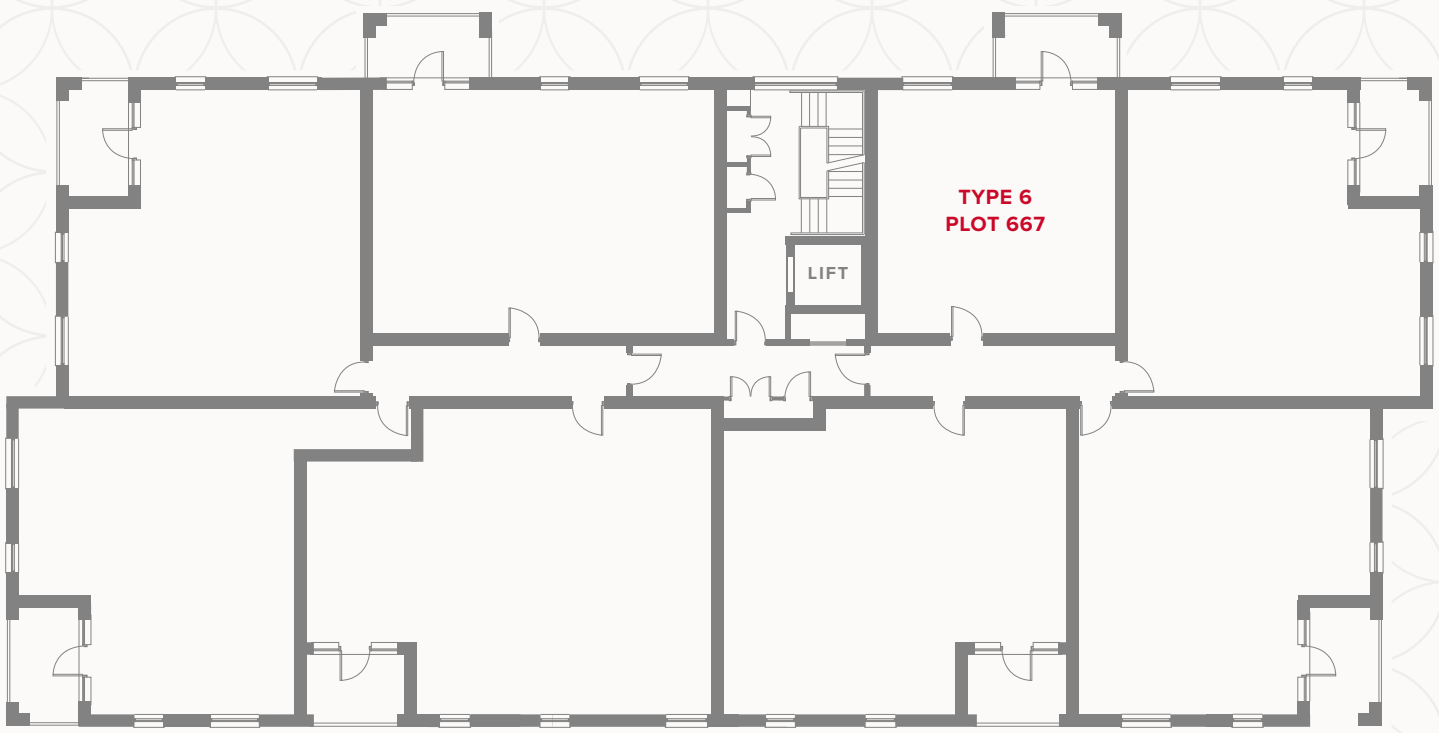
# APARTMENT TYPE 6

PLOT 667



# PLAZA CENTRAL WESTGATE HOUSE FIRST FLOOR

<b>1</b> Kitchen	11'5" x 6'1"	3.48 x 1.85 m
<b>2</b> Lounge/Dining	17'5" x 11'5"	5.31 x 3.48 m
<b>3</b> Bedroom	12'8" x 11'4"	3.86 x 3.46 m
<b>4</b> Bathroom	7'1" x 5'11"	2.16 x 1.8 m



## KEY

- Hob**
- OV** Oven
- FF** Fridge/freezer
- B** Boiler

- ST** Storage cupboard
- WD** Washer/Dryer

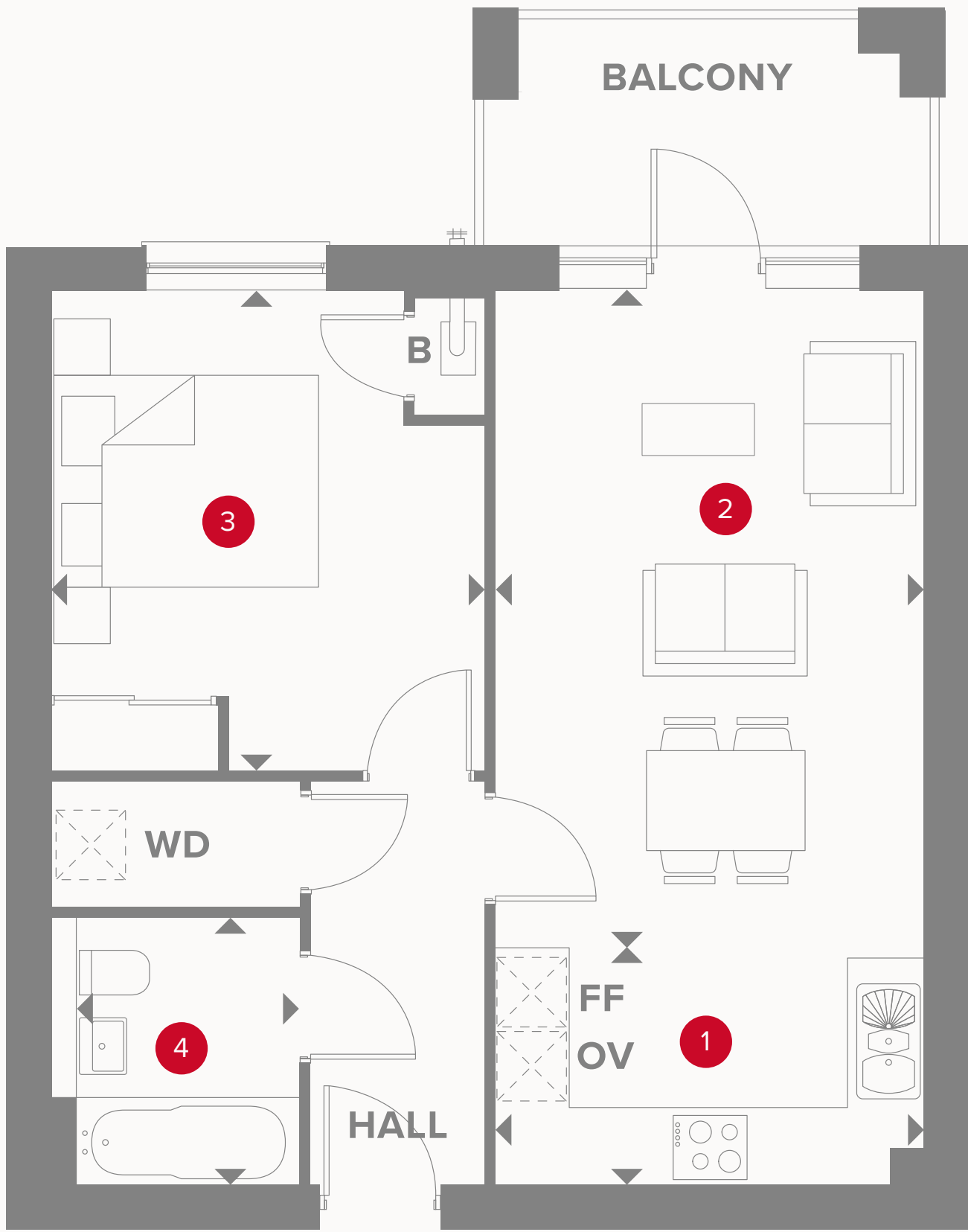
◀ Dimensions start

Customers should note this illustration is an example of the Plaza Central Westgate House apartments. All dimensions indicated are approximate and the furniture layout is for illustrative purposes only. Materials used may differ from plot to plot including render and roof tile colours. Detailed plans and specifications are available for inspection for each plot at our Sales Centre during working hours and customers must check their individual specifications prior to making a reservation. Please see Sales Consultant for further details.

**CONSUMER  
CODE FOR  
HOME BUILDERS**  
[www.consumercode.co.uk](http://www.consumercode.co.uk)

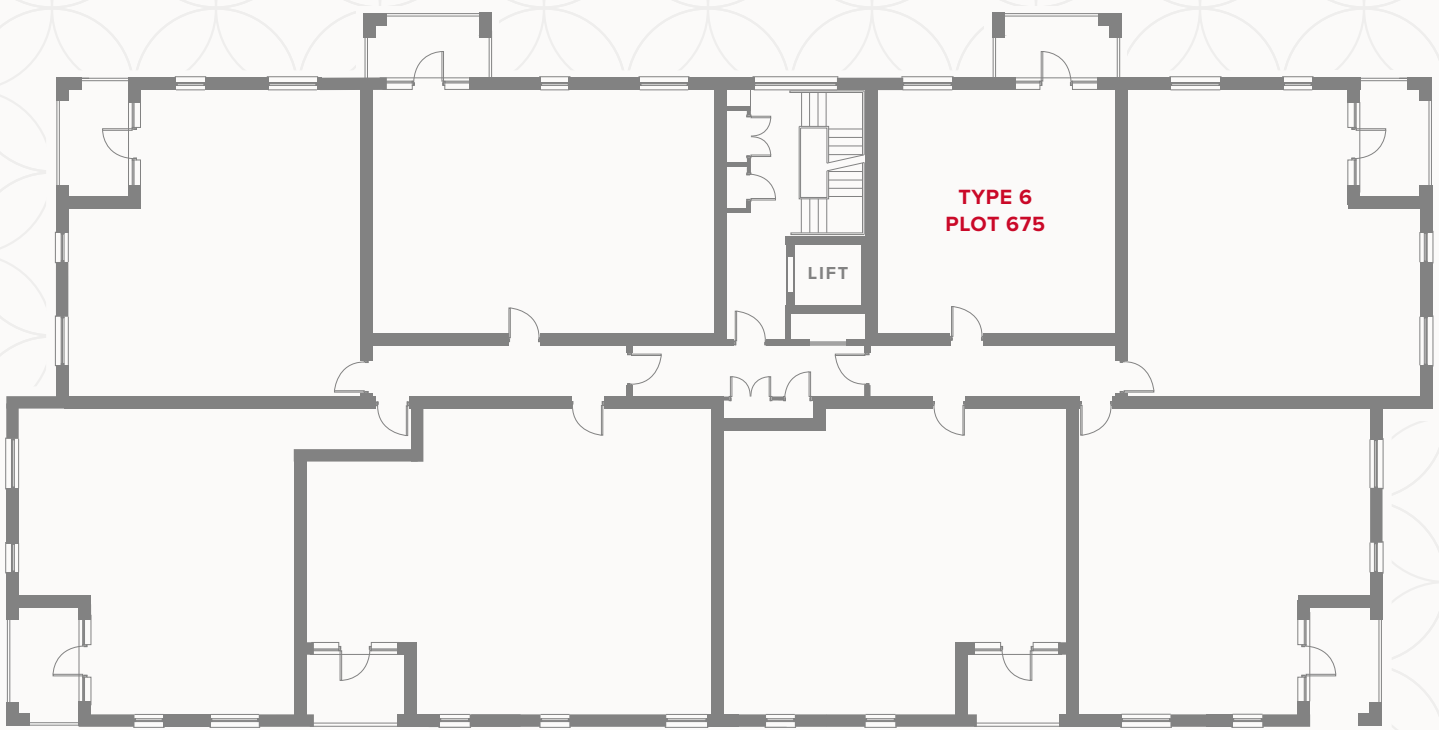
# APARTMENT TYPE 6

PLOT 675



# PLAZA CENTRAL WESTGATE HOUSE SECOND FLOOR

1	Kitchen	11'5" x 6'1"	3.48 x 1.85 m
2	Lounge/Dining	17'5" x 11'5"	5.31 x 3.48 m
3	Bedroom	12'8" x 11'4"	3.86 x 3.46 m
4	Bathroom	7'1" x 5'11"	2.16 x 1.8 m



## KEY

- Hob
- OV** Oven
- FF** Fridge/freezer
- B** Boiler

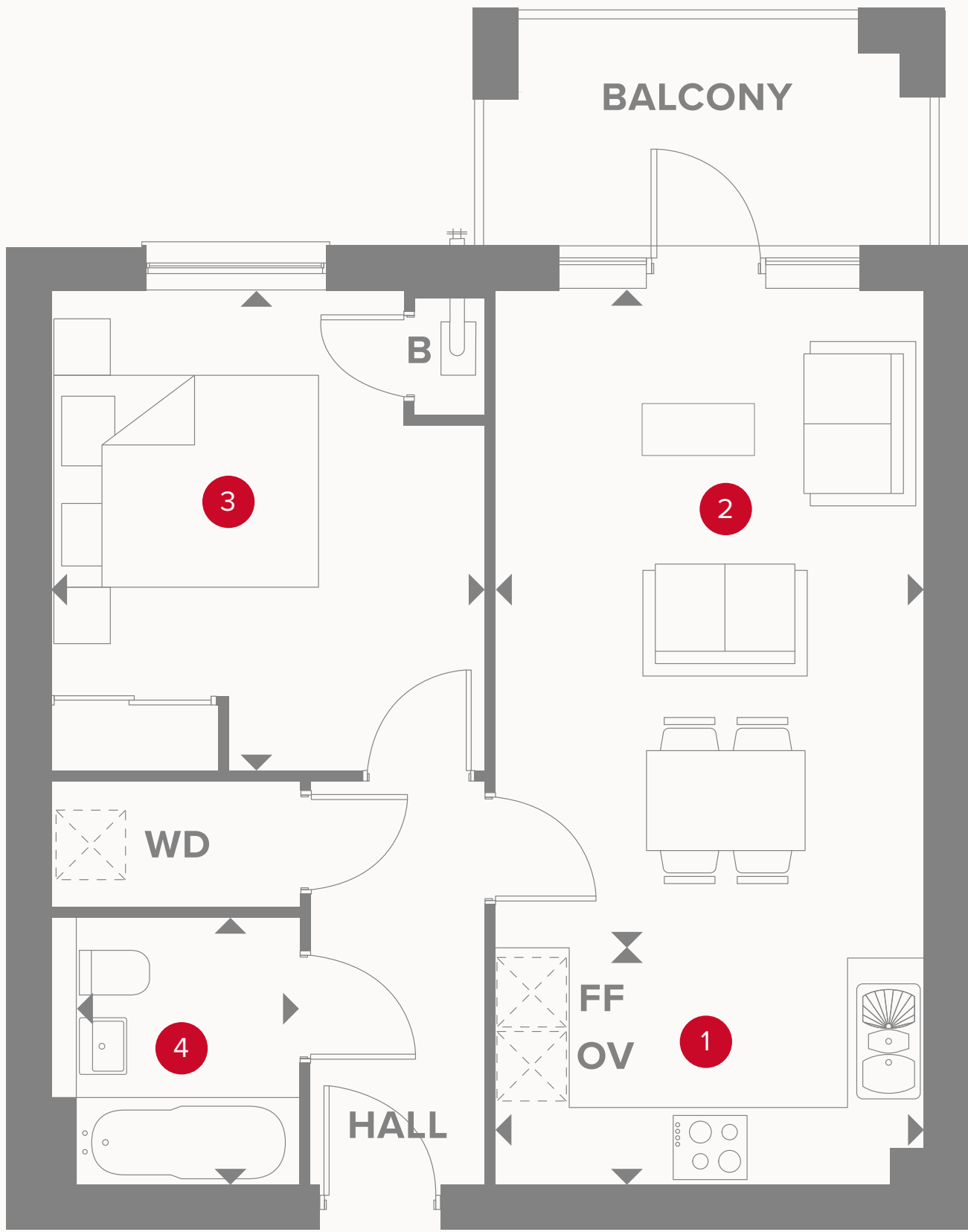
- Dimensions start
- ST** Storage cupboard
- WD** Washer/Dryer

Customers should note this illustration is an example of the Plaza Central Westgate House apartments. All dimensions indicated are approximate and the furniture layout is for illustrative purposes only. Materials used may differ from plot to plot including render and roof tile colours. Detailed plans and specifications are available for inspection for each plot at our Sales Centre during working hours and customers must check their individual specifications prior to making a reservation. Please see Sales Consultant for further details.

**CONSUMER  
CODE FOR  
HOME BUILDERS**  
[www.consumercode.co.uk](http://www.consumercode.co.uk)

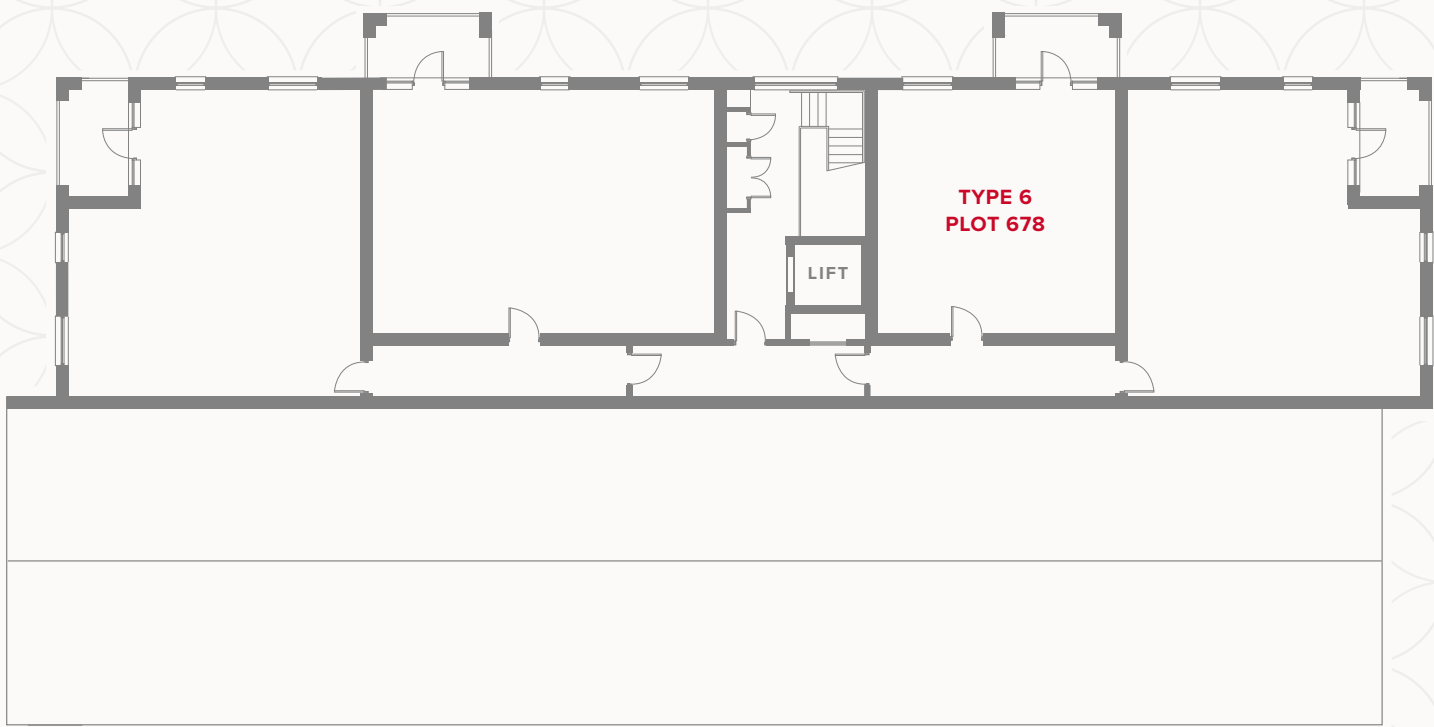
# APARTMENT TYPE 6

PLOT 678



# PLAZA CENTRAL WESTGATE HOUSE THIRD FLOOR

<b>1</b>	Kitchen	11'5" x 6'1"	3.48 x 1.85 m
<b>2</b>	Lounge/Dining	17'5" x 11'5"	5.31 x 3.48 m
<b>3</b>	Bedroom	12'8" x 11'4"	3.86 x 3.46 m
<b>4</b>	Bathroom	7'1" x 5'11"	2.16 x 1.8 m



## KEY

- Hob**
- OV** Oven
- FF** Fridge/freezer
- B** Boiler

- Dimensions start**
- ST** Storage cupboard
- WD** Washer/Dryer

Customers should note this illustration is an example of the Plaza Central Westgate House apartments. All dimensions indicated are approximate and the furniture layout is for illustrative purposes only. Materials used may differ from plot to plot including render and roof tile colours. Detailed plans and specifications are available for inspection for each plot at our Sales Centre during working hours and customers must check their individual specifications prior to making a reservation. Please see Sales Consultant for further details.

**CONSUMER  
CODE FOR  
HOME BUILDERS**  
[www.consumercode.co.uk](http://www.consumercode.co.uk)