



TAILORED

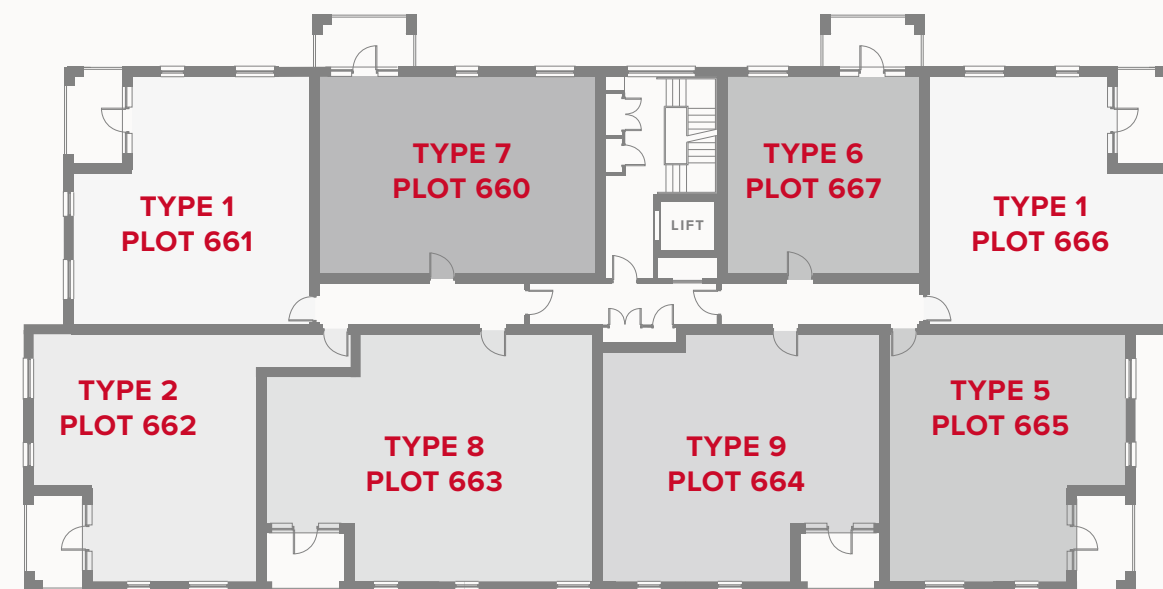
- REDROW -

PLAZA CENTRAL WESTGATE HOUSE

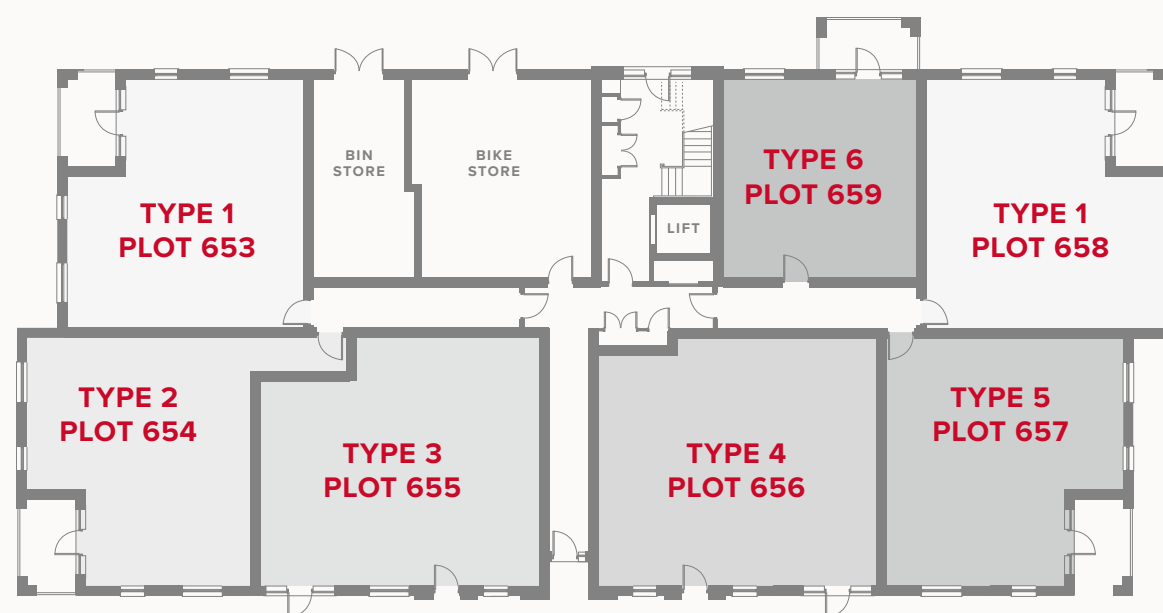
ONE & TWO BEDROOM APARTMENTS



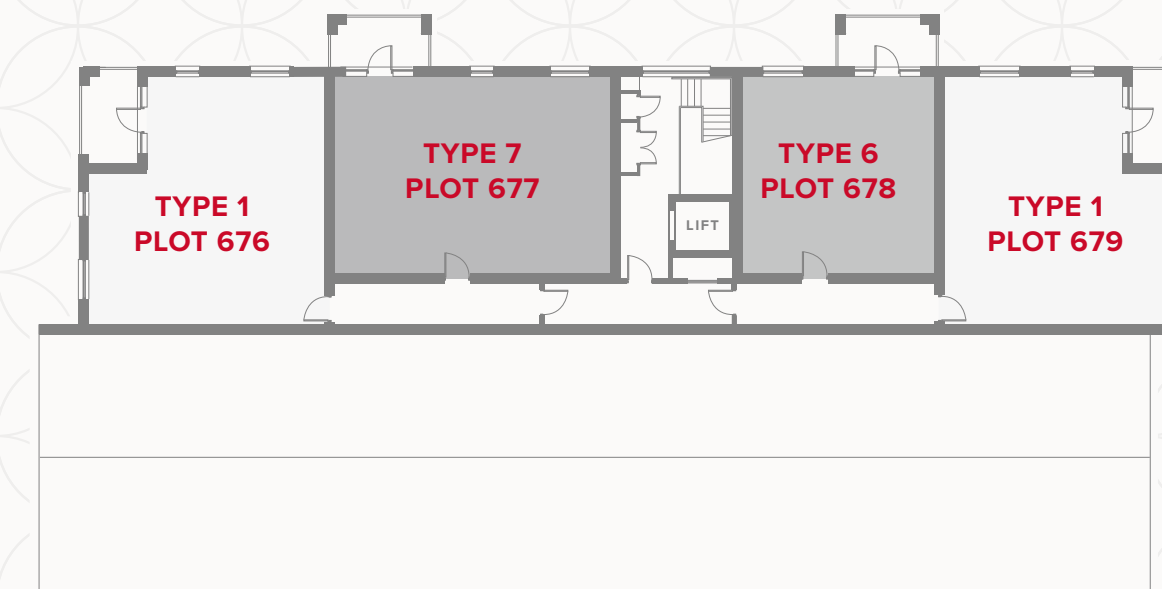
FIRST FLOOR



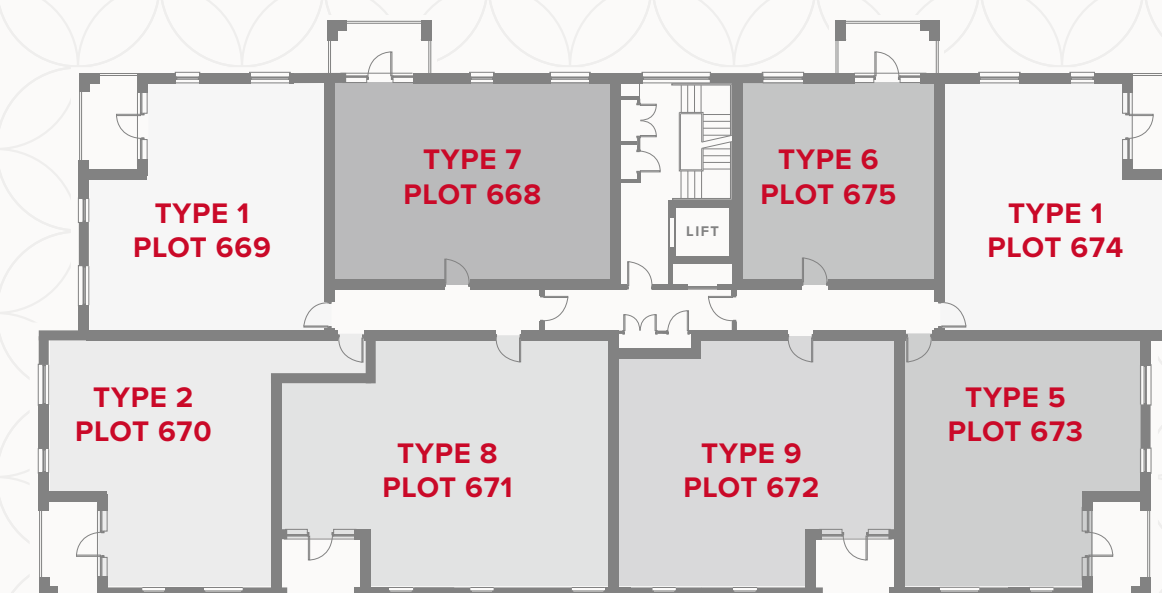
GROUND FLOOR



THIRD FLOOR

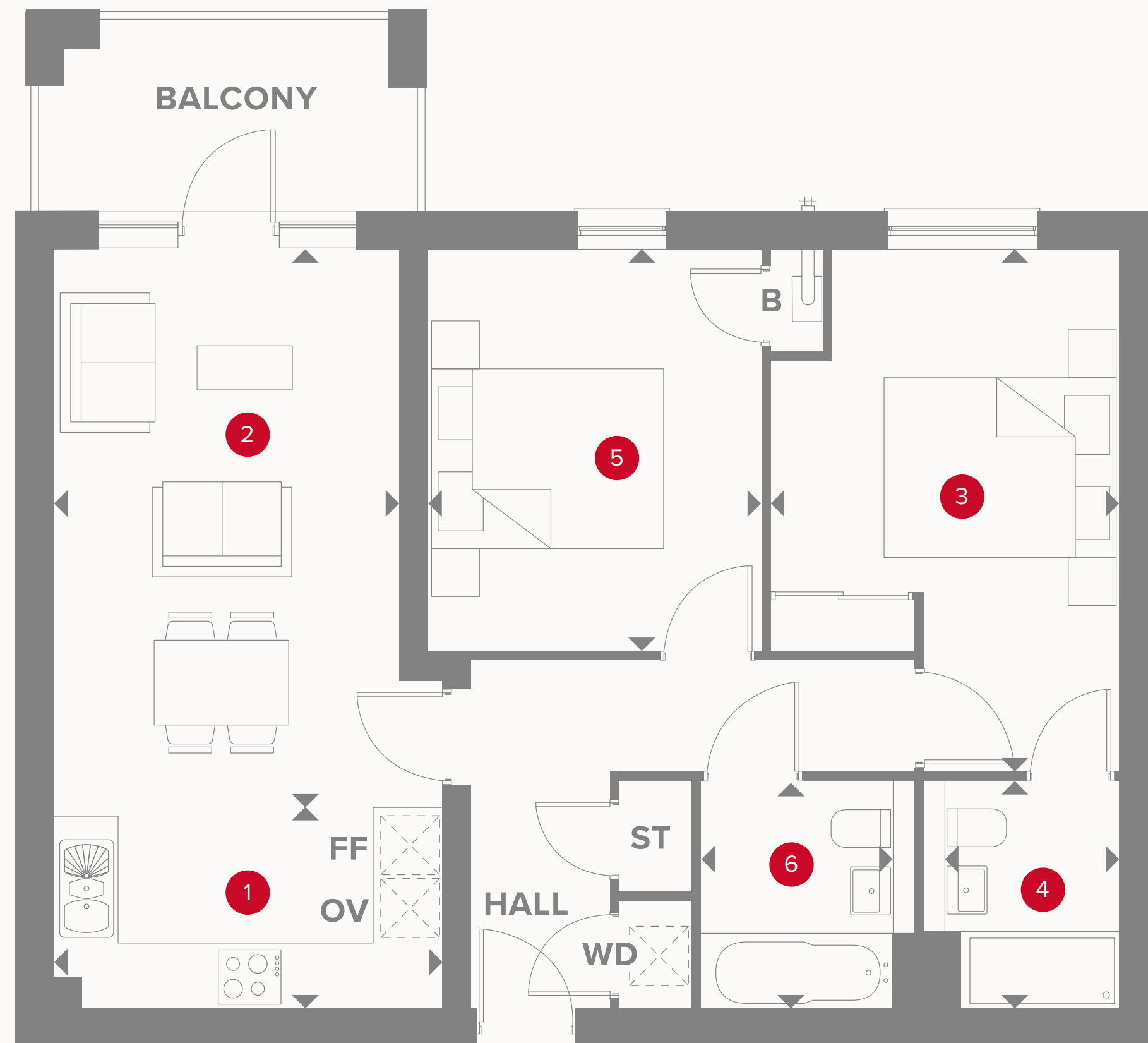


SECOND FLOOR



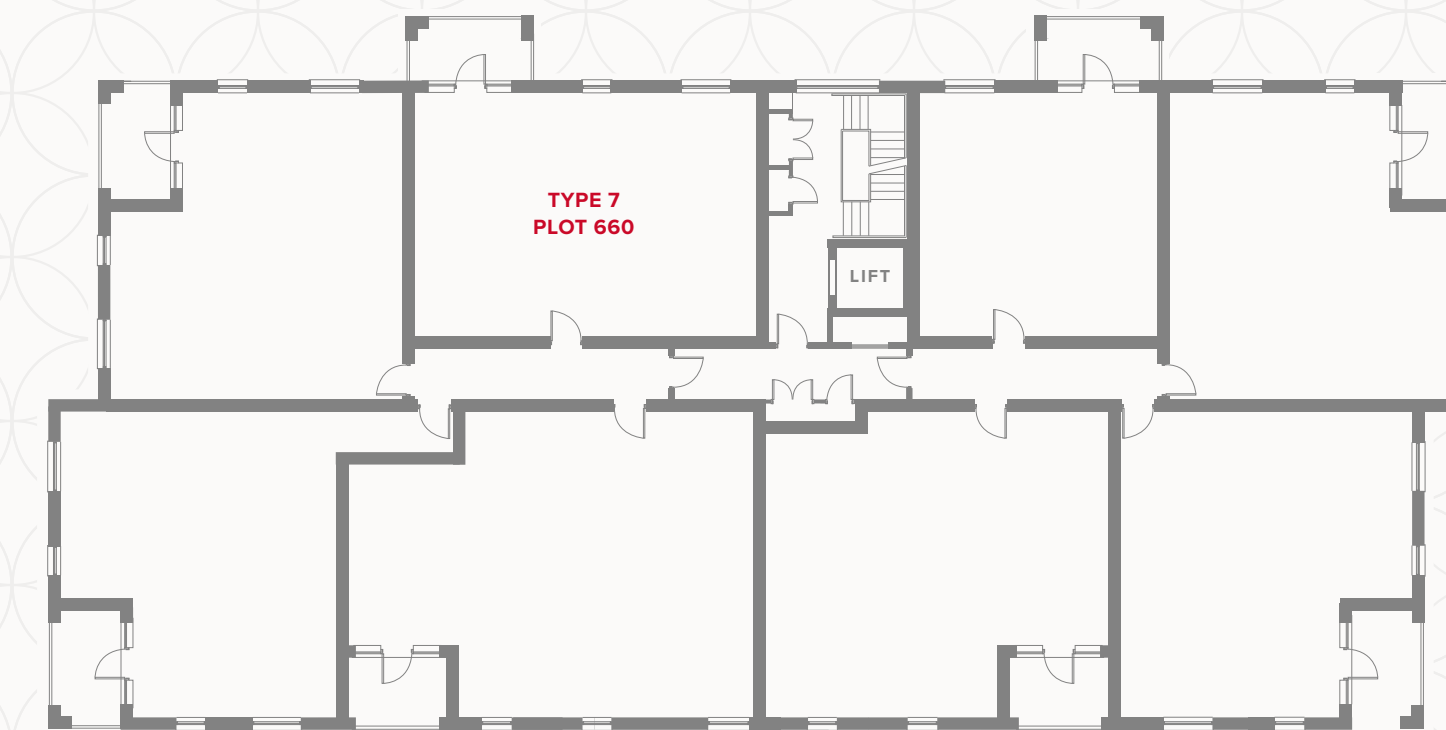
APARTMENT TYPE 7

PLOT 660



PLAZA CENTRAL WESTGATE HOUSE FIRST FLOOR

1	Kitchen	12' x 6'1"	3.65 x 1.85 m
2	Lounge/Dining	17'5" x 10'8"	5.31 x 3.25 m
3	Bedroom 1	16'2" x 10'11"	4.9 x 3.34 m
4	En-Suite	7'1" x 5'4"	2.16 x 1.62 m
5	Bedroom 2	12'6" x 10'3"	3.8 x 3.12 m
6	Bathroom	7'1" x 5'11"	2.16 x 1.8 m



KEY

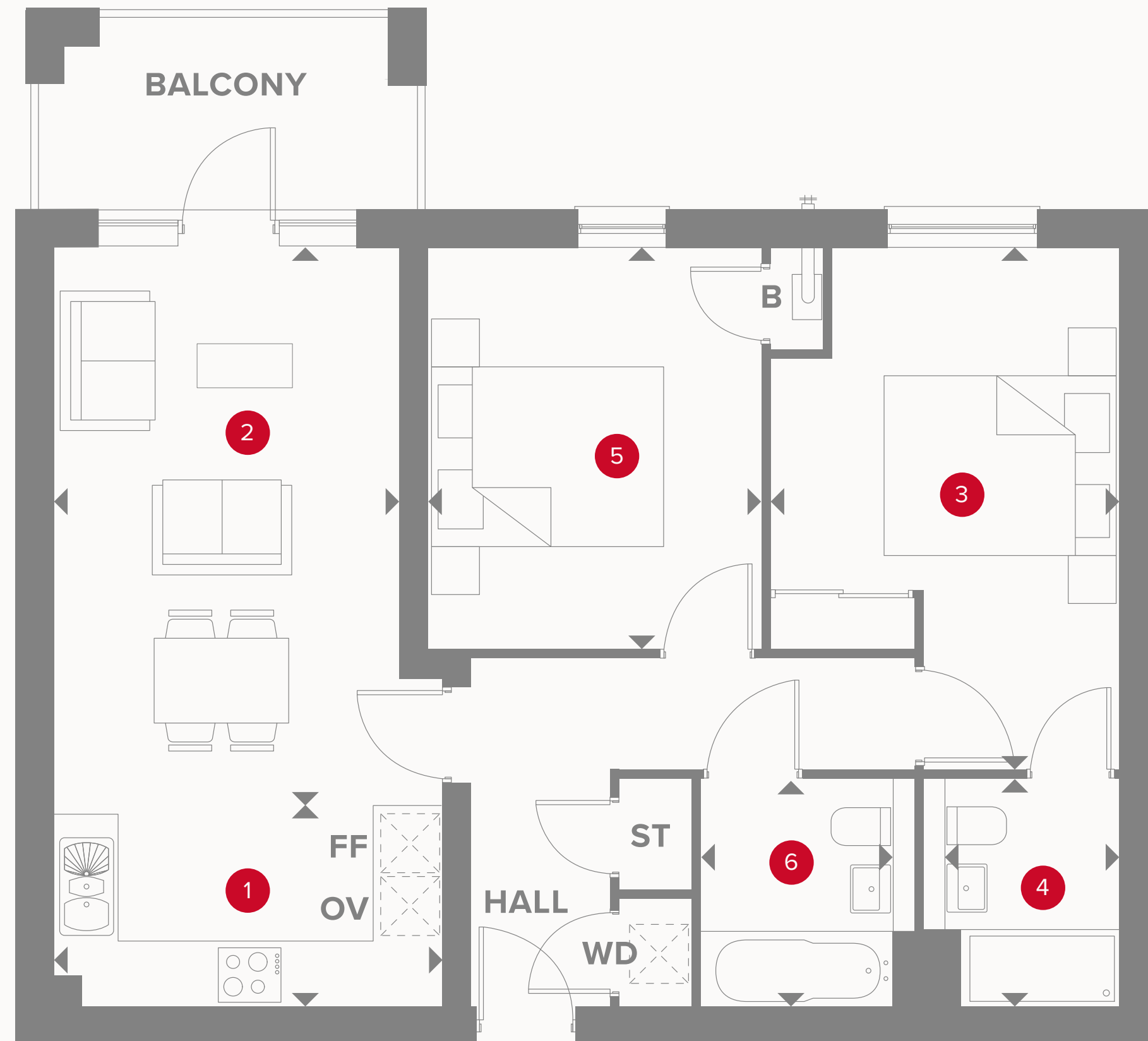
- Hob
- OV** Oven
- FF** Fridge/freezer
- B** Boiler

- Dimensions start
- ST** Storage cupboard
- WD** Washer/Dryer

Customers should note this illustration is an example of the Plaza Central Westgate House apartments. All dimensions indicated are approximate and the furniture layout is for illustrative purposes only. Materials used may differ from plot to plot including render and roof tile colours. Detailed plans and specifications are available for inspection for each plot at our Sales Centre during working hours and customers must check their individual specifications prior to making a reservation. Please see Sales Consultant for further details.

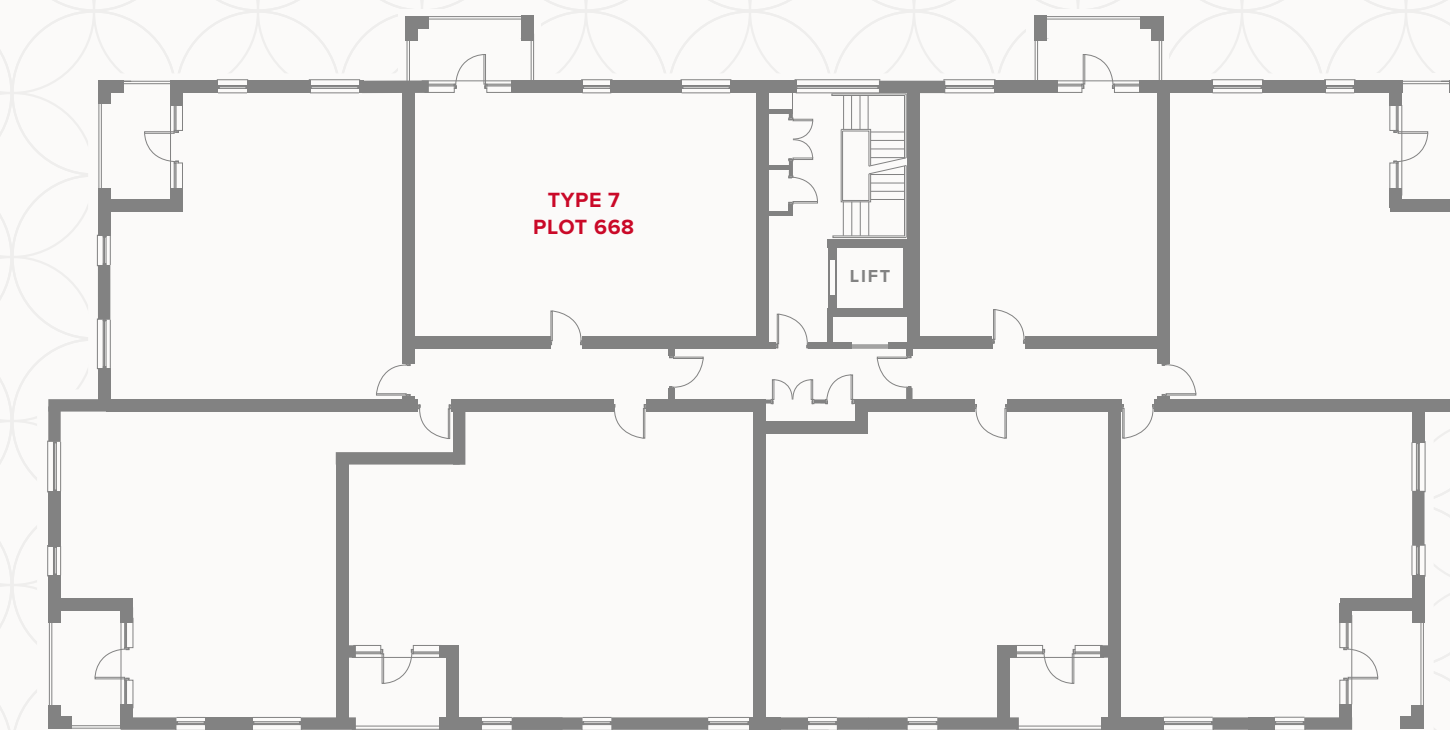
APARTMENT TYPE 7

PLOT 668



PLAZA CENTRAL WESTGATE HOUSE SECOND FLOOR

1	Kitchen	12' x 6'1"	3.65 x 1.85 m
2	Lounge/Dining	17'5" x 10'8"	5.31 x 3.25 m
3	Bedroom 1	12'6" x 10'11"	3.8 x 3.31 m
4	En-Suite	7'1" x 6'1"	2.16 x 1.86 m
5	Bedroom 2	12'6" x 10'4"	3.8 x 3.15 m
6	Bathroom	7'1" x 5'11"	2.16 x 1.8 m



KEY

- Hob
- OV** Oven
- FF** Fridge/freezer
- B** Boiler

- Dimensions start
- ST** Storage cupboard
- WD** Washer/Dryer

Customers should note this illustration is an example of the Plaza Central Westgate House apartments. All dimensions indicated are approximate and the furniture layout is for illustrative purposes only. Materials used may differ from plot to plot including render and roof tile colours. Detailed plans and specifications are available for inspection for each plot at our Sales Centre during working hours and customers must check their individual specifications prior to making a reservation. Please see Sales Consultant for further details.

**CONSUMER
CODE FOR
HOME BUILDERS**
www.consumercode.co.uk

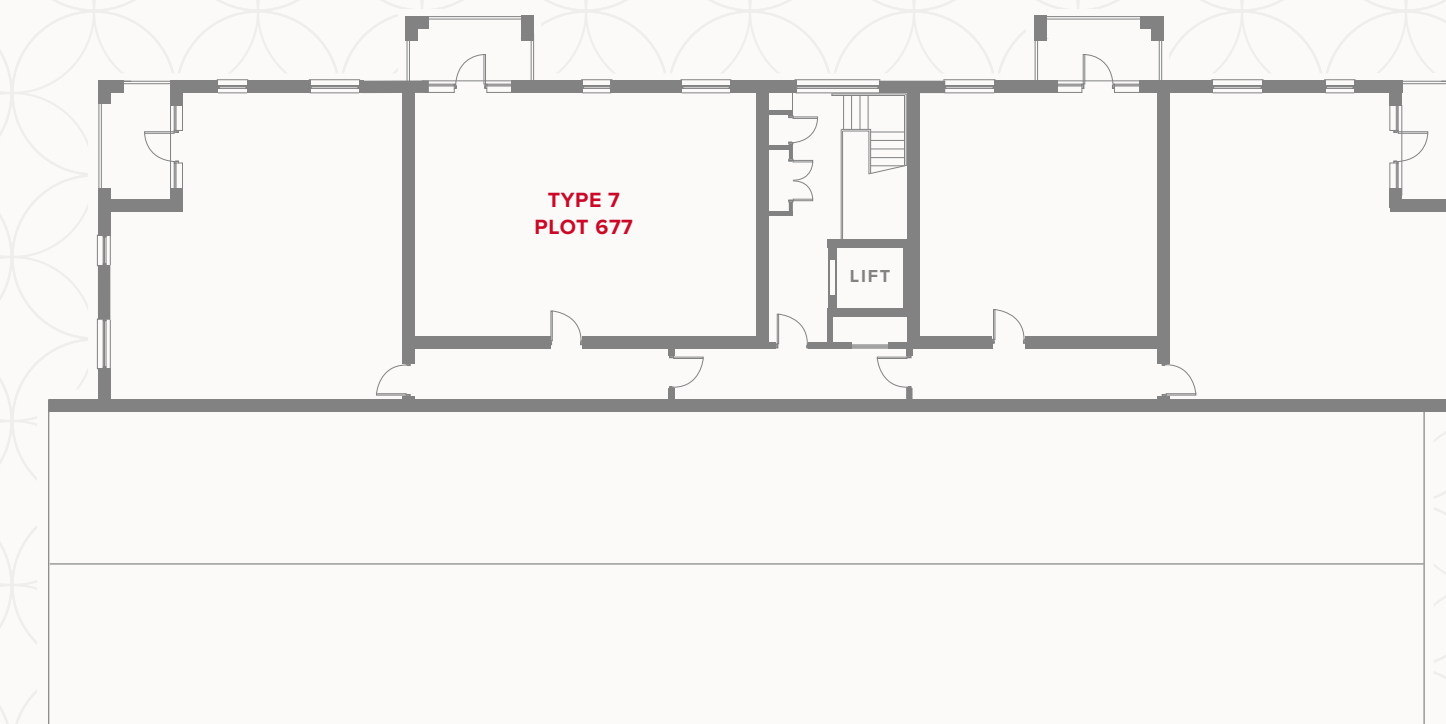
APARTMENT TYPE 7

PLOT 677



PLAZA CENTRAL WESTGATE HOUSE THIRD FLOOR

1	Kitchen	12' x 6'1"	3.65 x 1.85 m
2	Lounge/Dining	17'5" x 10'8"	5.31 x 3.25 m
3	Bedroom 1	12'6" x 10'11"	3.8 x 3.31 m
4	En-Suite	7'11" x 6'1"	2.16 x 1.86 m
5	Bedroom 2	12'6" x 10'4"	3.8 x 3.15 m
6	Bathroom	7'1" x 5'11"	2.16 x 1.8 m



KEY

- Hob
- OV** Oven
- FF** Fridge/freezer
- B** Boiler

- Dimensions start
- ST** Storage cupboard
- WD** Washer/Dryer

Customers should note this illustration is an example of the Plaza Central Westgate House apartments. All dimensions indicated are approximate and the furniture layout is for illustrative purposes only. Materials used may differ from plot to plot including render and roof tile colours. Detailed plans and specifications are available for inspection for each plot at our Sales Centre during working hours and customers must check their individual specifications prior to making a reservation. Please see Sales Consultant for further details.