



The Grantham⁴

Four Bedroom Home





The Grantham⁴

Four Bedroom Home

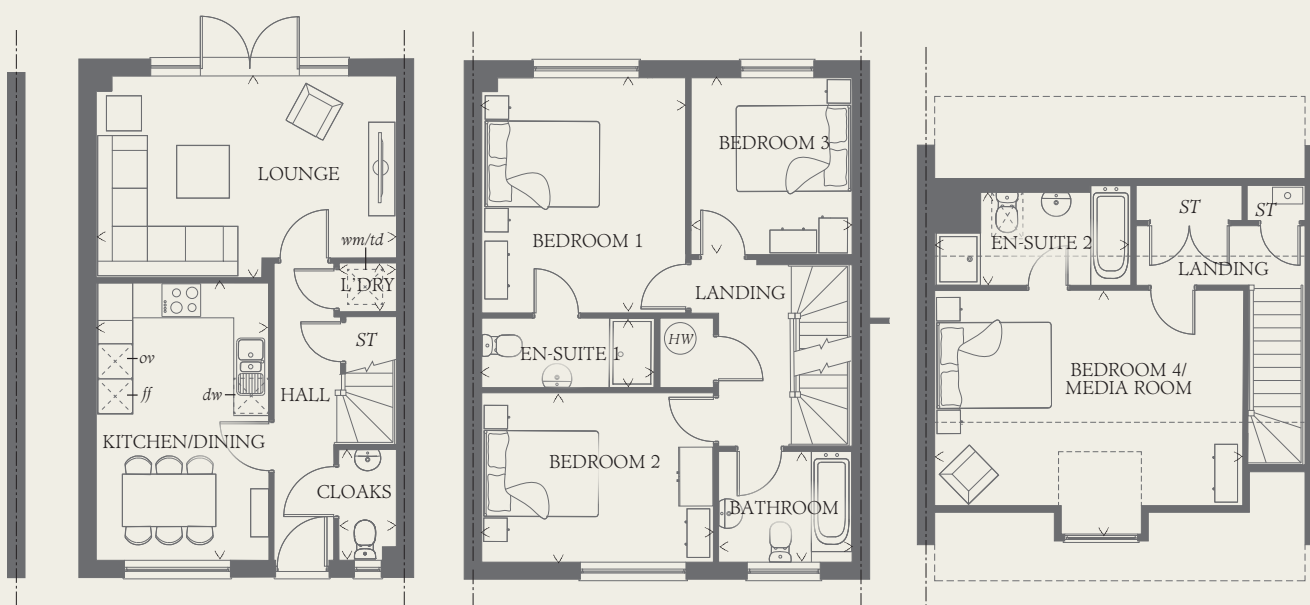




The Grantham⁴

Four Bedroom Home

Carefully considered design elevates this three storey home above its townhouse rivals, creating a superb home of spacious rooms that reach their peak in the exceptional second floor master suite, which is so much more than just a bedroom.



GROUND FLOOR

LOUNGE	16'8" x 11'3"	5.09 x 3.43 m
KITCHEN/ DINING	15'6" x 9'7"	4.73 x 2.93 m
CLOAKS	6'2" x 3'2"	1.87 x 0.96 m
LAUNDRY	3'2" x 2'9"	0.96 x 0.84 m

FIRST FLOOR

BEDROOM 1	13'1" x 11'5"	4.00 x 3.47 m
EN-SUITE 1	9'8" x 3'11"	2.94 x 1.19 m
BEDROOM 2	12'11" x 9'5"	3.94 x 2.87 m
BEDROOM 3	9'10" x 8'11"	3.00 x 2.73 m
BATHROOM	7'5" x 6'2"	2.26 x 1.87 m

SECOND FLOOR

BEDROOM 4/ MEDIA ROOM	17'1" x 13'9"	5.20 x 4.19 m
EN-SUITE 2	11'7" x 5'1"	3.54 x 1.54 m

CONSUMER CODE FOR HOME BUILDERS

www.consumercode.co.uk

Customers should note this illustration is an example of the Grantham⁴ house type. All dimensions indicated are approximate and the furniture layout is for illustrative purposes only. Homes may be 'handed' (mirror image) versions of the illustrations, and may be detached, semi-detached or terraced. Materials used may differ from plot to plot including render and roof tile colours. Detailed plans and specifications are available for inspection for each plot at our Sales Centre during working hours and customers must check their individual specifications prior to making a reservation.

KEY

Hob	<i>td</i> Tumble dryer space
<i>ov</i> Oven	Hot water cylinder
<i>ff</i> Fridge/freezer	<i>ST</i> Cupboard
<i>wm</i> Washing machine space	
<i>dw</i> Dishwasher space	

> Max dimensions Note: Bedroom dimensions taken into wardrobe recess. All wardrobes are subject to site specification. Please see Sales Consultant for further details.

THINK 191168_EF_GRA4_MM.2.0 RV