



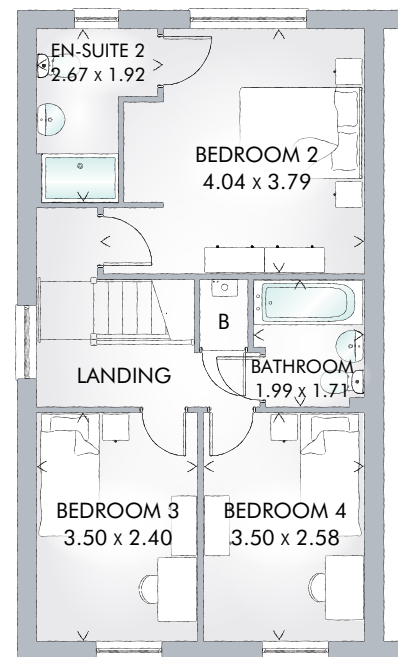
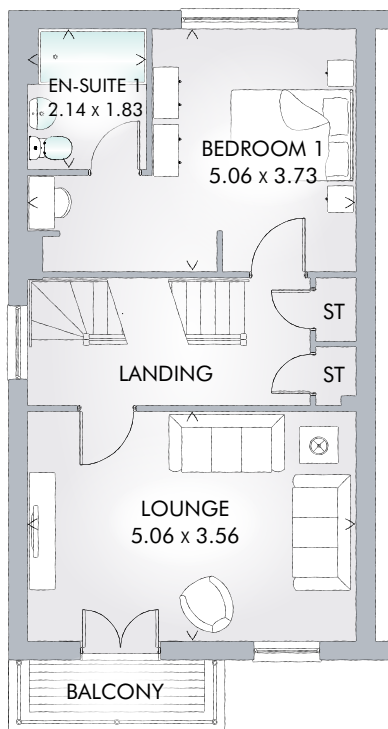
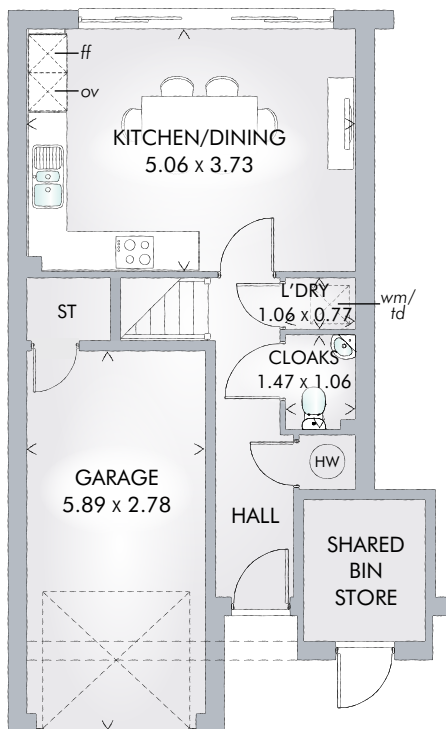
# FITZROY END

FOUR BEDROOM HOME



 REDROW

# FITZROY<sup>END</sup>



The Fitzroy<sup>End</sup> boasts a stunning Chelsea styled exterior however that's not all that will impress. The interior is set across three floors, which is home to 4 bedrooms, two en-suites along with a spacious lounge giving you and the family the space and comforts you deserve.

## FOUR BEDROOM HOME

### GROUND FLOOR

|                    |               |               |
|--------------------|---------------|---------------|
| Kitchen/<br>Dining | 16'7" x 12'3" | 5.06 x 3.73 m |
| Laundry            | 3'6" x 2'6"   | 1.06 x 0.77 m |
| Cloaks             | 4'10" x 3'6"  | 1.47 x 1.06 m |
| Garage             | 19'4" x 9'1"  | 5.89 x 2.78 m |

### FIRST FLOOR

|            |               |               |
|------------|---------------|---------------|
| Lounge     | 16'7" x 11'8" | 5.06 x 3.56 m |
| Bedroom 1  | 16'7" x 12'3" | 5.06 x 3.73 m |
| En-suite 1 | 7'0" x 6'0"   | 2.14 x 1.83 m |

### SECOND FLOOR

|            |               |               |
|------------|---------------|---------------|
| Bedroom 2  | 13'3" x 12'5" | 4.04 x 3.79 m |
| En-suite 2 | 8'9" x 6'2"   | 2.67 x 1.92 m |
| Bedroom 3  | 11'6" x 7'10" | 3.50 x 2.40 m |
| Bedroom 4  | 11'6" x 8'6"  | 3.50 x 2.58 m |
| Bathroom   | 6'6" x 5'7"   | 1.99 x 1.71 m |

#### CONSUMER CODE FOR HOME BUILDERS

[www.consumercode.co.uk](http://www.consumercode.co.uk)

Customers should note this illustration is an example of the Fitzroy<sup>End</sup> house type. All dimensions indicated are approximate and furniture layout is for illustrative purposes only. Homes may be a 'handed' (mirror image) versions of the illustrations, and may be detached, semi-detached or terraced. Materials used may differ from plot to plot including render and roof tile colours. Detailed plans and specifications are available for inspection for each plot at our Sales Centre during working hours and customers must check their individual specifications prior to making reservation.

KEY Hob Oven Fridge/freezer Washing machine Dishwasher space Tumble dryer Cupboard

< Denotes where dimensions are taken from. All wardrobes are subject to site specification. Please see Sales Consultant for further details.

Traditional homes, built the way you remember

