



HERITAGE

- REDROW -

THE WINDSOR

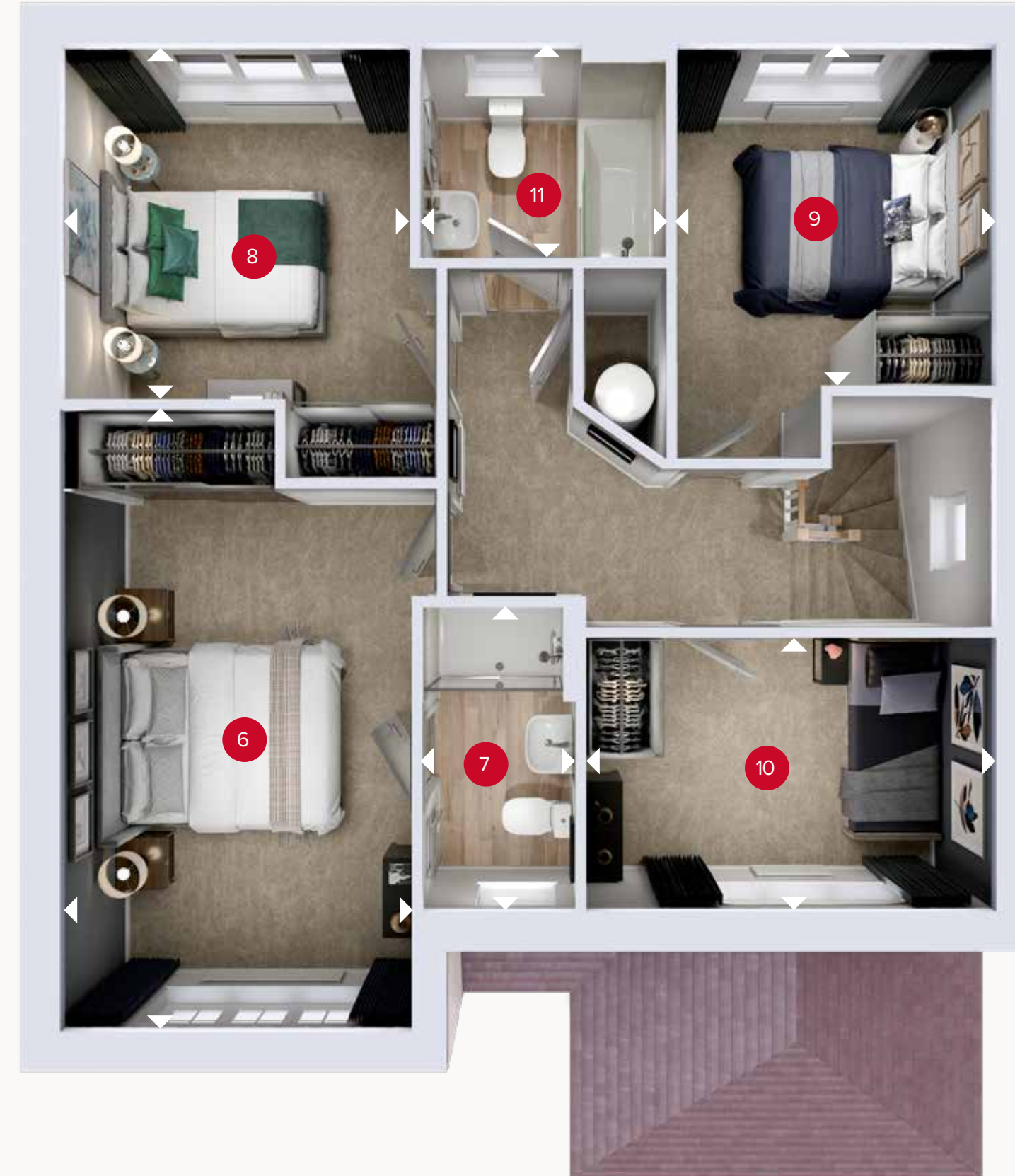
FOUR BEDROOM DETACHED HOME

 **REDROW**

THE WINDSOR



GROUND FLOOR



FIRST FLOOR

GROUND FLOOR

1	Kitchen/ Dining	18'2" x 17'1"	5.53 x 5.22 m
2	Lounge	10'9" x 10'8"	3.28 x 3.26 m
3	Utility	7'4" x 6'3"	2.23 x 1.91 m
4	Cloaks	5'7" x 3'1"	1.69 x 0.94 m
5	Garage	19'1" x 9'11"	5.81 x 3.00 m

FIRST FLOOR

6	Bedroom 1	17'0" x 9'6"	5.19 x 2.89 m
7	En-suite	8'2" x 4'3"	2.48 x 1.29 m
8	Bedroom 2	10'3" x 9'7"	3.13 x 2.91 m
9	Bedroom 3	10'3" x 9'7"	3.13 x 2.91 m
10	Bedroom 4	11'5" x 7'3"	3.49 x 2.22 m
11	Bathroom	6'9" x 6'4"	2.07 x 1.94 m