



**TAILORED**

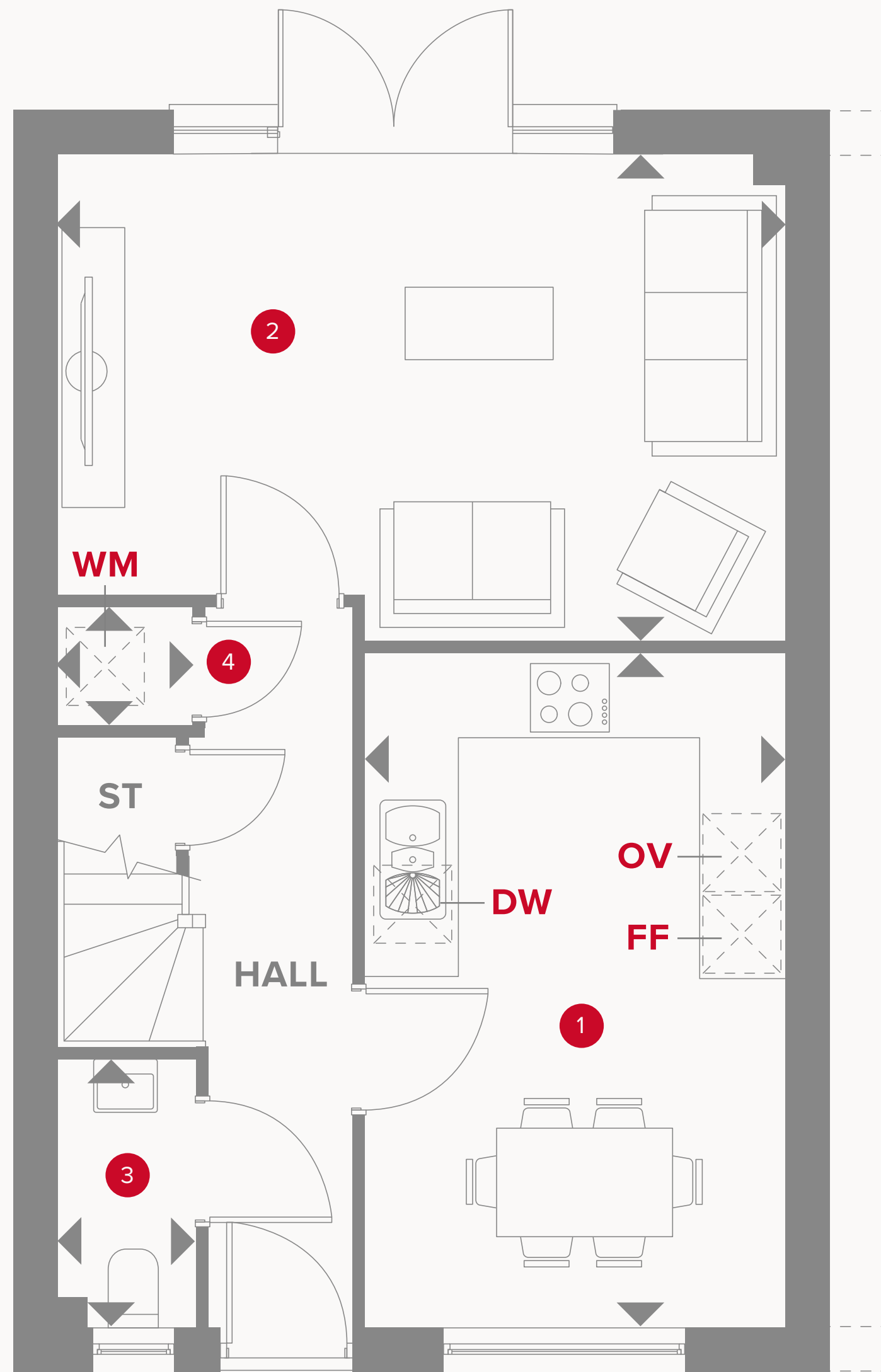
- REDROW -

# THE CHARTHAM

FOUR BEDROOM SEMI-DETACHED HOME

 **REDROW**











# THE CHARTHAM GROUND FLOOR

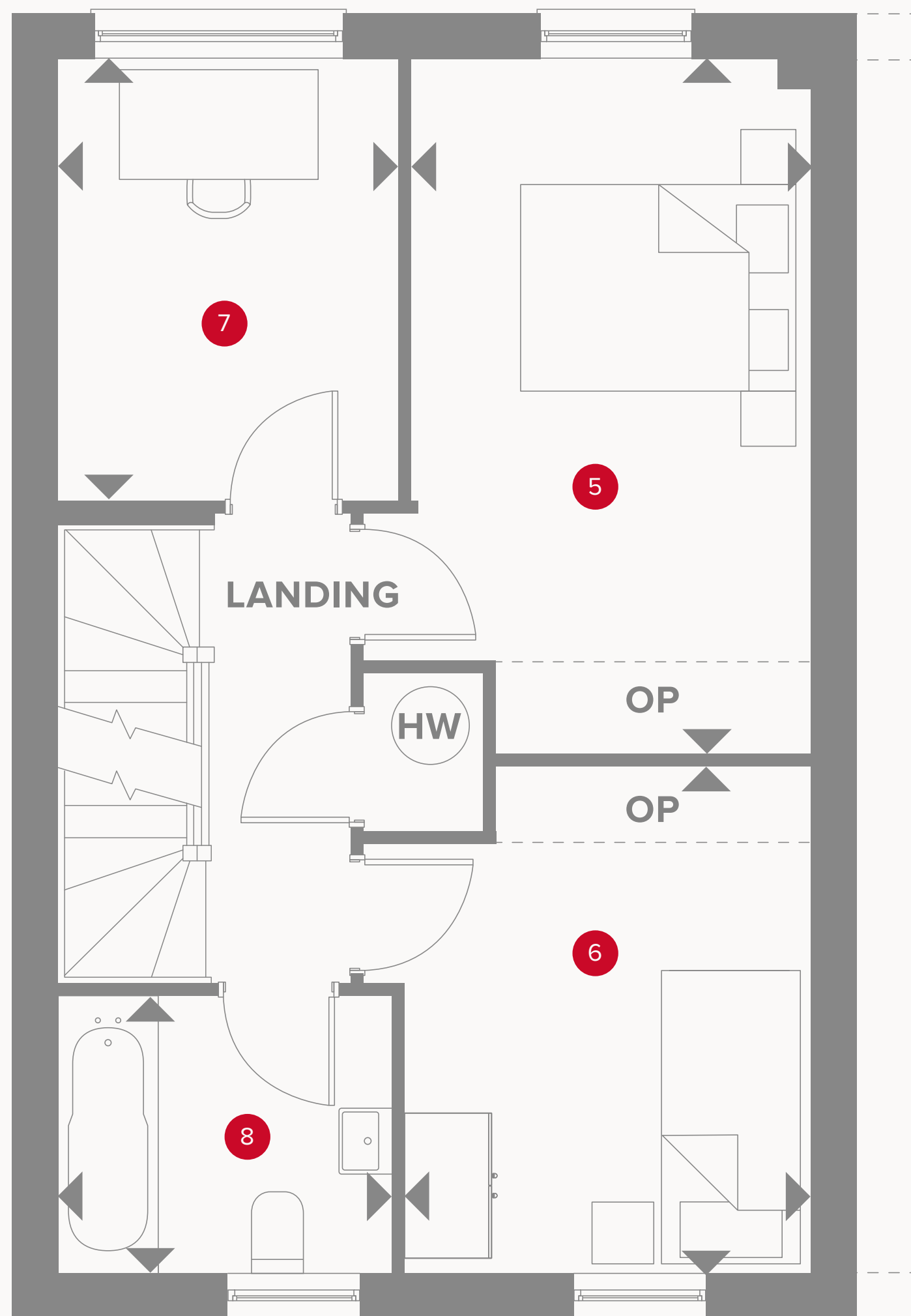
1	Kitchen/Dining	15'6" x 9'7"	4.73 x 2.93 m
2	Lounge	16'8" x 11'3"	5.09 x 3.43 m
3	Cloaks	6'2" x 3'2"	1.87 x 0.96 m
4	Laundry	3'1" x 2'9"	0.94 x 0.84 m



## KEY

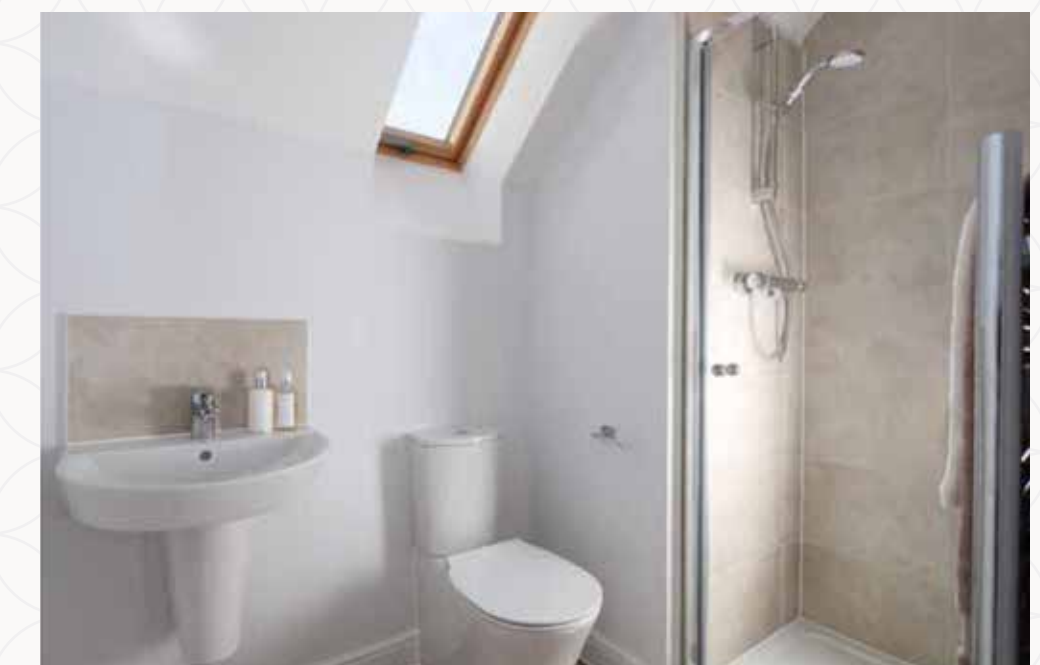
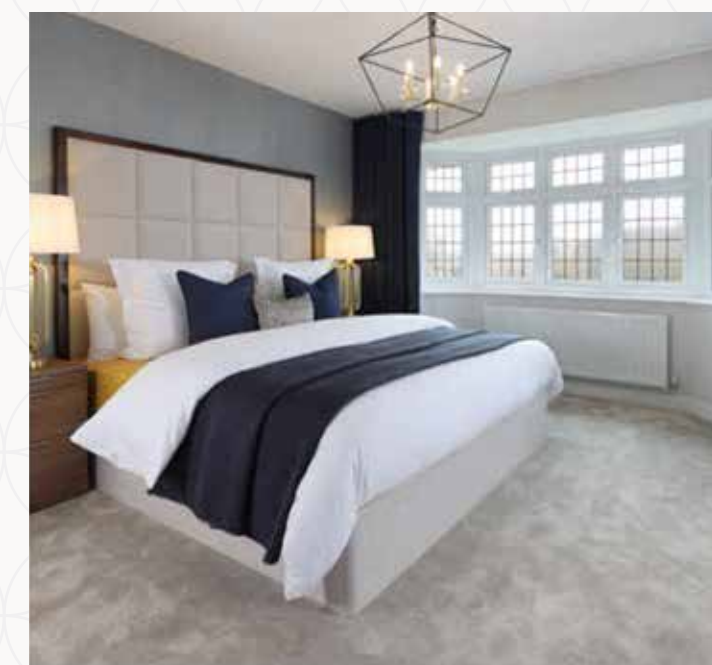
 Hob  
 Fridge/freezer  
 Dimensions start

 Storage cupboard  
 Washing machine space  
 Dish washer space



# THE CHARTHAM FIRST FLOOR

5	Bedroom 2	15'6" x 8'10"	4.73 x 2.70 m
6	Bedroom 3	11'3" x 9'0"	3.43 x 2.75 m
7	Bedroom 4/Study	9'10" x 7'7"	3.00 x 2.30 m
8	Bathroom	9'10" x 7'7"	3.00 x 2.30 m



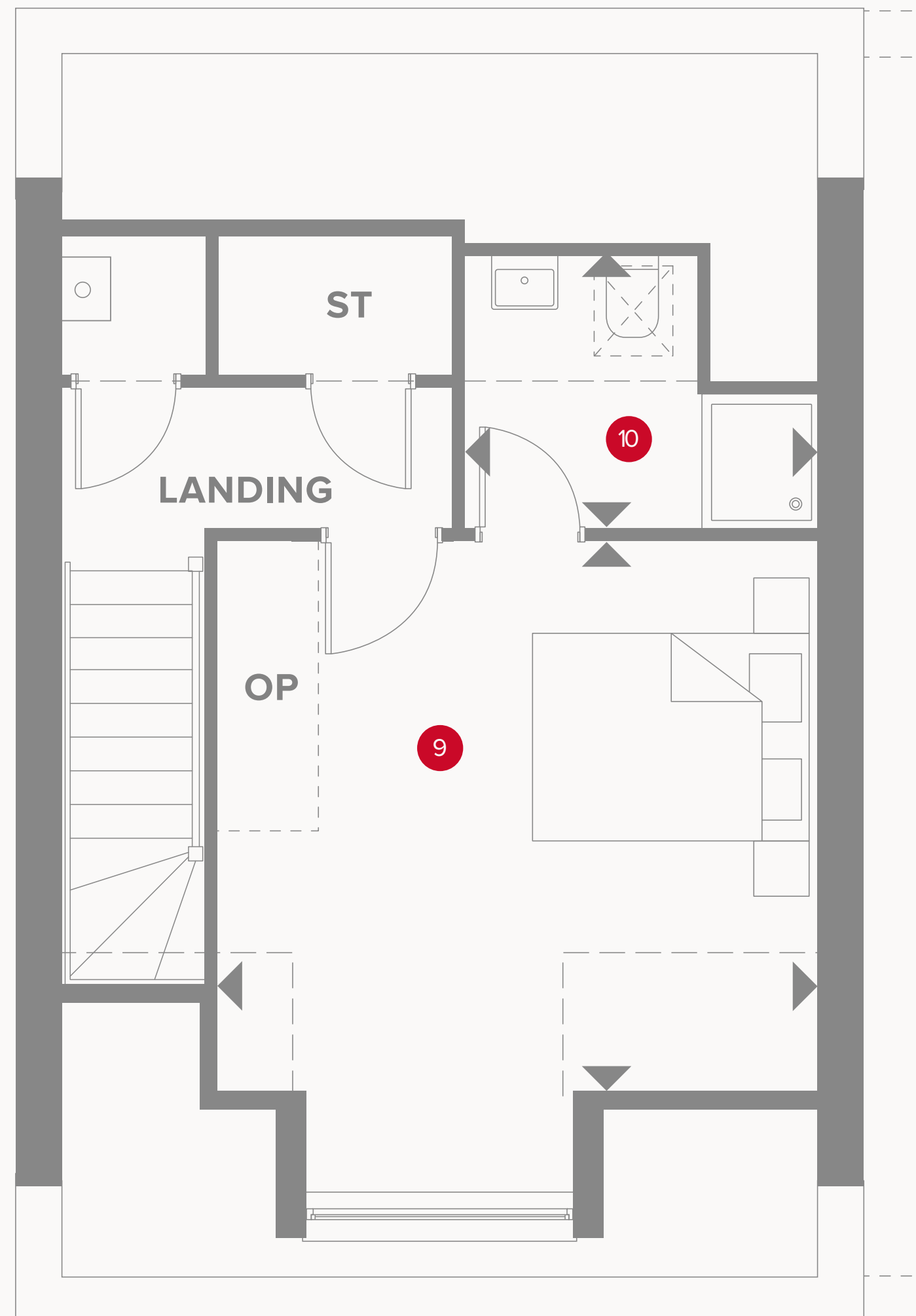
## KEY

- ◀ Dimensions start
- HW Hot water cylinder
- OP Optional Wardrobe



# THE CHARTHAM SECOND FLOOR

9	Bedroom 1	12'4" x 13'1"	3.75 x 4.00 m
0	En-suite	7'10" x 6'0"	2.38 x 1.83 m



Customers should note this illustration is an example of the Chartham house type. All dimensions indicated are approximate and the furniture layout is for illustrative purposes only. Homes may be 'handed' (mirror image) versions of the illustrations, and may be detached, semi-detached or terraced. Materials used may differ from plot to plot including render and roof tile colours. Detailed plans and specifications are available for inspection for each plot at our Customer Experience Suite or Sales Centre during working hours and customers must check their individual specifications prior to making a reservation. Please note that the specification show in this plan may include optional upgrades from standard specification. Please speak with your Sales Consultant or visit MyRedrow for more information.

**KEY**

- ← Dimensions start
- ST** Storage cupboard
- OP** Optional Wardrobe