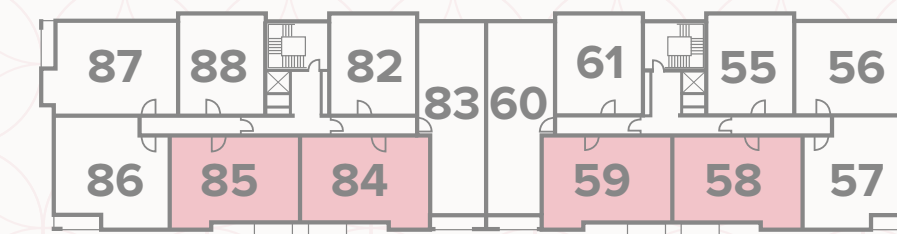
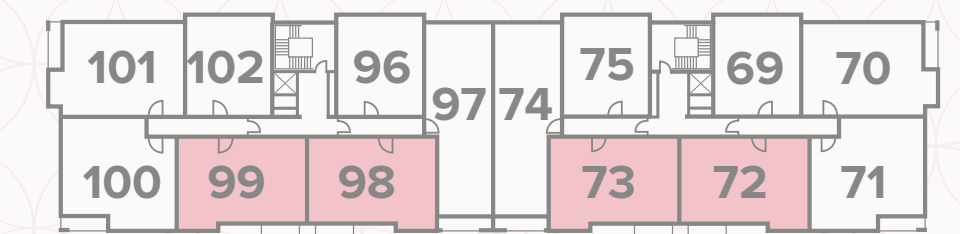


# APARTMENT TYPE D

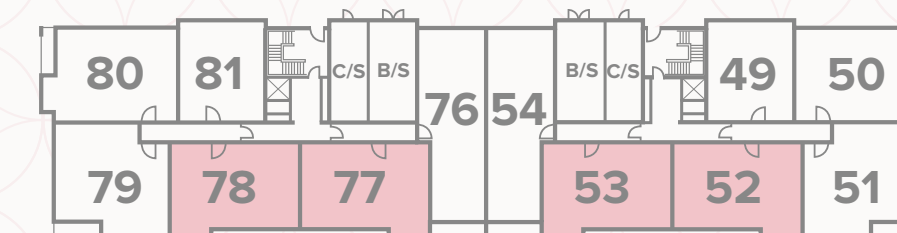
1	Kitchen/Lounge/Dining	12'11" x 22'4"	3.93 x 6.80 m
2	Bedroom 1	10'1" x 11'4"	3.05 x 3.44 m
3	En-suite	6'7" x 6'0"	2.00 x 1.82 m
4	Bedroom 2	10'1" x 11'11"	3.07 x 3.62 m
5	Bathroom	10'7" x 6'5"	3.21 x 1.96 m



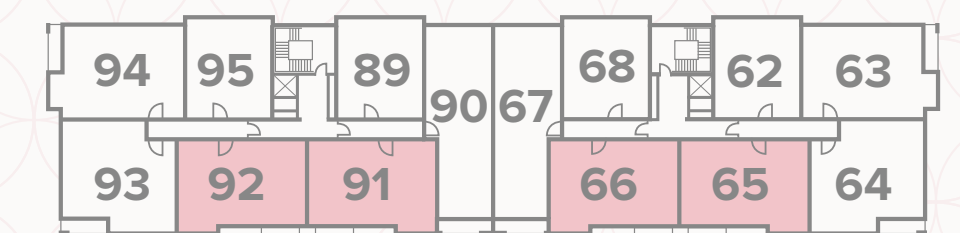
First Floor



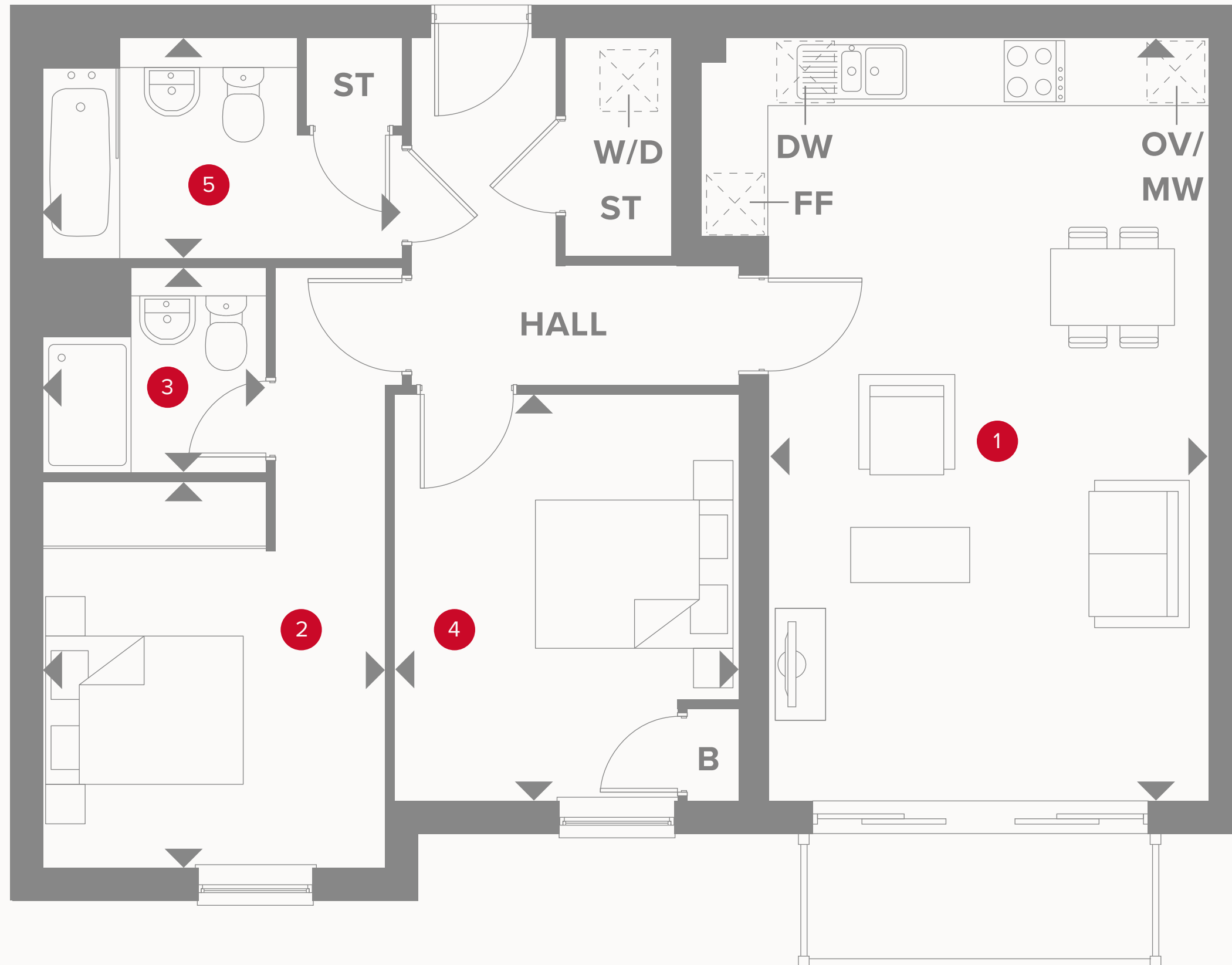
Third Floor





Ground Floor



Second Floor



## KEY

-  Hob
- OV/MW** Oven/Microwave
- FF** Fridge/freezer
-  Dimensions start

- ST** Storage cupboard
- W/D** Washer/dryer
- DW** Dishwasher
- B** Boiler

- C/S** Cycle Store
- B/S** Bin Store



Customers should note this illustration is an example of The Mill Apartments Edinburgh House apartment types. All dimensions indicated are approximate and the furniture layout is for illustrative purposes only. Homes may be 'handed' (mirror image) versions of the illustrations, and may be apartments. Materials used may differ from plot to plot including render and roof tile colours. Detailed plans and specifications are available for inspection for each plot at our Customer Experience Suite or Sales Centre during working hours and customers must check their individual specifications prior to making a reservation. Please note that the specification show in this plan may include optional upgrades from standard specification. Please speak with your Sales Consultant or visit MyRedrow for more information.