



TAILORED

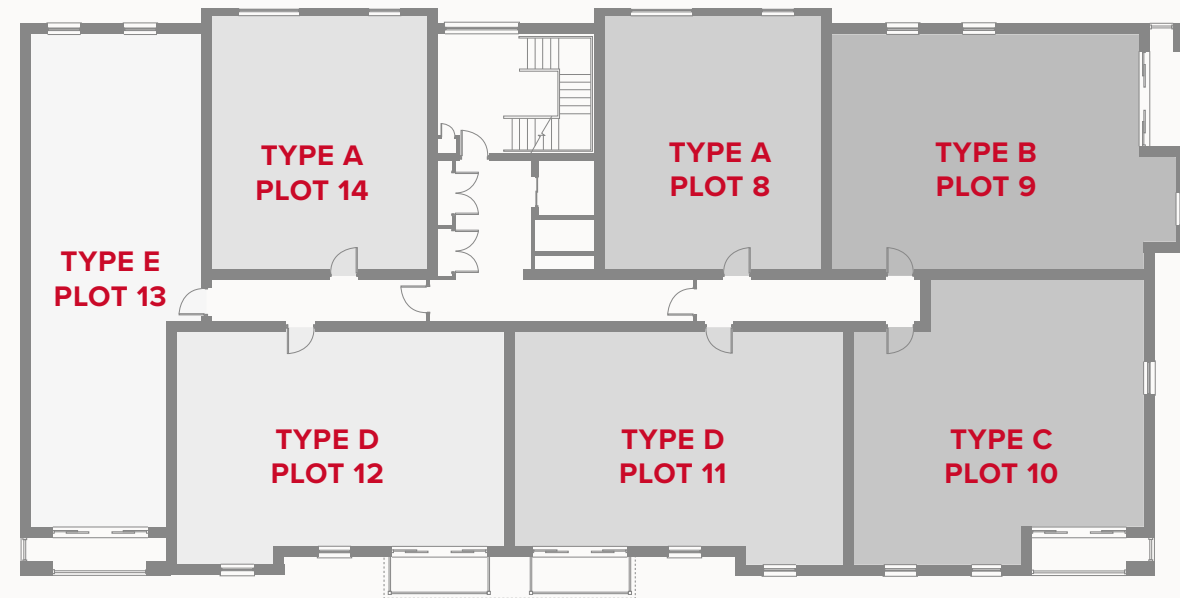
- REDROW -

BALSTON HOUSE

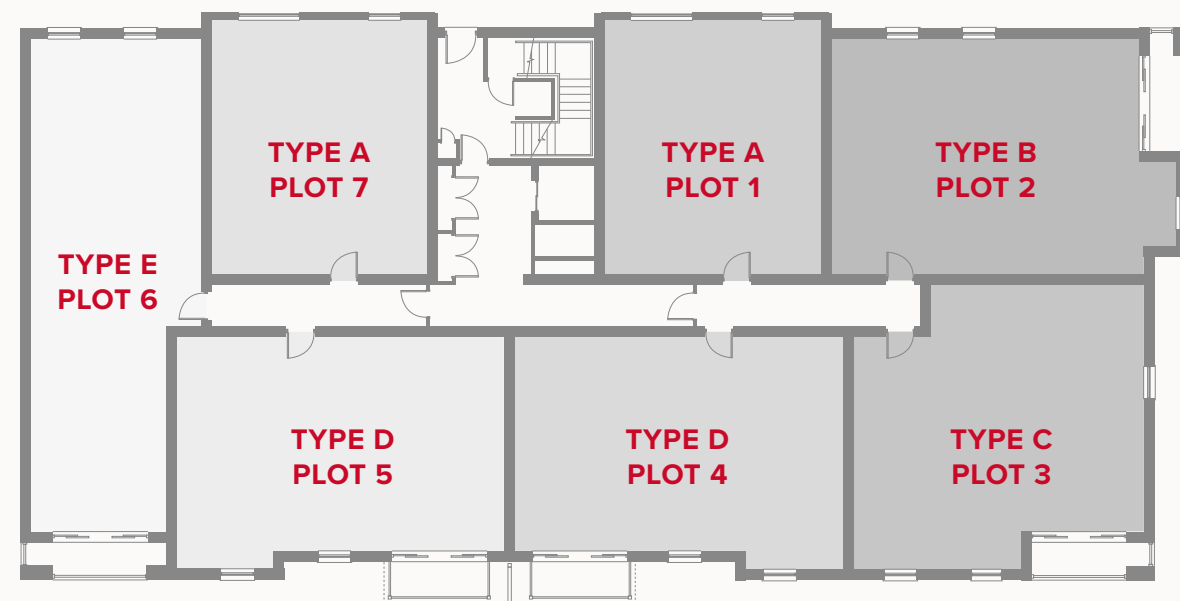
ONE & TWO BEDROOM APARTMENTS



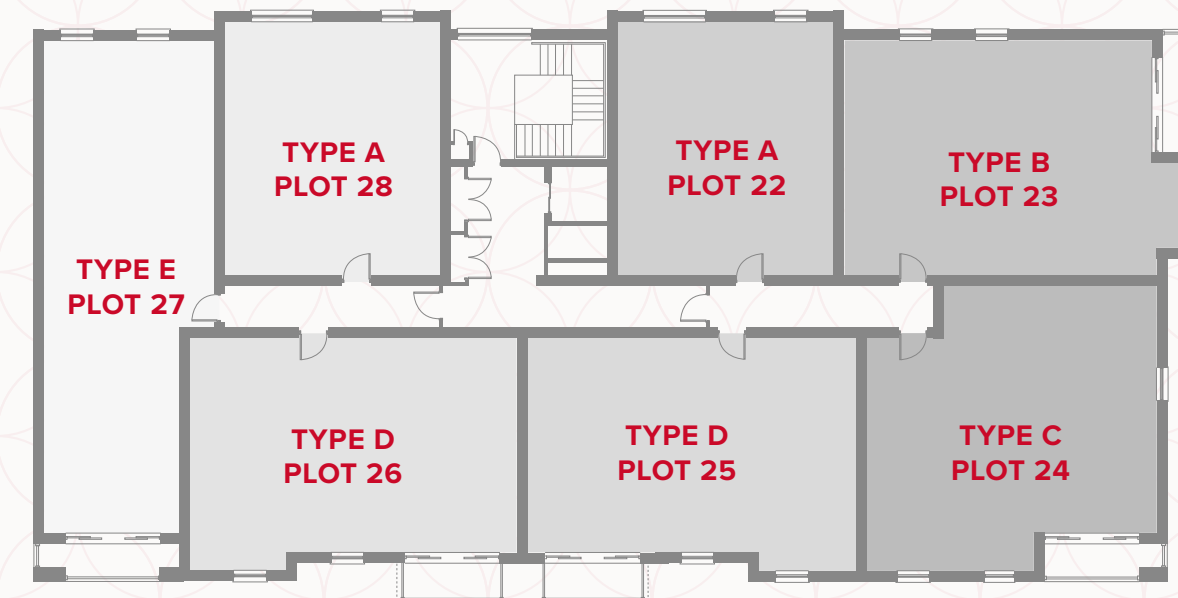
FIRST FLOOR



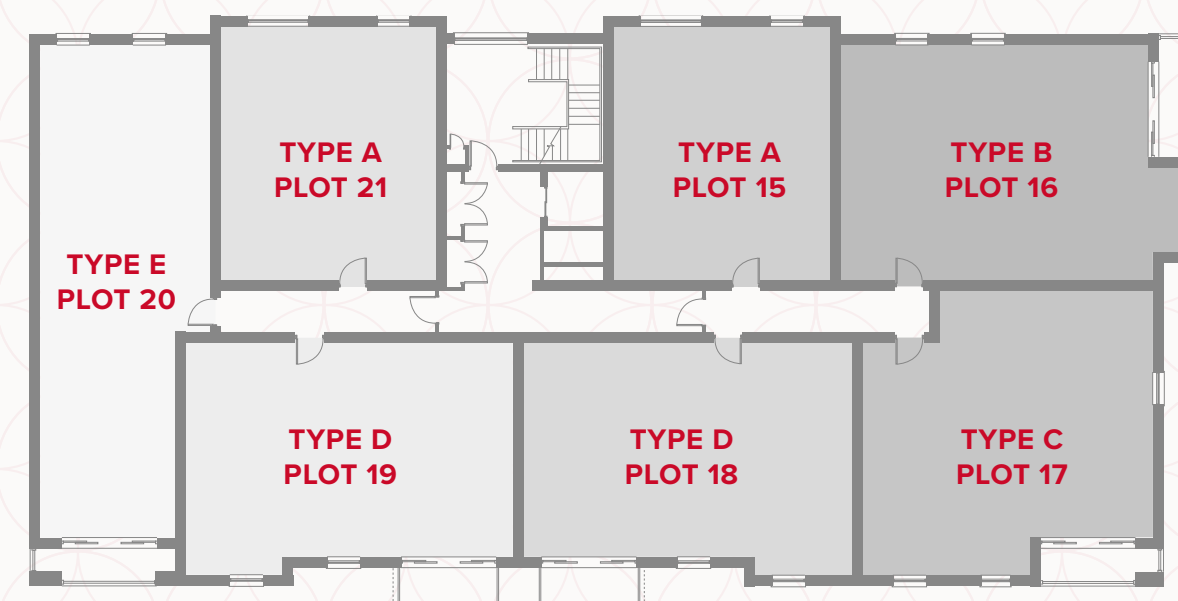
GROUND FLOOR



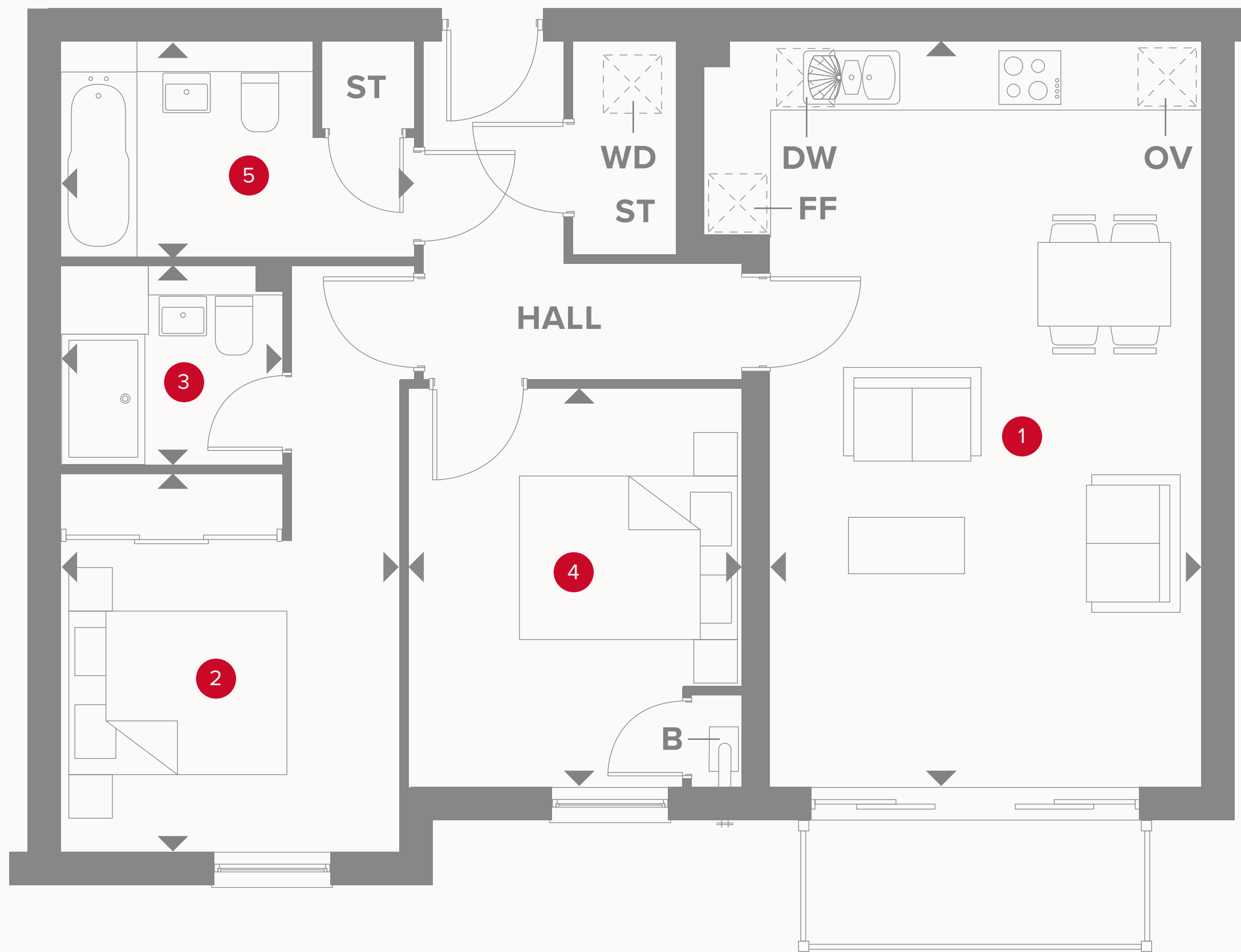
THIRD FLOOR



SECOND FLOOR

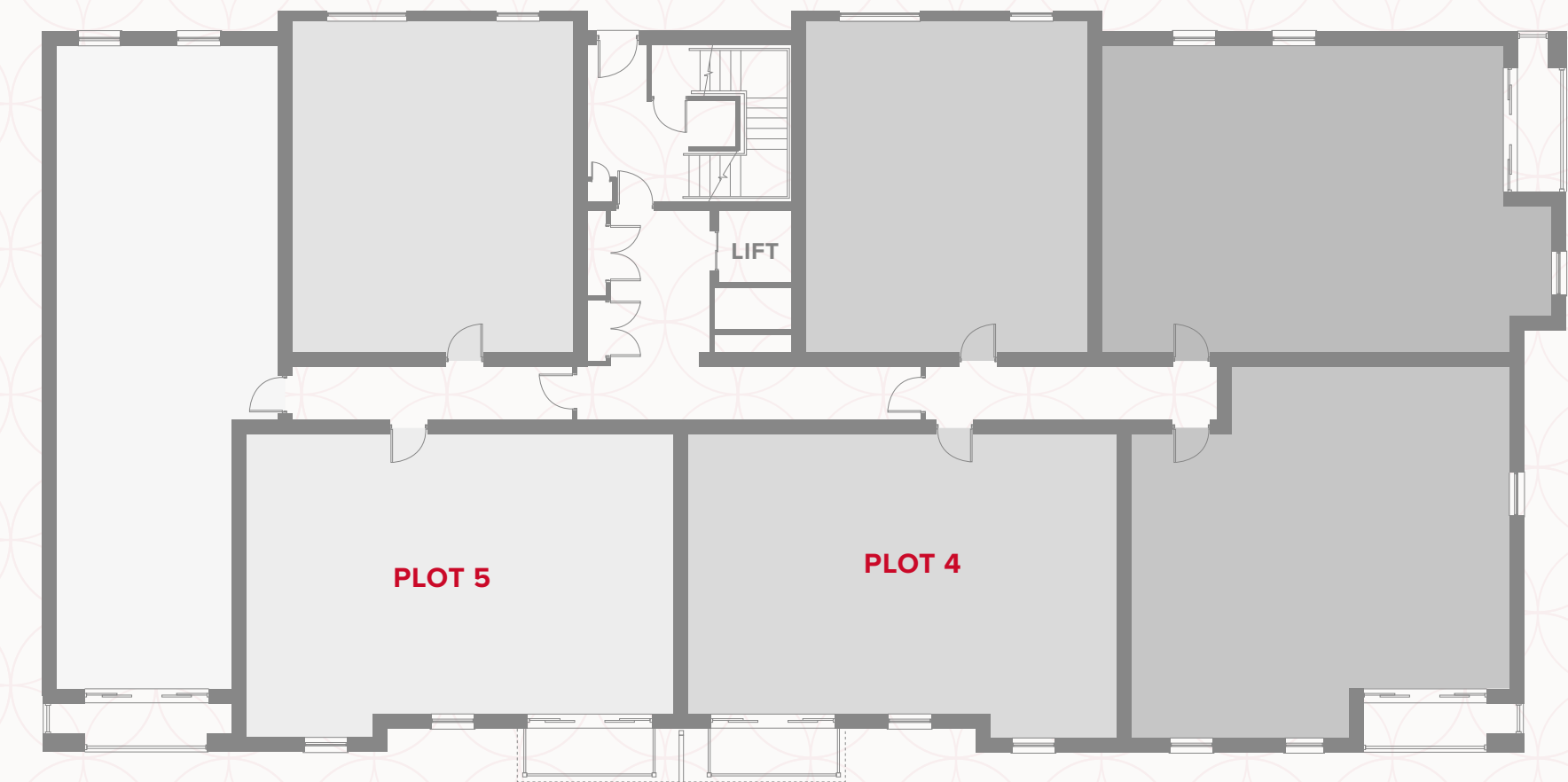


APARTMENT TYPE D



BALSTON HOUSE GROUND FLOOR

1	Kitchen/ Lounge/Dining	12'11" x 22'4"	3.93 x 6.80 m
2	Bedroom 1	10'1" x 11'4"	3.05 x 3.44 m
3	En-Suite	6'7" x 6'0"	2.00 x 1.82 m
4	Bedroom 2	10'1" x 11'11"	3.07 x 3.62 m
5	Bathroom	10'7" x 6'5"	3.21 x 1.96 m

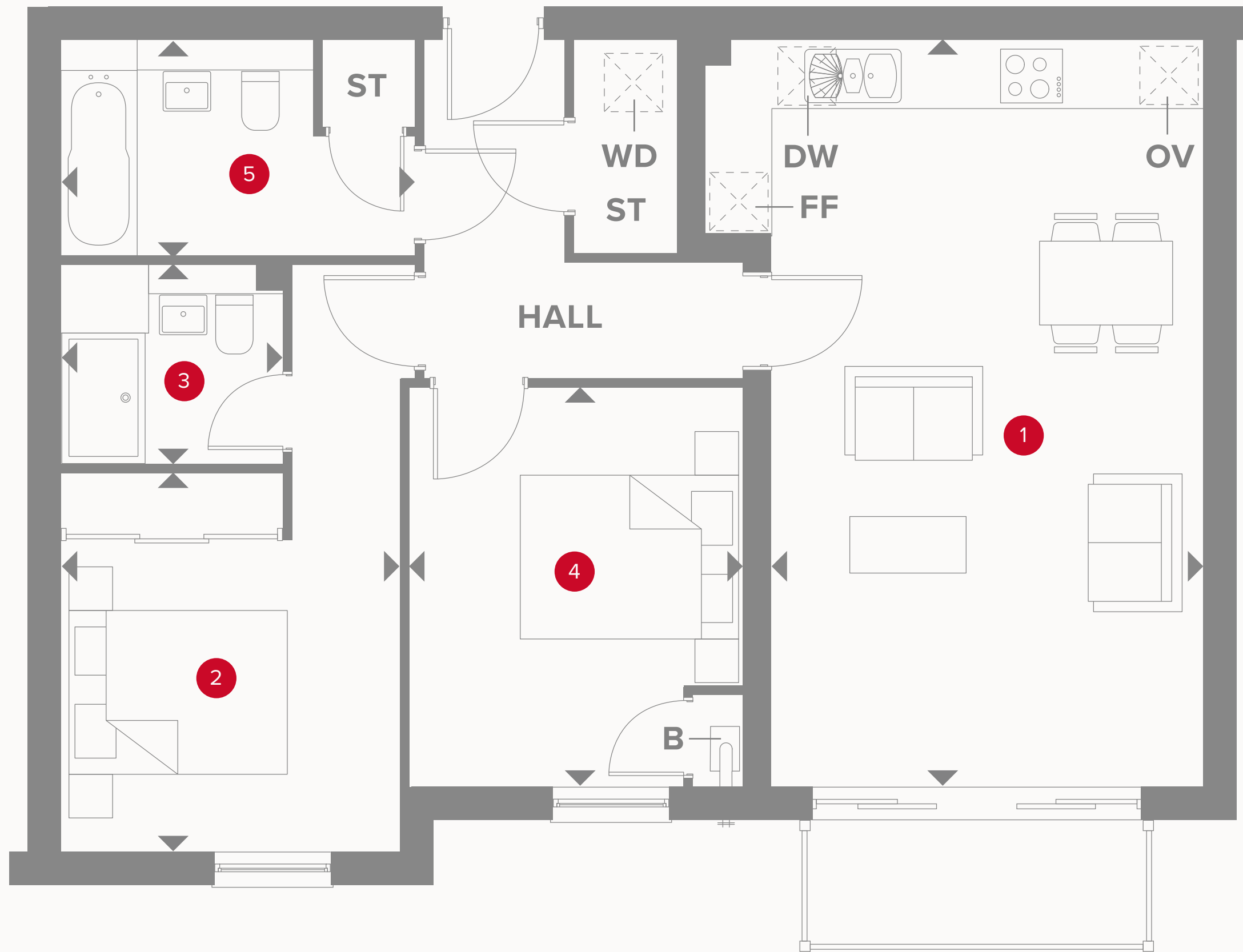


KEY

	Hob		Dimensions start
OV	Oven	WD	Washing Dryer
FF	Fridge/freezer	DW	Dishwasher
ST	Storage cupboard	B	Boiler

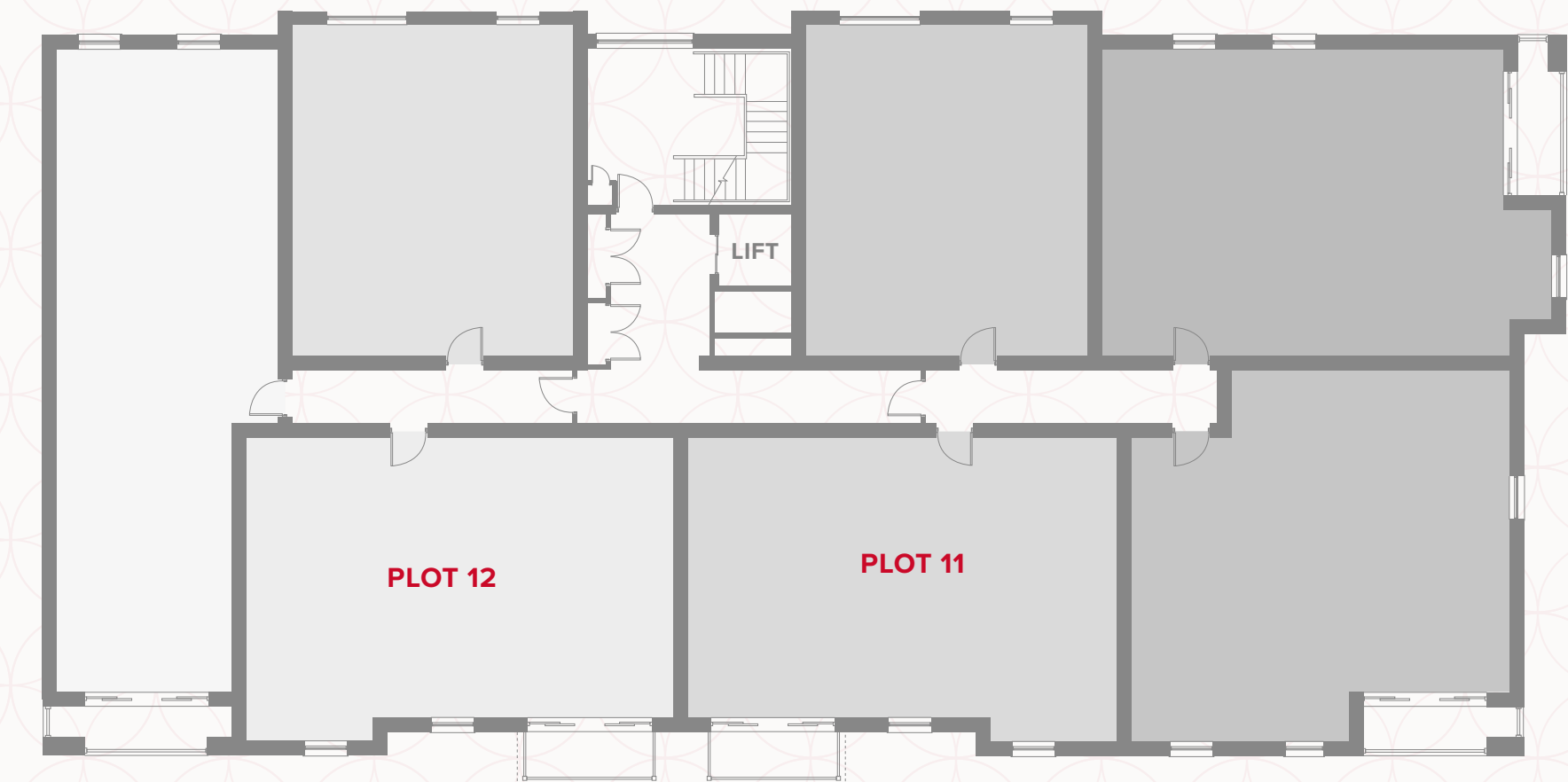
Customers should note this illustration is an example of the Balston House apartments. All dimensions indicated are approximate and the furniture layout is for illustrative purposes only. Homes may be 'handed' (mirror image) versions of the illustrations. Materials used may differ from plot to plot including render and roof tile colours. Detailed plans and specifications are available for inspection for each plot at our Customer Experience Suite during working hours and customers must check their individual specifications prior to making a reservation. All wardrobes are subject to site specification. Please see Sales Consultant for further details.

APARTMENT TYPE D



BALSTON HOUSE FIRST FLOOR

1	Kitchen/ Lounge/Dining	12'11" x 22'4"	3.93 x 6.80 m
2	Bedroom 1	10'1" x 11'4"	3.05 x 3.44 m
3	En-Suite	6'7" x 6'0"	2.00 x 1.82 m
4	Bedroom 2	10'1" x 11'11"	3.07 x 3.62 m
5	Bathroom	10'7" x 6'5"	3.21 x 1.96 m

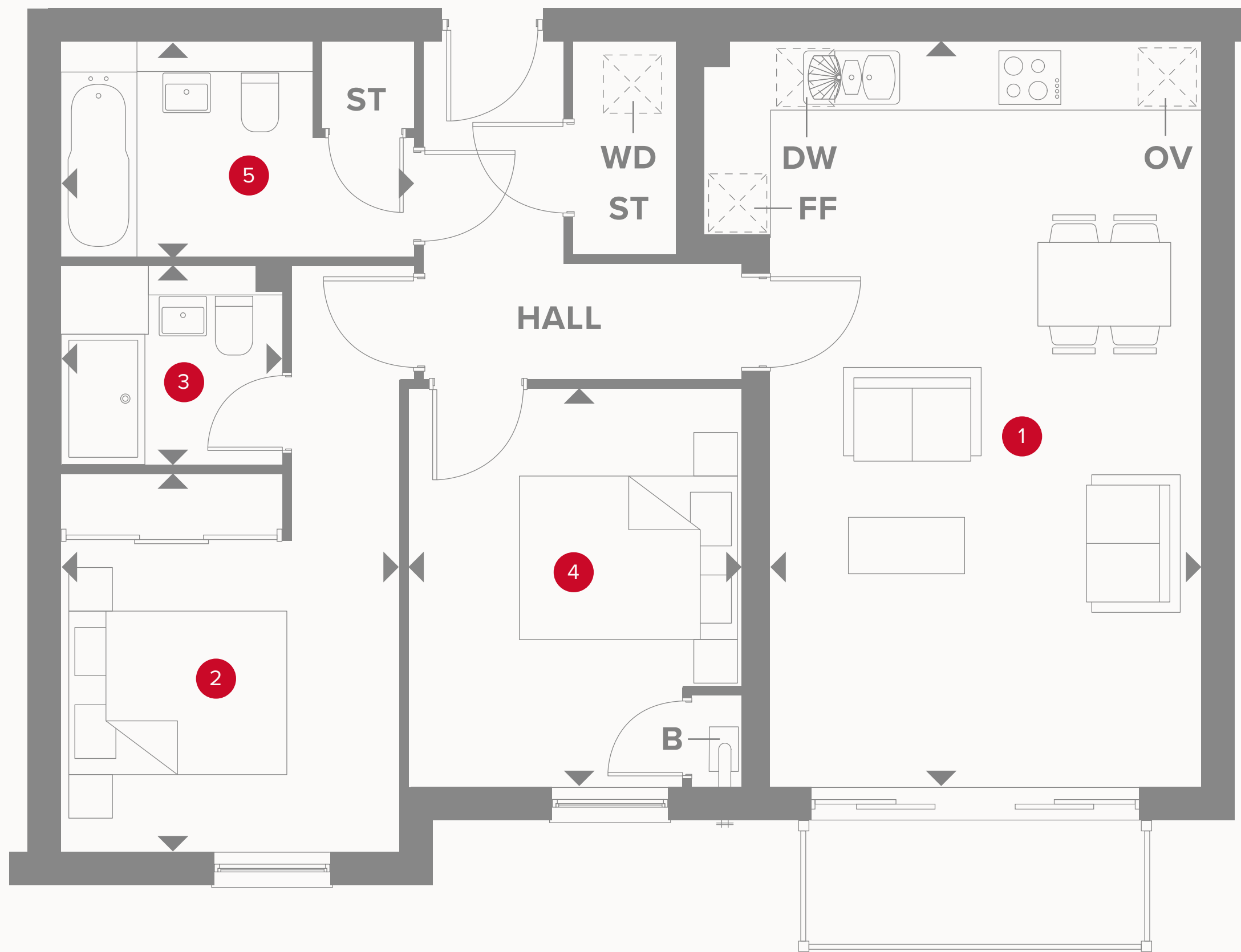


KEY

	Hob		Dimensions start
OV	Oven	WD	Washing Dryer
FF	Fridge/freezer	DW	Dishwasher
ST	Storage cupboard	B	Boiler

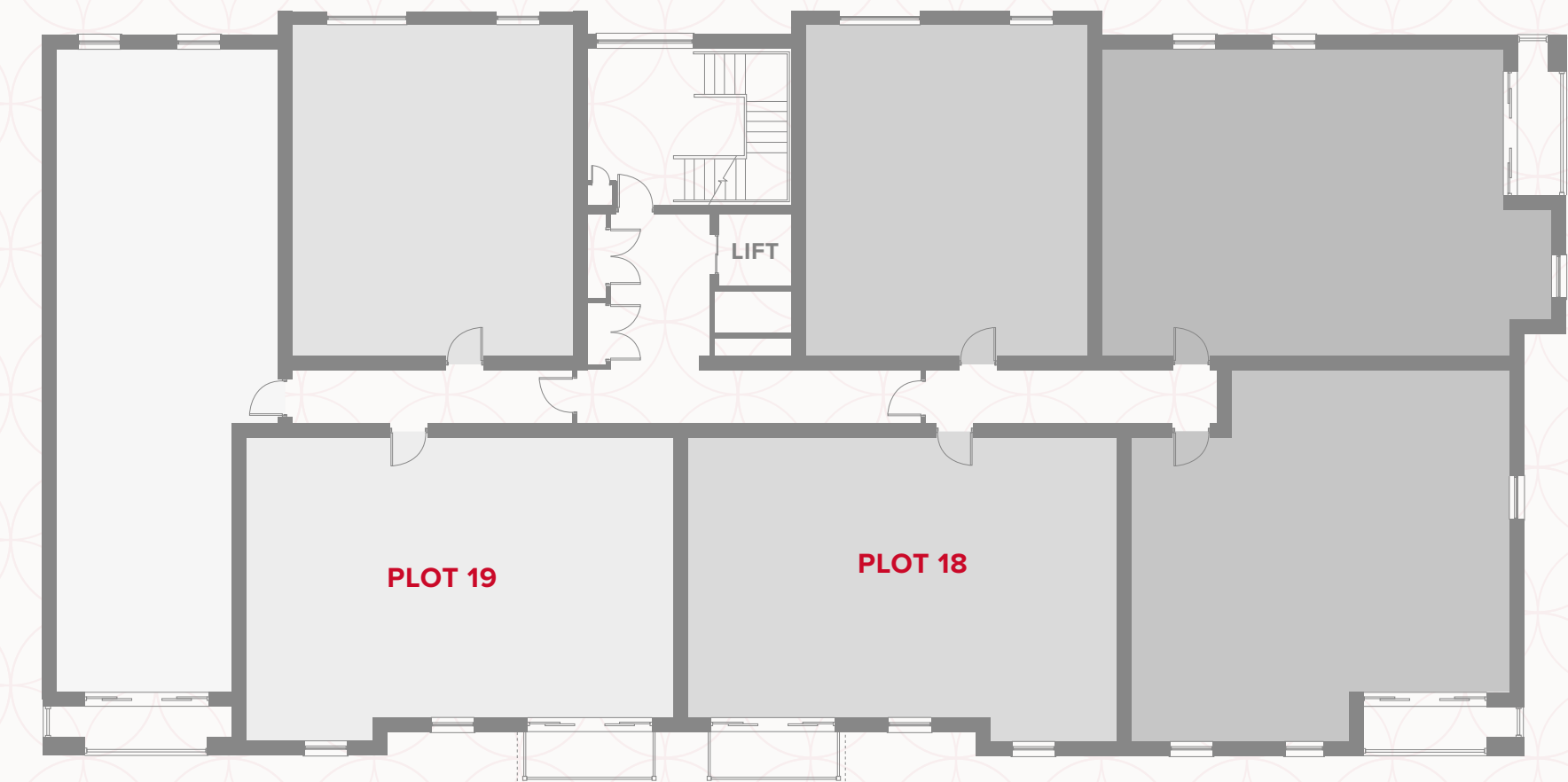
Customers should note this illustration is an example of the Balston House apartments. All dimensions indicated are approximate and the furniture layout is for illustrative purposes only. Homes may be 'handed' (mirror image) versions of the illustrations. Materials used may differ from plot to plot including render and roof tile colours. Detailed plans and specifications are available for inspection for each plot at our Customer Experience Suite during working hours and customers must check their individual specifications prior to making a reservation. All wardrobes are subject to site specification. Please see Sales Consultant for further details.

APARTMENT TYPE D



BALSTON HOUSE SECOND FLOOR

1	Kitchen/ Lounge/Dining	12'11" x 22'4"	3.93 x 6.80 m
2	Bedroom 1	10'1" x 11'4"	3.05 x 3.44 m
3	En-Suite	6'7" x 6'0"	2.00 x 1.82 m
4	Bedroom 2	10'1" x 11'11"	3.07 x 3.62 m
5	Bathroom	10'7" x 6'5"	3.21 x 1.96 m

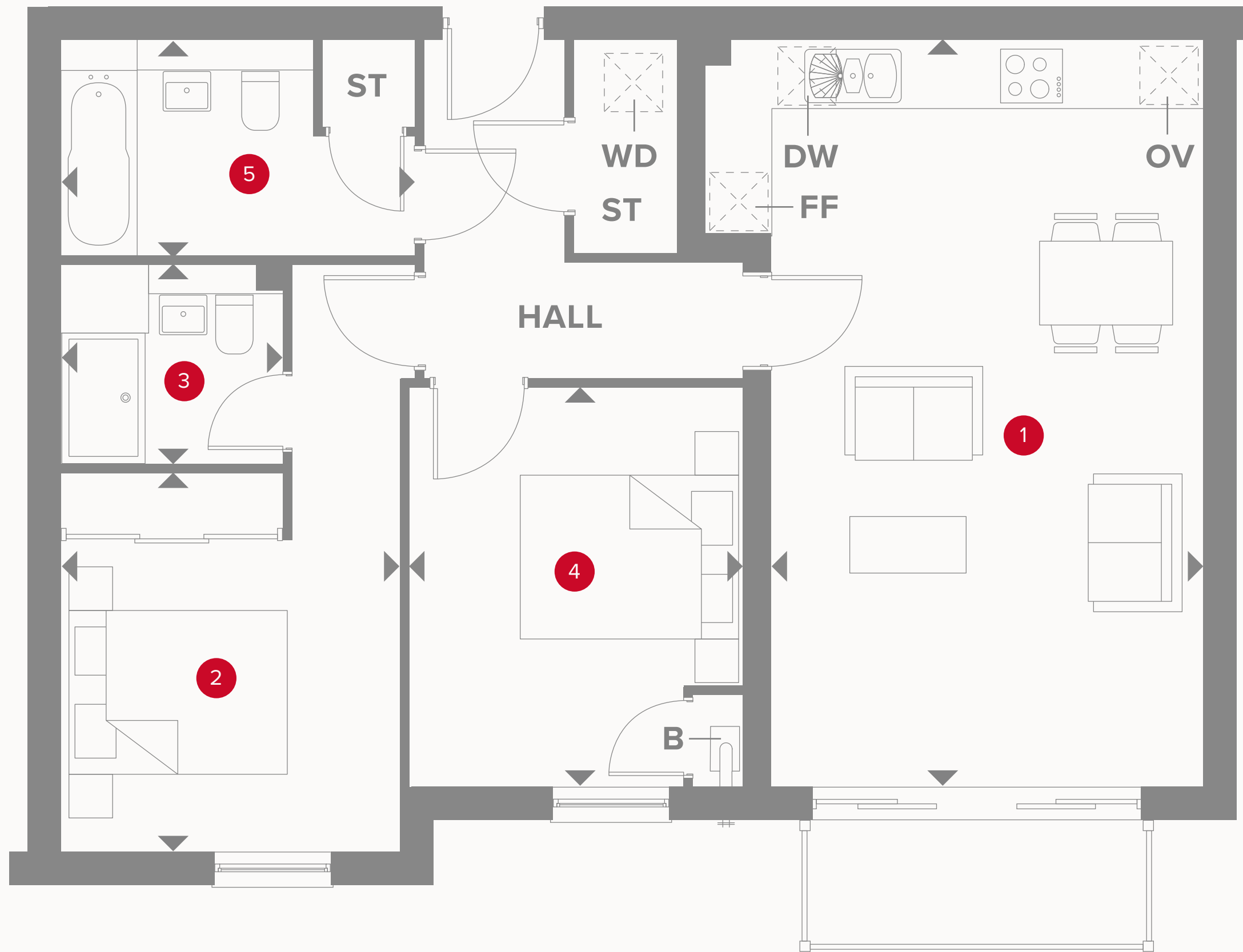


KEY

	Hob		Dimensions start
OV	Oven	WD	Washing Dryer
FF	Fridge/freezer	DW	Dishwasher
ST	Storage cupboard	B	Boiler

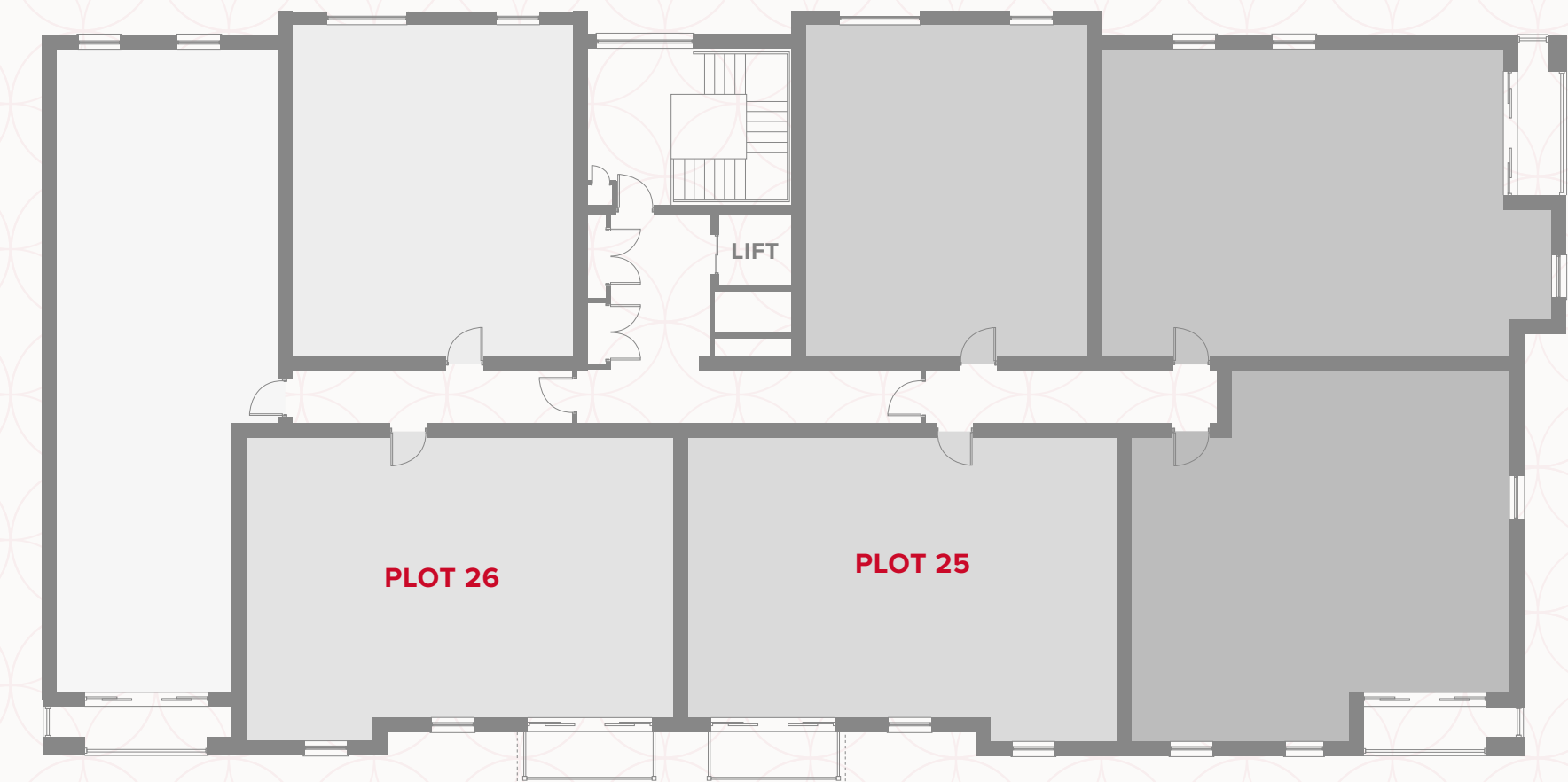
Customers should note this illustration is an example of the Balston House apartments. All dimensions indicated are approximate and the furniture layout is for illustrative purposes only. Homes may be 'handed' (mirror image) versions of the illustrations. Materials used may differ from plot to plot including render and roof tile colours. Detailed plans and specifications are available for inspection for each plot at our Customer Experience Suite during working hours and customers must check their individual specifications prior to making a reservation. All wardrobes are subject to site specification. Please see Sales Consultant for further details.

APARTMENT TYPE D



BALSTON HOUSE THIRD FLOOR

1	Kitchen/ Lounge/Dining	12'11" x 22'4"	3.93 x 6.80 m
2	Bedroom 1	10'1" x 11'4"	3.05 x 3.44 m
3	En-Suite	6'7" x 6'0"	2.00 x 1.82 m
4	Bedroom 2	10'1" x 11'11"	3.07 x 3.62 m
5	Bathroom	10'7" x 6'5"	3.21 x 1.96 m



KEY

	Hob		Dimensions start
OV	Oven	WD	Washing Dryer
FF	Fridge/freezer	DW	Dishwasher
ST	Storage cupboard	B	Boiler

Customers should note this illustration is an example of the Balston House apartments. All dimensions indicated are approximate and the furniture layout is for illustrative purposes only. Homes may be 'handed' (mirror image) versions of the illustrations. Materials used may differ from plot to plot including render and roof tile colours. Detailed plans and specifications are available for inspection for each plot at our Customer Experience Suite during working hours and customers must check their individual specifications prior to making a reservation. All wardrobes are subject to site specification. Please see Sales Consultant for further details.

**CONSUMER
CODE FOR
HOME BUILDERS**
www.consumercode.co.uk