



**INSPIRED**

- REDROW -

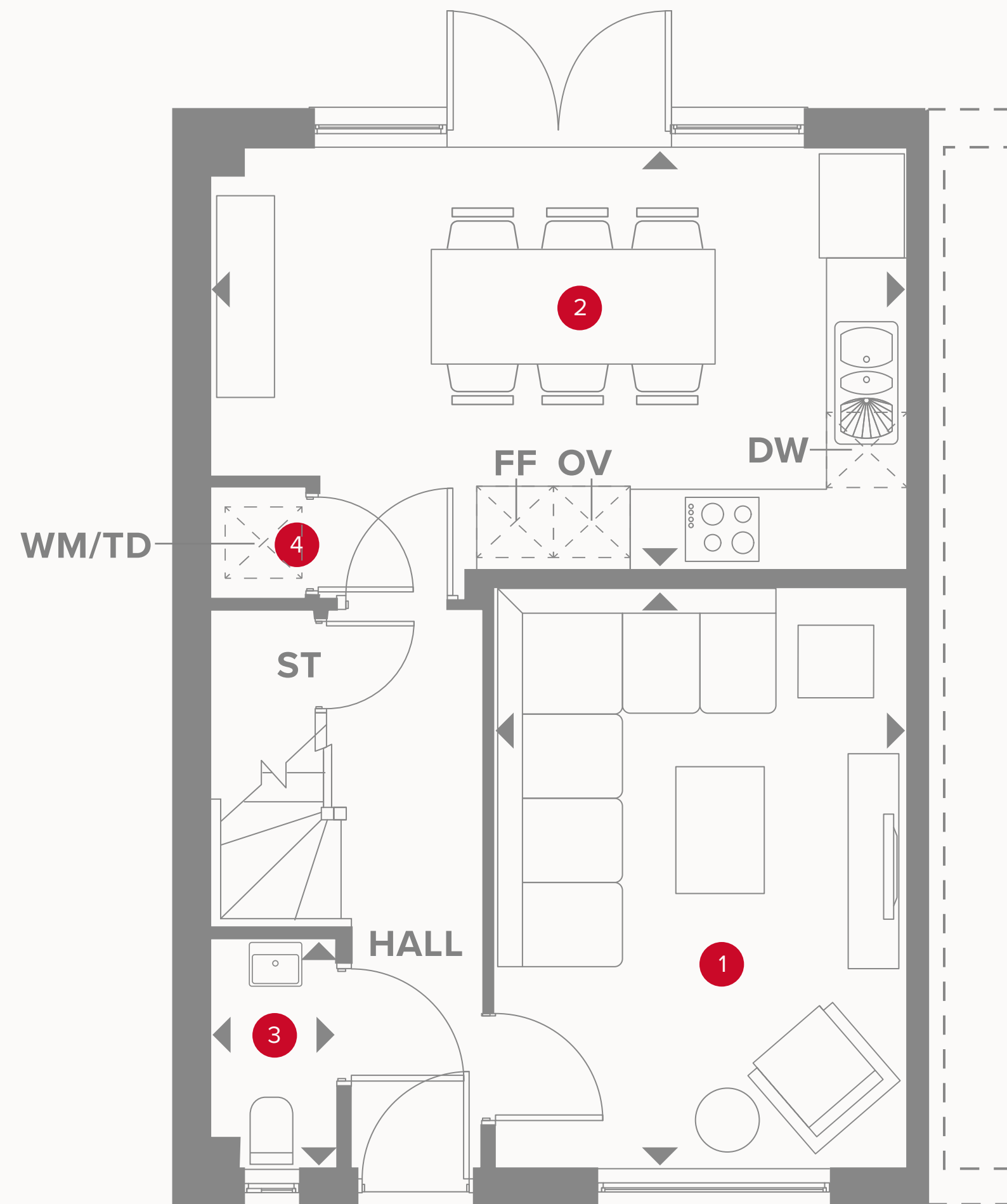
# **THE CLAREMONT SEMI**

FOUR BEDROOM HOME





# THE CLAREMONT SEMI GROUND FLOOR



1	Lounge	14'11" x 10'7"	4.55 x 3.23 m
2	Kitchen/ Dining	17'10" x 10'11"	5.43 x 3.32 m
3	Cloaks	5'10" x 3'3"	1.79 x 0.98 m
4	Laundry	2'10" x 2'6"	0.87 x 0.75 m

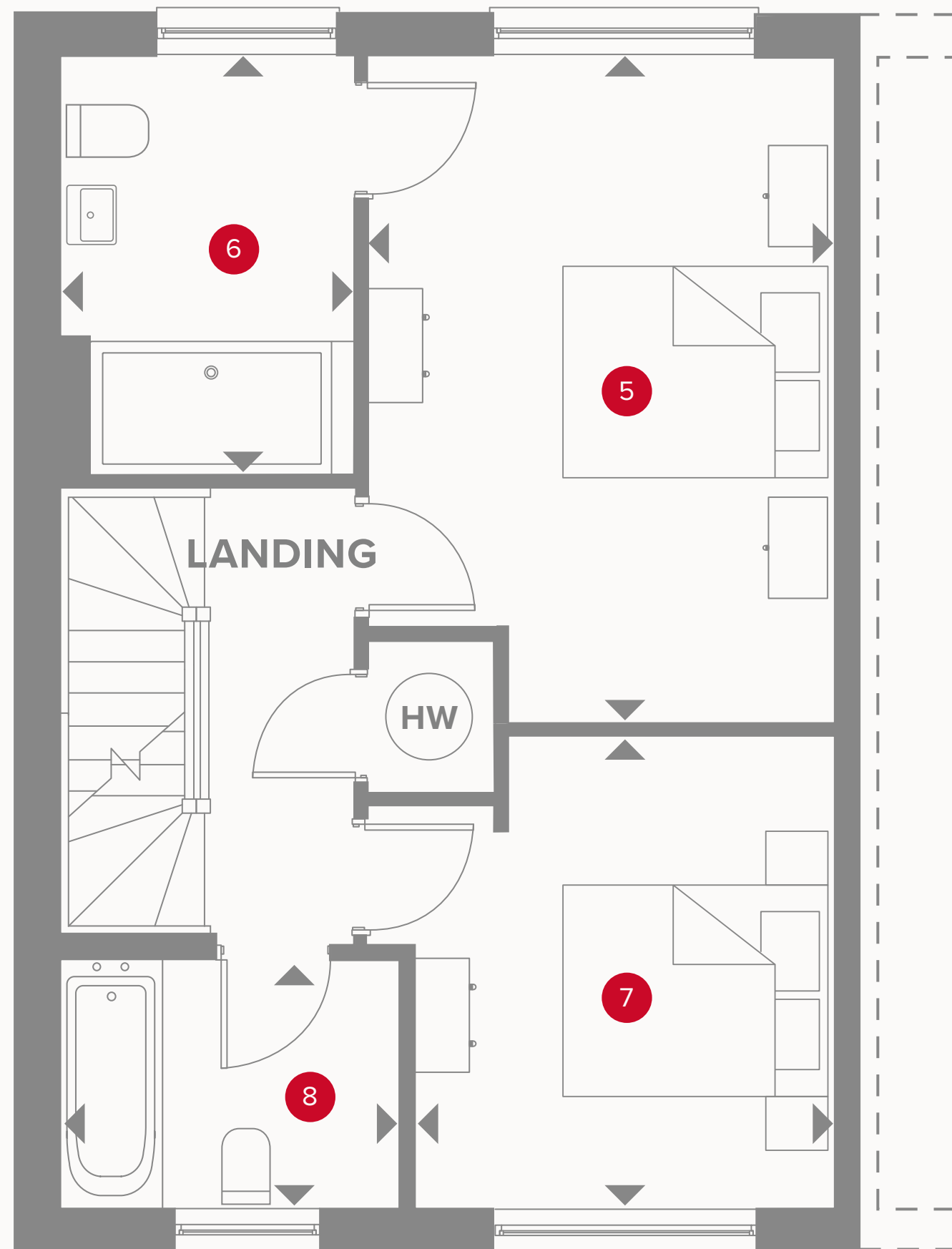


## KEY

	Hob
<b>OV</b>	Oven
<b>FF</b>	Fridge/freezer
<b>TD</b>	Tumble dryer space

	Dimensions start
<b>ST</b>	Storage cupboard
<b>WM</b>	Washing machine space
<b>DW</b>	Dish washer space

# THE CLAREMONT SEMI FIRST FLOOR



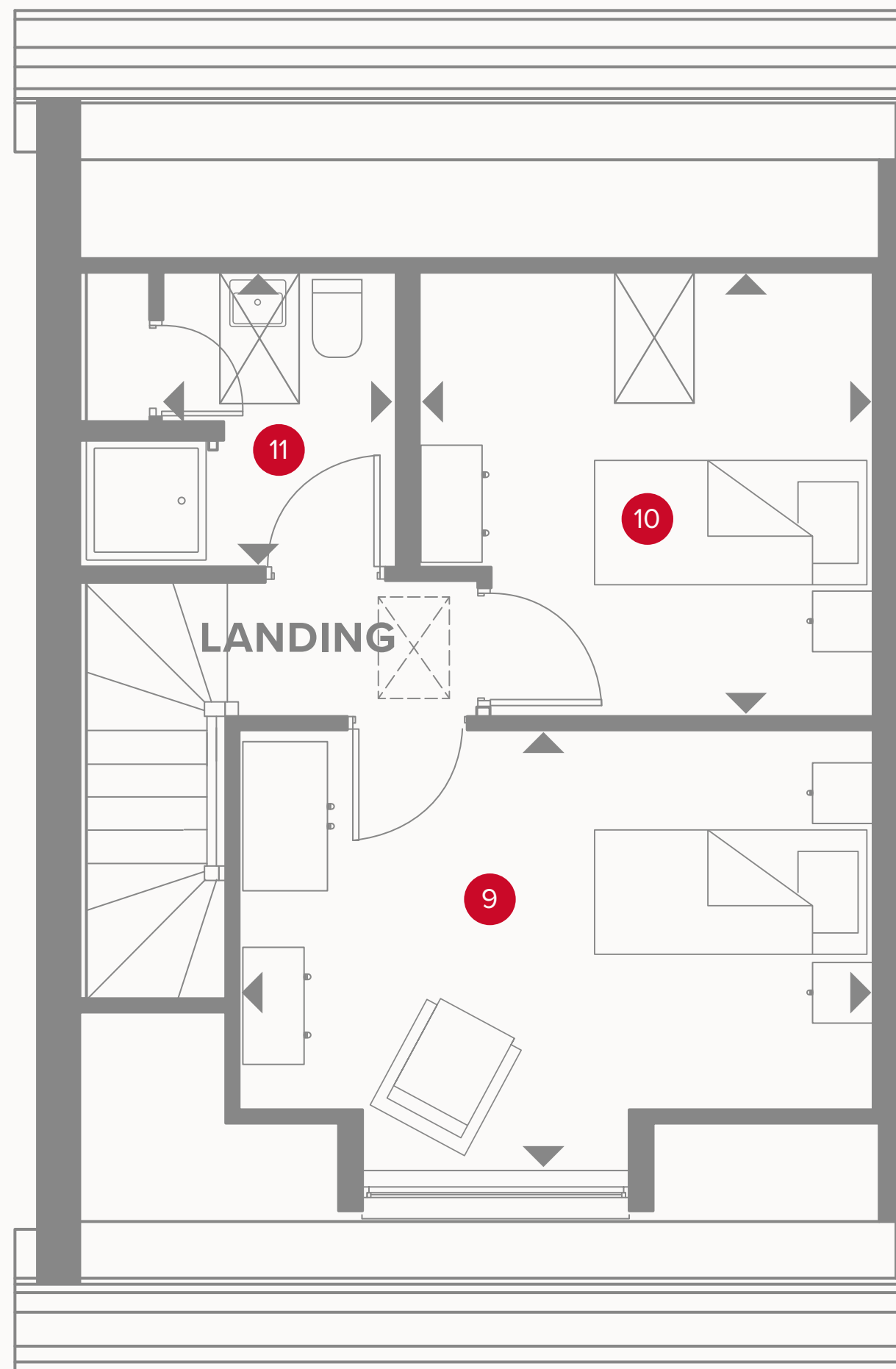
5	Bedroom 1	15'3" x 10'10"	4.66 x 3.29 m
6	En-suite	9'8" x 6'9"	2.94 x 2.05 m
7	Bedroom 2	10'9" x 9'9"	3.27 x 2.97 m
8	Bathroom 1	7'10" x 5'7"	2.38 x 1.71 m



## KEY

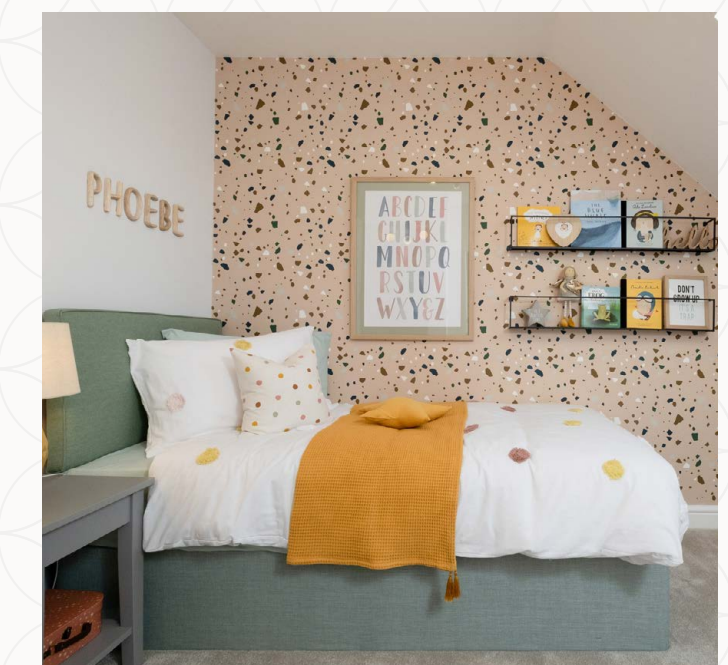
- ◀ Dimensions start
- HW Hot Water





# THE CLAREMONT SEMI SECOND FLOOR

9	Bedroom 3	14'2" x 10'0"	4.31 x 3.06 m
10	Bedroom 4	10'2" x 10'0"	3.09 x 3.04 m
11	Bathroom 2	7'1" x 6'8"	2.15 x 2.02 m



## KEY

← Dimensions start

**CONSUMER  
CODE FOR  
HOME BUILDERS**  
[www.consumercode.co.uk](http://www.consumercode.co.uk)

Customers should note this illustration is an example of the Claremont Semi house type. All dimensions indicated are approximate and the furniture layout is for illustrative purposes only. Homes may be 'handed' (mirror image) versions of the illustrations, and may be detached, semi-detached or terraced. Materials used may differ from plot to plot including render and roof tile colours. Detailed plans and specifications are available for inspection for each plot at our Sales Centre during working hours and customers must check their individual specifications prior to making a reservation.