



HERITAGE

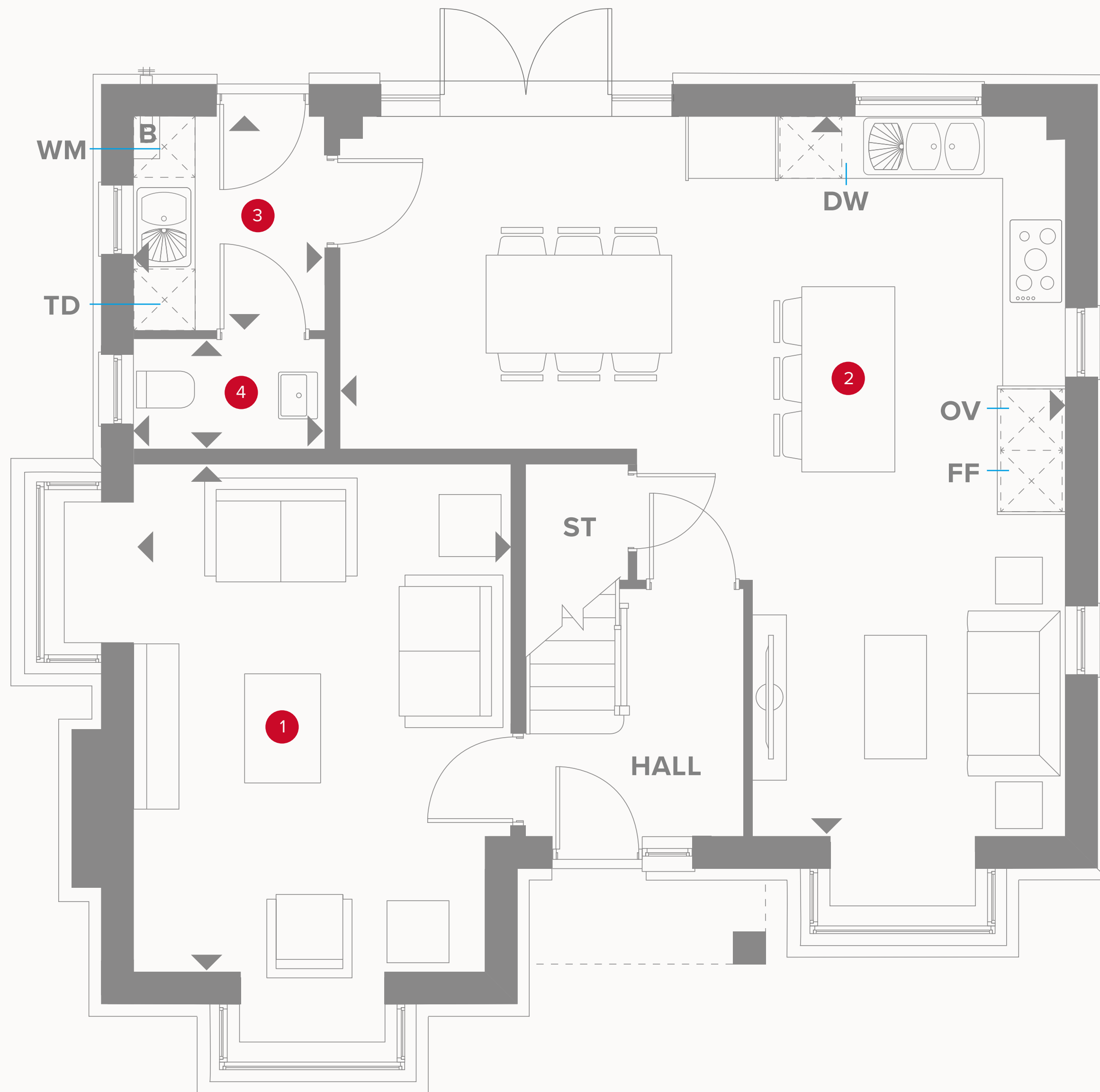
- REDROW -

THE HIGHGATE KEY/MARKER

FIVE BEDROOM HOME



THE HIGHGATE KEY/MARKER GROUND FLOOR



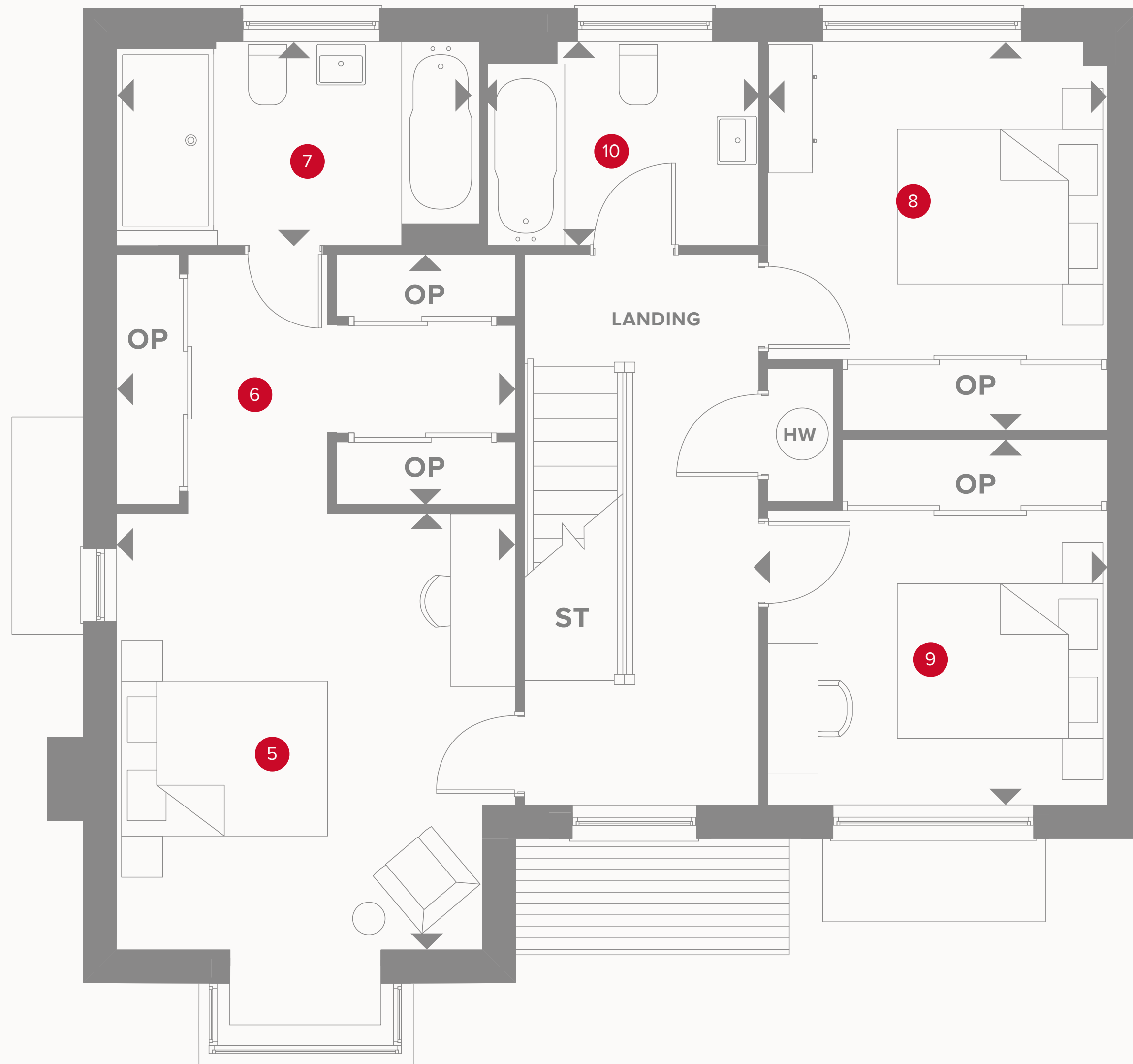
1	Lounge	16'4" x 11'8"	5.0 x 3.6 m
2	Kitchen/Dining/ Family	23'3" x 23'3"	7.1 x 7.1 m
3	Utility	6'10" x 5'10"	2.1 x 1.8 m
4	Cloaks	5'10" x 3'7"	1.8 x 1.1 m



KEY

	Hob		Dimensions start		Boiler
OV	Oven	ST	Storage cupboard	WM	Washing machine space
FF	Fridge/freezer	DW	Dish washer space		
TD	Tumble dryer space				

THE HIGHGATE KEY/MARKER FIRST FLOOR



5	Bedroom 1	13'1" x 12'1"	4.0 x 3.7 m
6	Dressing	11'9" x 7'6"	3.6 x 2.3 m
7	En-suite	10'9" x 5'2"	3.3 x 1.9 m
8	Bedroom 2	11'9" x 10'2"	3.6 x 3.1 m
9	Bedroom 3	11'1" x 10'2"	3.4 x 3.1 m
10	Bathroom	7'10" x 6'2"	2.4 x 1.9 m

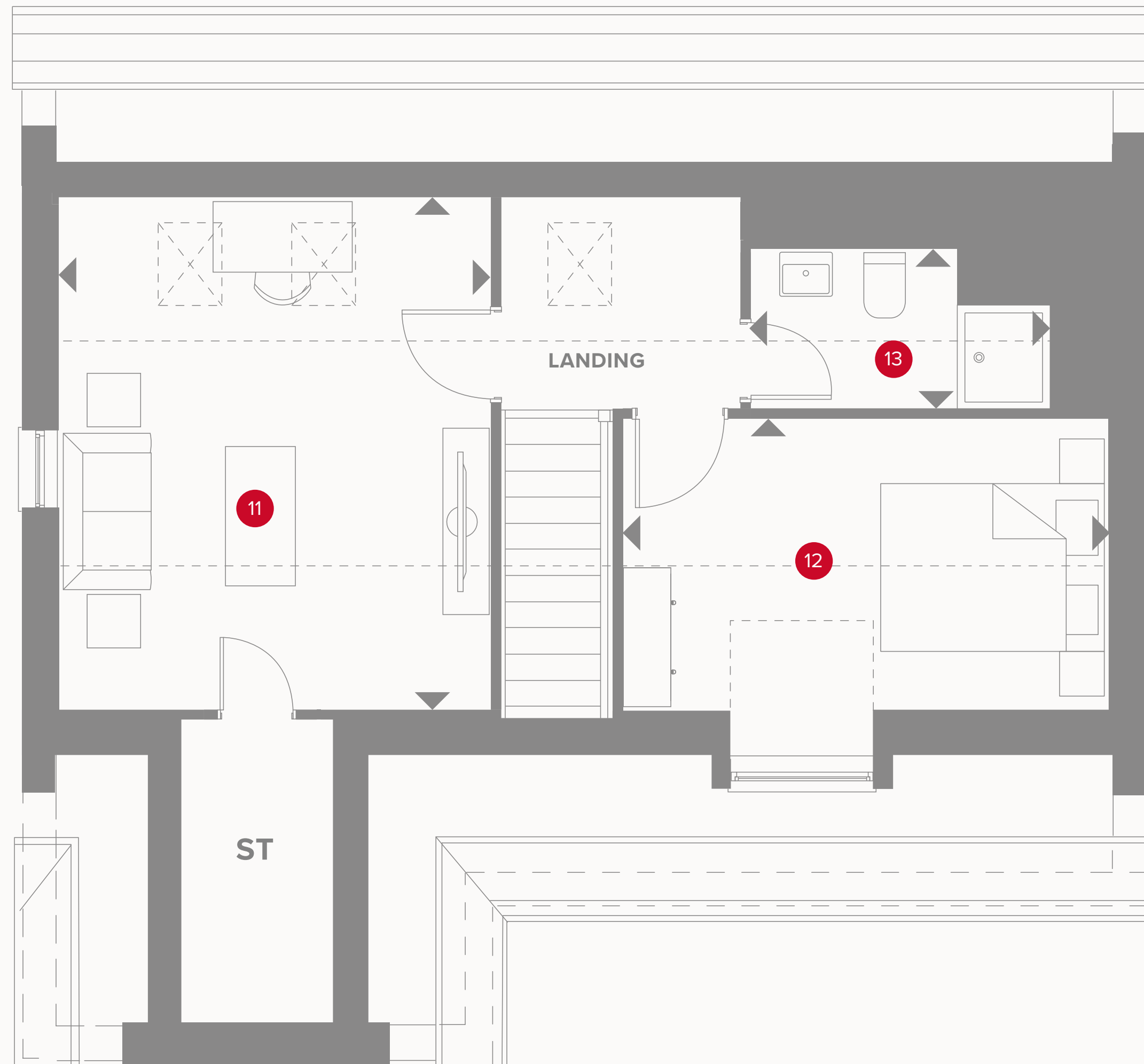


KEY

- ◀ Dimensions start
- OP Customer option
- HW Hot water storage
- ST Storage cupboard

THE HIGHGATE KEY SECOND FLOOR

11	Bedroom 4/Media room	14'5" x 12'1"	4.4 x 3.7 m
12	Bedroom 5	12'4" x 9'5"	4.1 x 3.8 m
13	Shower	8'8" x 4'3"	2.7 x 1.3 m



KEY

- ◀ Dimensions start
- ST Storage cupboard

**CONSUMER
CODE FOR
HOME BUILDERS**
www.consumercode.co.uk

Customers should note this illustration is an example of the Highgate house type. All dimensions indicated are approximate and the furniture layout is for illustrative purposes only. Homes may be 'handed' (mirror image) versions of the illustrations, and may be detached, semi-detached or terraced. Materials used may differ from plot to plot including render and roof tile colours. Detailed plans and specifications are available for inspection for each plot at our Sales Centre during working hours and customers must check their individual specifications prior to making a reservation.