



**ASH GARDENS**  
BURCOTE PARK, WOOD BURCOTE

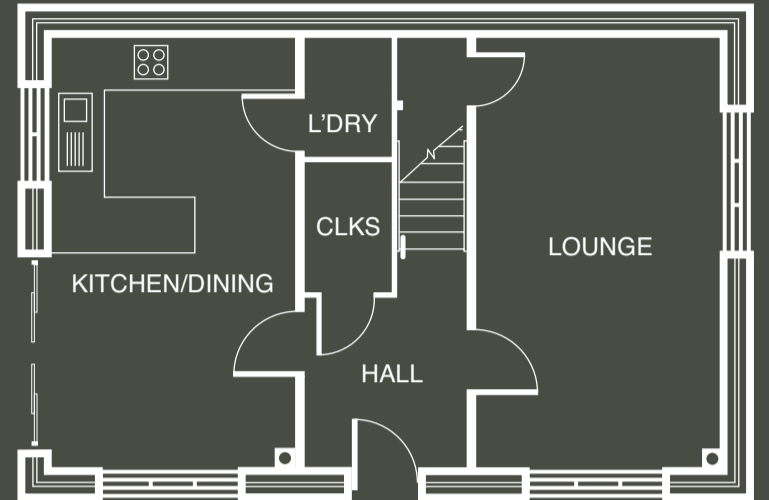
# Cypress

THREE BEDROOM HOME | 1137 SQ FT

*Available in Leicester Weathered Red Brick,  
Arden Red Brick, Natural Buff Stone &  
Natural Ironstone*

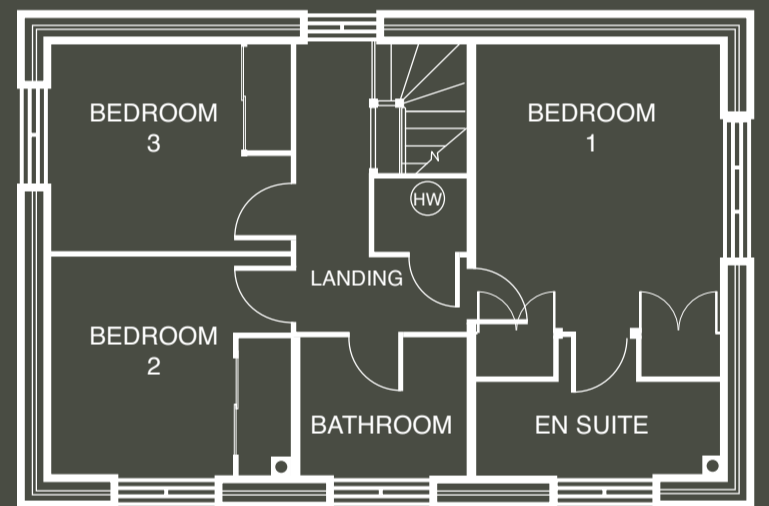
Plot No. 4, 13, 35, 38, 44, 47, 56, 79

This is an excellent home of quality and character, built with pride to offer a solid foundation for family life. The Cypress's design captures the essence of traditional house building.



## GROUND FLOOR

<b>LOUNGE</b>	<b>18'11" X 10'9"*</b>	<b>5.77 X 3.29M*</b>
<b>KITCHEN/DINING</b>	<b>18'11" X 10'11"*</b>	<b>5.77 X 3.33M*</b>
<b>CLOAKS</b>	<b>5'7" X 3'8"</b>	<b>1.71 X 1.12M</b>
<b>LAUNDRY</b>	<b>5'1" X 3'8"</b>	<b>1.57 X 1.12M</b>



## FIRST FLOOR

<b>BEDROOM 1</b>	<b>13'9" X 10'11"*</b>	<b>4.25 X 3.32M*</b>
<b>EN SUITE</b>	<b>10'11" X 6'7"*</b>	<b>3.32 X 2.05M*</b>
<b>BEDROOM 2</b>	<b>10'9" X 9'5"</b>	<b>3.28 X 2.87M</b>
<b>BEDROOM 3</b>	<b>10'9" X 9'2"</b>	<b>3.28 X 2.81M</b>
<b>BATHROOM</b>	<b>7'3" X 5'11"*</b>	<b>2.23 X 1.80M*</b>

NOTE: Sloping soffits to first floor. All wardrobes are optional and positions shown are for information only. \*Maximum dimension.

Customers should note this illustration is an example of the Cypress house type. All dimensions indicated are approximate and for illustrative purposes only. All wardrobes are subject to site specification, please see sales consultant for further details. Homes may be a 'handed' (mirror image) versions of the illustrations, and may be detached, semi-detached or terraced. Materials used may differ from plot to plot including render and roof tile colours. Detailed plans and specifications are available for inspection for each plot at our Marketing Suite during working hours and customers must check their individual specifications prior to making reservation.