



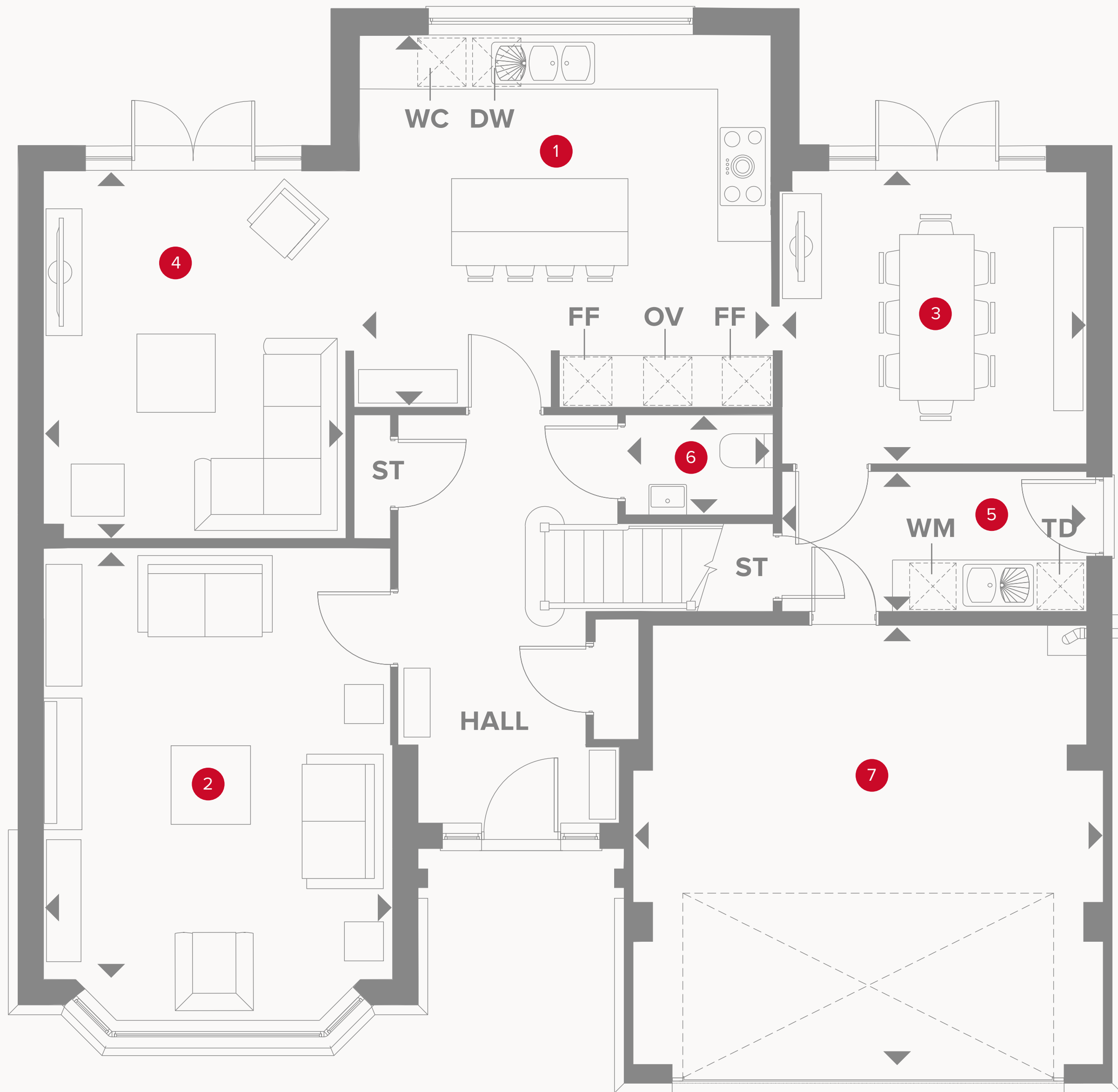
HERITAGE

- REDROW -

THE RICHMOND

FOUR BEDROOM DETACHED HOME





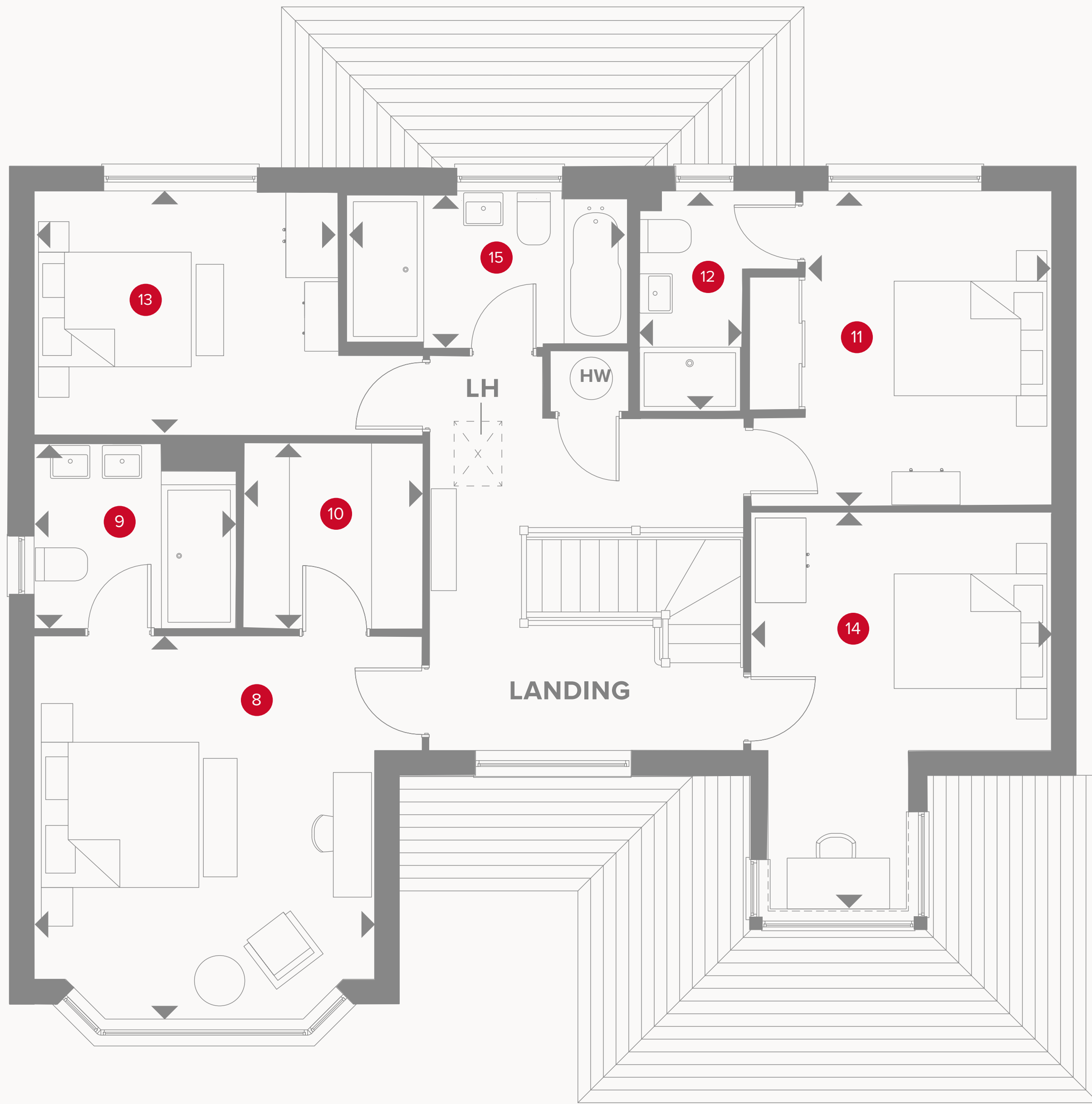
THE RICHMOND GROUND FLOOR

1	Kitchen	15'9" x 14'2"	4.76 x 4.27m
2	Lounge	16'3" x 13'2"	4.91 x 3.97m
3	Dining Room	11'5" x 11'1"	3.46 x 3.35m
4	Family Room	13'11" x 11'5"	4.20 x 3.46m
5	Utility	11'5" x 5'4"	3.46 x 1.62m
6	Cloaks	5'6" x 3'9"	1.67 x 1.12m
7	Garage	17'11" x 16'8"	5.41 x 5.04m



KEY

	Hob		Dimensions start	WM	Washing machine space
OV	Oven	TD	Tumble dryer space	DW	Dish washer space
FF	Fridge/freezer	ST	Storage cupboard	WC	Wine cooler



THE RICHMOND FIRST FLOOR

8	Bedroom 1	13'4" x 13'2"	4.02 x 3.97m
9	En-suite 1	8'0" x 7'2"	2.43 x 2.17m
10	Wardrobe	7'2" x 6'9"	2.17 x 2.05m
11	Bedroom 2	12'3" x 11'8"	3.70 x 3.52m
12	En-suite 2	8'6" x 4'3"	2.58 x 1.28m
13	Bedroom 3	11'8" x 9'5"	3.53 x 2.86m
14	Bedroom 4	11'8" x 9'2"	3.52 x 2.77m
15	Bathroom	11'0" x 5'11"	3.33 x 1.78m



Customers should note this illustration is an example of the Richmond house type. All dimensions indicated are approximate and the furniture layout is for illustrative purposes only. Homes may be 'handed' (mirror image) versions of the illustrations, and may be detached, semi-detached or terraced. Materials used may differ from plot to plot including render and roof tile colours. Detailed plans and specifications are available for inspection for each plot at our Customer Experience Suite or Sales Centre during working hours and customers must check their individual specifications prior to making a reservation. Please note that the specification show in this plan may include optional upgrades from standard specification. Please speak with your Sales Consultant or visit MyRedrow for more information.

KEY

- ◀ Dimensions start
- HW Hot water storage
- LH Loft hatch