



The Hampstead

Five Bedroom Home

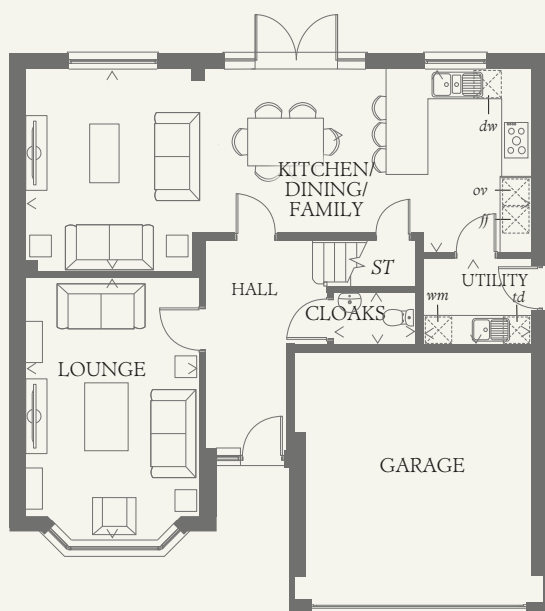




The Hampstead

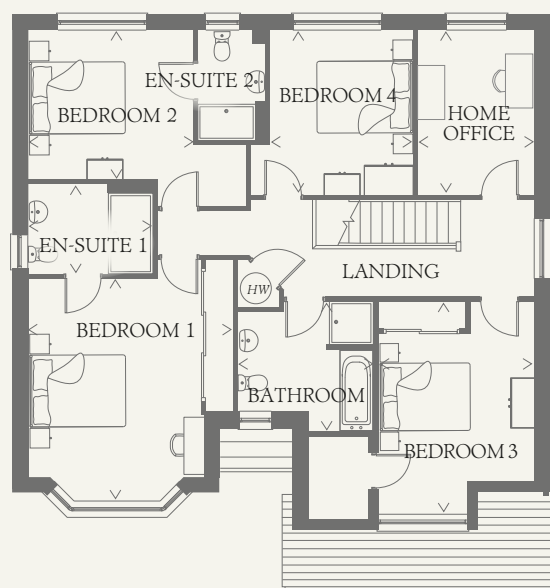
Five Bedroom Home

Reflecting the inspiration of the Arts and Crafts movement and driven by the desire to preserve individuality and craftsmanship, the New Heritage Collection by Redrow, welcomes everyone in and leaves no-one out.



GROUND FLOOR

LOUNGE	17'5" x 11'7"	5.32	x	3.56m
KITCHEN/ DINING/ FAMILY	33'8" x 13'6"	10.31	x	4.16m
UTILITY	7'2" x 5'8"	2.20	x	1.77m
CLOAKS	5'6" x 3'6"	1.72	x	1.09m
GARAGE	17'1" x 15'9"	5.22	x	4.89m



FIRST FLOOR

BEDROOM 1	14'7" x 13'6"	4.48	x	4.14m
EN-SUITE 1	8'1" x 6'0"	2.48	x	1.83m
BEDROOM 2	14'5" x 12'0"	4.42	x	3.66m
EN-SUITE 2	7'5" x 4'4"	2.29	x	1.34m
BEDROOM 3	15'0" x 10'5"	4.57	x	3.20m
BEDROOM 4	11'3" x 9'8"	3.43	x	2.98m
HOME OFFICE	11'3" x 7'7"	3.43	x	2.36m
BATHROOM	9'1" x 8'8"	2.78	x	2.68m

CONSUMER CODE FOR HOME BUILDERS

www.consumercode.co.uk

Customers should note this illustration is an example of the Hampstead house type. All dimensions indicated are approximate and the furniture layout is for illustrative purposes only. Homes may be 'handed' (mirror image) versions of the illustrations, and may be detached, semi-detached or terraced. Materials used may differ from plot to plot including render and roof tile colours. Detailed plans and specifications are available for inspection for each plot at our Sales Centre during working hours and customers must check their individual specifications prior to making a reservation.

KEY

Hob	Tumble dryer space
Oven	Hot water cylinder
Fridge/freezer	Cupboard
Washing machine space	
Dishwasher space	

< Denotes where dimensions are taken from. All wardrobes are subject to site specification. Please see Sales Consultant for further details.

AF 2328631. WF_HAMP_DM.1