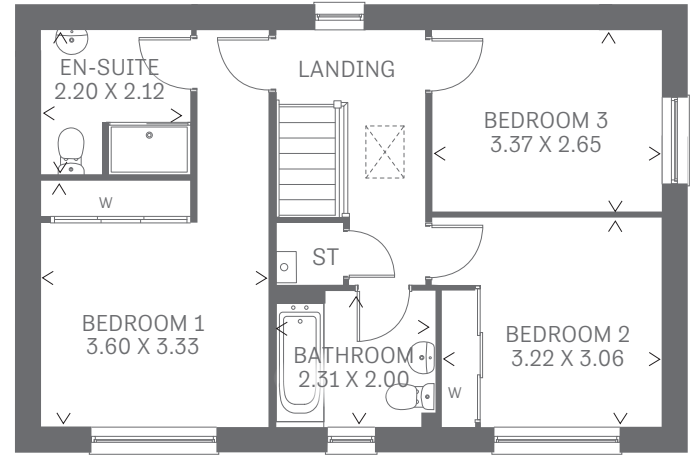
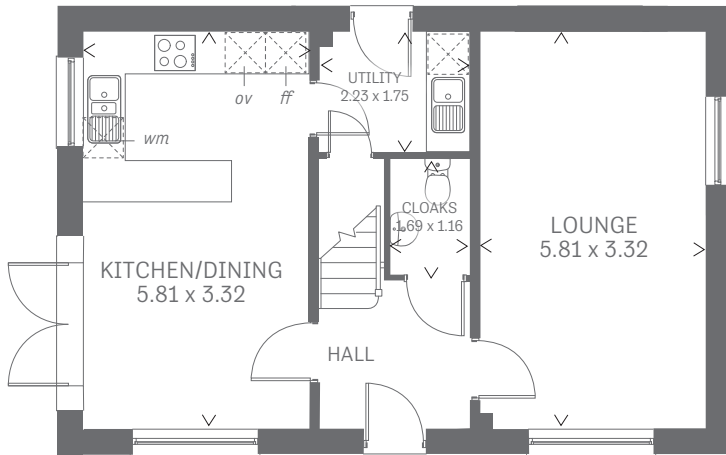


Ogmore 2

THREE BEDROOM DETACHED HOME



Ogmore 2



Three Bedroom Home

A home of real character and charm, The Ogmore 3 creates the perfect blend between the practical and the peaceful, the yin and the yang of daily life, to create a sense of true harmony.

GROUND FLOOR

Kitchen/ Dining	19'1" x 10'9"	5.81 x 3.32 m
Lounge	19'1" x 10'9"	5.81 x 3.32 m
Utility	7'3" x 5'7"	2.23 x 1.75 m
Cloaks	5'5" x 3'8"	1.69 x 1.16 m

FIRST FLOOR

Bedroom 1	10'9" x 9'8"	3.60 x 3.33 m
En-suite	11'4" x 4'0"	3.49 x 1.22 m
Bedroom 2	10'6" x 10'0"	3.22 x 3.06 m
Bedroom 3	11'1" x 8'7"	3.37 x 2.65 m
Bathroom	7'6" x 6'6"	2.31 x 2.00 m

CONSUMER CODE FOR HOME BUILDERS

www.consumercode.co.uk

Customers should note this illustration is an example of the Ogmore 3 house type. All dimensions indicated are approximate and furniture layout is for illustrative purposes only. Homes may be 'handed' (mirror image) versions of the illustrations, and may be detached, semi-detached or terraced. Materials used may differ from plot to plot including render and roof tile colours. Detailed plans and specifications are available for inspection for each plot at our Sales Centre during working hours and customers must check their individual specifications prior to making a reservation.

KEY Hob Oven Fridge/freezer Washing machine space Dishwasher Tumble dryer Hot water cylinder Cupboard

Note: Bedroom dimensions taken into wardrobe recess. All wardrobes are subject to site specification. Please see Sales Consultant for further details.

Traditional homes, built the way you remember