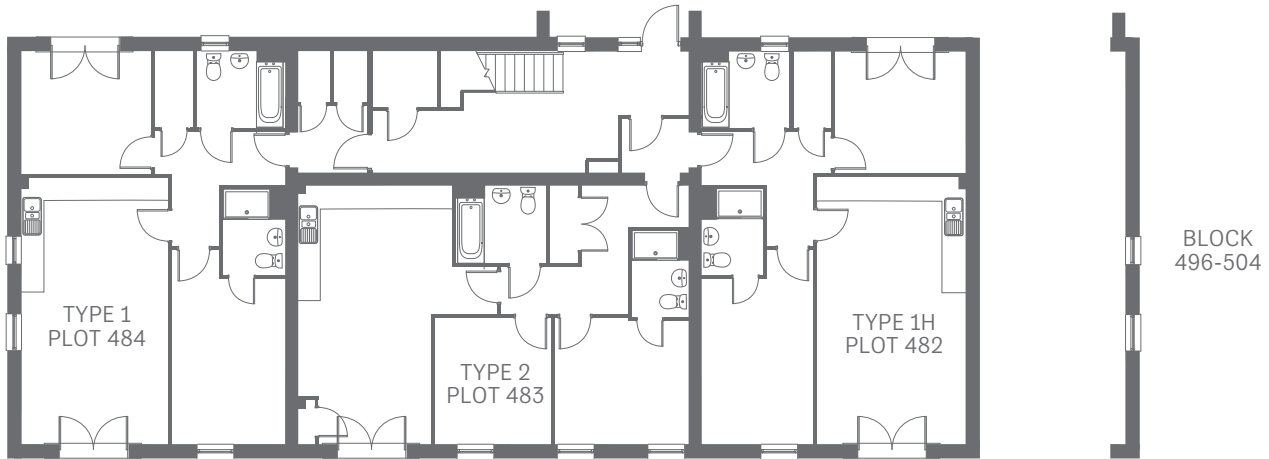


Ty Glas -&- Ty Coch Apartments

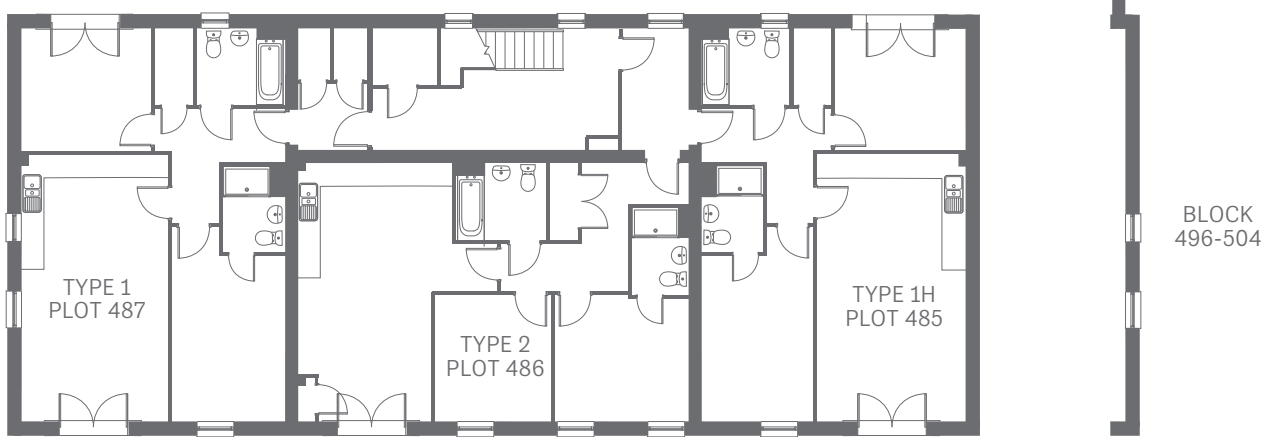
TWO BEDROOM



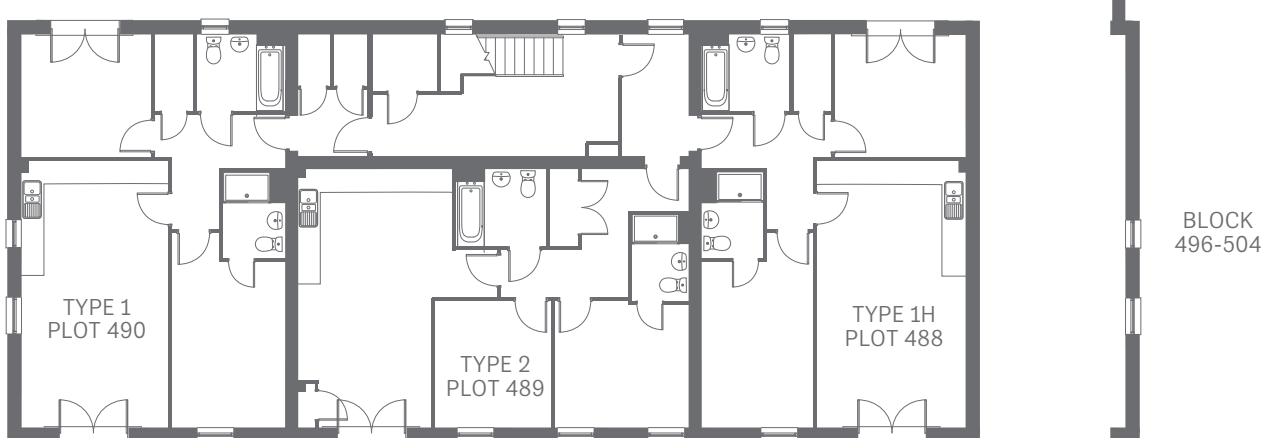
Apartments



Ground Floor



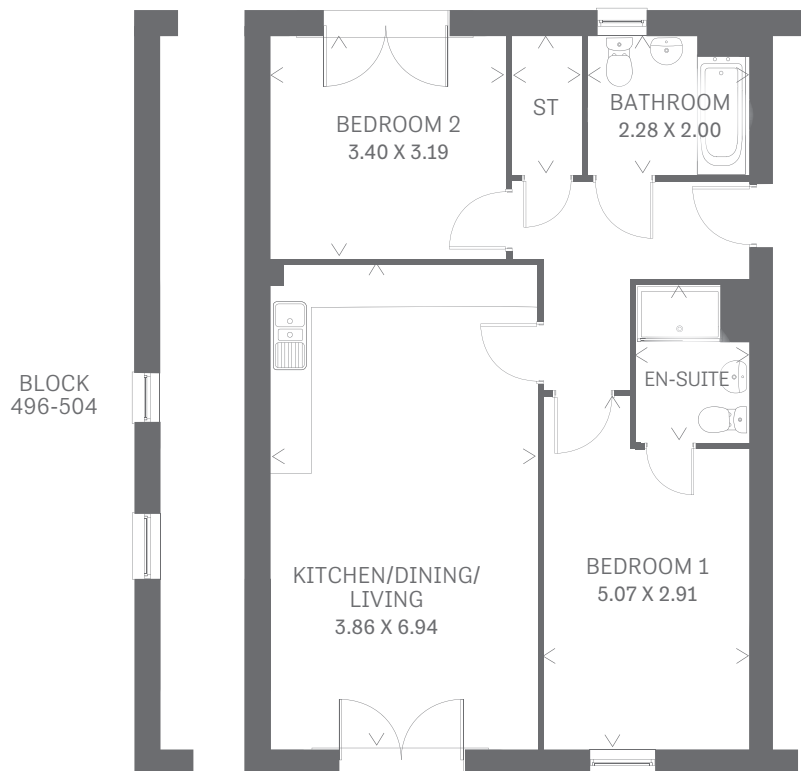
First Floor



Second Floor

Traditional homes, built the way you remember

Apartment type 1



Two Bedroom Apartment

The spacious end-terrace Afon Teifi 1 uses smart design to find room for a surprising level of luxury. An en-suite bathroom to the master bedroom and downstairs cloaks, make it a generous family home with space for everyone.

GROUND FLOOR

Kitchen/ Dining/Living	12'7" X 22'8"	3.86 X 6.94
Bedroom 1	16'6" X 9'5"	5.07 X 2.91
En-suite	7'3" X 5'3"	2.24 X 1.61
Bedroom 2	11'1" X 10'5"	3.40 X 3.19
Bathroom	7'5" X 6'6"	2.28 X 2.00
Store	3'2" X 6'6"	0.98 X 2.00

**CONSUMER
CODE FOR
HOME BUILDERS**

www.consumercode.co.uk

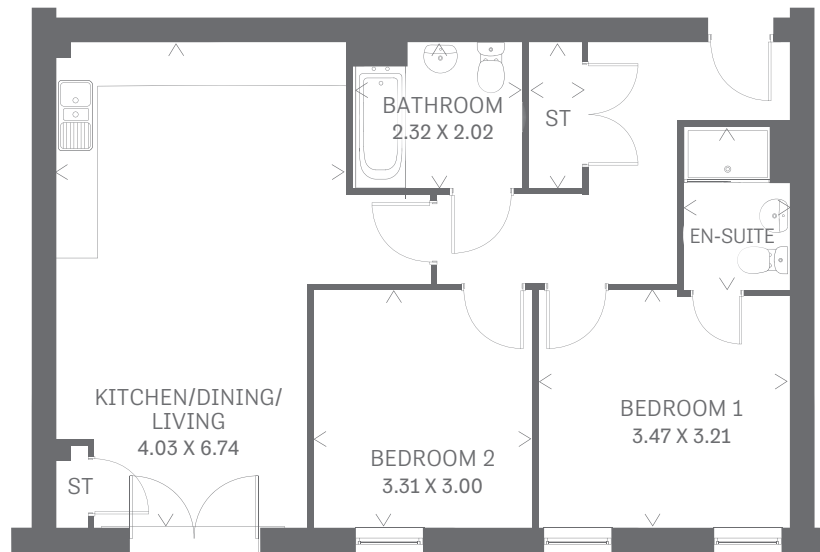
† Window variation. Customers should note this illustration is an example of the Apartment type 1. All dimensions indicated are approximate and furniture layout is for illustrative purposes only. Homes may be 'handed' (mirror image) versions of the illustrations, and may be detached, semi-detached or terraced. Materials used may differ from plot to plot including render and roof tile colours. Detailed plans and specifications are available for inspection for each plot at our Sales Centre during working hours and customers must check their individual specifications prior to making a reservation.

KEY Hob Oven Fridge/freezer Dishwasher space
 Washing machine Tumble dryer space
 Hot water cylinder Cupboard

Note: Bedroom dimensions taken into wardrobe recess. All wardrobes are subject to site specification. Please see Sales Consultant for further details.

Traditional homes, built the way you remember

Apartment type 2



Two Bedroom Apartment

The spacious end-terrace Afon Teifi 1 uses smart design to find room for a surprising level of luxury. An en-suite bathroom to the master bedroom and downstairs cloaks, make it a generous family home with space for everyone.

GROUND FLOOR

Kitchen/ Dining/Living	13'2" X 22'1"	4.03 X 6.74
Bedroom 1	11'4" X 10'5"	3.47 X 3.21
En-suite	7'3" X 4'8"	2.24 X 1.48
Bedroom 2	10'8" X 9'9"	3.31 X 3.00
Bathroom	7'6" X 6'6"	2.32 X 2.02
Store	2'4" X 6'6"	0.74 X 2.02

CONSUMER CODE FOR HOME BUILDERS

www.consumercode.co.uk

Customers should note this illustration is an example of the Apartment type 2. All dimensions indicated are approximate and furniture layout is for illustrative purposes only. Homes may be 'handed' (mirror image) versions of the illustrations, and may be detached, semi-detached or terraced. Materials used may differ from plot to plot including render and roof tile colours. Detailed plans and specifications are available for inspection for each plot at our Sales Centre during working hours and customers must check their individual specifications prior to making a reservation.

KEY Hob Oven Fridge/freezer dw Dishwasher space
 wm Washing machine td Tumble dryer space
 HW Hot water cylinder ST Cupboard

Note: Bedroom dimensions taken into wardrobe recess.
 All wardrobes are subject to site specification. Please see Sales Consultant for further details.

Traditional homes, built the way you remember