



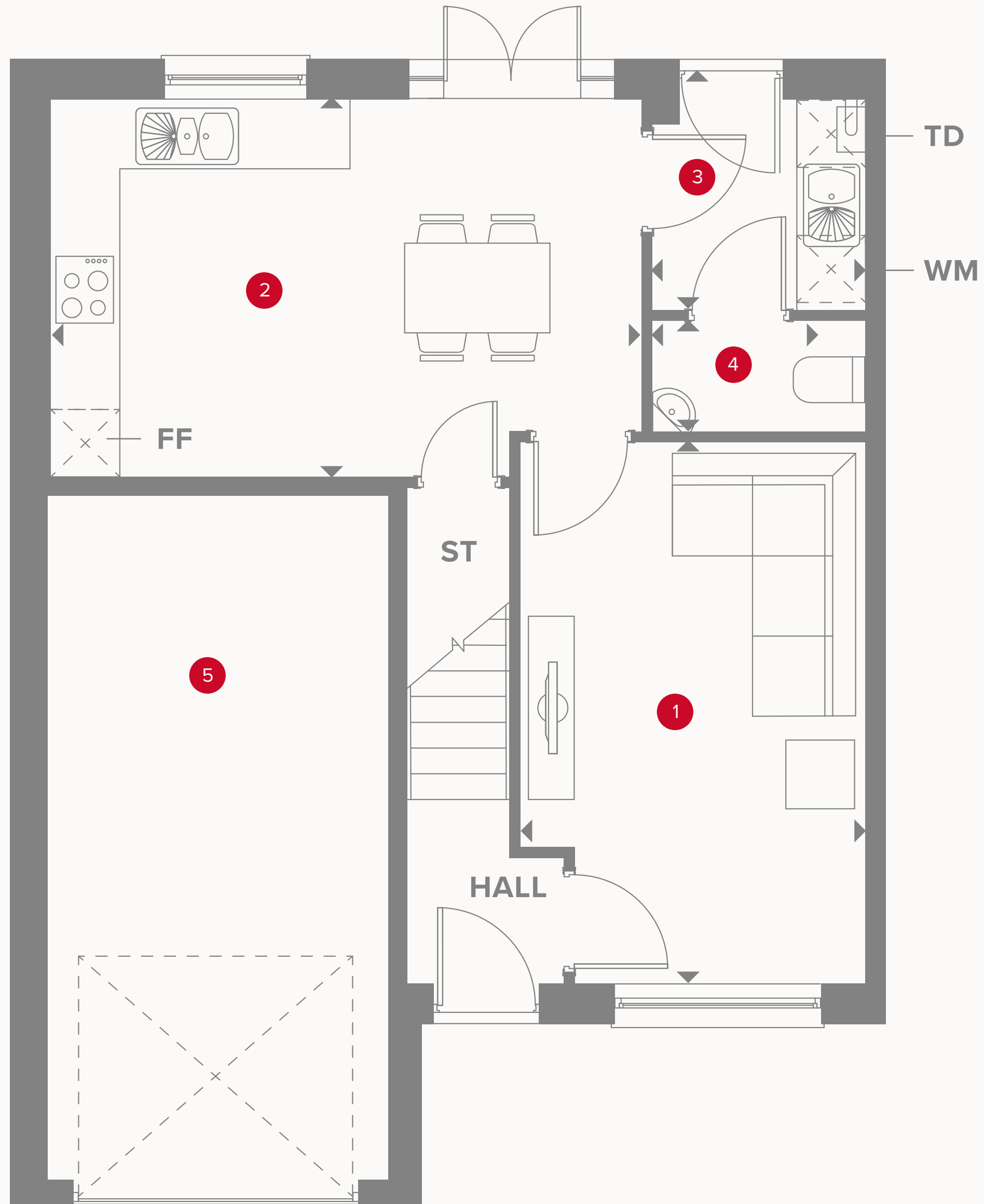
INSPIRED

- REDROW -

THE BIRCH

THREE BEDROOM HOME







THE BIRCH GROUND FLOOR

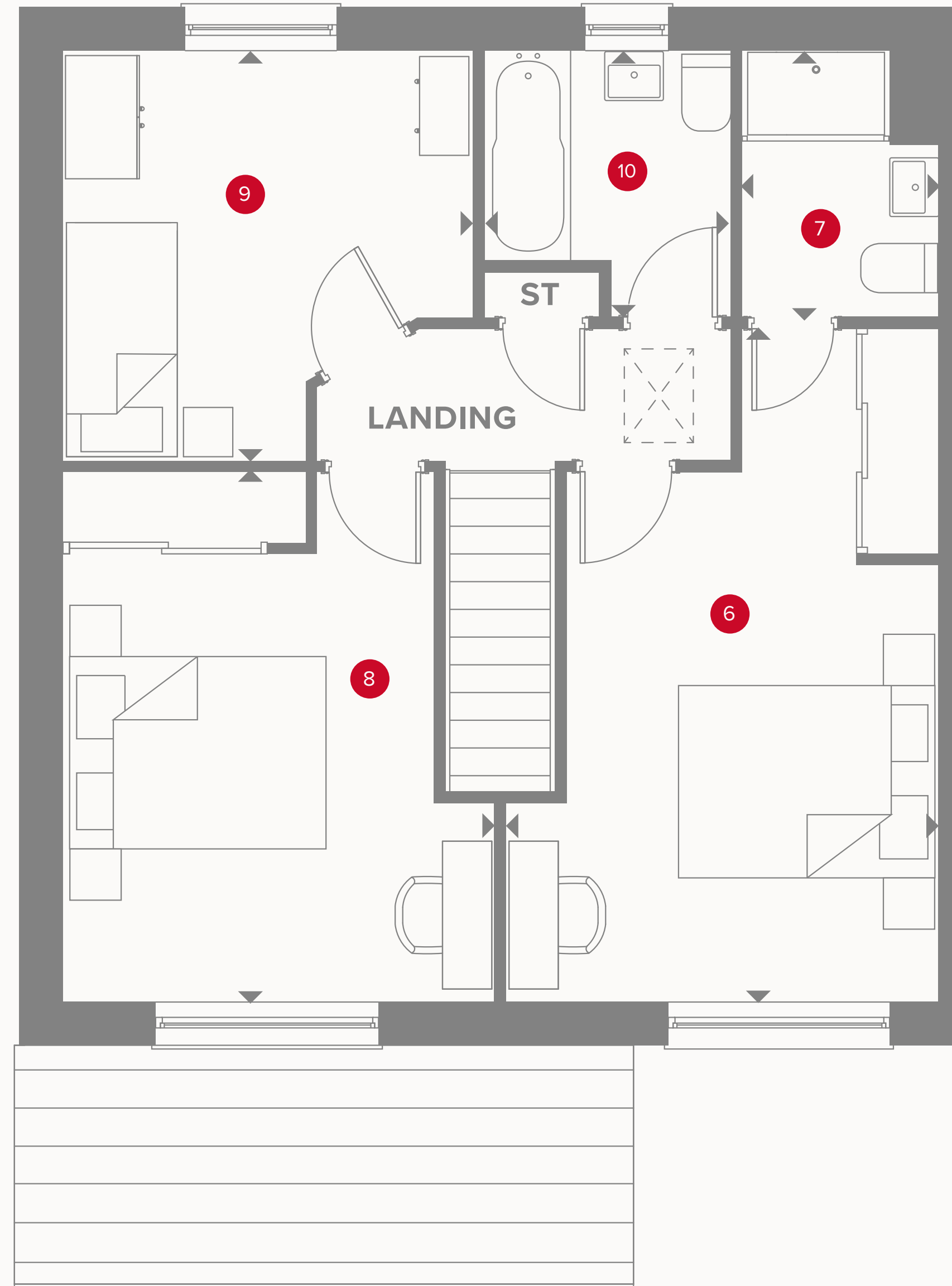
1	Lounge	15'7" x 9'11"	4.74 x 3.02 m
2	Kitchen/dining	17'0" x 10'10"	5.17 x 3.30 m
3	Utility	6'2" x 6'1"	1.87 x 1.85 m
4	Cloaks	6'2" x 3'2"	1.89 x 0.97 m
5	Garage	19'6" x 9'7"	5.95 x 2.92 m



KEY

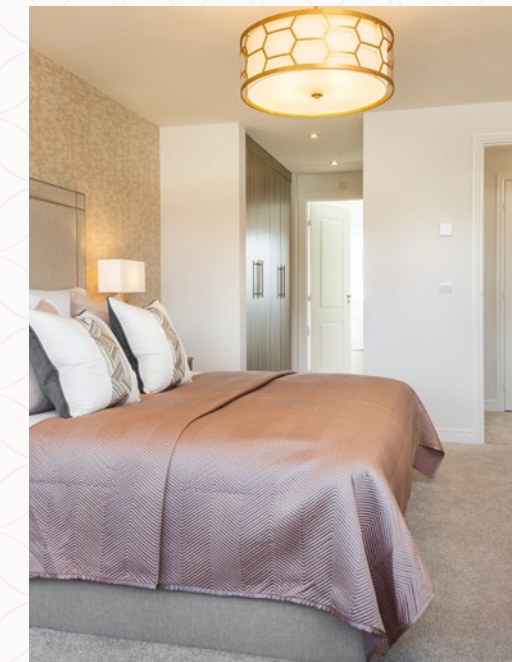
-  Hob
- OV** Oven
- FF** Fridge/freezer
- TD** Tumble dryer space

-  Dimensions start
- ST** Storage cupboard
- WM** Washing machine space



THE BIRCH FIRST FLOOR

6	Bedroom 1	14'2" x 11'5"	4.31 x 3.49 m
7	En-suite	7'0" x 5'3"	2.14 x 1.60 m
8	Bedroom 2	11'11" x 11'7"	3.62 x 3.52 m
9	Bedroom 3	10'11" x 11'0"	3.33 x 3.35 m
10	Bathroom	6'7" x 5'7"	2.00 x 1.71 m



KEY

- ◀ Dimensions start
- ST Storage cupboard

**CONSUMER
CODE FOR
HOME BUILDERS**
www.consumercode.co.uk

Customers should note this illustration is an example of the Birch house type. All dimensions indicated are approximate and the furniture layout is for illustrative purposes only. Homes may be 'handed' (mirror image) versions of the illustrations, and may be detached, semi-detached or terraced. Materials used may differ from plot to plot including render and roof tile colours. Detailed plans and specifications are available for inspection for each plot at our Sales Centre during working hours and customers must check their individual specifications prior to making a reservation. All wardrobes are subject to site specification. Please see Sales Consultant for further details.

Plots 37, 38, 48, 49, 57, 58, 111 & 112