



Cwrt Morgan

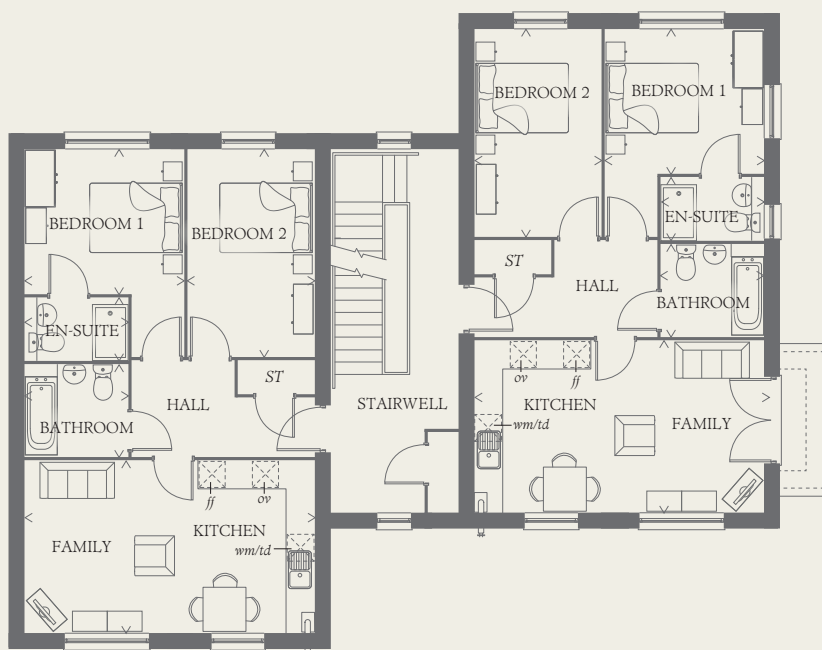
Two Bedroom Apartments





Cwrt Morgan

Two Bedroom Apartments – First Floor



APARTMENT 118

KITCHEN/ FAMILY	20'4" x 12'0"	6.21 x 3.67 m
BEDROOM 1	11'1" x 10'1"	3.40 x 3.09 m
EN-SUITE	7'2" x 4'4"	2.20 x 1.35 m
BEDROOM 2	14'6" x 9'0"	4.45 x 2.72 m
BATHROOM	7'2" x 6'5"	2.20 x 1.97 m

APARTMENT 119

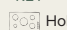
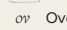

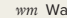


KITCHEN/ FAMILY	20'4" x 12'0"	6.21 x 3.67 m
BEDROOM 1	11'2" x 10'1"	3.40 x 3.09 m
EN-SUITE	7'2" x 4'4"	2.20 x 1.35 m
BEDROOM 2	14'6" x 9'0"	4.45 x 2.72 m
BATHROOM	7'2" x 6'5"	2.20 x 1.97 m

**CONSUMER
CODE FOR
HOME BUILDERS**

www.consumercode.co.uk

Customers should note this illustration is an example of the Cwrt Morgan apartments. All dimensions indicated are approximate and the furniture layout is for illustrative purposes only. Homes may be 'handed' (mirror image) versions of the illustrations, and may be detached, semi-detached or terraced. Materials used may differ from plot to plot including render and roof tile colours. Detailed plans and specifications are available for inspection for each plot at our Sales Centre during working hours and customers must check their individual specifications prior to making a reservation.

KEY

-  Hob
-  Oven
-  Fridge/freezer
-  Washing machine space
-  Tumble dryer space
-  Cupboard

< Denotes where dimensions are taken from. All wardrobes are subject to site specification. Please see Sales Consultant for further details.

1532342 | NHL MORGAN COURT

