



The Loughor

Four Bedroom Home

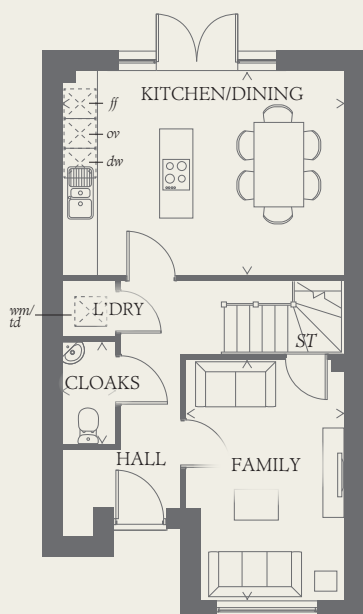




The Loughor

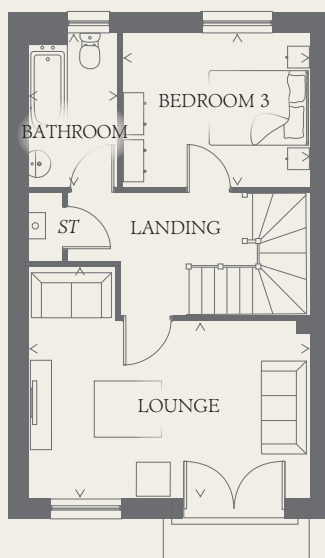
Four Bedroom Home

Though understated and simple from the outside, within you will find a different level of luxury living. Finished to the very highest standards, it includes a bathroom on every level, plus an ensuite to the main bedroom.



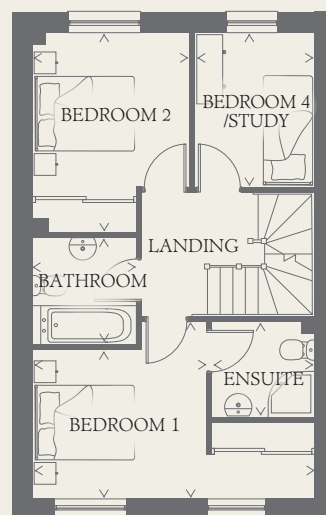
GROUND FLOOR

KITCHEN/ DINING	16'2" x 11'9"	4.96 x 3.62 m
FAMILY	16'0" x 9'3"	4.88 x 2.82 m
CLOAKS	6'0" x 3'1"	1.82 x 0.96 m
LAUNDRY	3'1" x 3'1"	0.96 x 0.96 m



FIRST FLOOR

BEDROOM 3	10'9" x 9'0"	3.32 x 2.74 m
LOUNGE	16'3" x 13'4"	4.96 x 4.09 m
BATHROOM	9'0" x 5'2"	2.74 x 1.60 m



SECOND FLOOR

BEDROOM 1	16'3" x 10'3"	4.96 x 3.14 m
ENSUITE	6'0" x 5'5"	1.84 x 1.67 m
BEDROOM 2	11'6" x 9'1"	3.54 x 2.78 m
BEDROOM 4 /STUDY	9'0" x 7'0"	2.74 x 2.13 m
BATHROOM	6'2" x 6'0"	1.90 x 1.84 m

CONSUMER CODE FOR HOME BUILDERS

www.consumercode.co.uk

Customers should note this illustration is an example of the Loughor house type. All dimensions indicated are approximate and the furniture layout is for illustrative purposes only. Homes may be 'handed' (mirror image) versions of the illustrations, and may be detached, semi-detached or terraced. Materials used may differ from plot to plot including render and roof tile colours. Detailed plans and specifications are available for inspection for each plot at our Sales Centre during working hours and customers must check their individual specifications prior to making a reservation.

KEY

Hob	<i>td</i> Tumble dryer space
<i>ov</i> Oven	<i>ST</i> Cupboard
<i>ff</i> Fridge/freezer	
<i>wm</i> Washing machine space	
<i>dw</i> Dishwasher space	

< Denotes where dimensions are taken from. All wardrobes are subject to site specification. Please see Sales Consultant for further details.

AF 171893_EF_LOUG_DCC.1