



The Teifi 3

Three Bedroom Home

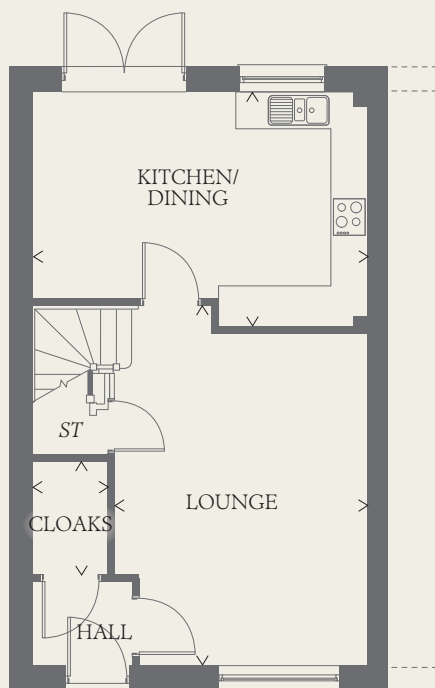




The Teifi 3

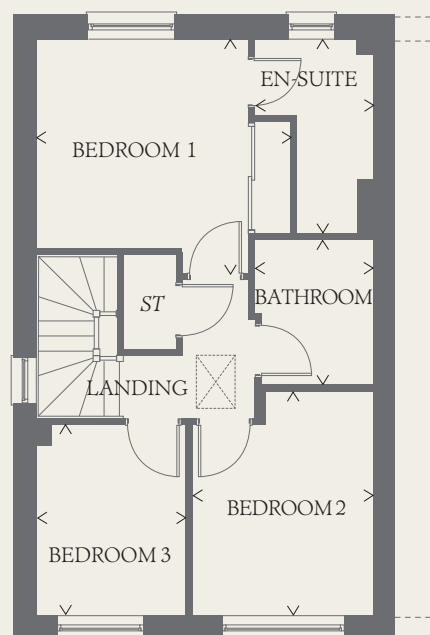
Three Bedroom Home

The Teifi 3 may look contemporary from the outside however inside it boasts traditional living with a large lounge, three double bedrooms and an en-suite to the master.



GROUND FLOOR

KITCHEN/ DINING	16'3" x 11'5"	4.95 x 3.47 m
LOUNGE	17'5" x 12'3"	5.32 x 3.73 m
CLOAKS	5'7" x 3'8"	1.71 x 1.13 m



FIRST FLOOR

BEDROOM 1	12'3" x 10'1"	3.11 x 3.08 m
EN-SUITE	9'4" x 5'7"	2.85 x 1.71 m
BEDROOM 2	10'9" x 8'7"	3.28 x 2.62 m
BEDROOM 3	9'1" x 7'2"	2.78 x 2.19 m
BATHROOM	7'1" x 5'7"	2.17 x 1.71 m

CONSUMER CODE FOR HOME BUILDERS

www.consumercode.co.uk

Customers should note this illustration is an example of the Teifi 3 house type. All dimensions indicated are approximate and the furniture layout is for illustrative purposes only. Homes may be 'handed' (mirror image) versions of the illustrations, and may be detached, semi-detached or terraced. Materials used may differ from plot to plot including render and roof tile colours. Detailed plans and specifications are available for inspection for each plot at our Sales Centre during working hours and customers must check their individual specifications prior to making a reservation.

KEY

- Hob
- Oven
- Fridge/freezer
- Washing machine space
- Dishwasher space

- Tumble dryer space
- Hot water cylinder
- Cupboard

< Denotes where dimensions are taken from. All wardrobes are subject to site specification. Please see Sales Consultant for further details.

1640099 TEIFI 3 RV

