



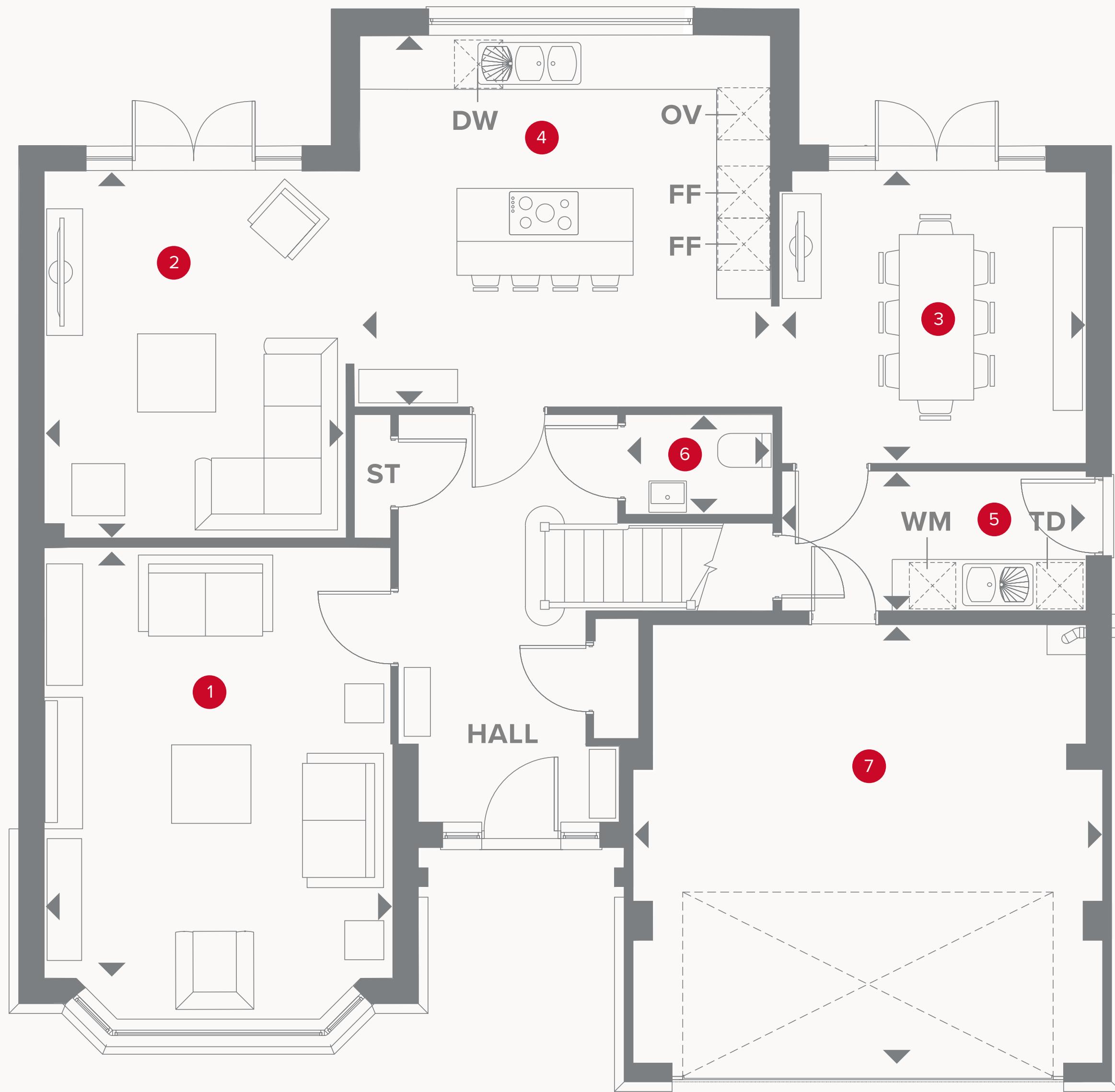
HERITAGE

- REDROW -

THE RICHMOND

FOUR BEDROOM DETACHED HOME







THE RICHMOND GROUND FLOOR

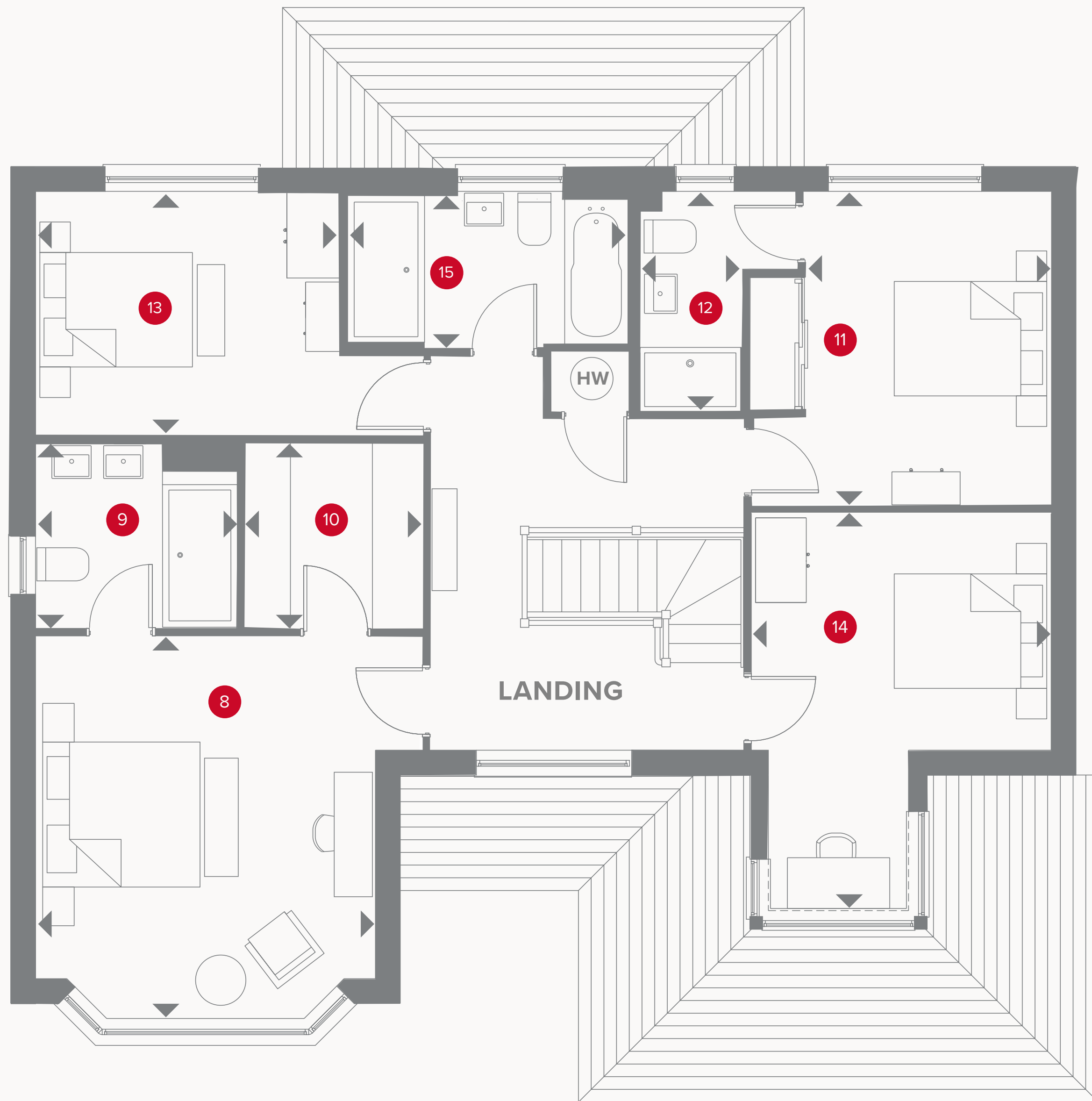
1	Lounge	17'8" x 13'0"	5.38 x 3.97 m
2	Family	13'9" x 11'4"	4.20 x 3.45 m
3	Dining	11'6" x 11'0"	3.51 x 3.35 m
4	Kitchen	15'7" x 14'0"	4.76 x 4.27 m
5	Utility	11'4" x 5'4"	3.46 x 1.62 m
6	Cloaks	5'6" x 3'8"	1.69 x 1.12 m
7	Garage	17'9" x 16'6"	5.41 x 5.04 m



KEY

-  Hob
- OV** Oven
- FF** Fridge/freezer
- TD** Tumble dryer space

-  Dimensions start
- ST** Storage cupboard
- WM** Washing machine space
- DW** Dish washer space



THE RICHMOND FIRST FLOOR

8	Bedroom 1	14'9" x 13'0"	4.49 x 3.97 m
9	En-suite	17'11" x 7'1"	2.43 x 2.17 m
10	Wardrobe	7'1" x 6'9"	2.17 x 2.05 m
11	Bedroom 2	12'2" x 11'7"	3.70 x 3.52 m
12	En-suite 2	8'6" x 4'2"	2.58 x 1.28 m
13	Bedroom 3	11'7" x 9'5"	3.53 x 2.86 m
14	Bedroom 4	11'7" x 9'1"	3.52 x 2.78 m
15	Bathroom	10'11" x 5'10"	3.33 x 1.78 m



**CONSUMER
CODE FOR
HOME BUILDERS**
www.consumercode.co.uk

Customers should note this illustration is an example of the Richmond house type. All dimensions indicated are approximate and the furniture layout is for illustrative purposes only. Homes may be 'handed' (mirror image) versions of the illustrations, and may be detached, semi-detached or terraced. Materials used may differ from plot to plot including render and roof tile colours. Detailed plans and specifications are available for inspection for each plot at our Sales Centre during working hours and customers must check their individual specifications prior to making a reservation. Computer generated images are for indicative purposes only.

KEY

- ← Dimensions start
- HW** Hot water cylinder