

FRENCHAY GARDENS



The Grantham

Four Bedroom Home



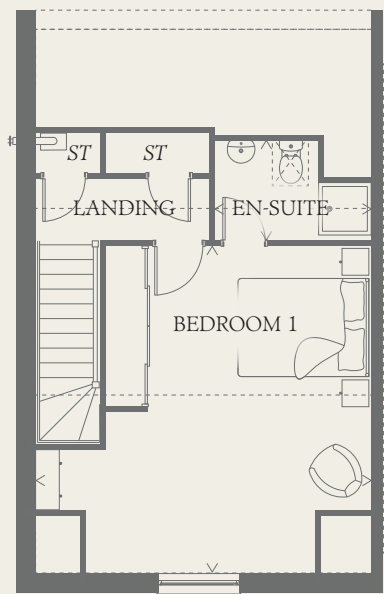
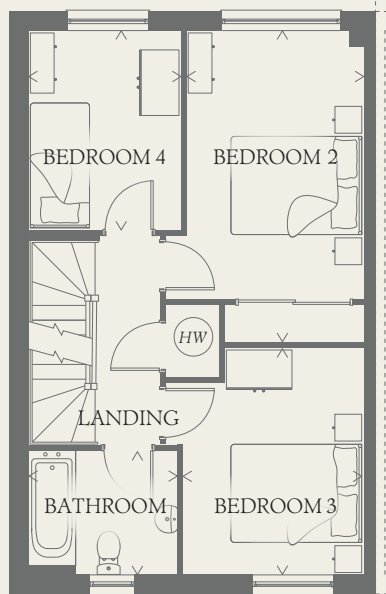
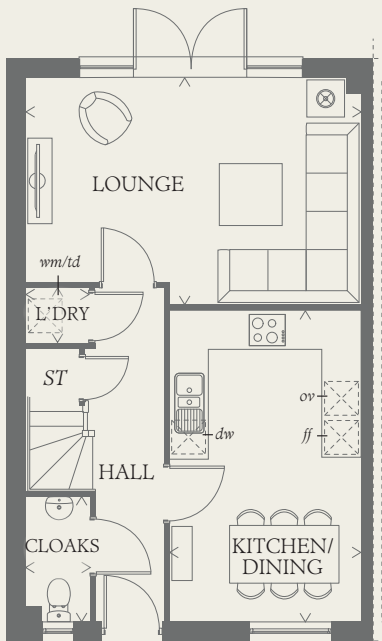


FRENCHAY GARDENS

The Grantham

Four Bedroom Home

Carefully considered design elevates this three storey home above its townhouse rivals, creating a superb home of spacious rooms that reach their peak in the exceptional second floor master suite, which is so much more than just a bedroom.



GROUND FLOOR

LOUNGE	16'8" x 11'3"	5.09 x 3.43 m
KITCHEN/ DINING	15'6" x 9'7"	4.73 x 2.93 m
CLOAKS	6'2" x 3'2"	1.87 x 0.96 m
LAUNDRY	3'1" x 2'9"	0.94 x 0.83 m

FIRST FLOOR

BEDROOM 2	15'6" x 8'10"	4.73 x 2.70 m
BEDROOM 3	11'3" x 9'0"	3.43 x 2.75 m
BEDROOM 4	9'5" x 7'7"	3.00 x 2.30 m
BATHROOM	7'5" x 6'2"	2.26 x 1.87 m

SECOND FLOOR

BEDROOM 1	16'6" x 13'3"	5.05 x 4.96 m
EN-SUITE	7'10" x 5'1"	2.38 x 1.54 m

**CONSUMER
CODE FOR
HOME BUILDERS**

www.consumercode.co.uk

Customers should note this illustration is an example of the Grantham house type. All dimensions indicated are approximate and the furniture layout is for illustrative purposes only. Homes may be 'handed' (mirror image) versions of the illustrations, and may be detached, semi-detached or terraced. Materials used may differ from plot to plot including render and roof tile colours. Detailed plans and specifications are available for inspection for each plot at our Sales Centre during working hours and customers must check their individual specifications prior to making a reservation.

KEY

Hob	Tumble dryer space
Oven	Hot water cylinder
Fridge/freezer	Cupboard
Washing machine space	
Dishwasher space	

< Denotes where dimensions are taken from. All wardrobes are subject to site specification. Please see Sales Consultant for further details.

AF 180387_EF_GRAN_SM.2.0

