



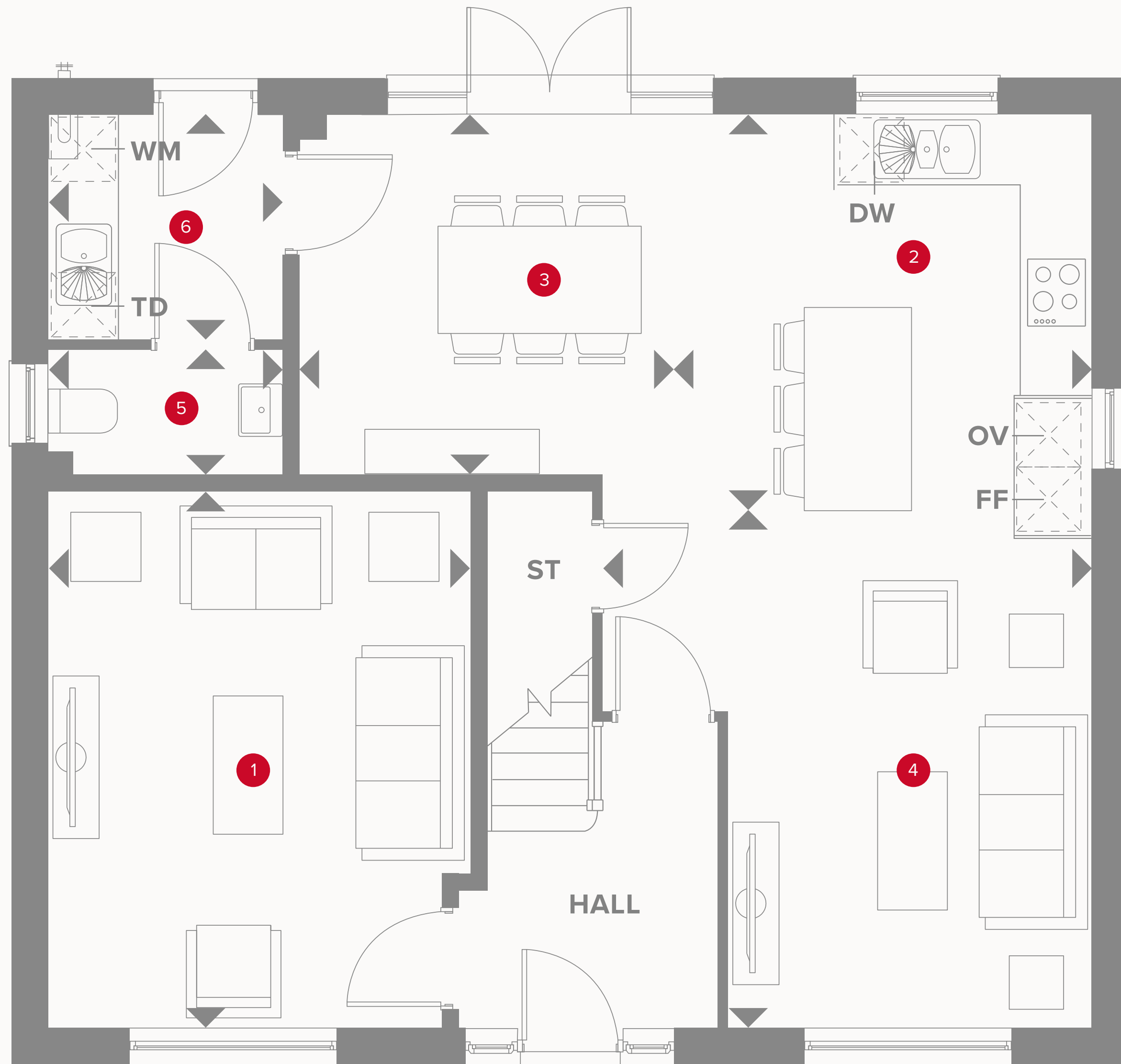
HERITAGE

- REDROW -

THE HARROGATE

FOUR BEDROOM HOME






THE HARROGATE GROUND FLOOR

1	Lounge	15'2" x 12'0"	4.63 x 3.65 m
2	Kitchen	12'0" x 9'11"	3.53 x 3.50 m
3	Dining	12'6" x 10'3"	3.31 x 3.13 m
4	Family	13'11" x 10'4"	4.41 x 4.23 m
5	Cloaks	6'8" x 3'7"	2.04 x 1.09 m
6	Utility	6'8" x 6'5"	2.04 x 1.95 m



KEY

-  Hob
- OV** Oven
- FF** Fridge/freezer
- TD** Tumble dryer space

-  Dimensions start
- ST** Storage cupboard
- WM** Washing machine space
- DW** Dish washer space



THE HARROGATE FIRST FLOOR

7	Bedroom 1	12'2" x 10'4"	3.72 x 3.15 m
8	Wardrobe	6'10" x 6'5"	2.09 x 1.96 m
9	En-suite	8'4" x 5'7"	2.53 x 1.71 m
10	Bedroom 2	13'7" x 10'2"	4.13 x 3.11 m
11	Bedroom 3	12'1" x 10'2"	3.69 x 3.11 m
12	Bedroom 4	10'4" x 9'6"	3.40 x 2.89 m
13	Bathroom	7'7" x 6'1"	2.31 x 1.86 m



KEY

- ◀ Dimensions start
- HW Hot water storage

**CONSUMER
CODE FOR
HOME BUILDERS**

www.consumercode.co.uk

Customers should note this illustration is an example of the Harrogate house type. All dimensions indicated are approximate and the furniture layout is for illustrative purposes only. Homes may be 'handed' (mirror image) versions of the illustrations, and may be detached, semi-detached or terraced. Materials used may differ from plot to plot including render and roof tile colours. Detailed plans and specifications are available for inspection for each plot at our Sales Centre during working hours and customers must check their individual specifications prior to making a reservation.