



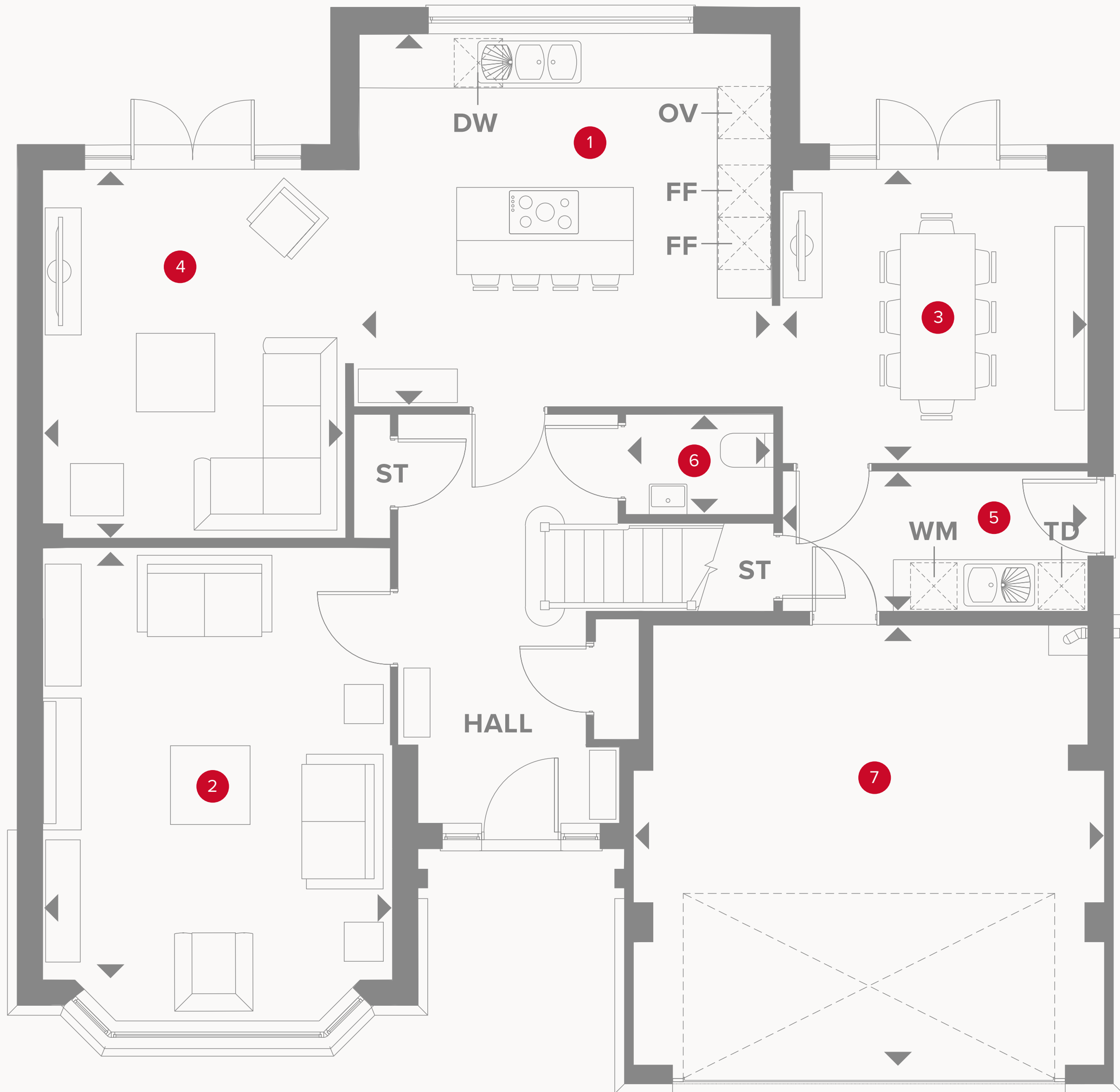
**HERITAGE**

- REDROW -

# THE RICHMOND

FOUR BEDROOM DETACHED HOME







# THE RICHMOND GROUND FLOOR

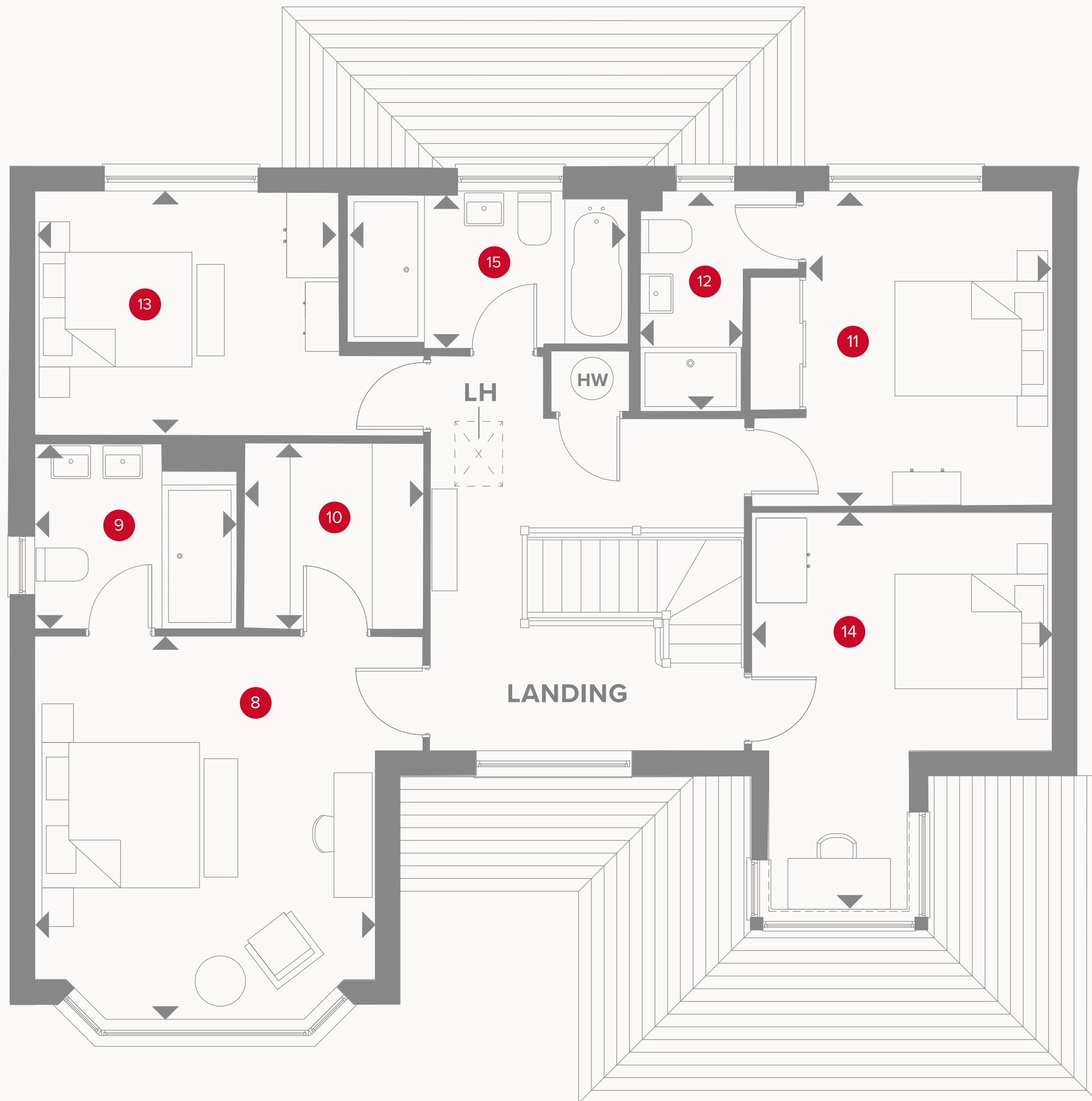
1	Kitchen	15'9" x 14'2"	4.76 x 4.27m
2	Lounge	16'3" x 13'2"	4.91 x 3.97m
3	Dining Room	11'5" x 11'1"	3.46 x 3.35m
4	Family Room	13'11" x 11'5"	4.20 x 3.46m
5	Utility	11'5" x 5'4"	3.46 x 1.62m
6	Cloaks	5'6" x 3'9"	1.67 x 1.12m
7	Garage	17'11" x 16'8"	5.41 x 5.04m



## KEY

-  Hob
- OV** Oven
- FF** Fridge/freezer
- TD** Tumble dryer space

-  Dimensions start
- ST** Storage cupboard
- WM** Washing machine space
- DW** Dish washer space



# THE RICHMOND FIRST FLOOR

8	Bedroom 1	13'4" x 13'2"	4.02 x 3.97m
9	En-suite 1	8'0" x 7'2"	2.43 x 2.17m
10	Wardrobe	7'2" x 6'9"	2.17 x 2.05m
11	Bedroom 2	12'3" x 11'8"	3.70 x 3.52m
12	En-suite 2	8'6" x 4'3"	2.58 x 1.28m
13	Bedroom 3	11'8" x 9'5"	3.53 x 2.86m
14	Bedroom 4	11'8" x 9'2"	3.52 x 2.77m
15	Bathroom	11'0" x 5'11"	3.33 x 1.78m



**CONSUMER  
CODE FOR  
HOME BUILDERS**  
[www.consumercode.co.uk](http://www.consumercode.co.uk)

Customers should note this illustration is an example of the Richmond house type. All dimensions indicated are approximate and the furniture layout is for illustrative purposes only. Homes may be "handed" (mirror image) versions of the illustrations, and may be detached, semi-detached or terraced. Materials used may differ from plot to plot including render and roof tile colours. Detailed plans and specifications are available for inspection for each plot at our Sales Centre during working hours and customers must check their individual specifications prior to making a reservation. Computer generated images are for indicative purposes only.

## KEY

- ◀ Dimensions start
- HW** Hot water storage
- LH** Loft hatch