



THE  
JUNIPERS

# Lambourne

FIVE BEDROOM HOME

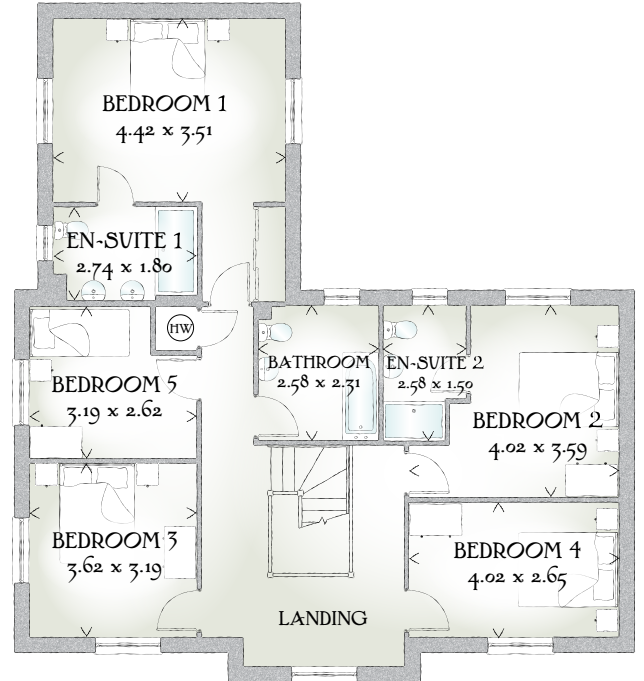
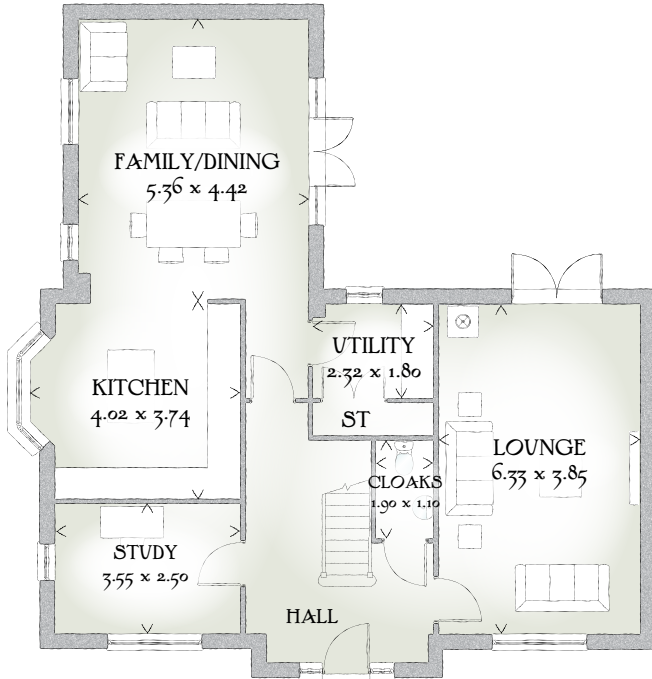


 REDROW



THE  
JUNIPERS

# Lambourne



FIVE BEDROOM HOME

\*Plots 231 is handed

A remarkable five bedroom home set in an attractive L-shape. This house has so much to recommend it, from its spacious dining/family room to its cosy home office and standalone lounge where you can come together and relax.

## GROUND FLOOR

Lounge	20'9" x 12'8"	6.33 x 3.85 m
Family/ Dining	17'7" x 14'6"	5.36 x 4.42 m
Kitchen	13'2" x 12'3"	4.02 x 3.74 m
Study	11'8" x 8'2"	3.55 x 2.50 m
Cloaks	6'3" x 3'7"	1.90 x 1.10 m
Utility	7'7" x 5'11"	2.32 x 1.80 m

## FIRST FLOOR

Bedroom 1	14'6" x 11'6"	4.42 x 3.51 m
En-suite 1	9'0" x 5'11"	2.74 x 1.80 m
Bedroom 2	13'2" x 11'9"	4.02 x 3.59 m
En-suite 2	8'6" x 5'3"	2.58 x 1.50 m
Bedroom 3	11'11" x 10'6"	3.62 x 3.19 m
Bedroom 4	13'2" x 8'8"	4.02 x 2.65 m
Bedroom 5	10'6" x 8'7"	3.19 x 2.62 m
Bathroom	8'6" x 7'7"	2.58 x 2.31 m

### CONSUMER CODE FOR HOME BUILDERS

[www.consumercode.co.uk](http://www.consumercode.co.uk)

Customers should note this illustration is an example of the Lambourne house type. All dimensions indicated are approximate and furniture layout is for illustrative purposes only. Homes may be 'handed' (mirror image) versions of the illustrations, and may be detached, semi-detached or terraced. Materials used may differ from plot to plot including render and roof tile colours. Detailed plans and specifications are available for inspection for each plot at our Sales Centre during working hours and customers must check their individual specifications prior to making a reservation.

KEY Hot water cylinder ST Cupboard

< Denotes where dimensions are taken from. All wardrobes are subject to site specification. Please see Sales Consultant for further details.

Traditional homes, built the way you remember

**REDROW**  
A BETTER WAY TO LIVE