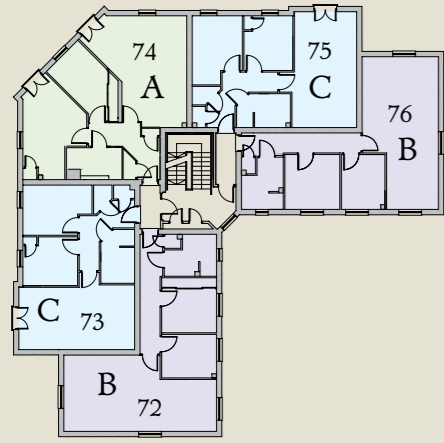
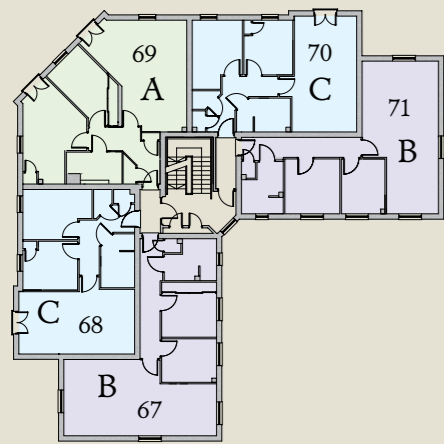
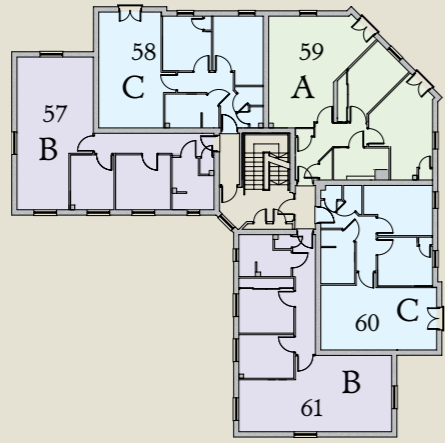


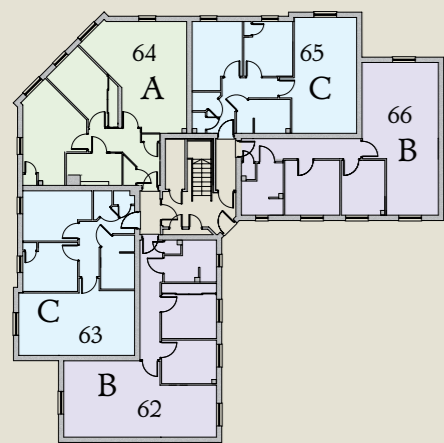
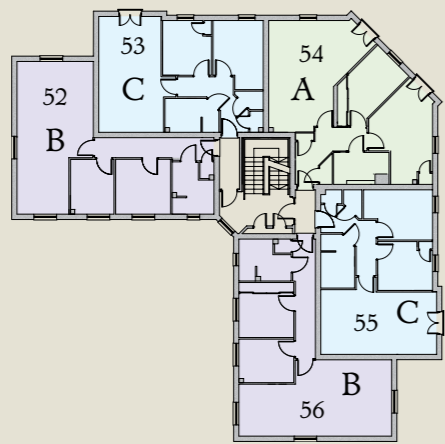
3 STOREY  
APARTMENT LOCATIONS



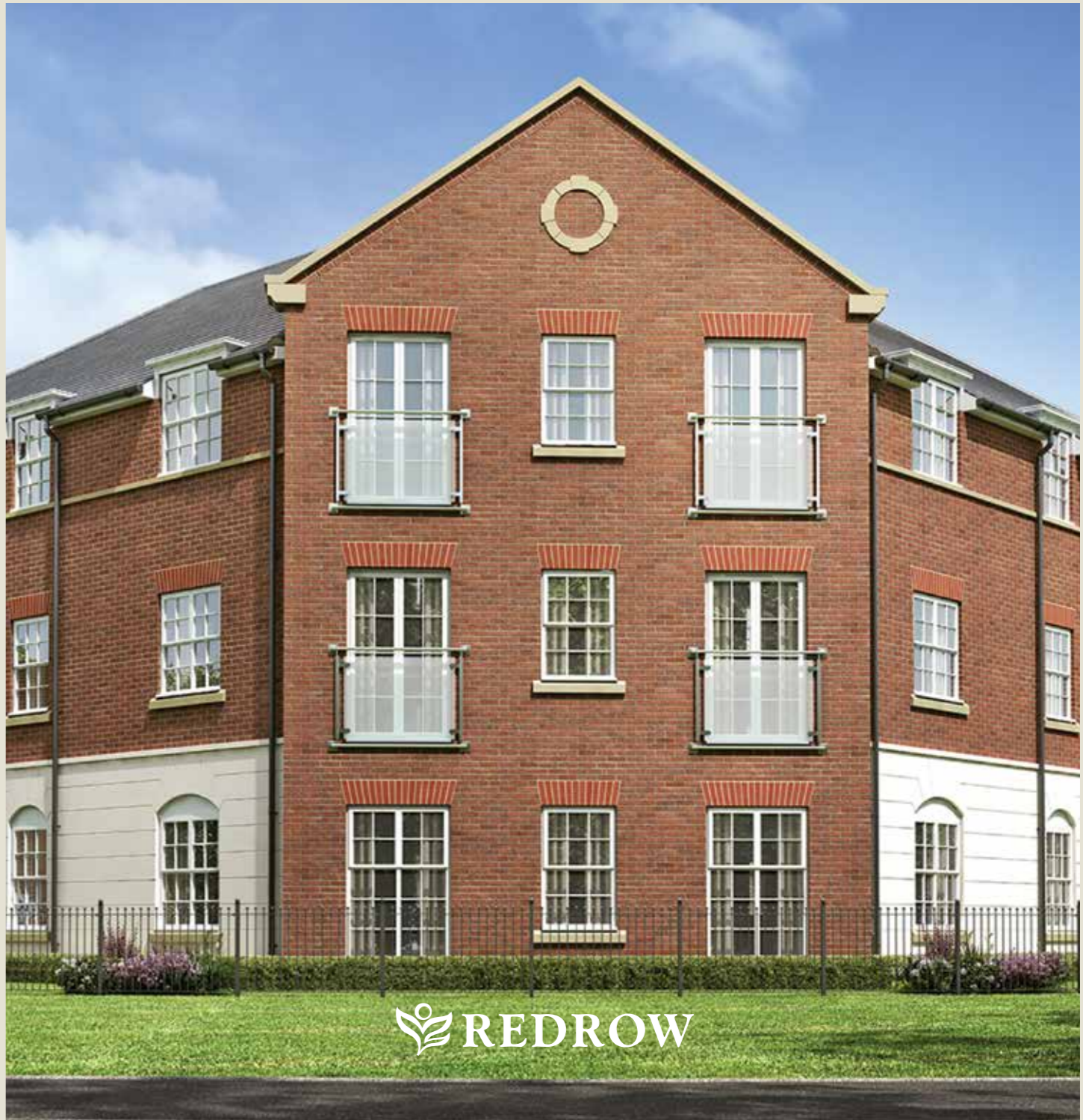
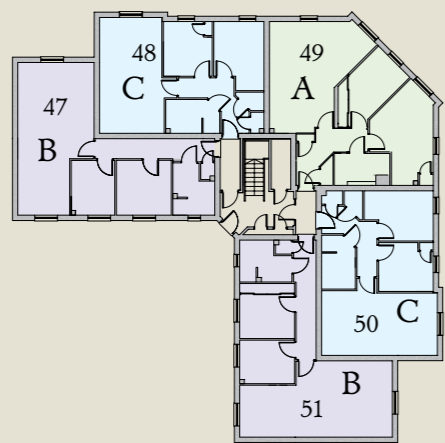
SECOND FLOOR



FIRST FLOOR



GROUND FLOOR

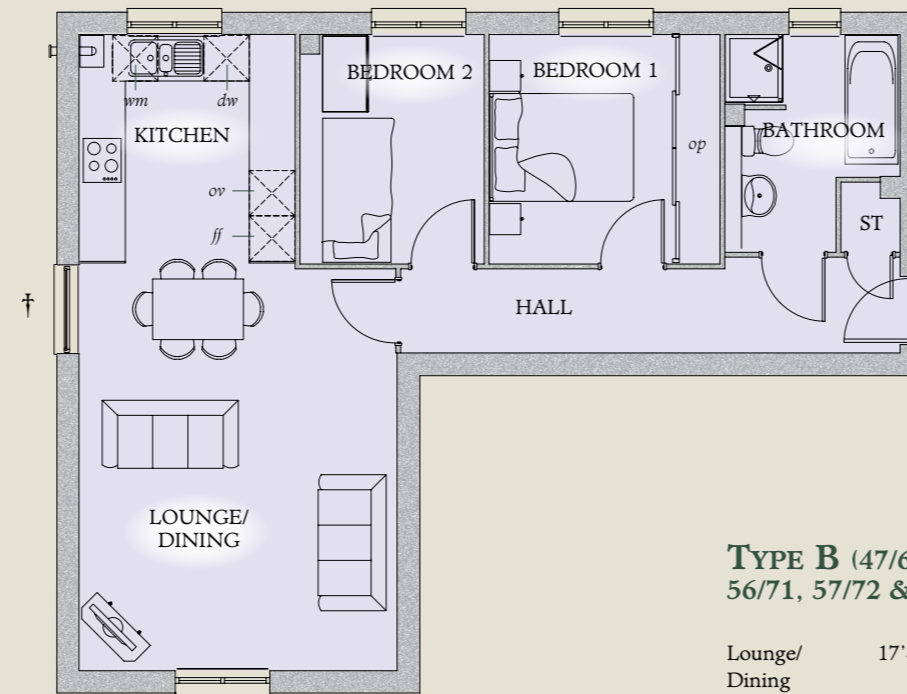


Traditional homes, built the way you remember



# Woodland View

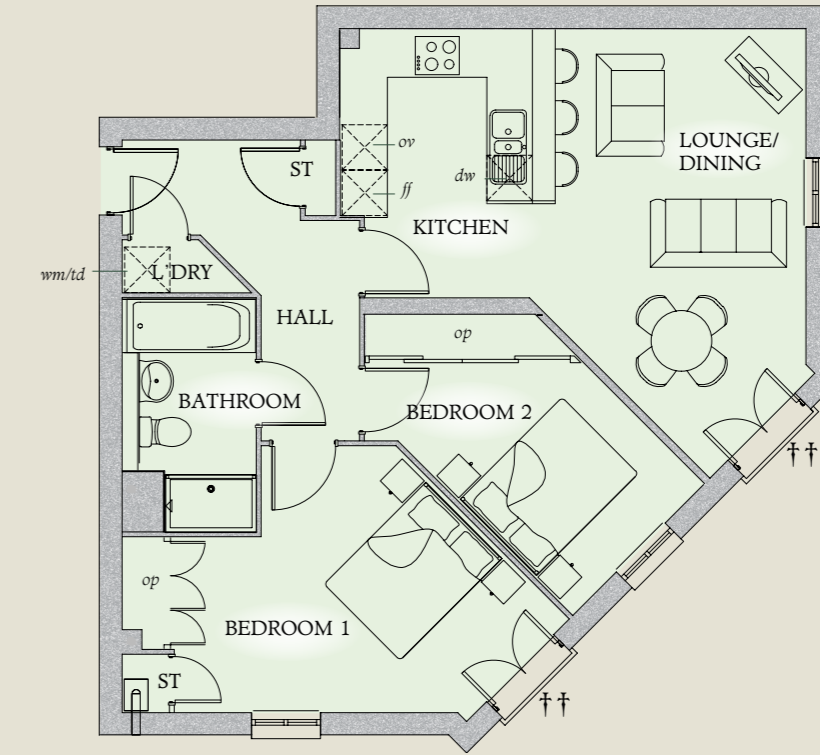
3 STOREY APARTMENTS



## TYPE B (47/62, 51/66 & 52/67, 56/71, 57/72 & 61/76)

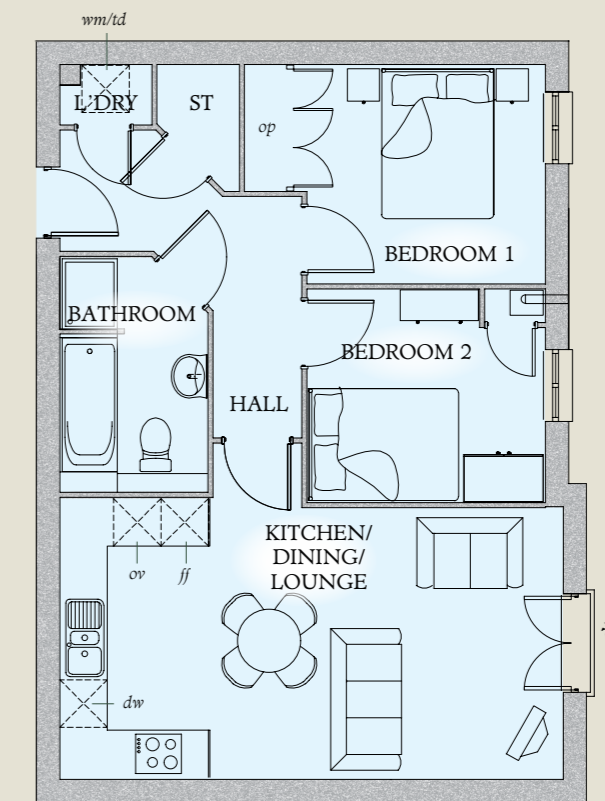
Lounge/ Dining	17'4" x 13'7"	5.28 x 4.15 m
Kitchen	10'1" x 9'3"	3.07 x 2.82 m
Bedroom 1	9'10" x 9'11"	3.02 x 2.99 m
Bedroom 2	9'10" x 7'11"	2.99 x 2.41 m
Bathroom	8'10" x 7'7"	2.68 x 2.30 m

Please note location of boiler on top floor differs.



## TYPE A (49/64, 54/69 & 59/74)

Lounge/ Dining	19'3" x 10'10"	5.86 x 3.30 m
Kitchen	11'6" x 9'3"	3.51 x 2.81 m
Bedroom 1	19'2" x 11'5"	5.84 x 3.48 m
Bedroom 2	15'5" x 8'0"	4.70 x 2.45 m
Bathroom	10'0" x 5'9"	3.06 x 1.75 m



## TYPE C (58, 60, 73 & 75)

*Advantage* (48, 50, 53, 55, 63, 65, 68 & 70)

Kitchen/ Dining/ Living	20'9" x 11'2"	6.32 x 3.40 m
Bedroom 1	12'4" x 9'0"	3.77 x 2.75 m
Bedroom 2	9'10" x 8'10"	3.00 x 2.68 m
Bathroom	9'10" x 6'1"	3.00 x 1.85 m

† Window to plots 52, 56, 57, 61, 67, 71, 72 & 76 only. †† French windows to plots 53, 54, 55, 58, 59, 60, 68, 69, 70, 73, 74 & 75 only.

### KEY

Electric hob Oven Fridge freezer Dishwasher Washing machine Tumble dryer Optional wardrobe available to purchase via MyRedrow  
\*Max dimensions Note: Bedroom dimensions taken into wardrobe recess

Customers should note this illustration is an example of the apartment type. Please refer to your Sales Consultant for details of any elevational differences. All dimensions indicated are approximate. The specifications will vary from site to site and plot to plot. Detailed plans and specifications are available for inspection for each plot at our Sales Centre during working hours and customers must check their individual specifications prior to making a reservation. Please note, steel frame apartment types will benefit from a slight increase to some room sizes. Boiler locations vary, please see Sales Consultant for details. Fitted wardrobes shown are a 'customer option'.

Traditional homes, built the way you remember

