



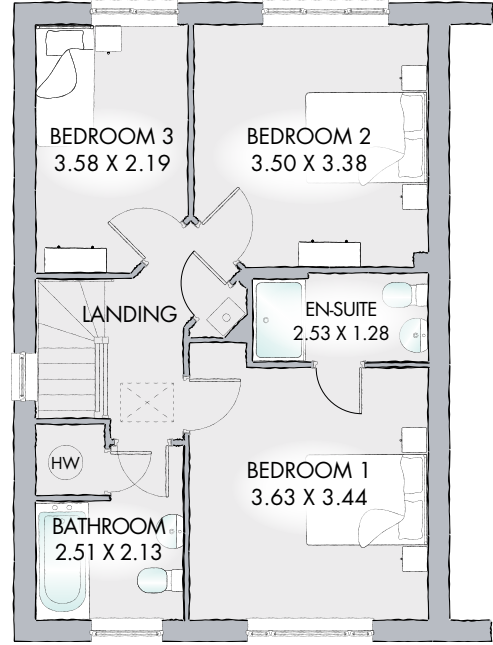
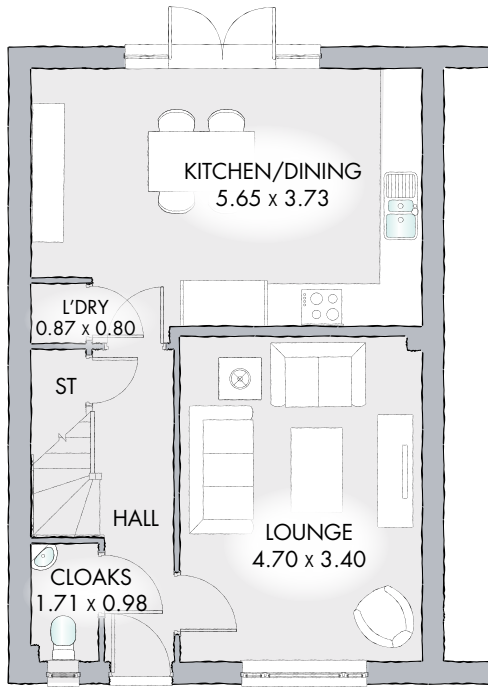
FINSBURY

THREE BEDROOM MID-TERRACE HOME



 **REDROW**

FINSBURY



THREE BEDROOM MID-TERRACE HOME

Perfect for a young family, the Finsbury suits a busy, modern lifestyle benefiting from an open plan kitchen/dining room and a separate lounge for relaxing and entertaining.

GROUND FLOOR

Kitchen/ Dining	18'7" x 12'3"	5.65 x 3.73 m
Lounge	15'5" x 11'2"	4.70 x 3.40 m
Laundry	2'10" x 2'7"	0.87 x 0.80 m
Cloaks	5'7" x 3'2"	1.71 x 0.98 m

FIRST FLOOR

Bedroom 1	11'11" x 11'3"	3.63 x 3.44 m
Bedroom 2	11'6" x 11'1"	3.50 x 3.38 m
Bedroom 3	11'9" x 7'2"	3.58 x 2.19 m
Bathroom	8'3" x 7'0"	2.51 x 2.13 m
En-suite	8'4" x 4'2"	2.53 x 1.28 m

CONSUMER CODE FOR HOME BUILDERS

www.consumercode.co.uk

Customers should note this illustration is an example of the Finsbury house type. All dimensions indicated are approximate and furniture layout is for illustrative purposes only. Homes may be 'handed' (mirror image) versions of the illustrations, and may be detached, semi-detached or terraced. Materials used may differ from plot to plot including render and roof tile colours. Detailed plans and specifications are available for inspection for each plot at our Sales Centre during working hours and customers must check their individual specifications prior to making a reservation.

KEY Hob Hot water cylinder ST Cupboard
*Max dimensions Note: Bedroom dimensions taken into wardrobe recess. All wardrobes are subject to site specification. Please see Sales Consultant for further details.

Traditional homes, built the way you remember

