



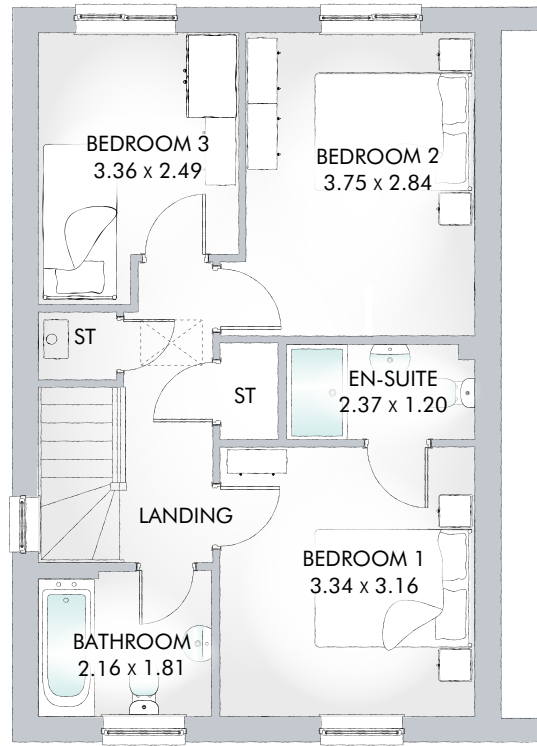
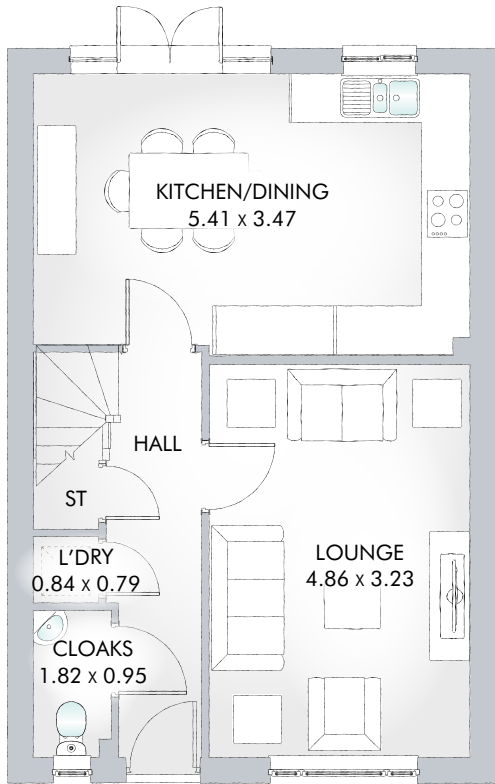
HANOVER

THREE BEDROOM SEMI-DETACHED HOME



 REDROW

HANOVER



THREE BEDROOM SEMI-DETACHED HOME

A semi-detached three bedroom home, the Hanover boasts a bright and open kitchen/dining area, ample storage space and the added benefit of an en-suite to the master bedroom.

GROUND FLOOR

Lounge	15'11" x 10'7"	4.86 x 3.23 m
Kitchen/ Dining	17'9" x 11'5"	5.41 x 3.47 m
Laundry	2'9" x 2'7"	0.84 x 0.79 m
Cloaks	6'0" x 3'1"	1.82 x 0.95 m

FIRST FLOOR

Bedroom 1	10'11" x 10'4"	3.34 x 3.16 m
En-suite	7'9" x 3'11"	2.37 x 1.20 m
Bedroom 2	12'4" x 9'4"	3.75 x 2.84 m
Bedroom 3	11'0" x 8'2"	3.36 x 2.49 m
Bathroom	7'1" x 5'11"	2.16 x 1.81 m

CONSUMER CODE FOR HOME BUILDERS

www.consumercode.co.uk

Customers should note this illustration is an example of the Hanover house type. All dimensions indicated are approximate and furniture layout is for illustrative purposes only. Homes may be 'handed' (mirror image) versions of the illustrations, and may be detached, semi-detached or terraced. Materials used may differ from plot to plot including render and roof tile colours. Detailed plans and specifications are available for inspection for each plot at our Sales Centre during working hours and customers must check their individual specifications prior to making a reservation.

KEY Hob Hot water cylinder ST Cupboard
 *Max dimensions Note: Bedroom dimensions taken into wardrobe recess. All wardrobes are subject to site specification. Please see Sales Consultant for further details.

Traditional homes, built the way you remember

