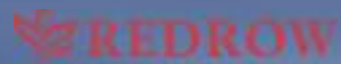


WATERSIDE REACH
TONBRIDGE

INDIGO

LUXURY 1, 2 & 3 BEDROOM APARTMENTS

Stylish Riverside Living





Computer generated image.

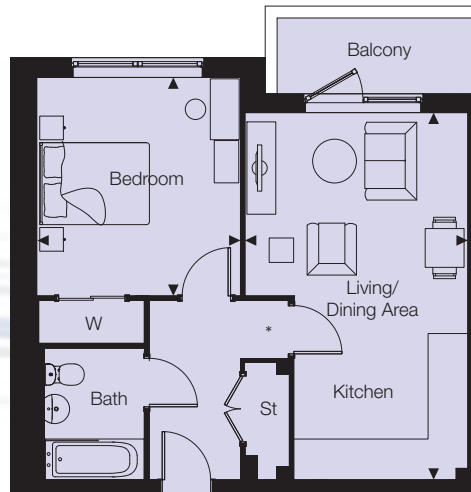
STYLISH APARTMENT LIVING IN A WATERSIDE SETTING



INDIGO

We strive to create environments which meet the demands of modern lifestyles, making our range of contemporary 1, 2 & 3 bedroom apartments ideally suited for young professionals, first time buyers and just about anyone looking for stylish, waterside living.

Development layout is indicative only and subject to change.



*Living room door in different position for plot 115h.

TYPE 10 APARTMENTS

Plots 99, 121 & 165

Kitchen/Living/ Dining Area	6.23m x 3.79m	20'5" x 12'5"
Bedroom	3.71m x 3.53m	12'2" x 11'6"

Plots 101h, 123h, 145h & 167h

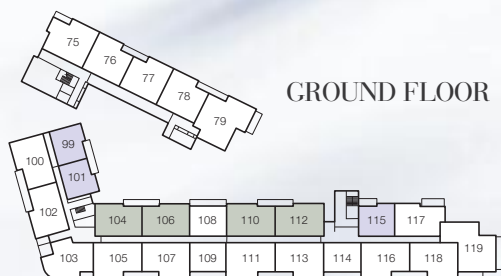
Kitchen/Living/ Dining Area	6.23m x 3.79m	20'5" x 12'5"
Bedroom	3.71m x 3.42m	12'2" x 11'2"

Plot 143

Kitchen/Living/ Dining Area	6.22m x 3.79m	20'4" x 12'5"
Bedroom	3.72m x 3.53m	12'2" x 11'6"

Plot 115h

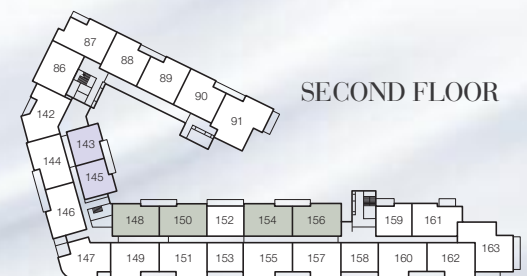
Kitchen/Living/ Dining Area	6.29m x 3.99m	20'7" x 13'1"
Bedroom	3.68m x 3.51m	12'1" x 11'6"



GROUND FLOOR

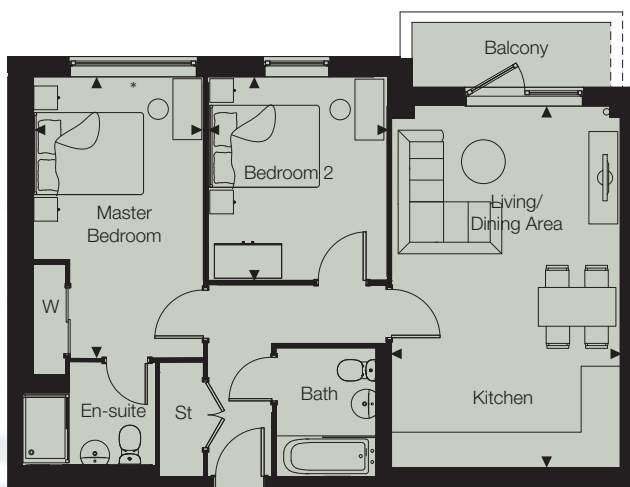


FIRST FLOOR



SECOND FLOOR

◀ Denotes point from which dimensions are measured. These dimensions are intended for guidance only and may vary by 7.6cm/3". Customers should note these illustrations are an example of the apartment type, please refer to your Sales Consultant for details of any elevational differences.



*Window variation to master bedroom
for plots 104, 126 & 148.

TYPE 13 APARTMENTS

Plot 104

Kitchen/Living/ Dining Area	6.27m x 3.90m	20'6" x 12'9"
Master Bedroom	4.66m x 2.85m	15'3" x 9'4"
Bedroom 2	3.47m x 3.09m	11'4" x 10'1"

Plots 126 & 148

Kitchen/Living/ Dining Area	6.29m x 3.90m	20'7" x 12'9"
Master Bedroom	4.66m x 2.85m	15'3" x 9'4"
Bedroom 2	3.48m x 3.09m	11'5" x 10'1"

Plots 106h, 128h & 150h

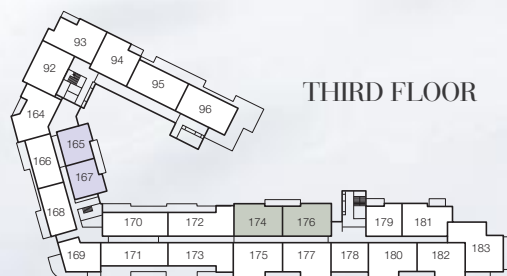
Kitchen/Living/ Dining Area	6.29m x 3.90m	20'7" x 12'9"
Master Bedroom	4.66m x 3.17m	15'3" x 10'4"
Bedroom 2	3.47m x 3.09m	11'4" x 10'1"

Plots 110, 132, 154 & 174

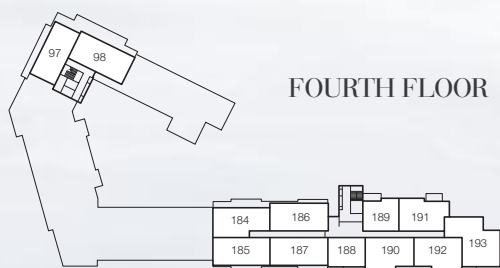
Kitchen/Living/ Dining Area	6.29m x 3.90m	20'7" x 12'9"
Master Bedroom	4.66m x 3.19m	15'3" x 10'5"
Bedroom 2	3.47m x 3.09m	11'4" x 10'1"

Plots 112h, 134h, 156h & 176h

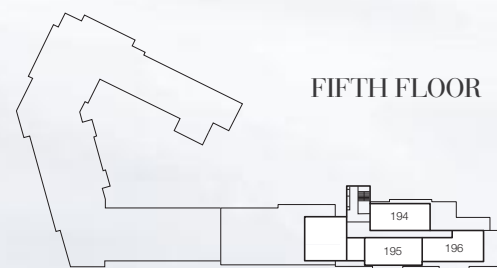
Kitchen/Living/ Dining Area	6.29m x 3.90m	20'7" x 12'9"
Master Bedroom	4.66m x 3.20m	15'3" x 10'5"
Bedroom 2	3.47m x 3.09m	11'4" x 10'1"



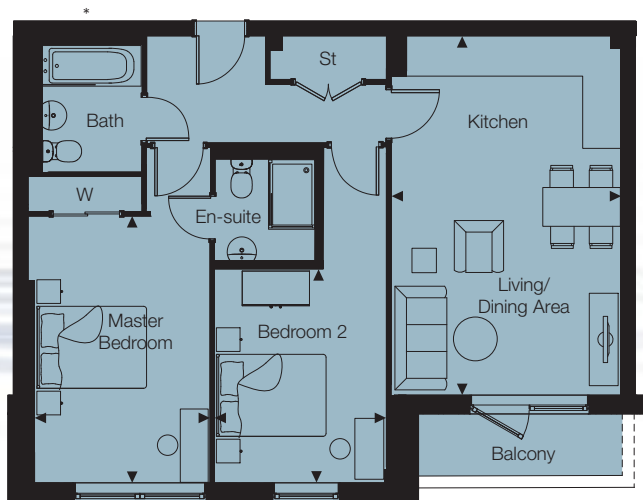
THIRD FLOOR



FOURTH FLOOR



FIFTH FLOOR



*Boxing variations across plots.
Please speak to Sales Consultant.

TYPE 14 APARTMENTS

Plots 105, 127

Kitchen/Living/ Dining Area	6.10m x 3.94m	20'0" x 12'11"
Master Bedroom	4.67m x 3.15m	15'3" x 10'4"
Bedroom 2	3.65m x 2.94m	11'11" x 9'7"

Plots 107h, 111, 113h, 116, 129h, 133, 135h, 138, 151h, 155, 157h, 160, 175, 177h, 180h & 190

Kitchen/Living/ Dining Area	6.10m x 3.95m	20'0" x 12'11"
Master Bedroom	4.67m x 3.05m	15'3" x 10'0"
Bedroom 2	3.65m x 3.07m	11'11" x 10'0"

Plots 118h, 140h, 192h

Kitchen/Living/ Dining Area	6.10m x 3.94m	20'0" x 12'11"
Master Bedroom	4.48m x 2.99m	14'8" x 9'9"
Bedroom 2	3.65m x 3.13m	11'11" x 10'3"

Plot 149

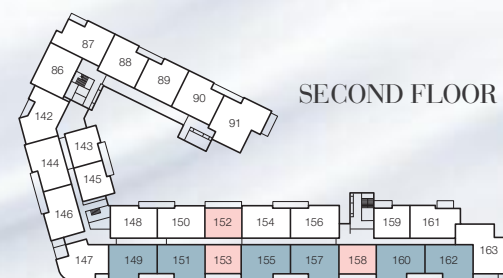
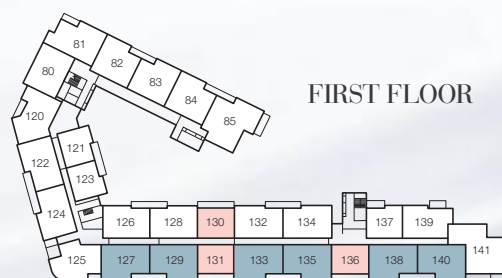
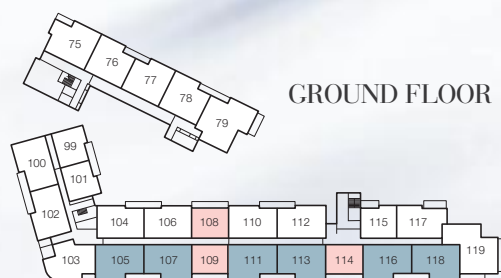
Kitchen/Living/ Dining Area	6.09m x 3.94m	19'11" x 12'11"
Master Bedroom	4.68m x 3.19m	15'4" x 10'5"
Bedroom 2	3.65m x 2.94m	11'11" x 9'7"

Plot 162h

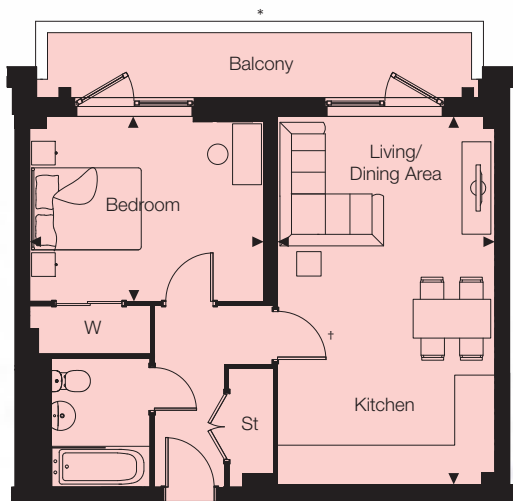
Kitchen/Living/ Dining Area	6.10m x 3.94m	20'0" x 12'11"
Master Bedroom	4.42m x 2.99m	14'6" x 9'9"
Bedroom 2	3.65m x 3.13m	11'11" x 10'3"

Plot 182h

Kitchen/Living/ Dining Area	6.10m x 3.94m	20'0" x 12'11"
Master Bedroom	4.48m x 2.99m	14'8" x 9'9"
Bedroom 2	3.61m x 3.13m	11'10" x 10'3"



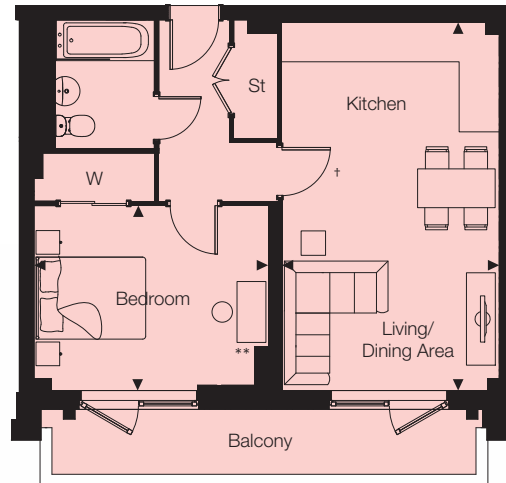
◀ Denotes point from which dimensions are measured. These dimensions are intended for guidance only and may vary by 7.6cm/3".
Customers should note these illustrations are an example of the apartment type, please refer to your Sales Consultant for details of any elevational differences.



TYPE 15A APARTMENTS

Plots 108, 130 & 152

Kitchen/Living/ Dining Area	6.29m x 3.66m	20'7" x 12'0"
Bedroom	3.92m x 3.17m	12'10" x 10'4"



†Door handed to plots 114, 136 & 158.
*Balcony varies slightly on plot 188.
**Boxing to plots 109, 131 & 153 only.

TYPE 15B APARTMENTS

Plots 109 & 153

Kitchen/Living/ Dining Area	5.92m x 3.80m	19'5" x 12'5"
Bedroom	4.18m x 2.98m	13'8" x 9'9"

Plot 131

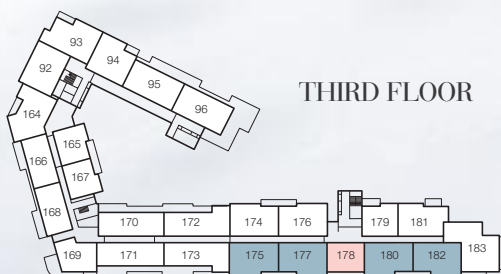
Kitchen/Living/ Dining Area	5.90m x 3.84m	19'4" x 12'7"
Bedroom	4.18m x 2.97m	13'8" x 9'9"

Plot 114

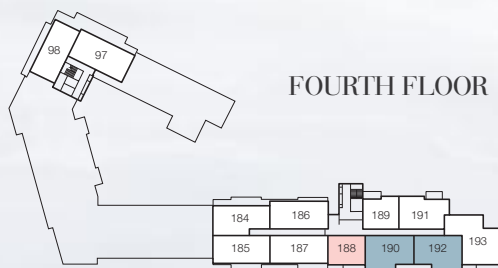
Kitchen/Living/ Dining Area	6.10m x 4.00m	20'0" x 13'1"
Bedroom	3.97m x 2.98m	13'0" x 9'9"

Plots 158, 178 & 188

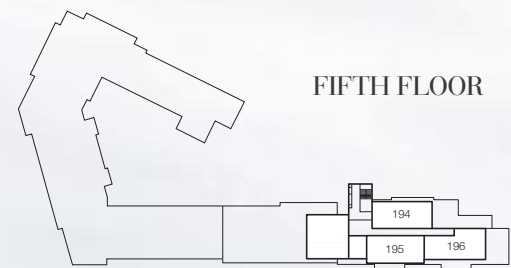
Kitchen/Living/ Dining Area	6.09m x 4.00m	19'11" x 13'1"
Bedroom	3.98m x 2.99m	13'0" x 9'9"



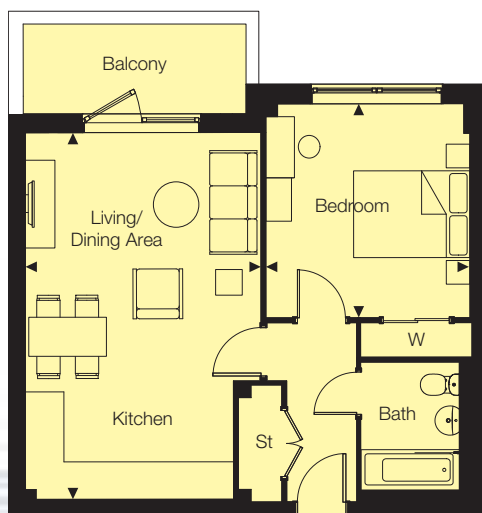
THIRD FLOOR



FOURTH FLOOR



FIFTH FLOOR



TYPE 16 APARTMENTS

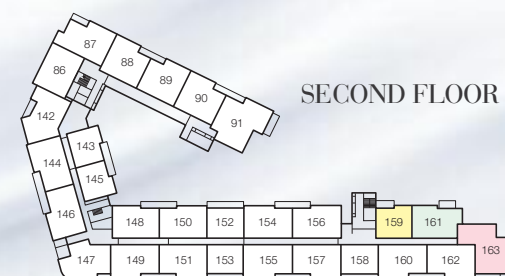
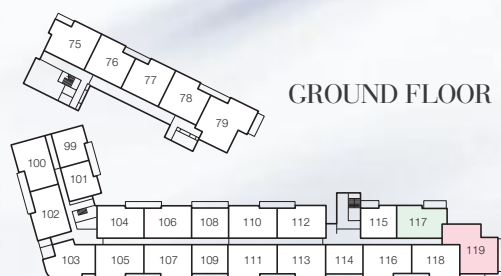
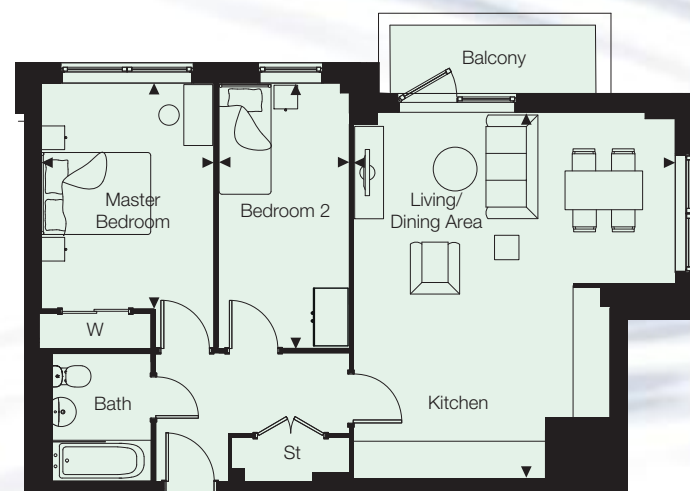
Plots 137, 159, 179 & 189

Kitchen/Living/ Dining Area	6.29m x 3.99m	20'8" x 13'1"
Bedroom	3.67m x 3.51m	12'1" x 11'6"

TYPE 17 APARTMENTS

Plots 117, 139, 161, 181 & 191

Kitchen/Living/ Dining Area	6.29m x 5.46m	20'8" x 17'10"
Master Bedroom	3.87m x 2.95m	12'8" x 9'8"
Bedroom 2	4.55m x 2.23m	14'11" x 7'3"



◀ Denotes point from which dimensions are measured. These dimensions are intended for guidance only and may vary by 7.6cm/3". Customers should note these illustrations are an example of the apartment type, please refer to your Sales Consultant for details of any elevational differences.

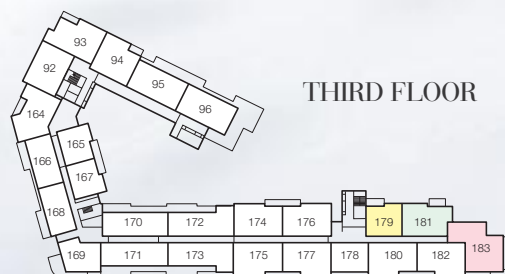


*Door handed to plots 119.

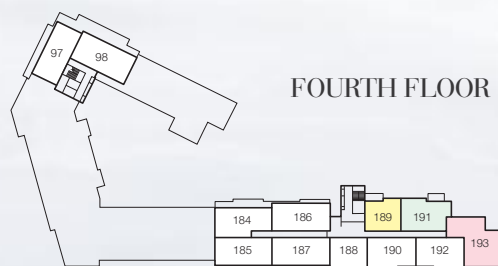
TYPE 18 APARTMENTS

Plots 119, 141, 163, 183 & 193

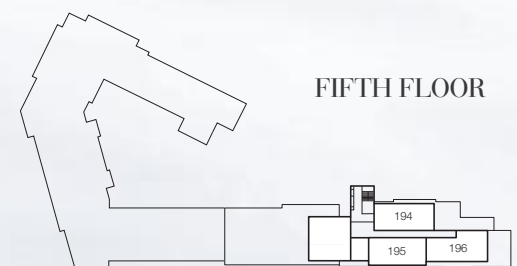
Kitchen/Living/ Dining Area	7.69m x 4.81m	25'2" x 15'9"
Master Bedroom	3.55m x 3.01m	11'7" x 9'10"
Bedroom 2	3.59m x 3.14m	11'9" x 10'3"
Bedroom 3	3.14m x 2.52m	10'3" x 8'3"



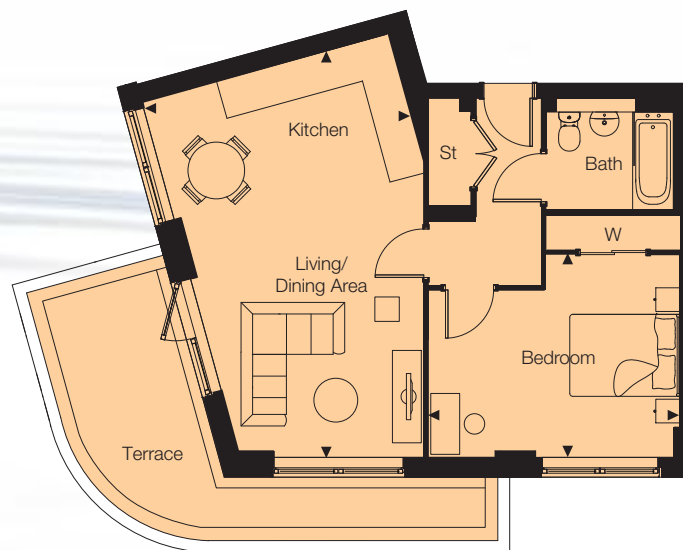
THIRD FLOOR



FOURTH FLOOR



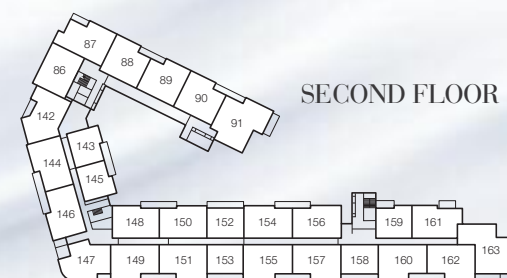
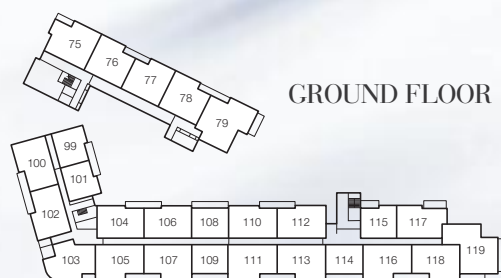
FIFTH FLOOR



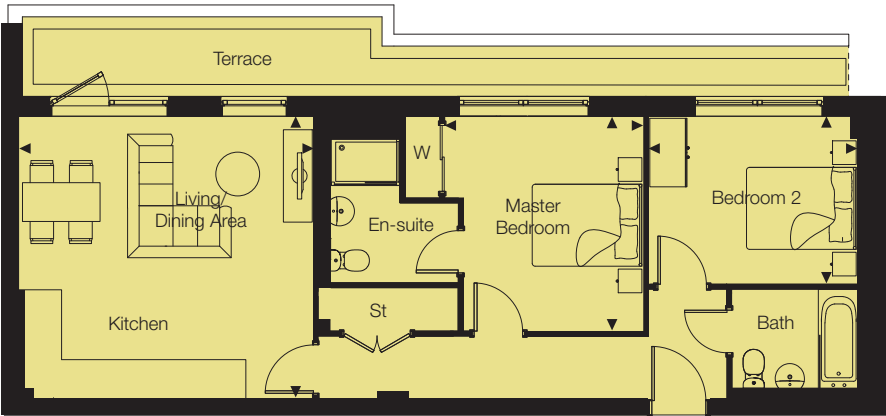
TYPE 21 APARTMENT

Plot 169

Kitchen/Living/ Dining Area	6.96m x 4.54m	22'10" x 14'10"
Bedroom	4.29m x 3.47m	14'1" x 11'5"



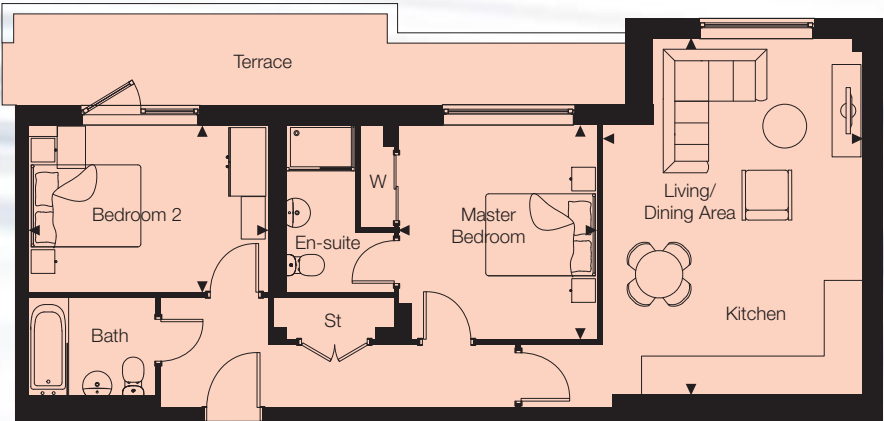
◀ Denotes point from which dimensions are measured. These dimensions are intended for guidance only and may vary by 7.6cm/3". Customers should note these illustrations are an example of the apartment type, please refer to your Sales Consultant for details of any elevational differences.



TYPE 22 APARTMENTS

Plots 170 & 171h

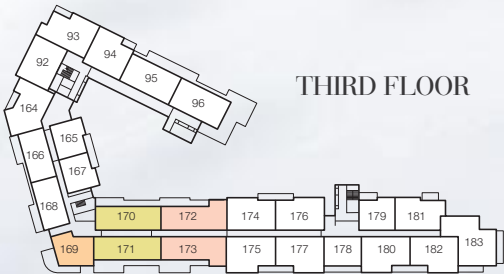
Kitchen/Living/ Dining Area	4.88m x 4.82m	16'0" x 15'10"
Master Bedroom	3.68m x 3.40m	12'0" x 11'1"
Bedroom 2	3.60m x 2.86m	11'9" x 9'4"



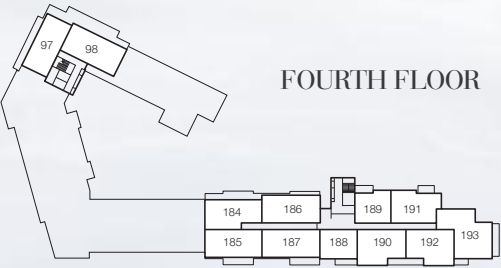
TYPE 23 APARTMENTS

Plots 172 & 173h

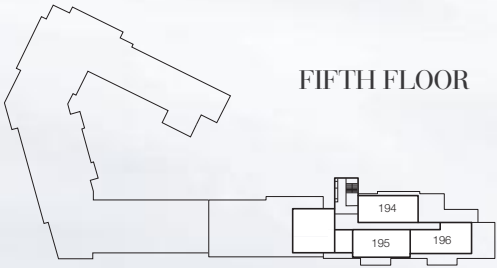
Kitchen/Living/ Dining Area	6.09m x 4.47m	19'11" x 14'7"
Master Bedroom	3.66m x 3.40m	12'0" x 11'1"
Bedroom 2	4.10m x 2.86m	13'5" x 9'4"



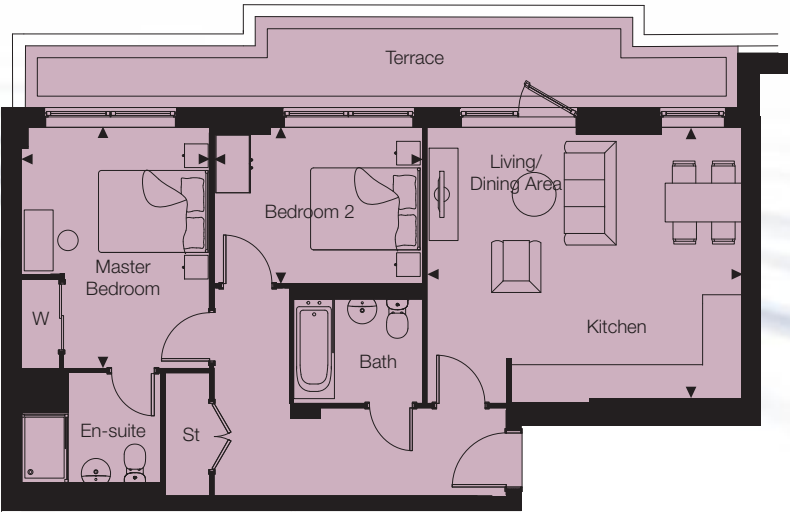
THIRD FLOOR



FOURTH FLOOR



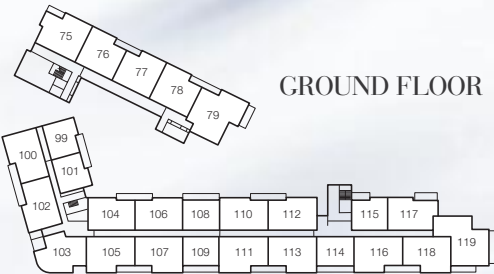
FIFTH FLOOR



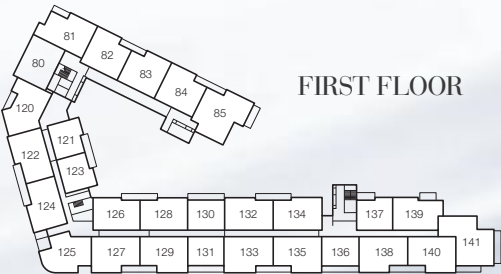
TYPE 24 APARTMENT

Plot 184

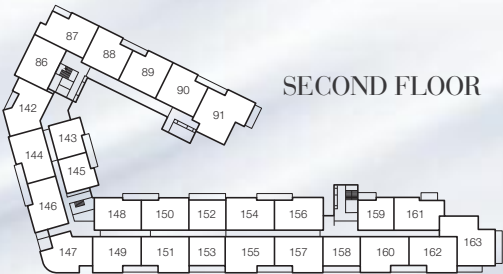
Kitchen/Living/ Dining Area	5.39m x 4.70m	17'8" x 15'5"
Master Bedroom	4.13m x 3.19m	13'6" x 10'5"
Bedroom 2	3.57m x 2.65m	11'8" x 8'8"



GROUND FLOOR

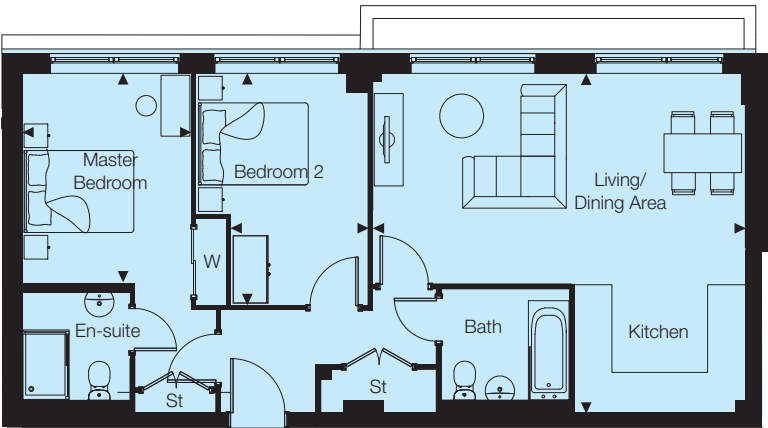


FIRST FLOOR



SECOND FLOOR

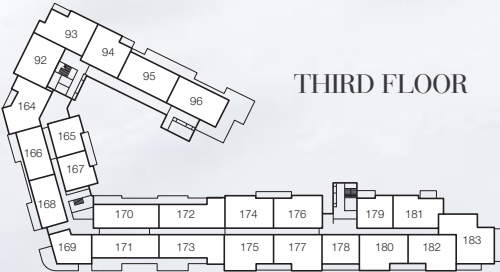
◀ Denotes point from which dimensions are measured. These dimensions are intended for guidance only and may vary by 7.6cm/3". Customers should note these illustrations are an example of the apartment type, please refer to your Sales Consultant for details of any elevational differences.



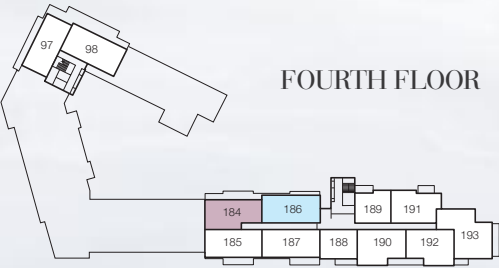
TYPE 26 APARTMENT

Plot 186

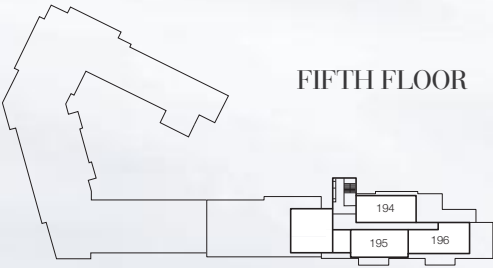
Kitchen/Living/ Dining Area	6.40m x 5.76m	21'0" x 18'10"
Master Bedroom	3.59m x 2.91m	11'9" x 9'6"
Bedroom 2	3.98m x 2.29m	13'0" x 7'6"



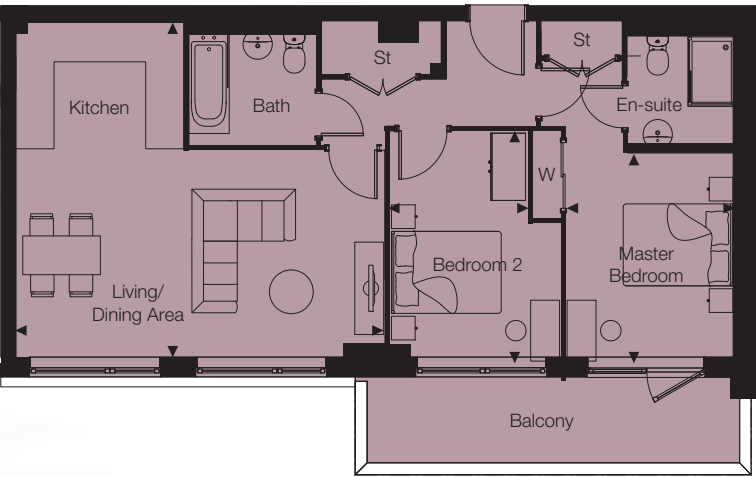
THIRD FLOOR



FOURTH FLOOR



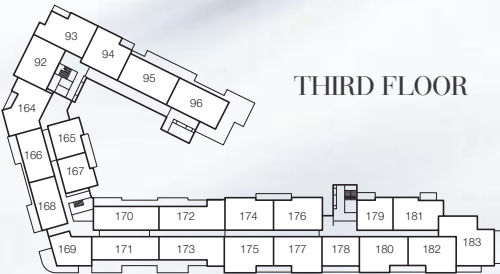
FIFTH FLOOR



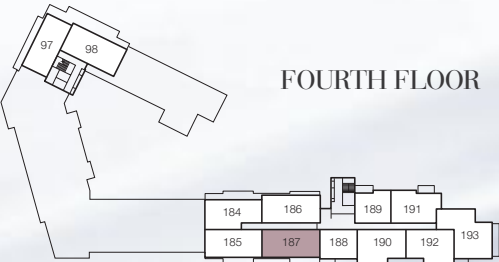
TYPE 27 APARTMENT

Plot 187

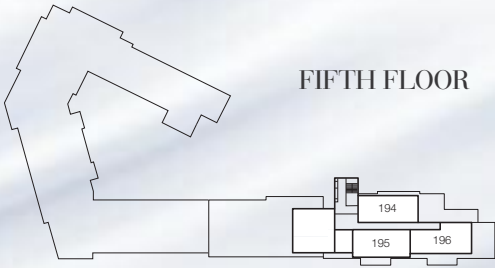
Kitchen/Living/ Dining Area	6.32m x 5.71m	20'9" x 18'8"
Master Bedroom	3.54m x 2.83m	11'7" x 9'5"
Bedroom 2	3.54m x 2.32m	11'7" x 7'7"



THIRD FLOOR



FOURTH FLOOR



FIFTH FLOOR

◀ Denotes point from which dimensions are measured. These dimensions are intended for guidance only and may vary by 7.6cm/3". Customers should note these illustrations are an example of the apartment type, please refer to your Sales Consultant for details of any elevational differences.

Convenient & spacious



PARKING AT INDIGO

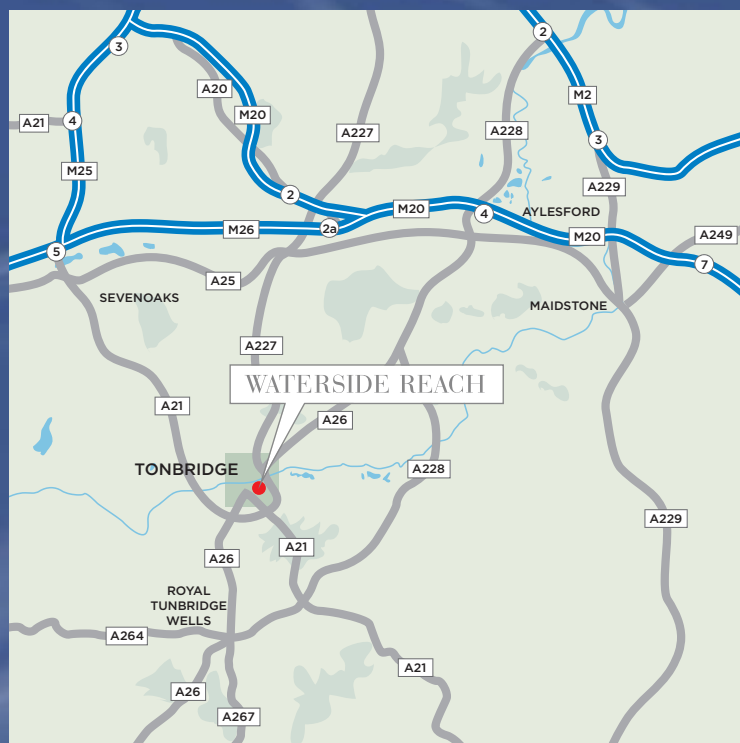
A selected number of these contemporary apartments come with a convenient allocated parking space. Plus all apartments feature extra storage and communal bicycle storage.



Car parking plan indicative only, please speak to Sales Consultant for more details.

WATERSIDE REACH

TONBRIDGE



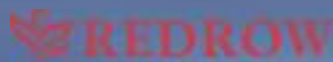
Area map



Local map

Waterside Reach | Sovereign Way | Tonbridge | TN9 1SA

01732 668 039 | www.redrow.co.uk



It is not possible in a brochure of this nature to do more than give a general impression of the range, quality and variety of the homes we have on offer. The computer-generated imagery, location and lifestyle photography are included for guidance and indicative purposes only. The Properties may vary in terms of elevational design details, position/size of garage and materials used. Maps not to scale. All internal and external photography of properties depicts previous Redrow homes.

01/16 159224 Designed and produced by thinkBDW 01206 546965.