



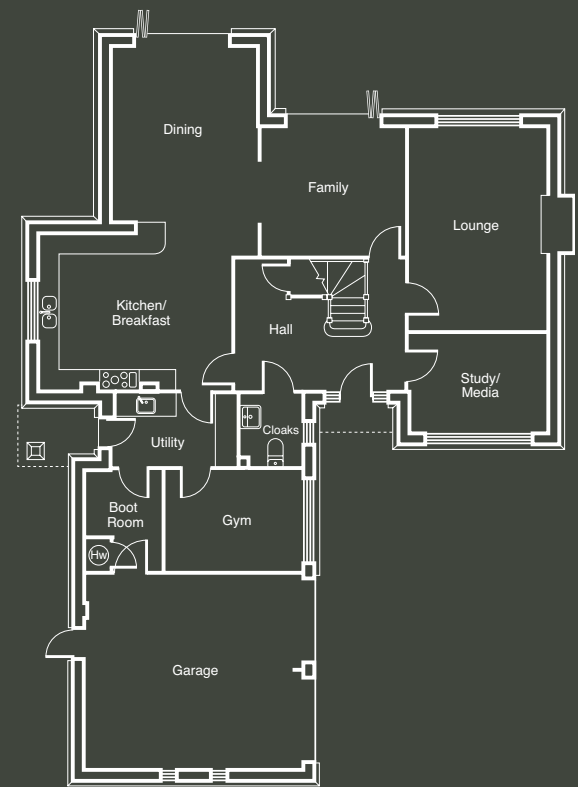
OAK VIEW
BURCOTE PARK, WOOD BURCOTE

Oak

FIVE BEDROOM HOME | 3384 SQ FT

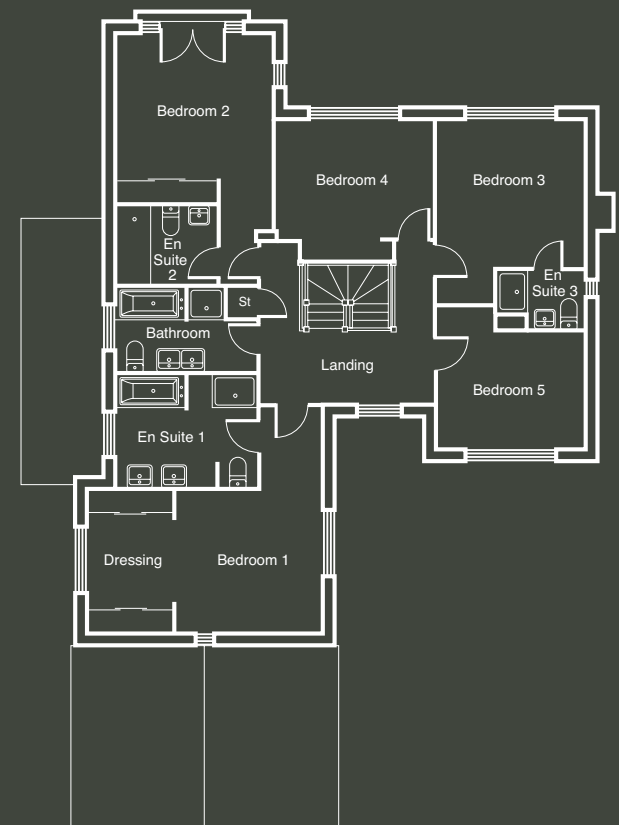
Plot No. 90, 92, 99, 102, 120

The Oak is every inch the country manor, from the decorative graduated chimney, to the stone cills surrounding the windows. A substantial home which is the epitome of modern executive living at its best.



GROUND FLOOR

LOUNGE	19'7" X 13'5"*	5.97 X 4.08M*
KITCHEN/BREAKFAST	18'7" X 15'3"*	5.67 X 4.64M*
FAMILY	13'8" X 12'6"	4.17 X 3.81M
DINING	18'1" X 14'1"*	5.51 X 4.30M*
STUDY/MEDIA	13'5" X 9'7"	4.08 X 2.91M
CLOAKS	6'11" X 5'11"	2.10 X 1.81M
GYM	13'9" X 9'7"	4.18 X 2.93M
BOOT ROOM	9'7" X 7'6"*	2.93 X 2.29M*
UTILITY	12'59" X 6'11"*	3.84 X 2.10M*
GARAGE	22'1" X 18'10"*	6.74 X 5.74M*



FIRST FLOOR

BEDROOM 1	13'6" X 13'0"*	4.08 X 3.97M*
EN SUITE 1	12'8" X 10'0"*	3.85 X 3.04M*
DRESSING	13'0" X 7'9"	3.97 X 2.36M
BEDROOM 2	17'9" X 14'1"*	5.42 X 4.30M*
EN SUITE 2	9'1" X 7'0"	2.77 X 2.12M
BEDROOM 3	16'6" X 13'3"*	5.04 X 4.04M*
EN SUITE 3	7'11" X 5'1"*	2.41 X 1.54M*
BEDROOM 4	14'1" X 12'8"*	4.29 X 3.85M*
BEDROOM 5	13'45" X 12'10"*	4.10 X 3.90M*
BATHROOM	12'8" X 7'7"*	3.85 X 2.30M*

NOTE: Sloping soffits to first floor. All wardrobes are optional and positions shown are for information only. *Maximum dimension.

Customers should note this illustration is an example of the OAK housetype. All dimensions indicated are approximate and for illustrative purposes only. All wardrobes are subject to site specification, please see sales consultant for further details. Homes may be a 'handed' (mirror image) versions of the illustrations, and may be detached, semi-detached or terraced. Materials used may differ from plot to plot including render and roof tile colours. Detailed plans and specifications are available for inspection for each plot at our Marketing Suite during working hours and customers must check their individual specifications prior to making reservation.