



Sunningdale

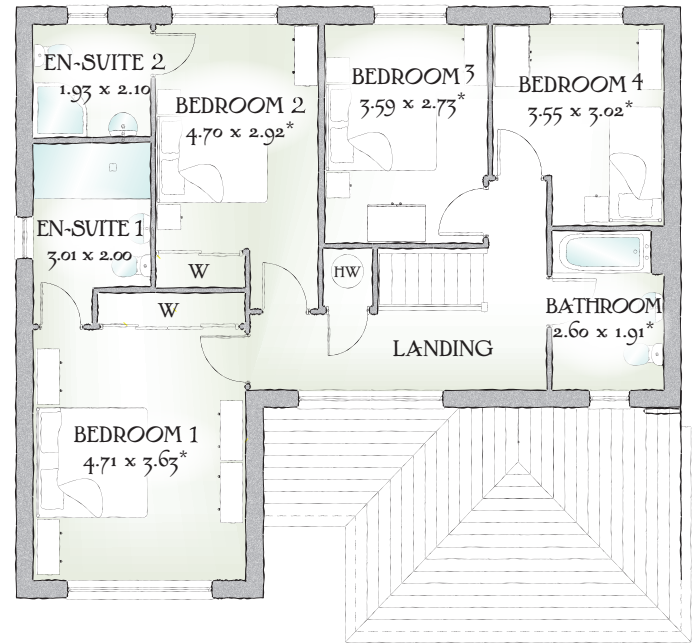
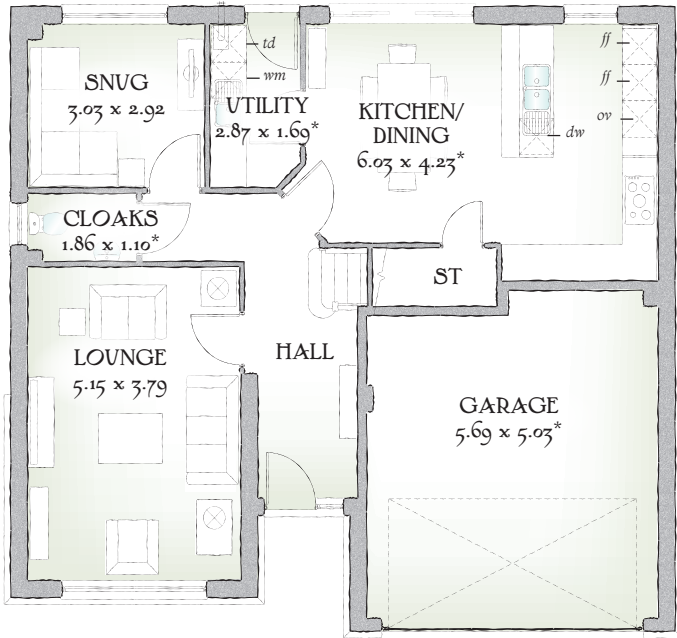
FOUR BEDROOM HOME



 REDROW



Sunningdale



1677 SQ FT | FOUR BEDROOM HOME

Generously proportioned and superbly designed, the Sunningdale has the perfect balance of shared rooms and personal space that is essential as your family gets older and more independent.

GROUND FLOOR

Lounge	16'11" x 12'5"	5.15 x 3.79 m
Kitchen/ Dining	19'9" x 13'11"	6.03 x 4.23 m*
Utility	9'5" x 5'7"	2.87 x 1.69 m*
Snug	9'11" x 8'8"	3.03 x 2.92 m
Cloaks	6'1" x 3'7"	1.86 x 1.10 m*
Garage	18'8" x 16'6"	5.69 x 5.03 m*

FIRST FLOOR

Bedroom 1	15'5" x 12'5"	4.71 x 3.79 m*
En-suite 1	9'11" x 6'7"	3.01 x 2.00 m
Bedroom 2	15'5" x 9'7"	4.70 x 2.92 m*
En-suite 2	6'4" x 6'11"	1.93 x 2.10 m
Bedroom 3	11'9" x 8'11"	3.59 x 2.73 m*
Bedroom 4	11'8" x 9'11"	3.56 x 3.02 m*
Bathroom	8'6" x 6'3"	2.60 x 1.91 m*

CONSUMER CODE FOR HOME BUILDERS

www.consumercode.co.uk

Customers should note this illustration is an example of the Sunningdale house type. All dimensions indicated are approximate and furniture layout is for illustrative purposes only. Homes may be 'handed' (mirror image) versions of the illustrations, and may be detached, semi-detached or terraced. Materials used may differ from plot to plot including render and roof tile colours. Detailed plans and specifications are available for inspection for each plot at our Sales Centre during working hours and customers must check their individual specifications prior to making a reservation.

KEY Hob Oven Fridge/freezer Washing machine space Dishwasher space Tumble dryer space Hot water cylinder ST Cupboard W Wardrobe

*Max dimensions Note: Bedroom dimensions taken into wardrobe recess. All wardrobes are subject to site specification. Please see Sales Consultant for further details.

Traditional homes, built the way you remember

