



Welwyn

FOUR BEDROOM HOME



 REDROW

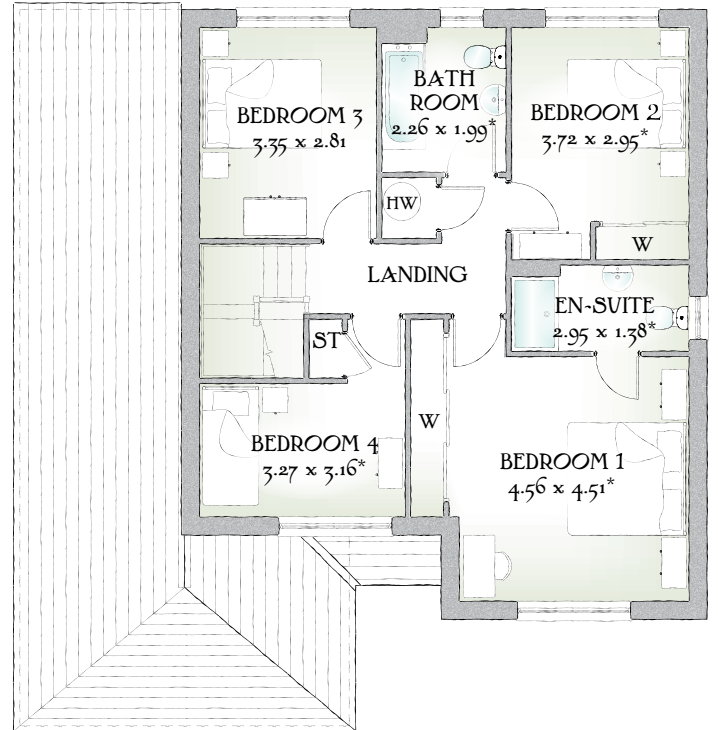
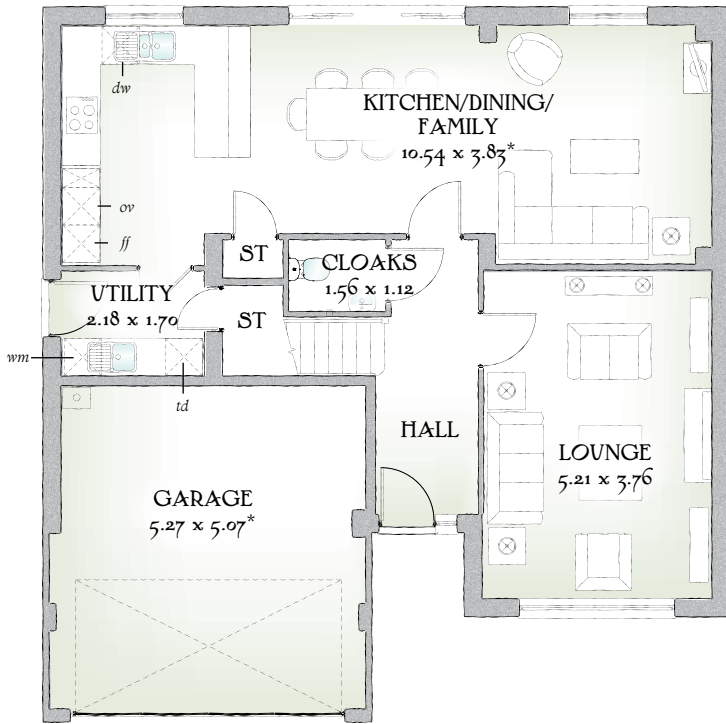


Welwyn

FOUR BEDROOM HOME



 REDROW



1557 SQ FT | FOUR BEDROOM HOME

With a generous family, dining and kitchen area that brings everyone together, plus a spacious, separate lounge when you want a little time to yourself, the Welwyn is designed to accommodate all the ebb and flow of family life.

GROUND FLOOR

Lounge	17'1" x 12'4"	5.21 x 3.76 m
Kitchen/ Dining/ Family	34'7" x 12'7"	10.54 x 3.83 m*
Utility	7'2" x 5'7"	2.18 x 1.70 m
Cloaks	5'1" x 3'8"	1.56 x 1.12 m
Garage	17'3" x 16'8"	5.27 x 5.07 m*

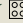
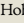
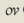
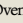
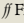
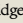
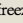
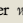
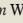
FIRST FLOOR

Bedroom 1	15'0" x 14'10"	4.56 x 4.51 m*
En-suite	9'8" x 4'6"	2.95 x 1.38 m*
Bedroom 2	12'2" x 9'8"	3.72 x 2.95 m*
Bedroom 3	11'0" x 9'3"	3.35 x 2.81 m
Bedroom 4	10'9" x 10'4"	3.27 x 3.16 m*
Bathroom	7'5" x 6'6"	2.26 x 1.99 m*

CONSUMER CODE FOR HOME BUILDERS

www.consumercode.co.uk

Customers should note this illustration is an example of the Welwyn house type. All dimensions indicated are approximate and furniture layout is for illustrative purposes only. Homes may be 'handed' (mirror image) versions of the illustrations, and may be detached, semi-detached or terraced. Materials used may differ from plot to plot including render and roof tile colours. Detailed plans and specifications are available for inspection for each plot at our Sales Centre during working hours and customers must check their individual specifications prior to making a reservation.

KEY  Hob  Oven  Fridge/freezer  Washing machine space  Dishwasher space  Tumble dryer space  Hot water cylinder  ST Cupboard  W Wardrobe

*Max dimensions Note: Bedroom dimensions taken into wardrobe recess. All wardrobes are subject to site specification. Please see Sales Consultant for further details.

Traditional homes, built the way you remember