

Lime

Three bedroom home



Where you
want to be



Harwood
Homes

Lime

Three bedroom home



Where you
want to be



Harwood
Homes

Lime

Three bedroom home

The Lime may look very traditional on the outside, but inside it's anything but, with a stunning specification that includes a magnificent master bedroom suite and two further double bedrooms each with their own en-suite bathroom.

Ground floor

Lounge	18'2" x 10'6"	5.54 x 3.20 m
Kitchen/ Dining	18'2" x 9'8"	5.54 x 2.95 m
Cloaks	6'2" x 3'10"	1.87 x 1.17 m

First floor

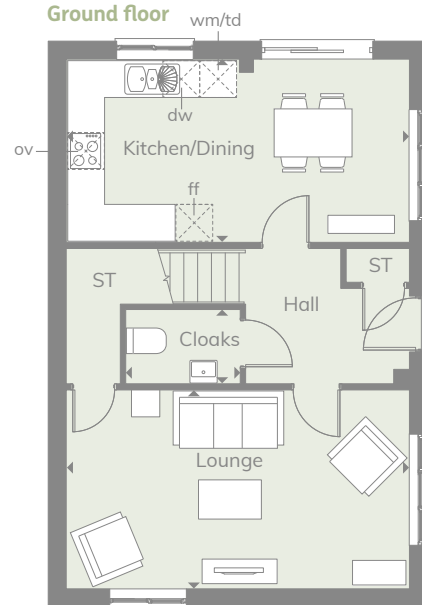
Bedroom 1	18'2" x 9'9"	5.54 x 2.98 m
En-suite	8'2" x 4'2"	2.49 x 1.27 m
Bedroom 2	10'10" x 8'11"	3.30 x 2.73 m
Bedroom 3	10'10" x 8'11"	3.30 x 2.73 m
Bathroom	7'3" x 5'7"	2.22 x 1.70 m

Customers should note this illustration is an example of the Lime house type. All dimensions indicated are approximate and the furniture layout is for illustrative purposes only. Homes may be 'handed' (mirror image) versions of the illustrations, and may be detached, semi-detached or terraced. Materials used may differ from plot to plot including render and roof tile colours. Detailed plans and specifications are available for inspection for each plot at our Sales Centre during working hours and customers must check their individual specifications prior to making a reservation.

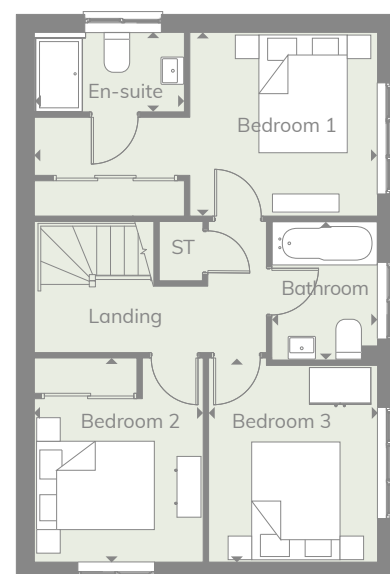
KEY

 Hob	td Tumble dryer space
ov Oven	ST Cupboard
ff Fridge/freezer	wm Washing machine space
dw Dishwasher	

Ground floor



First floor



**CONSUMER
CODE FOR
HOME BUILDERS**

www.consumercode.co.uk

† Denotes where dimensions are taken from. All wardrobes are subject to site specification. Please see Sales Consultant for further details.

THINK 207465_EF_LIME_DM.1 RV

Discover where you want to be and visit
harwoodhomes.co.uk


**Harwood
Homes**